

CUMBERLAND

Architectural Forms for Interior Function

Facade Multiple Height Meeting Tables



beautiful objects that work

Facade Tables

Designed by Travis Clifton

Travis Clifton's design was inspired by consideration of architectural exteriors, their flat expanses, and the light that penetrates through volumes of space. From there, the Facade design developed in two directions, one that plays with the patterning of light through perforation patterns and another that builds on the monolithic form, featuring the beauty of natural wood. Three heights and smart accessories equip the tables to serve in a variety of roles, from touch-down benching stations to bar-height cafe counters to shared workspace in libraries.

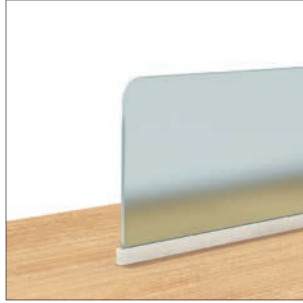
The two personas of the Facade Table collection: At left, the permeable precision-cut metal base cover allows light to pass through the base. At right, the simplicity of the form showcases the natural wood. In both cases, the tables are designed to align end to end without the fussy visual repetition of legs or bases, and to provide a clean backdrop for many seating styles.





Task or Ambient Lighting

Echoing the rectangle formed by the Facade base, an optional silver frame holds an LED light that can be rotated to shine directly on work or directed up to add ambient.



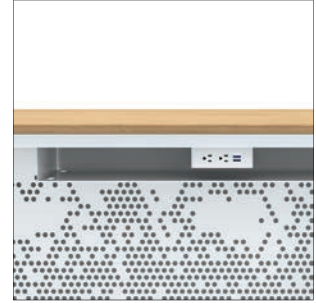
Privacy Screen

Preserving the visual simplicity of the Facade tables, an optional privacy screen provides just enough sense of personal space to make a table comfortable to share.



Table Base and Plinth

The base panels, of precision-cut patterned metal or wood, are removable for access to capacious wire management within.



Power and Storage

To tune a table to its function, optional power and storage trays can be added to any Facade table. Outlets are white or black; trays match the table paint color.



Facade tables were designed for range of personality. The base, which has a large capacity for cable management, sets the tone, starting with the decision between wood and perforated metal panels. Wood and painted metal options multiply the personalities, further expressed through wood, glass, stone, or solid-surface tops.

Facade Tables
Designed by Travis Clifton

The monolithic form of the Facade Table changes character with precision-cut patterned metal or wood base, furthered with a choice of top materials and finishes. Add power, lighting, storage trays, and privacy screen to suit the function to the need in any environment.

Specifications

Tables have a base covered with removable panels in precision-cut painted metal or wood.
Tops can be painted glass, wood, solid surface, or stone.

Base and Surface Options

- Metal:Painted metal is standard in Dark Bronze, White, Silver, or Black
- Wood:Maple is standard; Oak, Walnut, and Option A Exotic woods are also available.
- Finishes:Any standard MP finish on Maple, any premium WL finish on Walnut, any premium WO finish on Rift White Oak, or any Option A Exotic species/finish selection; custom finishes are also available.
- Top:.75"-thick wood top, .5"-thick tempered back-painted glass, three grades of .75"-thick stone, or .5"-thick solid surface.
- Glass:White Satin is standard; other painted glass colors are also available.
- Solid Surface:Glacier White is standard.

Additional Options

- Power:Each power unit has two AC outlets and dual 2.1 amp USB charging ports.
- Lighting:Optional LED task light is silver and requires a pre-drilled top surface for on-site installation.
The dimmable light rotates to position for task lighting or up for ambient light.
- Storage Tray:Optional storage trays are painted to match table finish and offered in standard configurations for each size table.
- Privacy Screens:Optional 15"-high privacy screen comprises a silver mounting channel that holds .25"-thick satin etched glass. It requires a pre-drilled top surface for on-site installation.

Wood Facade	Metal Facade	
5456	5441	72"w x 42"d x 30"h
5462	5447	96"w x 42"d x 30"h
5468	5453	120"w x 42"d x 30"h
5457	5442	72"w x 42"d x 37"h
5463	5448	96"w x 42"d x 37"h
5469	5454	120"w x 42"d x 37"h
5458	5443	72"w x 42"d x 43"h
5464	5449	96"w x 42"d x 43"h
5470	5455	120"w x 42"d x 43"h

