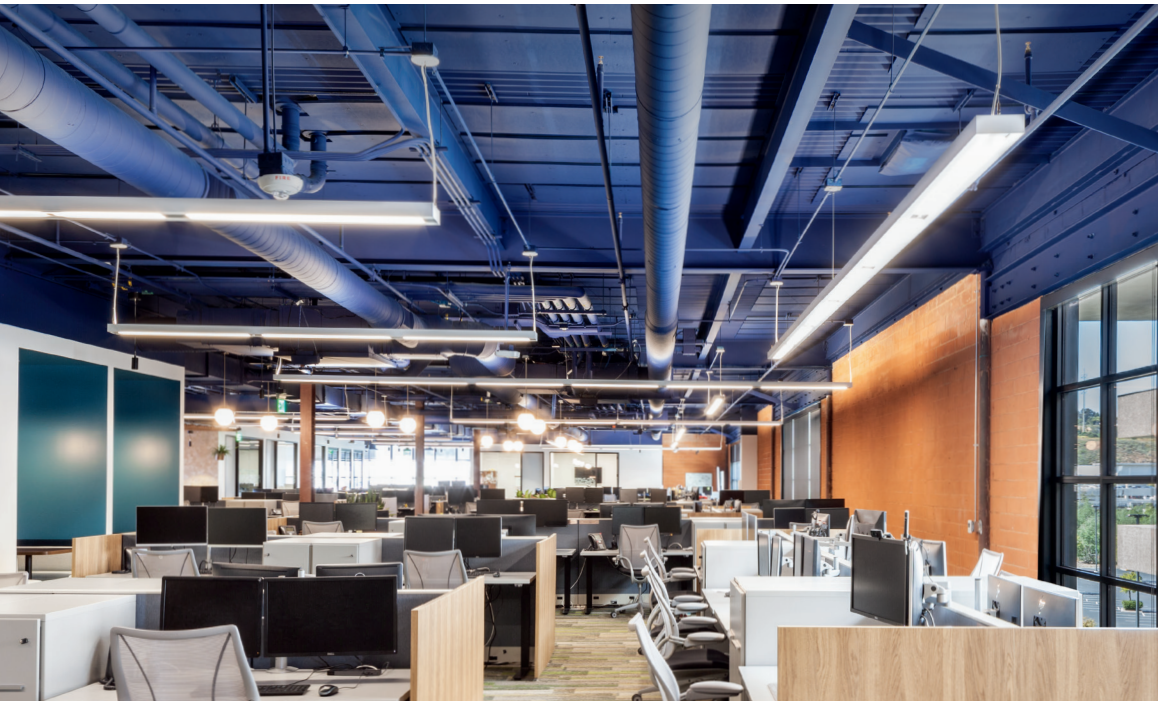


TECTUM® Finale™
TECTUM Finale PB
with Plant-based Binder Infill
Acoustical Ceiling Panels
coarse texture



FAST134
Select Items Ship Fast
armstrongceilings.com/fast134



Tectum Finale ceiling panels in custom color

CAD/Revit® drawings at:
armstrongceilings.com/cadrevit



Also available as Wall Panels

plus capabilities
to do more



armstrongceilings.com/capabilities
See more photos at:
armstrongceilings.com/photogallery

Tectum® Finale™ and Finale PB ceilings provide durable, acoustical solutions for a wide variety of applications.

KEY SELECTION ATTRIBUTES

- new** Tectum Finale and Finale PB ceilings now have UL® Certified acoustics with acoustical testing and reporting that align with industry-wide best practices
- new** Finale PB panels are manufactured with a plant-based binder infill
- new** Sustainable Beyond Standard: Finale PB custom size panels in 1" thickness and all standard Finale PB panels are part of the Sustain® portfolio, and meet the most stringent industry sustainability compliance standards today
- 1" thick Finale panels with 1" factory-attached furring are now available as standard items
- Panels sold by the piece – get the quantity you need without extra material
- Built-in furring pieces with factory-filled panels provide maximum sound control and install 2.5x faster than Direct-Attach for the same acoustic performance
- Excellent sound absorption – 1" panels have NRC up to 0.90 (mounting method dependent)
- Panel sizes include 23-3/4" x 48", 23-3/4" x 96", 47-3/4" x 48", and 47-3/4" x 96", with bevel on long edges, square on short sides. Custom panels are available in additional sizes and thicknesses upon request at: ASQuote@armstrongceilings.com
- CleanAssure™ family of products – includes disinfectable panels, suspension systems, and trim (standard colors)

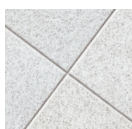
- new** Select products included in the FAST134 program – ready to ship in 4 weeks or less
- Abuse-resistant for active spaces
- new** Can be mechanically fastened to a wide variety of surfaces including masonry, drywall, wood, and more

COLORS Due to printing limitations, shade may vary from actual product.

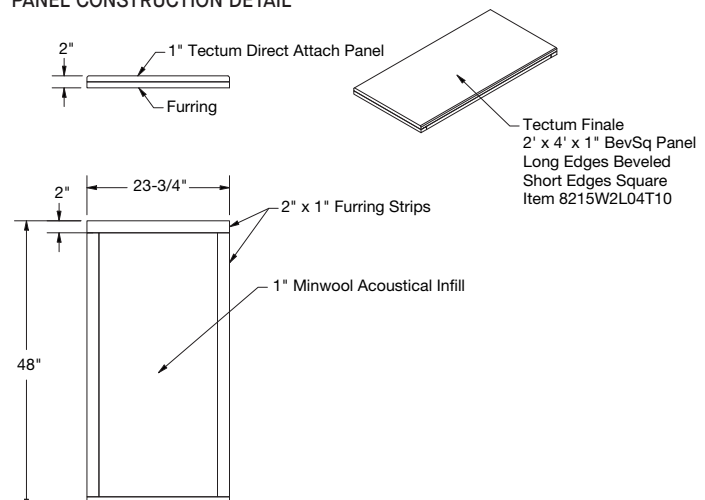
Standard Colors



DETAILS



PANEL CONSTRUCTION DETAIL



TECTUM® Finale™ TECTUM Finale PB

with Plant-based Binder Infill
Acoustical Ceiling Panels
coarse texture



For LEED contribution visit
armstrongceilings.com/greenengine

energy management	construction waste mgmt	regional materials	design for flexibility	EPD	recyclable/extended producer resp.	bio-based materials	FSC® (for wood)	recycled content	sourcing of raw materials	material ingredient reporting	low emitting materials	lighting quality	acoustics

LOCATION DEPENDENT

VISUAL SELECTION

	Item No. ♦	Dimensions W x L x D (Inches)
TECTUM® Finale™ Ceiling Panels	8215W2L04T10__	23-3/4 x 48 x 1"
	8215W4L04T10__	47-3/4 x 48 x 1"
	8215W2L08T10__	23-3/4 x 96 x 1"
	8215W4L08T10__	47-3/4 x 96 x 1"
TECTUM® Finale PB Ceiling Panels	8255W2L04T10__	23-3/4 x 48 x 1"
	8255W4L04T10__	47-3/4 x 48 x 1"
	8255W2L08T10__	23-3/4 x 96 x 1"
	8255W4L08T10__	47-3/4 x 96 x 1"

FAST
4 WEEKS
or Less

FAST134 program items ready to ship from manufacturer in 4 weeks or less.
Up-to-date lead times and product options (sizes and colors) at armstrongceilings.com/fast134

- ♦ When specifying or ordering, include the appropriate 3-digit color suffix: TNA = Natural (unpainted) or TWH = White (e.g. 8215W2L04T10 I W H)
Four-sided beveled edge panels are recommended in adjoining panel installations.
For special sizes and colors, call TechLine at 1 877 276-7876.

PERFORMANCE

Dots represent high level of performance.

	Fire Rating	Light Reflect	Anti-Mold/Mildew	Sag Resist	Fog	Impact	Scratch	30-Yr Warranty
(White only)								
Bio-Block								
Humi-Guard+								
CleanAssure™ Disinfectable Panels								
DURABILITY								
Class	Up to							
A	0.75							
Class	Up to							
A	0.75							
Class	Up to							
A	0.75							
Class	Up to							
A	0.75							
Class	Up to							
A	0.75							

ACOUSTICAL INFORMATION

Total Panel Thickness	UL Classified Acoustics	Mounting Method
1" Finale with integral Minwool insert & 1" furring	0.85 0.90	A D-20
1" Finale PB with plant-based binder infill & 1" furring	0.80 0.85	A D-20

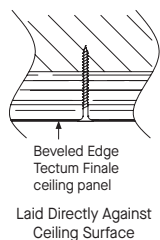
ACCESSORIES

Item No. ♦♦	Description	QTY/CTN
8187L30__	#8 x 3" Painted Head Sharp Point Screw	1000
8188L30__	#8 x 3" Painted Head Drill Point Screw	1000
8189L32__	3-1/4" Painted Head CMU Screw	500

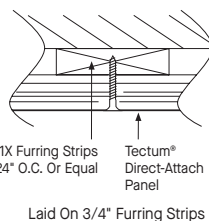
- ♦♦ When specifying or ordering, include the appropriate 3-digit color suffix TNA = Natural, TWH = White (e.g. 8187L30 I W H)

ACOUSTICAL MOUNTING METHODS

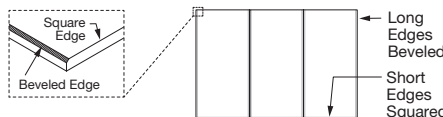
Mounting A



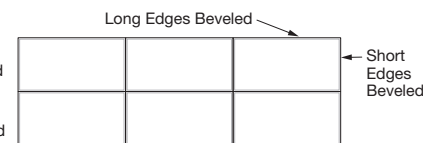
Mounting D-20



EDGE DETAIL RECOMMENDATIONS



NOTE: Use Beveled Edge/Square End for the above panel layout.



NOTE: Stacked bond patterns are possible, but not recommended. Field trimming panels may be required to achieve desired fit and alignment.

PHYSICAL DATA

Material

Cementitious Wood Fiber; FSC® certified. For more information about FSC-certified fire-retardant products, or to view our FSC-certification letter, contact TechLine at 1 877 276-7876.

Tectum® Finale™ panels have a Minwool infill panel. Finale™ PB panels have a fiberglass plant-based binder infill.

Surface Finish

Factory-applied latex paint on abuse-resistant silicate surface coating. Natural finish is unpainted, but after the coating is applied, panels may appear light in color.

Panels are painted on the edge, however due to fibrous texture of panels, certain angles and lighting conditions will make edge appear less or more painted.

Can be field painted up to 6 times without impacting acoustic or fire performance. See installation instructions for details on paint and application method.

Fire Performance

Class A per IBC. Flame Spread Index 25 or less and Smoke Developed Index 50 or less when tested in accordance with ASTM E84.

Tectum Finale: CAN/ULC S102 surface burning characteristics. Flame Spread Index of 25 or less and Smoke Developed Index of 50 or less.

Humidity/Sag Resistance

HumiGuard® Plus panels are recommended for areas subject to high humidity, up to, but not including, standing water and outdoor applications.

Mold/Mildew Protection

Ceiling panels with BioBlock® performance resist the growth of mold and mildew.

Installation Considerations

Use caution and wear appropriate hand, eye, and dust mask protection when cutting and installing Tectum panels. Refer to installation instructions for complete details and cutting recommendations.

Application Considerations

Color variation among panels is common due to the natural characteristics of the wood on White and Natural panels.

Wood fibers may appear orange on natural-colored panels due to the characteristics of the wood.

1" furring will be visible from the side. Furring can be field painted to match panel finish.

Design Support

For custom design assistance contact ProjectWorks® Design Services or visit armstrongceilings.com/projectworks

Specification Consideration

FSC-certified panels available upon request. Attention: For FSC-certified wood products to maintain their CoC certification, products must be sold to a CoC-certified distributor or directly to the installing contractor. Failure to do so breaks the CoC.

Seismic Restraint

Tectum ceiling panels are approved for application in all seismic areas when installed per Armstrong Ceilings Installation Instructions.

Cleaning and Disinfecting

Cleaning and CDC approved disinfecting options available on armstrongceilings.com/cleaning

Warranty

30-Year Performance Guarantee and Warranty when installed with Armstrong® Suspension System. Details at armstrongceilings.com

FAST134 Program Considerations

Size of Job Matters: Big jobs over 2500 SF, or 50 pieces for shapes/vertical elements, will have longer lead times.

Location Matters: Transit time not included. We are ready to ship in 1 week on FAST1 items. However, transit to the states west of Wyoming may add time.

Distributor Truck Schedule Matters: We rely on distribution to help move products around the country. When speed matters, work with your local distributor to ensure FAST134 service.

Stock vs. Made-to-Order Matters: FAST3 & FAST4 items are made-to-order and will ship direct to distributor. FAST1 (stocked items) will go through distribution and depend on distributor truck schedules.

Weight and Pieces

1" - 3 LBS/SF, sold by the piece