



# SUSTAIN<sup>®</sup>

## Ceiling Systems

Reach New  
Heights of  
Sustainability

**Armstrong<sup>®</sup>**  
World Industries

# SUSTAIN<sup>®</sup>

## Meet Your Sustainability Goals Your Way

No matter what sustainability or design challenges you're facing, Armstrong® Sustain® portfolio makes your decisions simpler by offering the largest forward-thinking portfolio of healthy ceiling and wall solutions with verified material transparency, and low-embodied carbon\*.

In an industry where meeting evolving sustainability goals can be an increasingly complex equation, Sustain strives to make your decisions simple.

Just look for the Sustain icon.



**SUSTAIN<sup>®</sup>**  
High Performance  
Sustainable  
Ceiling Systems

\* Embodied carbon reduction based on EC3 baseline for ceilings. The EC3 tool is managed by and available through [Building Transparency](#).

FeltWorks® Blades  
Ebbs and Flows, ▶  
The Sheward Partnership,  
Philadelphia PA





# Healthy, Sustainable, Verified

Select products with verified performance and ingredient transparency with consistent reporting of product contents and associated health information, harmonized with industry programs.

**Declare.**



▼ Ultima® Ceiling Panels with Silhouette® 9/16" Suspension System and USAI® Linear Lighting; Hudson Bay Companies, New York, NY; SOM Architects







▲ Ultima® Ceiling Panels with Prelude® 15/16" Suspension Systems; Loganville Elementary School, Loganville PA; RLPS Architects

# Cut Carbon

Leading edge solutions that reduce carbon across a product's entire lifecycle:

- Broadest portfolio of low-embodied carbon solutions
- By focusing on embodied carbon, we can deliver solutions to minimize the overall project's impact
- Deeply committed to its own sustainability goals, Armstrong is constantly working to innovate and add new solutions

Minimize overall project environmental impact by selecting leading edge solutions from the broadest portfolio of low-embodied carbon ceiling and wall products that provide carbon reductions across a product's entire lifecycle.

The Sustain® portfolio makes selecting ceiling and wall solutions that meet sustainability criteria easier and less time consuming at scale. Solutions for every design goal, with easy-to-specify products that clearly communicate transparency and optimization information.



▲ WoodWorks® Grille Tegular 24" x 48" panels in Golden Maple finish; USAI® Micro™ downlights

# Decisions, Simplified



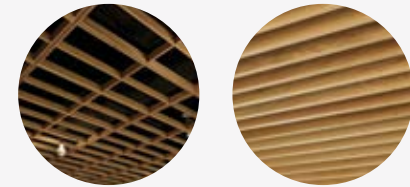




# WoodWorks® Solid Ceiling & Wall Panels

## FINISHES AVAILABLE \*

Due to printing limitations, shade may vary from actual product.



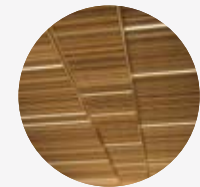
new

WoodWorks®  
Open Cell



new

WoodWorks®  
Grille - Classics



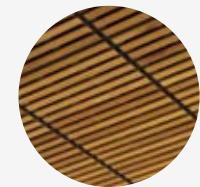
new

WoodWorks®  
Grille - Forté



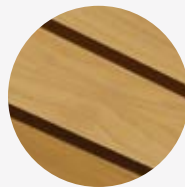
new

WoodWorks®  
Grille Tegular



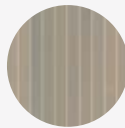
new

WoodWorks®  
Linear Tegular



new

WoodWorks®  
Linear Solid



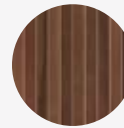
Bleached  
Grey (GBG)



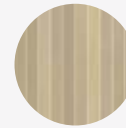
Classic  
Grey (GCG)



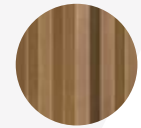
Carbon  
Grey (GCB)



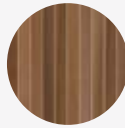
Rich  
Mahogany (GRY)



Antique  
Oak (GAO)



Red Oak (GRK)



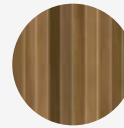
English  
Chestnut (GEC)



Golden  
Maple (GGM)



Natural  
Walnut (GWN)

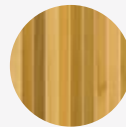


Warm  
Oak (GWO)

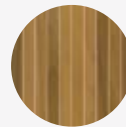


Forest  
Walnut (GFW)

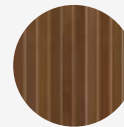
## LEGACY FINISHES



Maple  
(GMP)



Light  
Cherry (GLC)



Dark  
Cherry (GDC)



Custom Wood  
Species and Finishes  
Available\*

\* Colors and tints that are pre-qualified to meet Sustain® portfolio requirements are available upon request. Other made-to-order colors and tints must be evaluated if sustainability criteria is required. Lead time will increase.

NOTE: Painted White is not included in the Sustain portfolio.

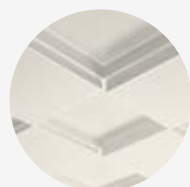
# MetalWorks™ Ceiling Panels



MetalWorks™  
Blades - Classics



MetalWorks™  
Clip-on



MetalWorks™  
3D



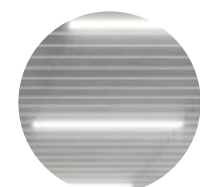
MetalWorks™  
Torsion Spring



MetalWorks™  
Torsion Spring  
Shapes



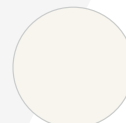
MetalWorks™  
Shapes  
for DesignFlex®



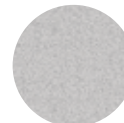
MetalWorks™  
Immix™ Blades



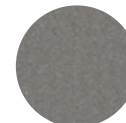
MetalWorks™  
Immix™ Linear



Whitelume  
(WHA)



Silverlume  
(SIA)



Gun Metal  
(MYA)



Cool Maple  
(LCM)



Honey Maple  
(LHM)



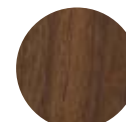
Honest Maple  
(LHS)



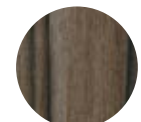
Spring Cherry  
(LSC)



Beloved Oak  
(LBO)



English Walnut  
(LEW)



Midnight  
Forest  
(LMD)

MetalWorks Immix panels are only available in WHA, SIA, and MYA finishes





▲ WoodWorks® Open Cell 24" x 48" panels in Carbon Grey, wall-to-wall installation



▲ FeltWorks® Blades – VarAffix™ 12" x 120" blades in Iron (FIR), independently suspended



# FeltWorks® Ceiling & Wall Panels



FeltWorks®  
Acoustical Panels

NOTE: Custom size panels are also part of the Sustain® portfolio

## COLORS AVAILABLE

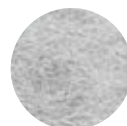
Due to printing limitations, shade may vary from actual product.



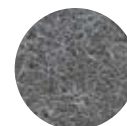
White  
(FWH)



Beige  
(FBG)



Light Grey  
(FLG)



Dark Grey  
(FDG)



Black  
(FBL)



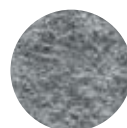
FeltWorks®  
Blades – HookOn  
FeltWorks®  
Open Cell



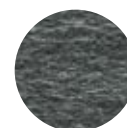
Cotton  
(FCN)



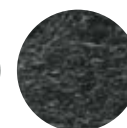
Whisper  
(FWR)



Flannel  
(FFL)



Smoke  
(FSE)



Shadow  
(FSW)



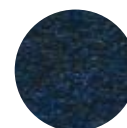
Midnight  
(FMN)



Wheat  
(FWT)



Mocha  
(FMC)



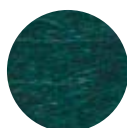
Celestial  
(FCL)



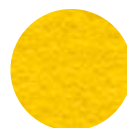
Elderberry  
(FEB)



Iris  
(FIS)



Highland  
(FHL)



Buttercup  
(FBC)

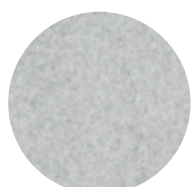


Tangerine  
(FTE)



Apple  
(FAP)

NOTE: Custom size panels are also part of the Sustain® portfolio



**new** FeltWorks®  
Blades –  
VarAffix™



Iron  
(FIR)



Graphite  
(FGH)



Cloud  
(FCD)



Fog  
(FOG)



Frost  
(FFS)



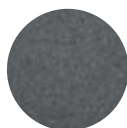
Ecru  
(FEC)



Bedrock  
(FBR)



Nickel  
(FNK)



Steel  
(FST)



Sand  
(FSD)



Coconut  
(FCT)



Peat  
(FPT)

# Tectum® Wood Fiber Ceiling & Wall Panels

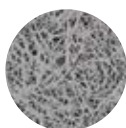


Tectum®  
DesignArt™ –  
Shapes  
Tectum®  
DesignArt™ –  
Lines

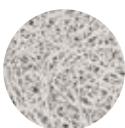
NOTE: Custom size panels  
in 1" thickness are also part  
of the Sustain® portfolio

## COLORS AVAILABLE

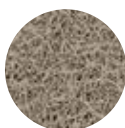
Due to printing limitations, shade may vary from actual product.



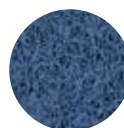
Basalt  
(TBT)



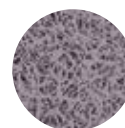
Polar  
(TPO)



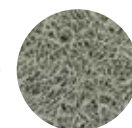
Oat  
(TOT)



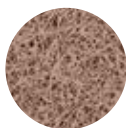
Rainstorm  
(TRS)



Lilac  
(TLC)a



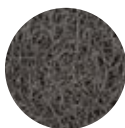
Boxwood  
(TBW)



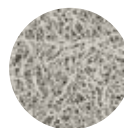
Feldspar  
(TFS)



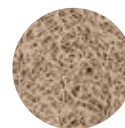
Rose  
(TRO)



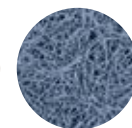
Riverstone  
(TRV)



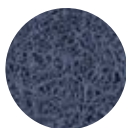
Limestone  
(TLM)



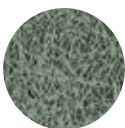
Hay  
(THY)



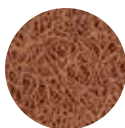
Pacific  
(TPC)



Twilight  
(TTT)



Fern  
(TFN)



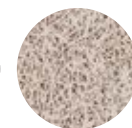
Topaz  
(TTZ)



Honeysuckle  
(THS)



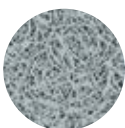
Coffee  
(TCE)



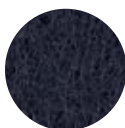
Fossil  
(TFL)



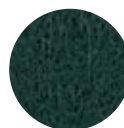
Sandstone  
(TSS)



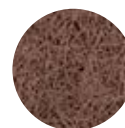
Mist  
(TMT)



Ocean  
(TOC)



Ivy  
(TIV)



Bronzite  
(TBZ)



Marigold  
(TMG)



Natural  
(TNA)



Tectum®  
Lay-in



Tectum®  
Tegular



Tectum®  
Direct-Attach  
Tectum® Create!™  
Direct-Attach  
Tectum®  
Finale™ PB



Tectum®  
High NRC



Natural  
(TNA)



White  
(TWH)

NOTE: Custom size panels  
in 1" thickness are also part  
of the Sustain® portfolio



# CastWorks™ Architectural Forms Ceiling Panels



CastWorks™  
Metaphors® Ceiling  
Panels



CastWorks  
Metaphors® Coffers

## **COLORS AVAILABLE \***

Due to printing limitations, shade may vary from actual product.



White  
(WH)



Silver  
Grey (SG)



Gun Metal  
Grey (MY)



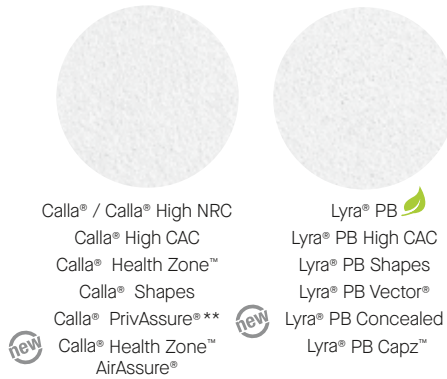
Black  
(BL)



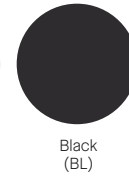
Available in  
any color!\*



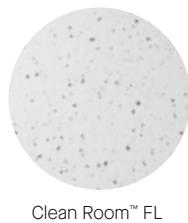
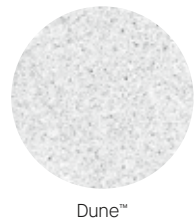
▲ Tectum® DesignArt™ – Shapes Direct-Attach wall panels, Calla® 9/16" Square Tegular and 9/16" Suprafine® Grid



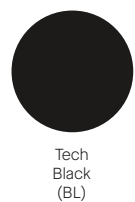
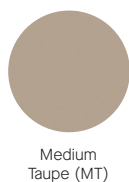
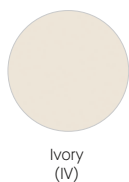
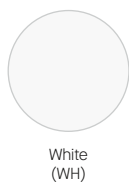
**COLORS AVAILABLE \***  
Due to printing limitations, shade may vary from actual product.



\*\* PrivAssure panels only available in White  
\*\*\* Backstage Noir panels only available in Black



\* Colors and tints that are pre-qualified to meet  
Sustain® portfolio requirements are available  
upon request. Other made-to-order colors and  
tints must be evaluated if sustainability criteria is  
required. Lead time will increase.





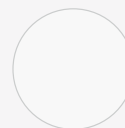
# AcoustiBuilt® Seamless Acoustical Ceiling & Wall System



AcoustiBuilt®  
Fine-Texture Finish

## COLORS AVAILABLE \*

Due to printing limitations, shade may vary from actual product.



White  
(WH)



Black  
(BL)



**new** Fine-texture  
finish available  
in any color!\*

## Suspension Systems



Prelude® XL®



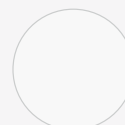
Suprafine® XL®  
Suprafine® XM  
for DesignFlex®



Interlude® XL®



Silhouette® XL®



White  
(WH)



Black  
(BL)



Available in  
any color!

Drywall Grid Systems  
not available in colors



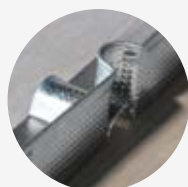
FrameAll™ Drywall Grid  
ShortSpan® Drywall  
Framing System  
QuikStix™ Drywall  
Grid System for Soffits



DynaMax®  
DynaMax® Plus  
Prelude® XL Max®  
Structural Grid  
System



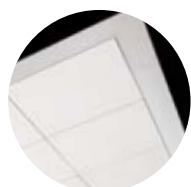
SimpleSoffit®  
Drywall Framing  
System



SimpleCurve®  
and KAM

\* Colors and tints that are pre-qualified to meet Sustain® portfolio requirements are available upon request. Other made-to-order colors and tints must be evaluated if sustainability criteria is required. Lead time will increase.

## Trim & Transitions



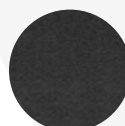
Axiom® Classic,  
Vector®,  
Knife Edge®, Interlude®,  
Paired



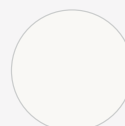
Axiom® Transitions,  
Moldings and  
Column Rings,  
Glazing Channel



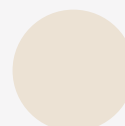
Blizzard White  
(ZW)



Charcoal  
Black (ZB)



White  
(WH)



Ivory  
(IV)



Medium Taupe  
(MT)



Light Grey  
(LG)



Axiom®  
Axiom Shade  
Pockets  
Core and Shell



Axiom®  
Direct &  
Indirect  
Light Coves



Grey Stone  
(GS)



Tech Black  
(BL)



Silver Satin  
(SA)



Silver Grey  
(SG)



Gun Metal  
Grey (MY)

# TAKE THE NEXT STEP

1 877 276 7876

Customer Service Representatives  
7:45 a.m. to 5:00 p.m. EST  
Monday through Friday

**TechLine** – Technical information, detail drawings,  
CAD design assistance, installation information,  
other technical services – 8:00 a.m. to 5:30 p.m. EST,  
Monday through Friday. FAX 1 800 572 8324  
or email: [techline@armstrongceilings.com](mailto:techline@armstrongceilings.com)

For complete Sustain® overview and product  
transparency documents, visit:

[armstrongceilings.com/sustain](https://armstrongceilings.com/sustain)

[armstrongceilings.com/commercial](https://armstrongceilings.com/commercial)

Latest product news

Standard and custom product information

Online catalog

CAD, Revit®, SketchUp® files

A Ceiling for Every Space® Visual Selection Tool

Product literature and samples – express service  
or regular delivery

Contacts – reps, where to buy, who will install

Proud supporter of Embodied Carbon  
in Construction Calculator (EC3)\*

All Sustain products are listed in the  
mindful MATERIALS® library



\* The EC3 tool is managed by and available  
through Building Transparency.

[armstrongceilings.com/sustain](https://armstrongceilings.com/sustain)

SketchUp® is a registered trademark of Trimble, Inc.; Revit® is a registered trademark of Autodesk, Inc.;  
Declare® is a registered trademark of the International Living Future Institute®; The Health Product  
Declaration® logo is a registered trademark of HPD Collaborative; mindful MATERIALS® is a registered  
trademark of mindful MATERIALS, Inc.; USAI® and Micro™ are trademarks of USAI, LLC; all other  
trademarks used herein are the property of AWI Licensing LLC and/or its affiliates  
© 2023 AWI Licensing LLC · Printed in the United States of America

On the cover: ►  
Lyra® PB ceiling panels  
in Earl Grey Teak

**Armstrong®**  
World Industries