

Assembly Instructions ■

CaféWay™ Tables

Models ECELP, ECOCP & ECRDP

July 2018

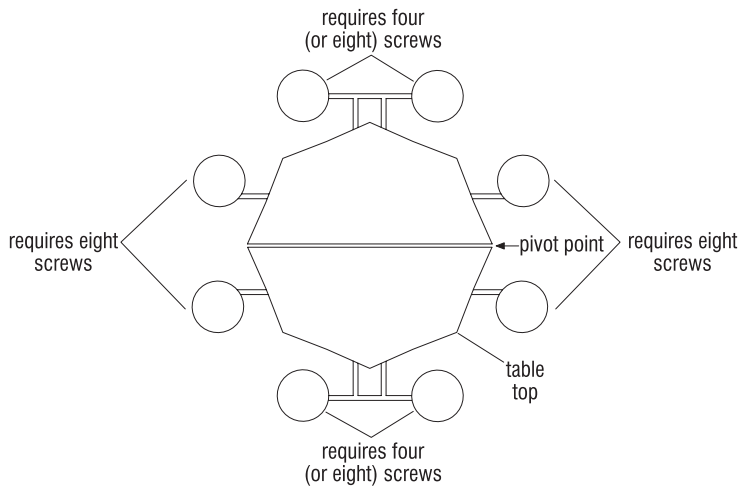


Figure 1

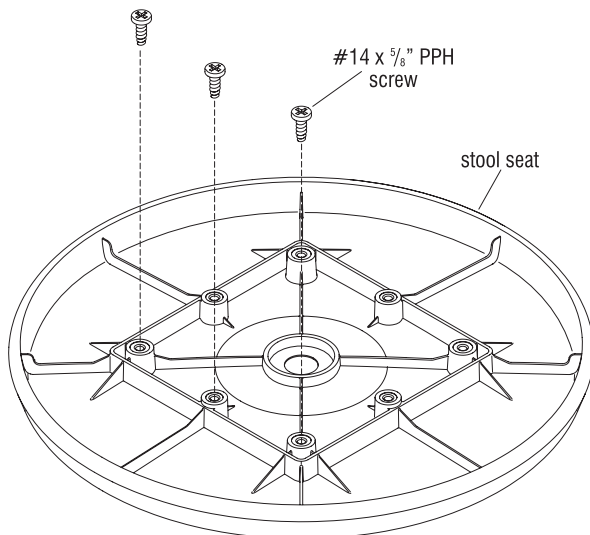
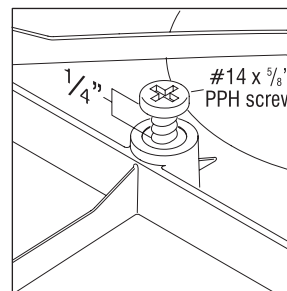


Figure 2



Detail A

Note: This instruction contains installation steps for stool seats (Pages 1-2), bench seats (Page 3), and middle bench seats (Page 4).

Stool Seat Installation

1. Stools that will be installed near the pivot point of the table are required to use all eight mounting locations. Stools located away from the pivot location are only required to use the four outer corner mounting locations (Figure 1).

Note: Enough screws are supplied to use all eight mounting locations on each stool if desired.

2. Remove stools and #14 x $\frac{5}{8}$ " attachment screws from the shipping box. Place stool seats upside down on a flat protective surface.
3. Align three screws, two in each adjoining corner, and one in between the corners as illustrated (Figure 2).
4. Install the three #14 x $\frac{5}{8}$ " screws, but do not drive the screws in all the way. Leave a $\frac{1}{4}$ " gap between the bottom of the screw head and stool. This will allow the stool plate adapter to slide in between the screw head and seat (Detail A).



CAUTION

Assemble units as described herein only. To do otherwise may result in instability. All screws, nuts and bolts must be tightened securely and must be checked periodically after assembly. Failure to assemble properly, or to secure parts may result in assembly failure and personal injury.



Assemble units as described herein only. To do otherwise may result in instability. All screws, nuts and bolts must be tightened securely and must be checked periodically after assembly. Failure to assemble properly, or to secure parts may result in assembly failure and personal injury.

4. Align partially installed screws on seat with slotted holes on the stool plate adapter (Figure 3).
5. Slide plate adapter into place and align vacant seat mounting holes with stool plate holes (Figure 4).
6. Install five #14 x $\frac{5}{8}$ " screws into the vacant attachment holes and torque to 15-20 in/lbs. Next, twist down the three screws on the slotted hole side and torque them to 15-20 in/lbs (Figure 4).

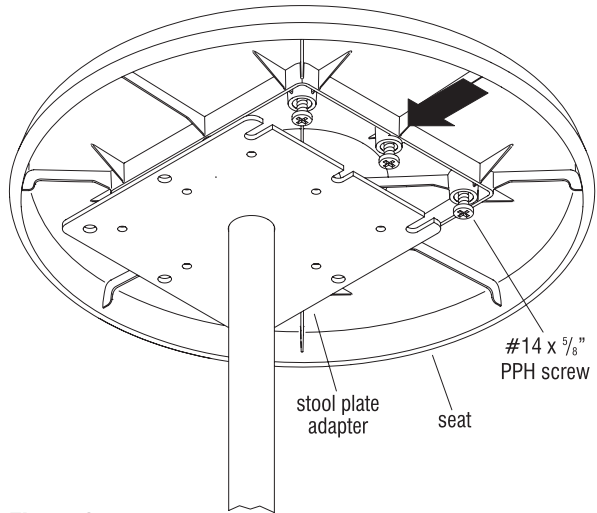


Figure 3

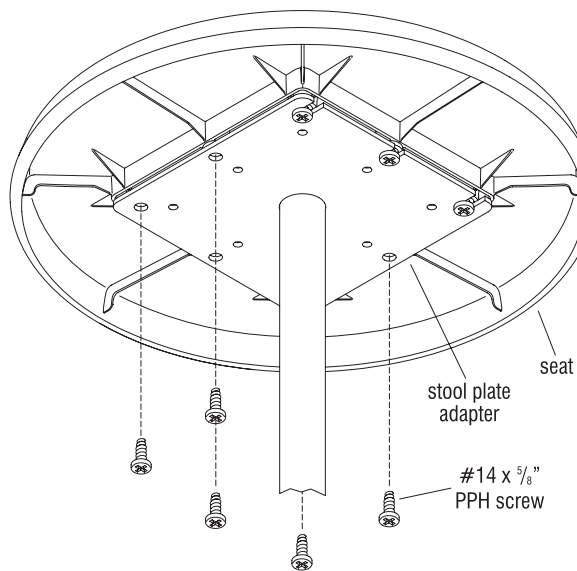


Figure 4



Assemble units as described herein only. To do otherwise may result in instability. All screws, nuts and bolts must be tightened securely and must be checked periodically after assembly. Failure to assemble properly, or to secure parts may result in assembly failure and personal injury.

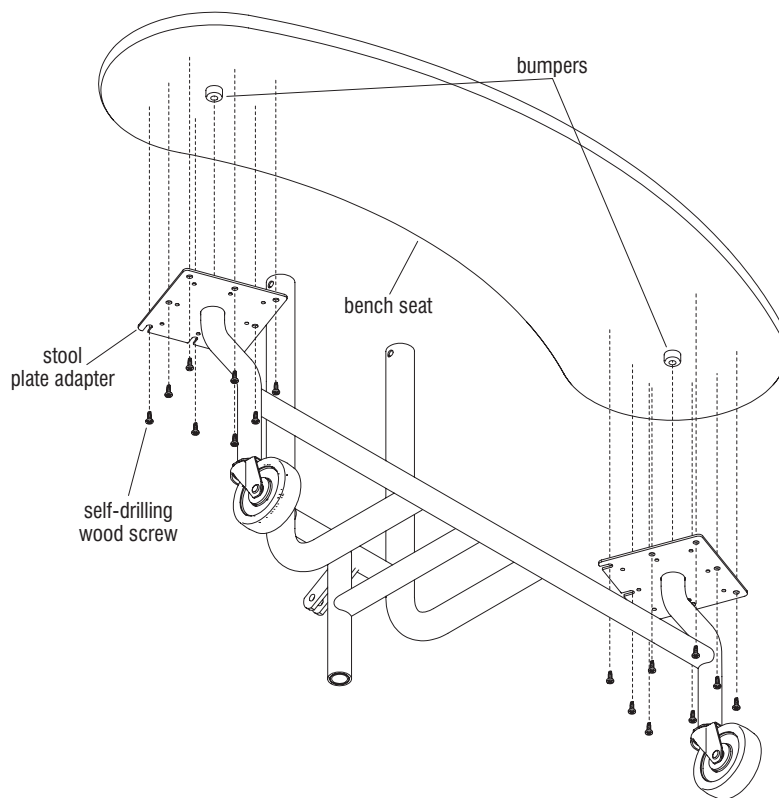


Figure 5

Optional Bench Seat Installation

1. Remove bench seat and self-drilling wood screws from the shipping box (Figure 5).
2. Align bumpers on underside of bench with center holes on stool plate adapter. This will help hold the bench seat in place while screws are installed (Figure 5).
3. Using the self-drilling wood screws provided, attach bench seat to stool plate adapter (Figure 5).



Assemble units as described herein only. To do otherwise may result in instability. All screws, nuts and bolts must be tightened securely and must be checked periodically after assembly. Failure to assemble properly, or to secure parts may result in assembly failure and personal injury.

Optional Middle Bench Installation

1. Fold table into the storage position before attachment of bench can take place (Figure 6).
2. The bench assembly is designed to span the distance between the vertical components of the two middle leg assemblies, which in the folded position are suspended in the air (Figure 6).
3. Once the table is in the storage position, attach the "fixed bench leg" to the table's middle leg assembly. Next, slide the "non-fixed bench leg" on the opposite end of bench into position so that tube can be inserted inside the upright of the other middle leg assembly (Figure 7).
4. Fasten down the bench to the table leg using a supplied $\frac{5}{16}$ " bolt and nylock nut. Tighten nut and bolt until the nut stops against the pipe. The parts will need to rotate during the opening and closing of the table so make sure not to over-tighten. Bolt head must be face away from the table (Figure 7).
5. Next, align the hole of the "non-fixed bench leg," to the table's mid leg. Fasten the bench down to the table leg using a $\frac{5}{16}$ " bolt and nylock. Tighten nut and bolt until the nut stops against the pipe. The parts will need to rotate during the opening and closing of the table so make sure not to over-tighten. Bolt head must be face away from the table (Figure 7).
6. Test table for proper operation.

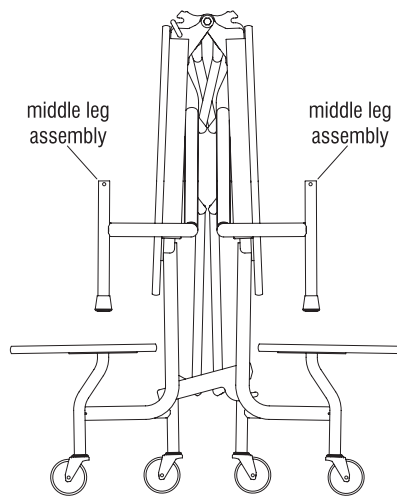


Figure 6
Storage Position

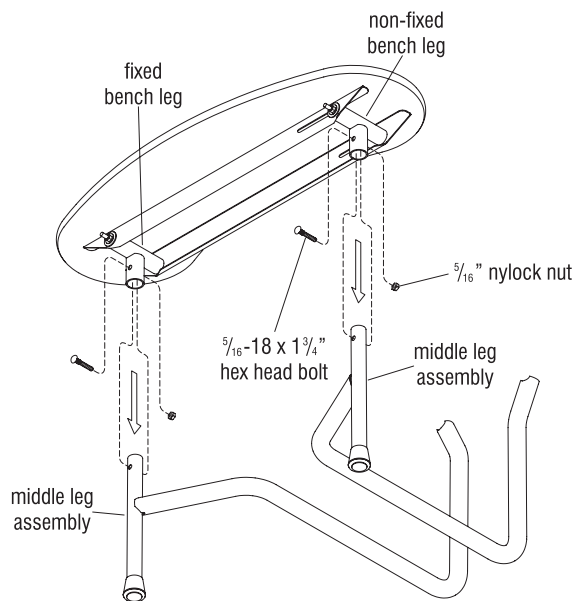


Figure 7