

Features

- Required for Purist® and Falling Water® wall-mount touchless faucets
- Insight™ adaptive infrared technology
- 0.5 gpm (1.9 lpm) maximum flow rate
- On demand on and off. Maximum 30 second cycle time
- Ideal for use with KOHLER vessels
- Low-lead (SDWA) compliant

Material

- Brass

Technology

- Does not require battery or power cell

Installation

- Requires a plug-in AC power supply
- Optional spout-mounting location
- 13480-A and 13481-A power supplies are designed for North America outlets. For international outlets please use 13480 and 13481
- Valve control box includes stop valve therefore it can be connected to waterline directly. Does not require additional stop valve

Required Products/Accessories

- [K-13480](#) AC Single Supply
- or
- [K-13480-A](#) AC Single Supply
- or
- [K-13481](#) Multi-Outlet Power Supply
- or
- [K-13481-A](#) Multi-Outlet Power Supply



ADA

CSA B651

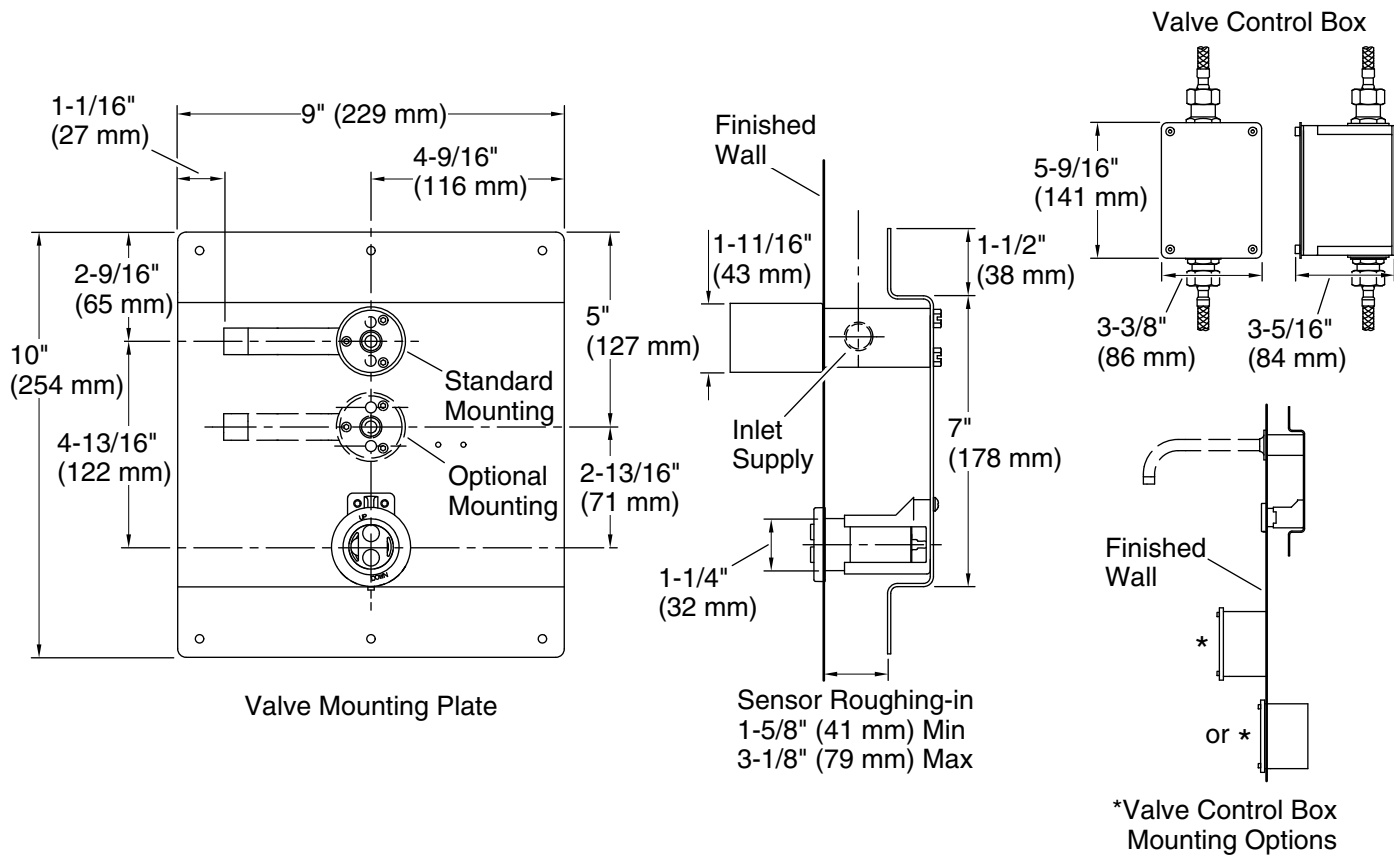
OBC

Codes/Standards

ASME A112.18.1/CSA B125.1
NSF/ANSI/CAN 372
ADA
ICC/ANSI A117.1
CSA B651
OBC
IAPMO Certification

KOHLER® One-Year Limited Warranty

See website for detailed warranty information.



Technical Information

All product dimensions are nominal.

Power source: Hardwire - AC, not included

Faucet:

Flow rate: 0.5 gal/min (1.9 l/min)

Pressure: 45 psi (3.1 bar)

Notes

Install this product according to the installation instructions.

Reference the installation instructions for specific framing information.

Requires an AC power supply (not included).

For use with faucet trim: K-T11837, K-T11839, K-T11840, and K-T11841.

Valve control box can be installed in the wall or on the wall.

ADA, OBC, CSA B651 compliant when installed to the specific requirements of these regulations.