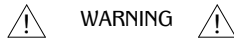


PCS82B/U1

PROPRIETARY AND CONFIDENTIAL.

ALL DIMENSIONS HAVE A $\pm 1/16"$ TOLERANCE UNLESS OTHERWISE SPECIFIED. WE DO NOT RECOMMEND DRILLING OR CUTTING ANY HOLES BEFORE RECEIVING A PRODUCT OR A PRODUCT SAMPLE.



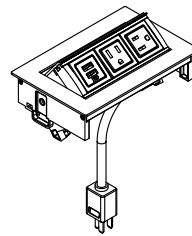
WARNING

- For indoor use only.
- For use on a normally dry work surface.
- If any malfunction occurs, do not attempt to disassemble or repair.
- Allow enough clearance for part operation.
- Avoid liquid spills into outlet.
- Do not insert foreign objects into the socket.

SPECIFICATIONS

- 6 ft. cord length.
- Table thickness is $7/8"$ MIN. to $1-11/16"$ MAX.
- Plug dimension is $1-11/32" \times 1-1/32" \times 7/8"$.
- USB-A ports are for charging use only.

TABLE OF CONTENTS



..... 1X PCS82B/U1



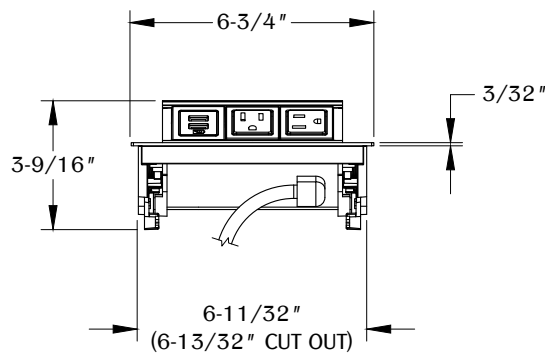
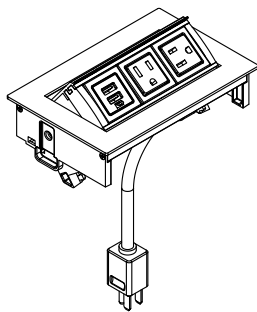
..... 1X Wire Manager



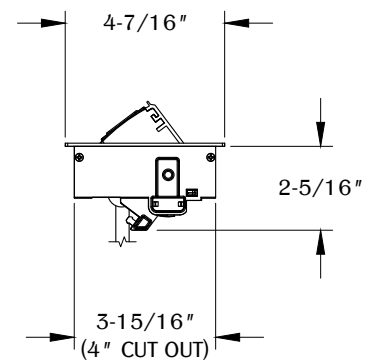
..... 2X Metal Clips



..... 2X Wing Clamps

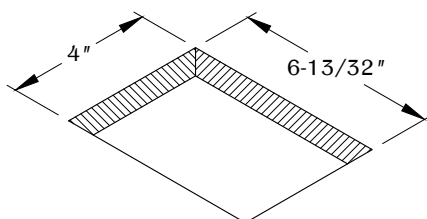


FRONT VIEW



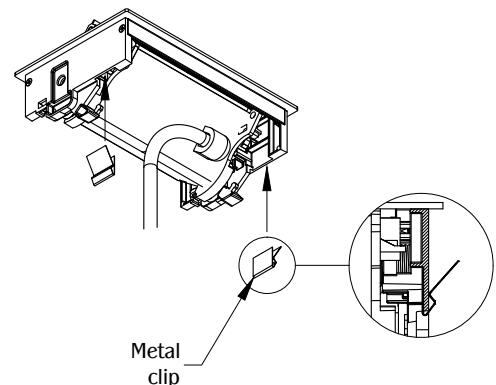
SIDE VIEW

1



Determine the position and location of the unit in the work surface. Cut the hole at $6-13/32" \times 4"$. Place and allow enough clearance for unit operation. DO NOT place unit where the cables are strained or trapped.

2



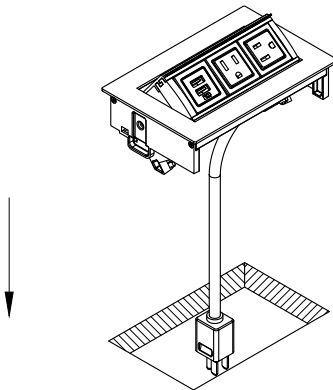
Place the metal clip at the front of each side of the unit.
(NOTE: Metal clips are for use in hard surface material only as an optional mounting means.)

PCS82B/U1

PROPRIETARY AND CONFIDENTIAL.

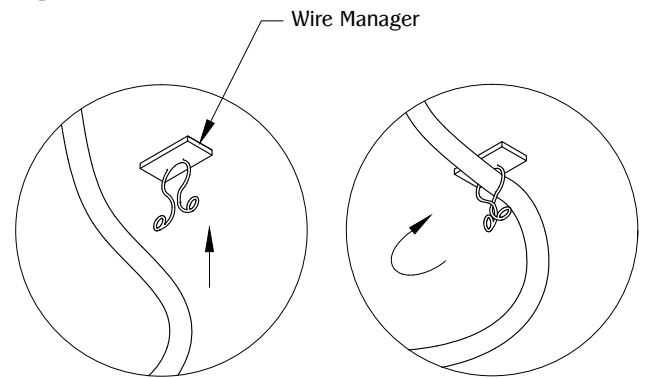
ALL DIMENSIONS HAVE A $\pm 1/16"$ TOLERANCE UNLESS OTHERWISE SPECIFIED. WE DO NOT RECOMMEND DRILLING OR CUTTING ANY HOLES BEFORE RECEIVING A PRODUCT OR A PRODUCT SAMPLE.

3



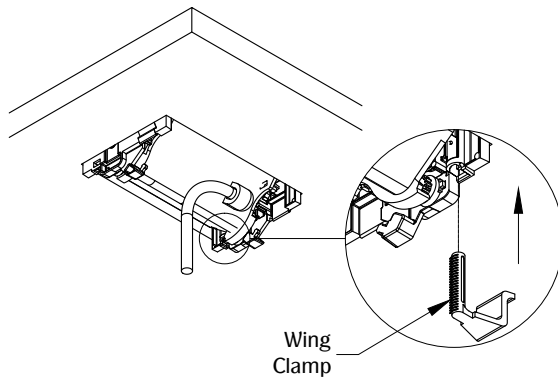
Guide the power cord through the cut out. Install the unit into the cut out and make sure it is fully leveled onto the surface.

4



Optional wire manager.

5



Secure unit by turning bottom wing clamp.