

## MM6/SET

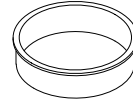
PROPRIETARY AND CONFIDENTIAL.

ALL DIMENSIONS HAVE A  $\pm 1/32"$  TOLERANCE UNLESS OTHERWISE SPECIFIED. WE DO NOT RECOMMEND DRILLING OR CUTTING ANY HOLES BEFORE RECEIVING A PRODUCT OR A PRODUCT SAMPLE.

### SPECIFICATIONS

- Maximum cord diameter is  $5/8"$ .

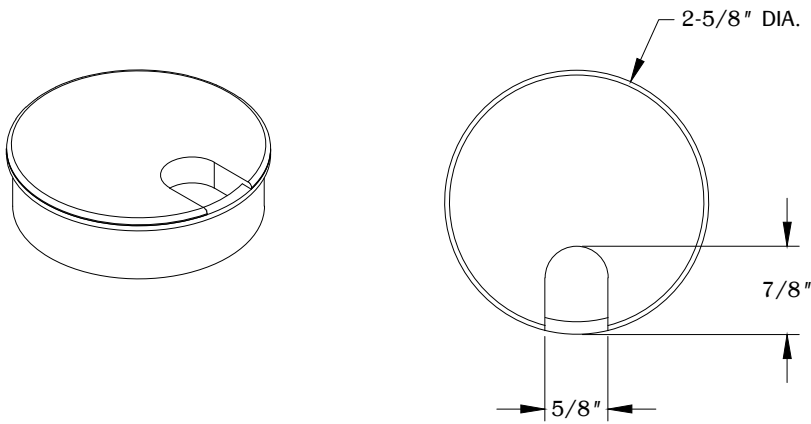
### TABLE OF CONTENTS



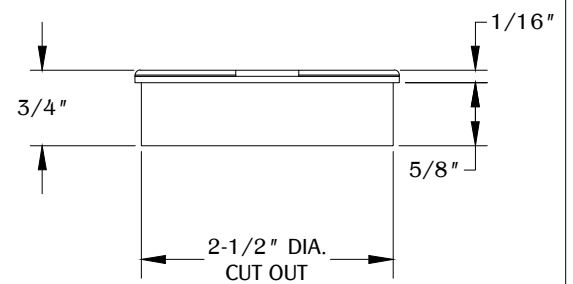
..... 1X MM6A



..... 1X MM6

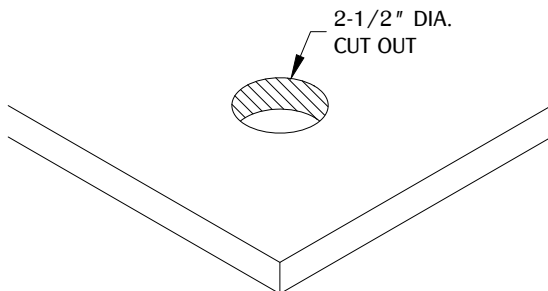


TOP VIEW



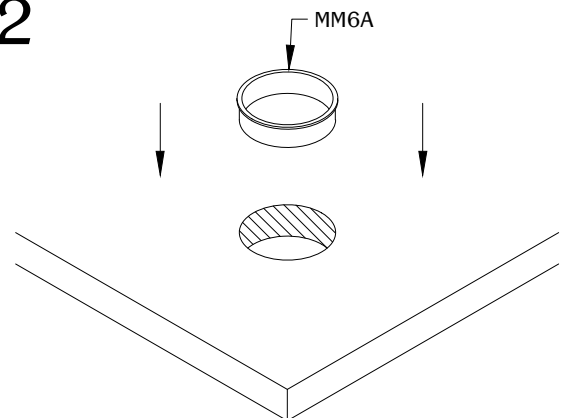
FRONT VIEW

1



Make a cut out in the desired location on your work surface.  
Cut a hole at 2-1/2" diameter.

2



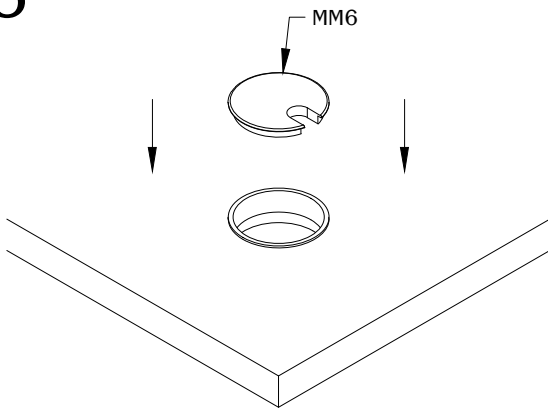
Install the MM6A into the cut out and make sure it is fully leveled onto the work surface.

## MM6/SET

PROPRIETARY AND CONFIDENTIAL.

ALL DIMENSIONS HAVE A  $\pm 1/32"$  TOLERANCE UNLESS OTHERWISE SPECIFIED. WE DO NOT RECOMMEND DRILLING OR CUTTING ANY HOLES BEFORE RECEIVING A PRODUCT OR A PRODUCT SAMPLE.

3



Insert MM6 into the MM6A.