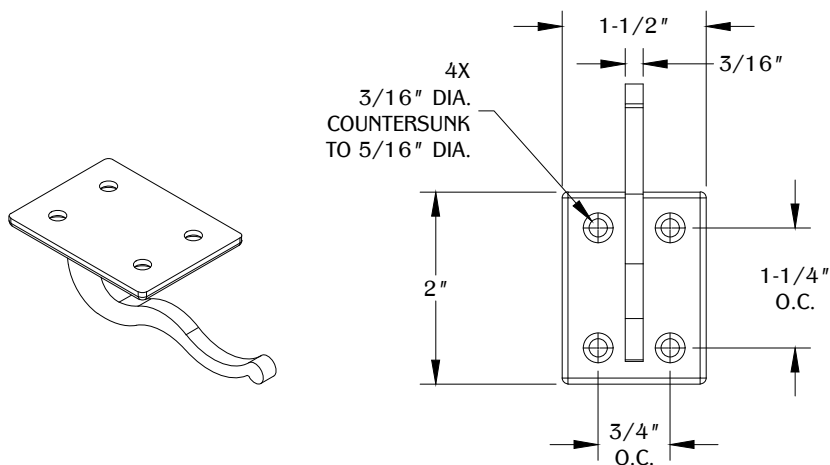


ALL DIMENSIONS HAVE A +/- 1/16" TOLERANCE UNLESS OTHERWISE SPECIFIED. WE DO NOT RECOMMEND DRILLING OR CUTTING ANY HOLES BEFORE RECEIVING A PRODUCT OR A PRODUCT SAMPLE.

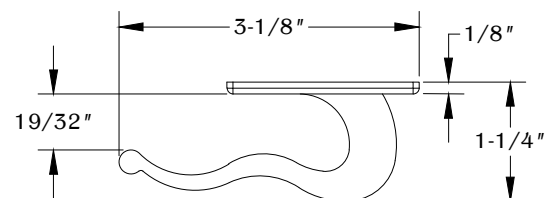
TABLE OF CONTENTS

-
- A diagram of a square plate with four circular holes, one in each corner. A cable is attached to the center of the bottom edge of the plate and extends downwards and to the right.

. 1X HK20

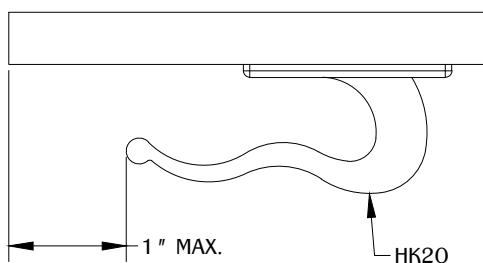


BOTTOM VIEW



SIDE VIEW

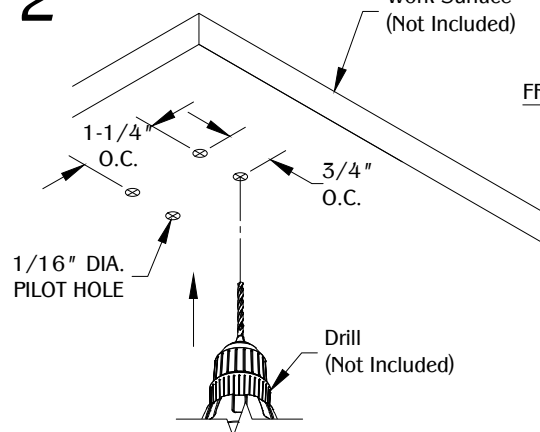
FRONT



Determine the position and location of the part under the work surface. Allow enough clearance for part to function.

Work Surface
(Not Included)

FRONT



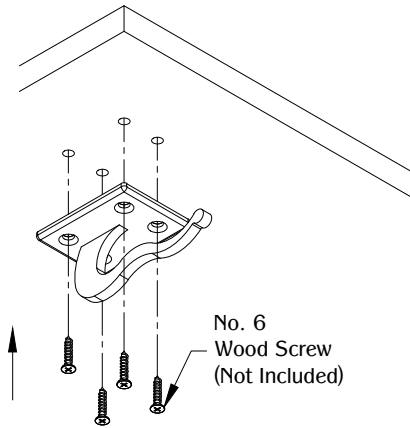
Mark the mounting positions for the mounting hardware and drill (4) 1/16" DIA. pilot holes. (Note: Use appropriate pilot hole depth depending on the thickness of the work surface.)

HK20

PROPRIETARY AND CONFIDENTIAL.

ALL DIMENSIONS HAVE A $\pm 1/16$ " TOLERANCE UNLESS OTHERWISE SPECIFIED. WE DO NOT RECOMMEND DRILLING OR CUTTING ANY HOLES BEFORE RECEIVING A PRODUCT OR A PRODUCT SAMPLE.

3



Align HK20 mounting holes to pilot holes. Use (4) No. 6 wood screws to secure the part under the work surface.
(Note: Use appropriate mounting hardware type and length depending on the material and thickness of the work surface.)