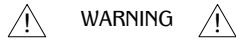


PCS119/UC

PROPRIETARY AND CONFIDENTIAL.

ALL DIMENSIONS HAVE A $\pm 1/16"$ TOLERANCE UNLESS OTHERWISE SPECIFIED. WE DO NOT RECOMMEND DRILLING OR CUTTING ANY HOLES BEFORE RECEIVING A PRODUCT OR A PRODUCT SAMPLE.



WARNING

- For indoor use only.
- For use on a normally dry work surface.
- If any malfunction occurs, do not attempt to disassemble or repair.
- Avoid placing the charger in a high temperature environment or near fire.

SPECIFICATIONS

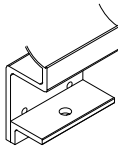
- 6 ft. cord length.
- USB-A and USB-C ports are for charging use only.

MOUNTING BRACKET ORIENTATION OPTIONS

Top Orientation

10.00mm (13/32") MIN.

38.00mm (1-1/2") MAX. table thickness.



Bottom Orientation

13.00mm (1/2") MIN.

59.00mm (2-5/16") MAX. table thickness.

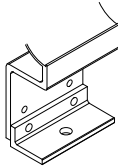
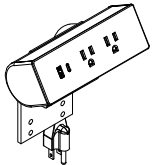


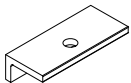
TABLE OF CONTENTS



..... 1X PCS119/UC



..... 1X Metal Insert



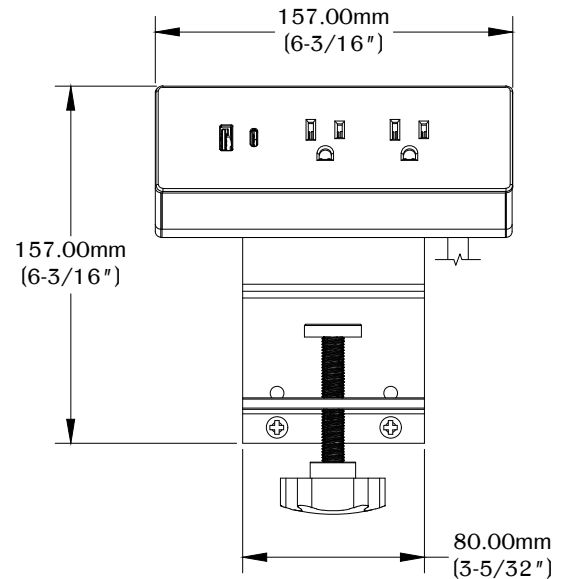
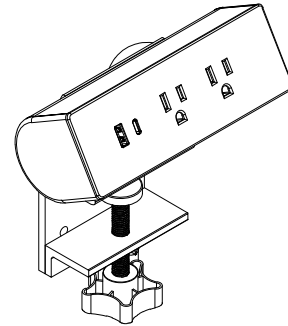
..... 1X Mounting Bracket



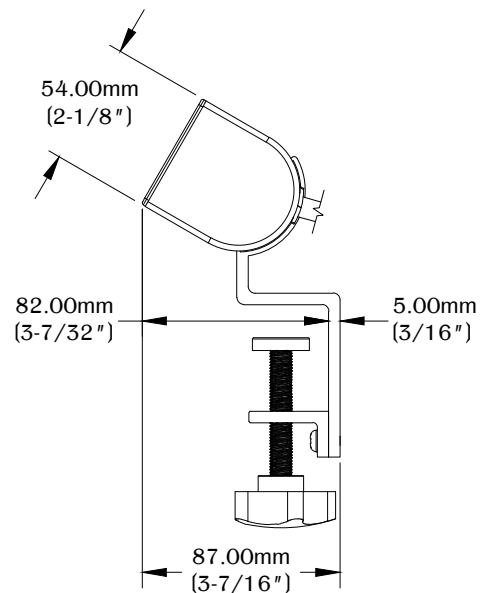
..... 2X
M6 X 1.0 X 10.00mm
Pan Head Screw



..... 1X Thumb Screw



FRONT VIEW



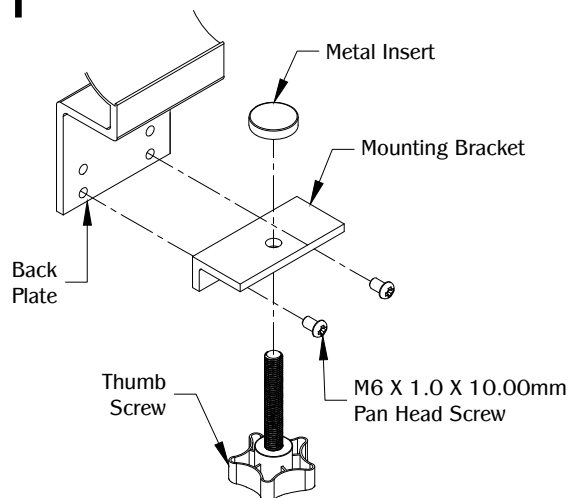
SIDE VIEW

PCS119/UC

PROPRIETARY AND CONFIDENTIAL.

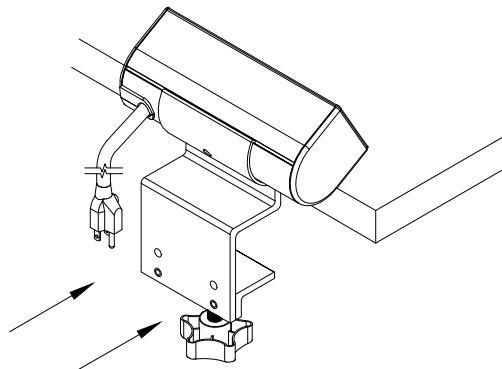
ALL DIMENSIONS HAVE A $\pm 1/16"$ TOLERANCE UNLESS OTHERWISE SPECIFIED. WE DO NOT RECOMMEND DRILLING OR CUTTING ANY HOLES BEFORE RECEIVING A PRODUCT OR A PRODUCT SAMPLE.

1



Determine the table thickness and orientation of the mounting bracket. Use (2) M6 X 1.0 X 10.00mm Pan head screws to secure onto the back plate. Assemble the thumb screw on the mounting bracket and install the metal insert.

2



Loosen the thumb screw on the mounting bracket and slide PCS119/UC on the edge of the work surface. Tighten thumb screw to secure part. Plug the unit into a nearby outlet and unit is ready for use.