

## MM3

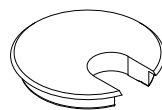
PROPRIETARY AND CONFIDENTIAL.

ALL DIMENSIONS HAVE A  $\pm 1/32"$  TOLERANCE UNLESS OTHERWISE SPECIFIED. WE DO NOT RECOMMEND DRILLING OR CUTTING ANY HOLES BEFORE RECEIVING A PRODUCT OR A PRODUCT SAMPLE.

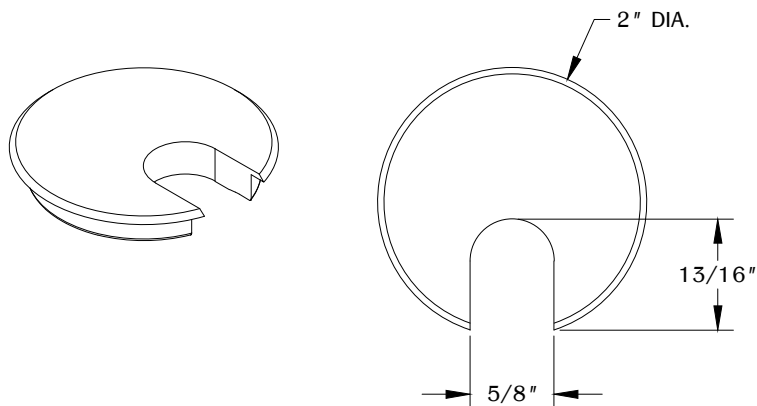
### SPECIFICATIONS

- Maximum cord diameter is  $5/8"$ .

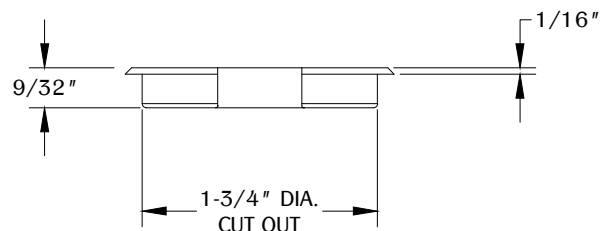
### TABLE OF CONTENTS



..... 1X MM3

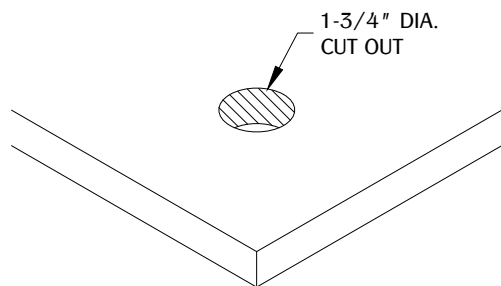


TOP VIEW



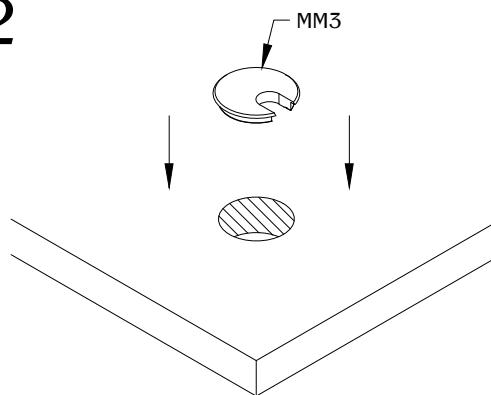
FRONT VIEW

1



Make a cut out in the desired location on your work surface.  
Cut a hole at 1-3/4 inch diameter.

2



Install the MM3 into the cut out and make sure it is fully leveled onto the work surface.