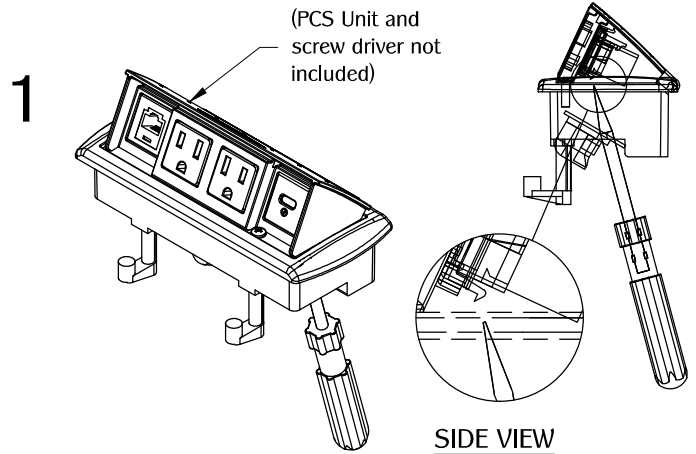
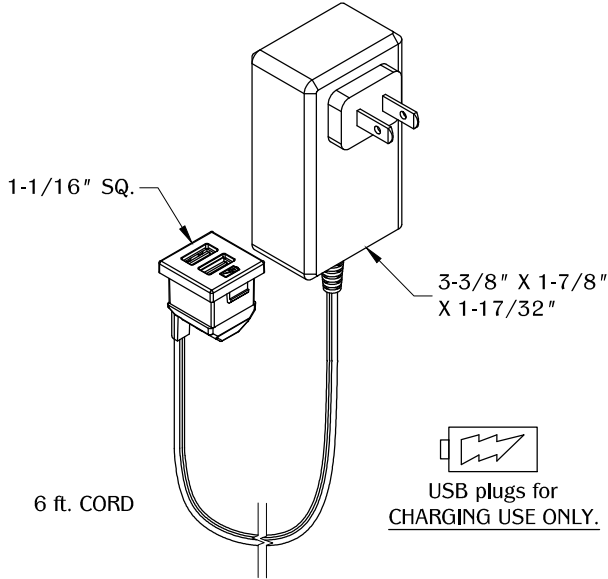


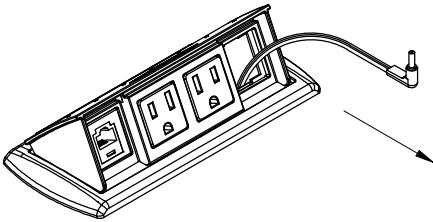
Note: Go to www.mockett.com/usb for a complete list of compatible PCS units.



Note: Power receptacles can not be removed.

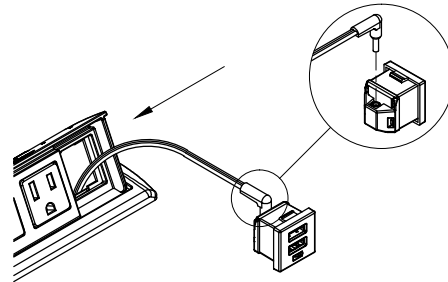
If unit is already loaded, remove one of the data inserts as follows. Otherwise proceed to Step 2. Use a flat head screw driver from the bottom and push the tab to release data insert.

2



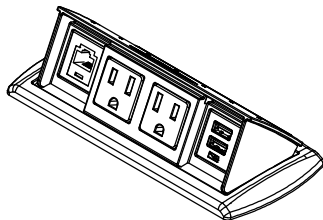
Guide the end of the power adapter that connects to the USB/PWR through the opening.

3



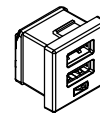
Connect the power plug into the USB/PWR. Snap the assembly back to the PCS unit bezel.

4

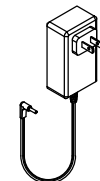


Connect the adapter to an electrical outlet. Do not place unit where cable is strained or trapped.

TABLE OF CONTENTS:



.....USB/PWR



.....1 X 5V/4Amp AC Adapter