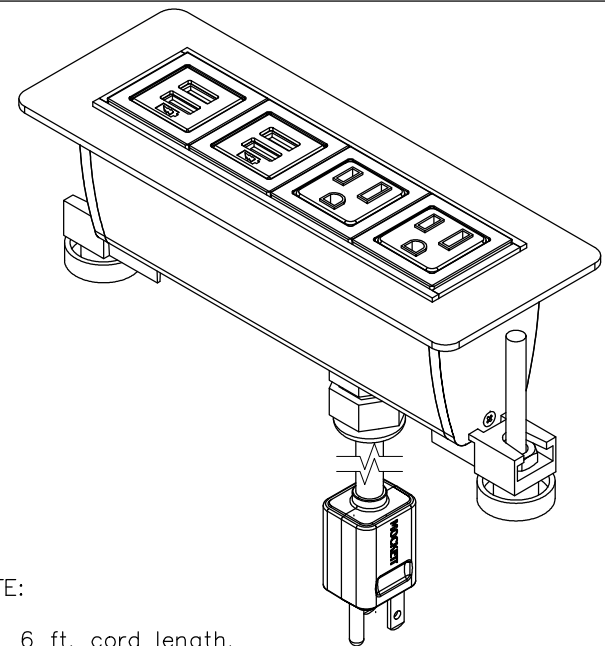
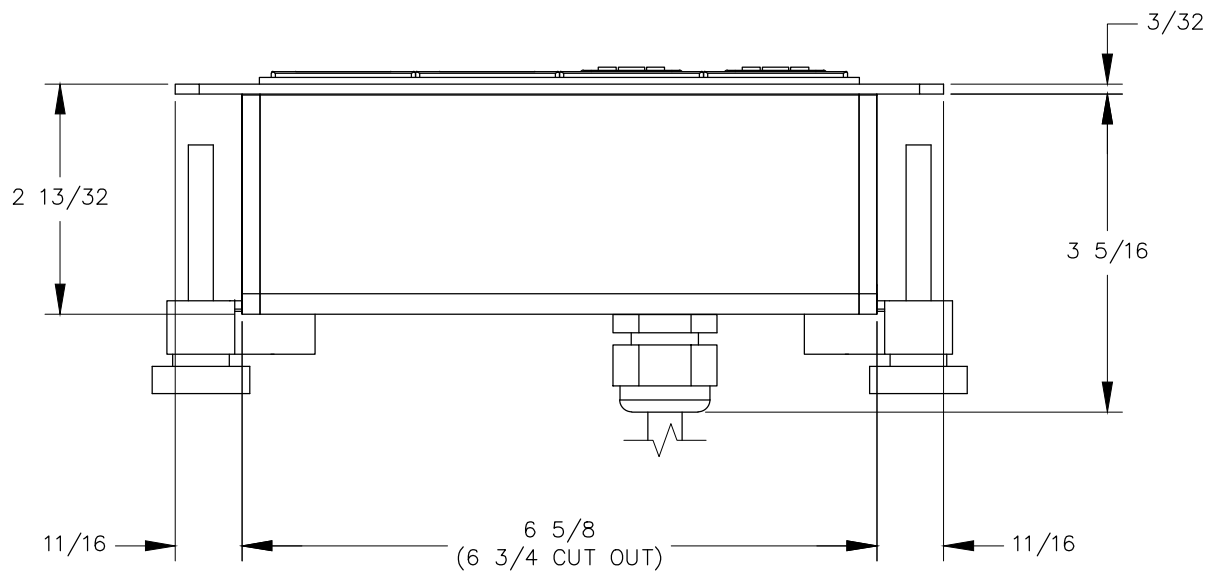


TOP VIEW

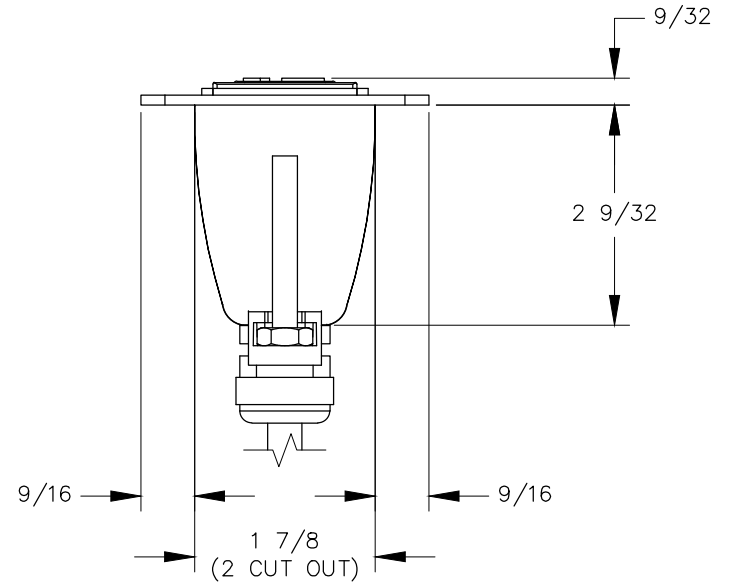


NOTE:

1. 6 ft. cord length.
2. Table thickness is $\frac{3}{4}$ MIN. to $1 \frac{3}{4}$ MAX.
3. USB-A ports are for charging use only.
4. Plug dimension is $1 \frac{11}{32} \times 1 \frac{1}{32} \times \frac{7}{8}$.



FRONT VIEW



RIGHT VIEW