

DP301

PROPRIETARY AND CONFIDENTIAL.

ALL DIMENSIONS HAVE A $\pm 1/16"$ TOLERANCE UNLESS OTHERWISE SPECIFIED. WE DO NOT RECOMMEND DRILLING OR CUTTING ANY HOLES BEFORE RECEIVING A PRODUCT OR A PRODUCT SAMPLE.

SPECIFICATIONS

- Additional mounting screw lengths available upon request.

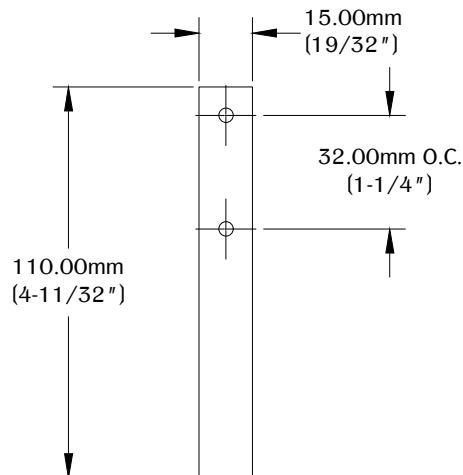
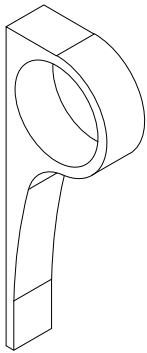
TABLE OF CONTENTS



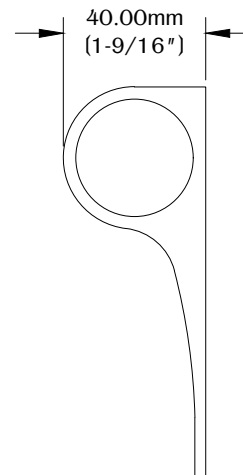
..... 1X DP301



..... 2X $21/32"$
M4 X 0.70 Thread
Mounting Screw

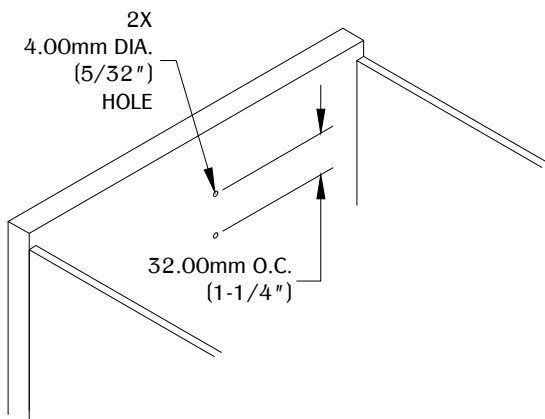


REAR VIEW



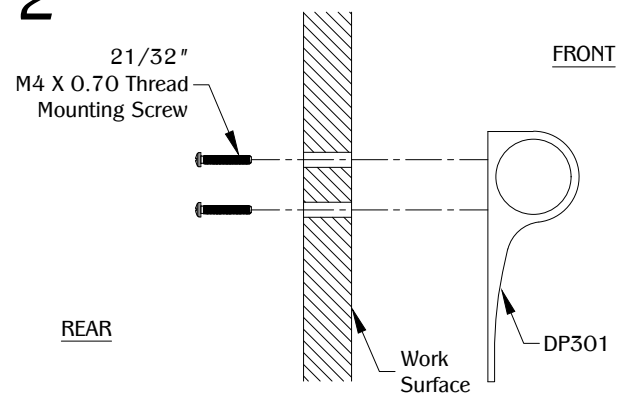
SIDE VIEW

1



Determine the position and location of the part on the work surface. Mark the mounting positions and drill the hole for the mounting hardware.

2



SIDE VIEW

Use (2) $21/32"$ M4 X 0.70 thread mounting screw to secure the part to the work surface. Make sure the part is fully level on the work surface.