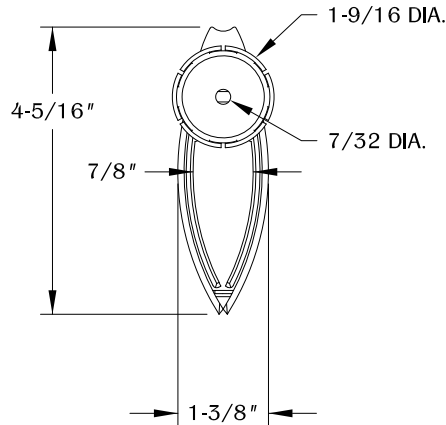
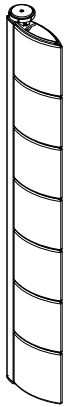


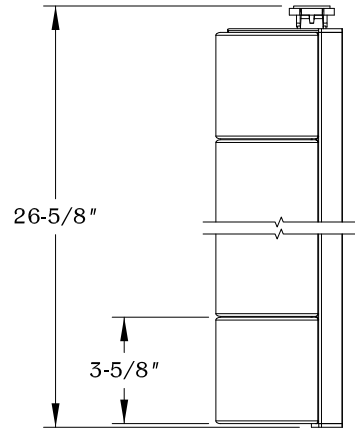
PART #

WM41B

310.318.2491 • 800.523.1269 • www.mockett.com



TOP VIEW



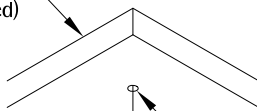
SIDE VIEW

NOTE:

- Minimum clearance required 28" under the work surface.

1

Work Surface
(Not Included)



Pilot Hole Notes:
1/8" DIA. (Wood Screw)
3/16" DIA. (Socket Screw)

Mounting Ring

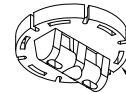
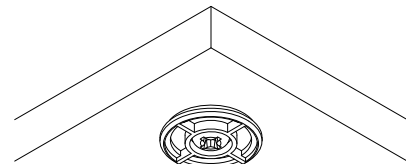
OR

Socket Screw

Wood Screw

Determine the position and location of the wire manager underneath the work surface. Mark and drill pilot hole (See pilot hole notes). Secure the mounting ring to the work surface using either the included wood screw or socket screw.

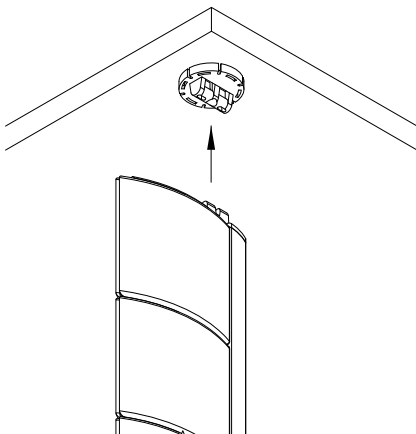
2



Mounting Cap

Align and attach mounting cap to mounting ring.
(Note: Press cap onto mounting ring until it snaps into place.)

3



Align and attach the wire manager to the mounting cap.

TABLE OF CONTENTS:



..... 1X WM41B



..... 1X Mounting Ring



..... 1X Mounting Cap



..... 1X 1/2" #10 Pan-Head Wood Screw



..... 1X 1/16" M6 - 1.0 Thread Socket Screw