



Installation Methods: Monolithic, Quarter Turn

Product Specifications

Construction	Patterned Scroll
Backing	Nexus® Modular
Dye Method	Solution Dyed
Fiber Type	Encore® SD Ultima® (with recycled content)
Face Weight	15 oz./sy (509 grams/m2)
Pile Density	6585 oz./y3 (244.18 kg/m3)
Pattern Repeat	N/A
Gauge	1/12 (4.72 rows/cm)
Stitches Per Inch	10 stitches/in (3.94 stitches/cm)
Standard Size	24" x 24" approx. (60.96cm x 60.96cm)
Standard Adhesive	Commercialon Premium Modular and LVT Adhesive
Standard Warranties	Nexus Modular Commercialon Adhesive for Modular Carpet & LVT Nexus FC Cushion Encore SD Ultima Fiber
Optional Warranties	Commercialon High Moisture Adhesive for Modular Carpet and LVT

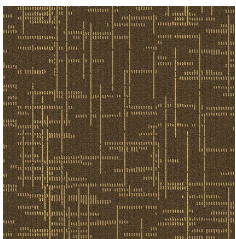
Special Technologies

ProSept® Antimicrobial	Optional
ProTex® Soil Release	Standard
Sentir® Odor-Blocker	Optional

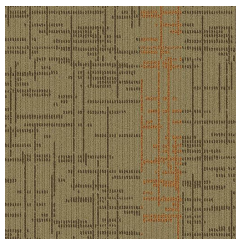
Environmental Specifications & Tests

NSF 140:	Gold Certified
Total Recycled Content	48.75%
Flooring Radiant Panel	Class 1
Smoke Density	Less then 450 flaming (ASTM E 662)
Static Test	Less then 3 kv (AATCC-134)
ADA Compliance	Compliant For Accessible Routes
Pill Test	Yes
Lightfastness	Yes

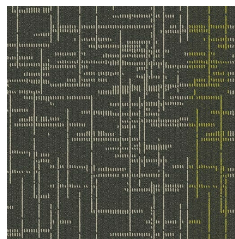
Colorways



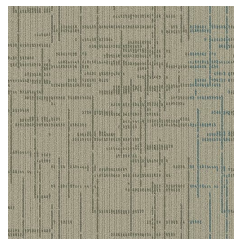
CTL16 Paste



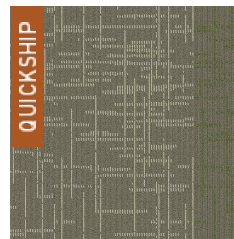
CTL35 Backspace



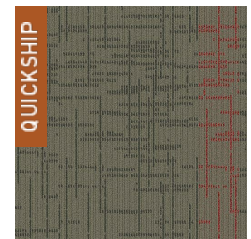
CTL46 Right-click



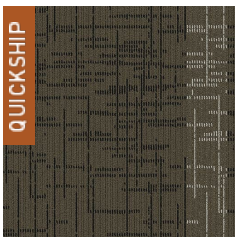
CTL52 Cut



CTL54 Alt



CTL55 Tab



CTL57 Command