



A WATTS Brand

S19214 Series

European and Australian Pedestal-Mount Halo™ Eyewash or Eye/Face Wash

- Halo™ Delivers the Most Effective Eye/Face Washdown Coverage and Spray Pattern
- Exceeds Australia/New Zealand AS4775 & AS/NZS 4020
- Industry's Only Self-Draining Design – The Aquaduct™
- Separate Supply and Waste Pipes – Meets CEN and Plumbing Requirements
- Ergonomic Hand Activation Eyewash Paddle – Easy to Reach from Any Direction
- Barrier Free
- Fully-Assembled and Factory-Tested Eyewash or Eye/Face Wash with Hinged Dust Covers
- Yellow Transparent Plastic and Stainless Steel Bowl Covers Available
- Universal Identification Sign and Inspection Tag Included
- Certified by IAPMO OCEANA to AS4775 and AS/NZS 4020
- Halo™ is Covered by One or More of the Following Patents: 9,700,484; 9,314,398; D662220; D673298; D662605; D685920; D662219; and D671228. Other Patents Pending.

Specifications

Standard Eyewash or Eye/Face Wash Units save space and fit easily into any work environment. Halo eyewash or eye/face wash, operated by an ergonomic, highly visible push handle, provides effective wash down coverage and spray pattern. Integral strainer reduces debris in the water and also prevents clogging.



This plumbing fixture is not intended to dispense water for human consumption through drinking or for preparation of food or beverages.

Pipe and Fittings

Piping to 1/2" BSPP water supply inlet on unit. Piping to 1-1/4" BSPP drain outlet for eyewash. 1-1/4" piping assembly manufactured of one of the following materials:

- Type 304 corrosion resistant stainless steel
- Type 316 corrosion-resistant stainless steel

Ball Valve

1/2" stay-open eye and eye/face wash valve manufactured of the following materials:

- Type 316 stainless steel

Eyewash

The Halo eyewash system offers a high performance rinsing platform that provides rapid relief to an individual's eyes that have been injured by chemicals or particulate. The eyewash includes an integral 5.1 GPM (19.2 L) flow control, providing water at a safe velocity while maintaining its effectiveness (exceeds minimum water flow of 0.4 GPM (1.5 L) at 30 PSI (2.0 bar)). Eyewash is protected by flip open dust covers that open when product is activated or by a full bowl dust cover that activates the unit when it is opened. Safe, steady water flow under varying water supply conditions from 30–90 PSI (2.0–6.1 bar) is assured by integral flow control in the sprayhead assembly. Sprayheads are made from an impact resistant ABS plastic.



Eye/Face Wash

The Halo eye/face wash system offers a high performance rinsing platform that provides rapid relief to an individual's eyes and face that have been injured by chemicals or particulate. This system provides the most complete face wash available in the market. The eye/face wash includes an integral 5.1 GPM (19.2 L) flow control, providing water at a safe velocity while maintaining its effectiveness (exceeds minimum water flow of 3.0 GPM (11.4 L) at 30 PSI (2.0 bar)). Eye/face wash is protected by flip open dust covers that open when product is activated or by a full bowl dust cover that activates the unit when it is opened. Safe, steady water flow under varying water supply conditions from 30–90 PSI (2.0–6.1 bar) is assured by integral flow control in the sprayhead assembly. Sprayheads are made from an impact resistant ABS plastic, or from durable Type 304 stainless steel with electro-polished finish.

Bowl and Dust Cover

Bowl is constructed of yellow impact-resistant plastic or Type 304 corrosion-resistant stainless steel. Optional dust cover is constructed of transparent yellow impact-resistant plastic or Type 304 corrosion-resistant stainless steel.

Activation

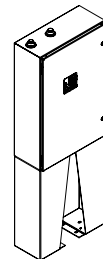
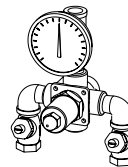
Type 304 Stainless steel push handle with Type 304 stainless steel foot pedal.

Tepid Water Options

[Navigator S19-2000 EFX8](#)
[Emergency Thermostatic Mixing Valve](#)

[Keltech CLE-Series](#)
[Tankless Water Heater](#)

NAVIGATOR



Satisfies ANSI/ISEA Z358.1 tepid water requirements.



European and Australian Pedestal-Mount Halo™ Eyewash or Eye/Face Wash

S19214 Series

Halo Pre-Configured Models

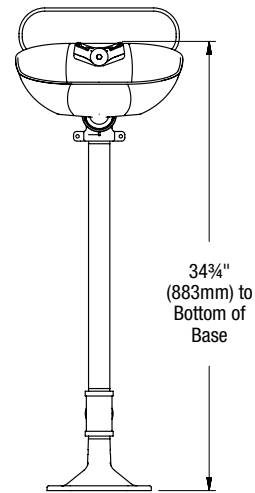
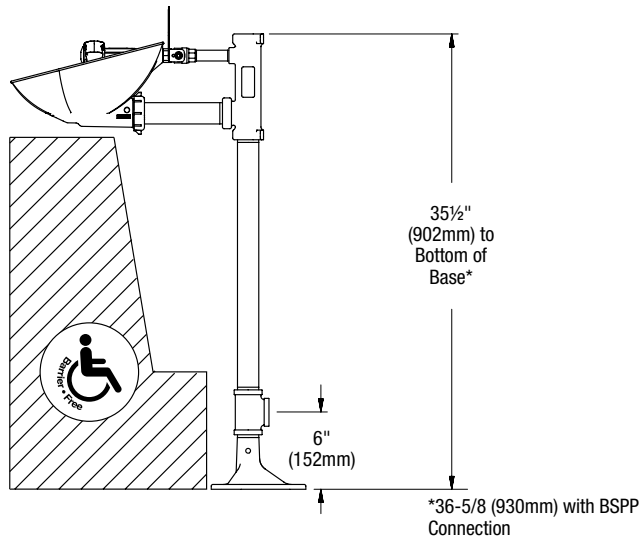
☒ All models with AS4775 & AS/NZS 4020 Certification include BSPP threading.

Halo Model Number	Description	IAPMO Oceana certified to AS4775 & AS4020
Eyewashes		
S19214EWZ	Halo Eyewash, plastic bowl	
S19214EWZS	Halo Eyewash, plastic bowl, stainless steel piping	X
S19214BZ	Halo Eyewash, stainless steel bowl	
S19214BZS	Halo Eyewash, stainless steel bowl, stainless steel piping	X
Eyewashes with Dust Cover		
S19214PDCZ	Halo Eyewash, plastic bowl w/ dust cover	
S19214PDCZS	Halo Eyewash, plastic bowl w/ dust cover, stainless steel piping	X
S19214DCZ	Halo Eyewash, stainless steel bowl & hinged dust cover	
S19214DCZS	Halo Eyewash, stainless steel bowl & hinged dust cover, stainless steel piping	X
Eye-Face Washes		
S19214FWZ	Halo Eye/face wash, plastic bowl	
S19214FWZS	Halo Eye/face wash, plastic bowl, stainless steel piping	X
S19214YZ	Halo Eye/face wash, stainless steel bowl	
S19214YZS	Halo Eye/face wash, stainless steel bowl, stainless steel piping	X
S19214YFZ	Halo Eye/face wash, stainless steel bowl, hand/foot operated	
S19214YFZS	Halo Eye/face wash, stainless steel bowl, hand/foot operated, stainless steel piping	X
S19214PZ	Halo Eye/face wash, stainless steel bowl with drench hose	
Eye-Face Washes with Dust Cover		
S19214PDCFWZ	Halo Eye/face wash, plastic bowl w/ hinged dust cover	
S19214PDCFWZS	Halo Eye/face wash, plastic bowl w/ hinged dust cover, stainless steel piping	X
S19214DCFWZ	Halo Eye/face wash, stainless steel bowl & hinged dust cover	
S19214DCFWZS	Halo Eye/face wash, stainless steel bowl & hinged dust cover, stainless steel piping	X
All Stainless Steel Eye/Face Wash		
S19214BSSZ	Halo stainless steel eye/face wash and bowl	X
S19214SCZ	Halo stainless steel eye/face wash, bowl and cover	X
S19214SSZ	Halo stainless steel eye/face wash and bowl with foot activation	X

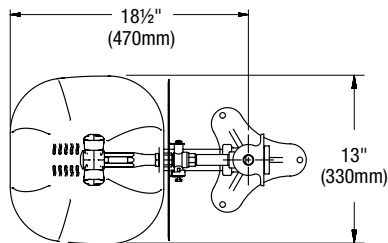


European and Australian Pedestal-Mount Halo™ Eyewash or Eye/Face Wash

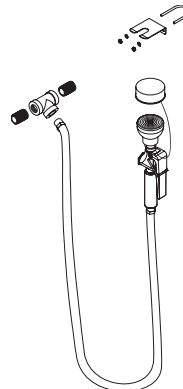
S19214 shown with Eyewash and Plastic Bowl



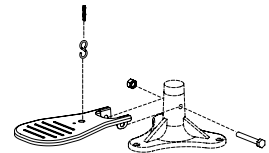
Eyewash Bowl



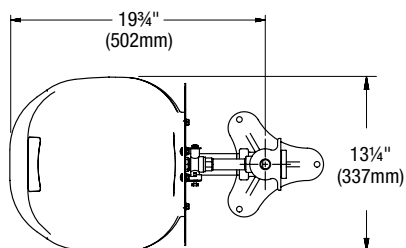
S19-430EH Drench Hose



Foot Pedal Activation



Dust Cover



All dimensions assume standard thread engagement. Variations in manufacturing allow for +/- 1/8" (3mm) per threaded joint. To find the tolerance of a dimension, add the number of thread joints across the length of the dimension and multiply it by 1/8" (3mm).