

Mile Marker

Building blocks

Table of contents

Hinge location and style	3
Waste rings	3
Removable drawer liners	4
Shelves and Interior options	4
Cabinet finishes	5
Laminate worksurface finishes	6-8
Solid Surface worksurface finishes	9-10
Pull options and finishes	11
Lock options and finishes	12
Base cabinets	13-14
Wall hanging cabinets	15-16
Sink cabinets - Base	17
Sink cabinets - Wall hanging	18
Worksurfaces	19
Worksurface supports	20
Faucets and Sinks	21
Upper cabinets	22-23
Upper storage cabinets	23
Storage and Locker cabinets	24-25
Storage and Locker cabinets - Power	26
Server, Media, and Bedside cabinets	27-28
Toe kick rails	30
Fillers	29-30
Wall panels	31
Lighting	31
Bench cabinets	32
Dividers and Privacy panels	33
Equipment rail and attachments	34-35

Hinge location and style

- Single door cabinets require a left or right hinge specification.
- Single and double door cabinets require hinge style.

Hinge style



Euro Soft Close
B3G

Waste rings

- Cabinet waste ring is available on the front of single cabinets at least 24" tall.
- Cabinet waste ring is available in four finishes - see options below.
- Work surface waste rings are available on all straight laminate and solid surface tops.
- Work surface integral waste ring is only an option on solid surface tops.
- Cabinet waste ring grommet is 8.5" wide and 4.5" tall. Opening itself is 8" wide and 4" tall. The grommet will be 3" from the top of the cabinet.
- Work surface waste ring has a 6" diameter.

Waste ring options



Cabinet waste ring
WGR1



Work surface waste ring - black
B5U



Work surface waste ring - silver
B5V



Work surface waste ring - integral
B5T

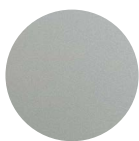
WGR1 Finishes



Bone White
BWT



Chalk
CHLK



Luster Grey
MSL



Onyx
BKO

Removable drawer liners

- Removable drawer liners are available for all drawers. Drawer liners provide protection for drawer interiors and easy cleanability of the drawer interior.
- Drawer liners vary in size to meet drawer dimensions.

Drawer liners



One / Two / Three / Four drawer liners
Q4 / Q5 / Q6 / B3F

Shelves and Interior options

- For base and upper cabinets, cabinets come standard with no shelves. There are optional fixed or adjustable shelves that can be specified.
- For locker cabinets, cabinets come standard with no shelves. For storage cabinets, cabinets come standard with one fixed shelf in the lower portion. There are optional fixed or adjustable shelves you can add as well as other interior options.

Shelf options



Base cabinet
1 shelf fixed/adjustable
B3N / R8



Upper cabinet - 24" or 30" high
1 shelf fixed/adjustable
B3N / R8



Upper cabinet - 36" high
2 shelves fixed/adjustable
B3N / R8



Upper cabinet - 24", 30", and 36" high
Appliance shelf
B4Y

Storage Interior Options



3 shelves fixed/adjustable
B3N / R8



Coat Hooks
A4S



Hanging Bar (24" deep models only)
R7



Wardrobe Rail (24" wide models only)
B3P

Cabinet laminate finishes

- Chassis, doors, drawers, and edges

Wood grain laminates



Blonde
BE2, BE3



Burnished
BU2, BU3



Desert
DS2, DS3



Honey
MH2



Kodiak
KD2, KD3



Linen
CO2, CO3



Ochre
LM2, LM3



Pecan
PC2, PC3



Root
NW2, NW3



Sienna
LC2, LC3



Steel
ST2, ST3



Toffee
EN2

Textured laminates

* 10% upcharge



Char *
CR2



Drift
DR2



Finn
FN2



Loft
LO2



Peak
PK2

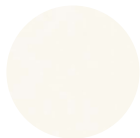


Saddle *
SD2

Solid laminates



Black
BL2, BL3



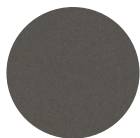
Frosty White
FW2, FW3



Grey
GR2, GR3



Pure White
RW2, RW3



Slate Grey
SG2

- All drawers and edges are made with TFL.
- All chassis and doors are made with TFL except for door fronts with glove box cutouts, and chassis with glove box cutouts. These are made with 3DL.
- Finishes ending in a 2 are TFL. Finishes ending in a 3 are 3DL. Some of our standard laminates do not have a 3DL option.

Worksurface laminate finishes

• Worksurfaces

Wood grain laminates



**Blonde
BEP**



**Burnished
BUP**



**Desert
DSP**



**Honey
HNP**



**Kodiak
KDP**



**Linen
COP**



**Ochre
TMP**



**Pecan
PCP**



**Root
NWP**



**Sienna
CHP**



**Steel
STP**



**Toffee
MEP**

Textured laminates



**Char +
CRP**



**Drift
DRP**



**Finn
FNP**



**Loft
LOP**



**Peak
PKP**



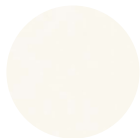
**Saddle +
SDP**

+ Studio textured laminates have a 10% upcharge

Solid laminates



**Black
BLP**



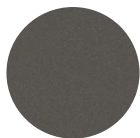
**Frosty White
FWP**



**Grey
GRP**



**Pure White
RWP**



**Slate Grey
SGP**

- All laminate worksurfaces are HPL.
- [Wilsonart -60 and -38 matte texture standard grade HPLs are available at standard list prices.](#) Lead times may be extended depending on supplier's availability. Other laminates can be ordered at an upcharge with extended lead times. Please contact your representative for a price quotation and availability.

Worksurface laminate finishes

• Worksurfaces

10734-60 Limber Maple
10745-60 Fonthill Pear
10776-60 Kensington Maple
1500-60 Grey
1503-60 Putty
1530-60 Beige
1531-60 Light Beige
1570-60 White
1572-60 Antique White
1573-60 Frosty White
1595-60 Black
1763-60 Brune Slate
1787-60 Oxide
2932-60 Almond Leather
4142-60 Grey Glace
4143-60 Neutral Glace
4166-60 Pampas
4168-60 Grey Pampas
4170-60 Beige Pampas
4207-60 Fresco
4608-60 Caldera Beige
4621-60 White Nebula
4622-60 Grey Nebula
4623-60 Graphite Nebula
4630-60 Cloud Nebula
4633-60 Natural Nebula
4651-60 Navy Legacy
4654-60 Olive Legacy
4656-60 Bronze Legacy
4663-60 Tawny Legacy
4667-60 Green Tigris
4669-60 Natural Tigris
4673-60 Saffron Tigris
4674-60 Evening Tigris
4744-60 Karratha Brush
4745-60 Maroochy Brush
4746-60 Woolamai Brush
4757-60 Mystique Moonlight
4759-60 Mystique Marine
4760-60 Mystique Night
4761-60 Mystique Mount
4762-60 Mystique Dawn
4779-60 Pewter Brush
4783-60 White Tigris
4793-60 Windswept
4794-60 Windswept Bronze
4795-60 Windswept Pewter
4796-60 Burnished Chestnut
4798-60 Burnished Ember
4810-60 Titanium EV
4811-60 Silicon EV
4813-60 Nickel EV
4814-60 Tungsten EV
4820-60 Carbon EV
4823-60 Antique Brush
4835-38 Tumbled Roca
4836-38 Villa Roca
4837-38 Terra Roca
4838-38 Antique Roca
4841-60 Desert Zephyr

4842-60 Canyon Zephyr
4843-60 Misted Zephyr
4844-60 Loden Zephyr
4845-60 Twilight Zephyr
4846-60 Morro Zephyr
4848-38 Mission Sage
4853-38 Mission Stone
4854-38 Mission Glaze
4856-60 Cloud Zephyr
4857-60 Shadow Zephyr
4859-60 Spiced Zephyr
4869-60 Western White
4871-60 Western Suede
4872-60 Western Storm
4873-60 Western Bronze
4874-60 Western Hills
4876-38 Sheer Mesh
4877-38 Grey Mesh
4878-38 Pewter Mesh
4879-38 Steel Mesh
4880-38 Carbon Mesh
4882-38 Oiled Soapstone
4883-38 Sable Soapstone
4884-38 Flame Soapstone
4885-38 Green Soapstone
4886-38 Pearl Soapstone
4887-38 Tan Soapstone
4888-38 Rustic Slate
4893-60 Tumbled Mosaic
4902-38 Mercury Glass
4903-38 Antique Glass
4904-38 Desert Springs
4905-38 Spicewood Springs
4906-38 Willow Springs
4907-38 Deep Springs
4908-60 White Tea
4909-60 Ginseng Tea
4910-60 Chai Tea
4911-38 Soft Gold Mesh
4912-38 Gilded Mesh
4913-60 Eggplant
4914-60 Pomegranate
4915-60 Tangerine
4916-60 Sweet Corn
4917-60 Kiwi
4918-60 Sprout
4919-60 Blue Agave
4924-38 White Carrara
4927-38 Crema Marfil
4928-38 Venetian Ivory
4929-38 Bordeaux Juparana
4930-38 Venetian Ale
4931-38 White Juparana
4932-38 Golden Juparana
7054-60 Wild Cherry
7061-60 Natural Pear
7806-60 Bannister Oak
7816-60 Solar Oak
7850-60 Beigewood
7909-60 Fusion Maple

7911-60 Manitoba Maple
7921-38 Tuscan Walnut
7925-38 Monticello Maple
7928-38 Castle Oak
7929-38 Huntington Maple
7937-38 River Cherry
7938-38 New Age Oak
7946-38 Brazilwood
7953-38 Harvest Maple
7954-38 Natural Rift
7955-38 Chardonnay
D14-60 Port
D25-60 Atlantis
D30-60 Natural Almond
D307-60 Hollyberry
D315-60 Platinum
D321-60 Brittany Blue
D327-60 Pepperdust
D331-60 Sand
D354-60 Designer White
D379-60 Indigo
D381-60 Fashion Grey
D403-60 White Sand
D417-60 Lapis Blue
D431-60 Alabaster
D456-60 Café Crème
D478-60 Amazon
D495-60 Coffee Bean
D50-60 Khaki Brown
D79-60 Hunter Green
D90-60 North Sea
D91-60 Slate Grey
D92-60 Dove Grey
D96-60 Shadow
D97-60 Haze

**THE FOLLOWING WILSONART
STANDARD PATTERN HPL'S
ARE AVAILABLE AT STANDARD
LIST PRICES WITH EXTENDED
LEAD TIMES.**

1572-38 Antique White
1573-38 Frosty White
1755-60 Canyon Black
4550-60 Granite
4551-60 Blackstar Granite
4552-60 Ebony Star
4595-60 Bahia Granite
4724-60 Milano Amber
4725-60 Milano Brown
4726-60 Milano Quartz
4728-60 Milano Mahogany
4781-60 Sunstone
4835-60 Tumbled Roca
4836-60 Villa Roca
4837-60 Terra Roca
4838-60 Antique Roca
4860-38 Silver Alchemy
4861-38 Gold Alchemy

4889-60 Milano Baltic
4890-60 Milano Blaze
4891-60 Milano Rosso
4892-60 Polished Mosaic
4899-38 Frosted Glass
4900-38 Sea Glass
4901-38 Bottle Glass
4943-38 Classic Linen
4944-38 Casual Linen
4989-38 Rugged Linen
4990-38 Flax Linen
4991-38 Pressed Linen
4991-38 Sterling Ash
7039-38 Windsor Mahogany
7039-60 Windsor Mahogany
7040-60 Figured Mahogany
7054-38 Wild Cherry
7110-60 Montana Walnut
7122-38 Empire Mahogany
7122-60 Empire Mahogany
7209-60 Nepal Teak
7885-60 English Oak
7919-38 Amber Cherry
7919-60 Amber Cherry
7921-60 Tuscan Walnut
7922-38 Brighton Walnut
7922-60 Brighton Walnut
7923-60 Versailles Anigre
7924-38 Biltmore Cherry
7924-60 Biltmore Cherry
7925-60 Monticello Maple
7928-60 Castle Oak
7929-60 Huntington Maple
7933-60 Cafelle
7935-60 Shaker Cherry
7936-60 Williamsburg Cherry
7937-60 River Cherry
7938-60 New Age Oak
7939-38 Blond Echo
7941-38 Tan Echo
7942-38 Cocobala
7943-38 Colombian Walnut
7944-38 Madagascar
7945-38 Xanadu
7947-38 Rio
7948-38 Mambo
7949-38 Asian Night
7951-38 Asian Sun
7952-38 Asian Sand
7956-38 Honduran Mahogany
7957-38 Zanzibar
7958-38 Kenya Mahogany
7959-38 Hampton Walnut
7960-38 Studio Teak
7961-38 Yarrow
7962-38 Aloe
D12-60 Regimental Red
D26-60 Persian Blue
D73-60 Pewter
D315-38 Platinum

Worksurface laminate finishes

• Edges

Wood grain laminates



Blonde
BE2



Burnished
BU2



Desert
DS2



Honey
MH2



Kodiak
KD2



Linen
CO2



Ochre
LM2



Pecan
PC2



Root
NW2



Sienna
LC2



Steel
ST2



Toffee
EN2

Textured laminates



Char +
CR2



Drift
DR2



Finn
FN2



Loft
LO2



Peak
PK2



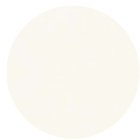
Saddle +
SD2

+ Studio textured laminates have a 10% upcharge

Solid laminates



Black
BL2



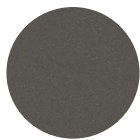
Frosty White
FW2



Grey
GR2



Pure White
RW2



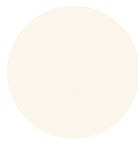
Slate Grey
SG2

- All edges are constructed with TFL.
- Only finishes on this page are available at standard list price and standard lead times even if a [Wilsonart laminate](#) is specified for the worksurface finish.

Worksurface solid surface finishes

• Worksurfaces

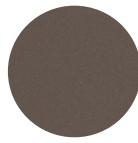
Standard Corians



Cameo White
CWS | Tier 1



Polaris
PLRS | Tier 2



Medea
MDEA | Tier 1



Modern White
MWS | Tier 2

Graded in Solid Surface finishes

CORIAN®

Tier 1

Abalon
Bisque
Bone
Cameo White
Glacier White
Linen
Maui
Sahara
Sandstone
Silver Gray
Vanilla

Tier 2

Antarctica
Archeologic
Artista Beige
Artista Canvas
Artista Dust
Artista Gray
Aurora
Blue Pebble
Canyon
Cocoa Brown
Designer White
Excavage
Modern White
Pebble Lane
Savannah
Stonique
Stratus
Summit White
Elegant Gray
Everest
Pearl Gray
Platinum
Seagrass
Silt
Sparkling White

Tier 5

Arctic Ice
Canvas
Concrete
Cottage Lane
Deep Black Quartz

Tier 5 continued

Deep Caviar
Deep Night Sky
Bleached Nuwood
Dove
Fossil
Granola
Hot
Laguna
Laguna Terrazo
Peppered Terrazzo
Provence Nuwood
Pine
Raffia
Rice Paper
Royal Red
Seafoam
Serene Sage
Sparkling Granita
Suede
Venaro White
Verdant
Whisper
White Jasmine

Tier 6

Arrowroot
Ash Concrete
Beech Nuwood
Carbon Concrete
Clam Shell
Cool Gray
Cosmos Prima
Deep Anthracite
Deep Bedrock
Deep Cloud
Deep Espresso
Deep Mink
Deep Nocturne
Deep Sable
Deep Space
Dee Storm
Deep Titanium
Doeskin
Glacier Ice
Golden Onyx
Gray Onyx
Hazelnut

Tier 6 continued

Jade Onyx
Keystone
Lava Rock
Limestone Prima
Mahogany Nuwood
Matterhorn
Natural Gray
Neutral Concrete
Rain Cloud
Riverbed
Rosemary
Saffron
Sandalwood
Speia Linear
Silver Birch
Silver Linear
Silverite
Sorrel
Tumbleweed
Weathered Concrete
Whipped Cream
Willow
Witch Hazel

Tier 7

Ash Aggregate
Basalt Terrazzo
Burled Beach
Carbon Aggregate
Cirrus White
Cocoa Prima
Domino Terrazzo
Dune Prima
Ecru
Elderberry
Evening Prima
Graylite
Juniper
Milky Way
Mineral
Neutral Aggregate
Nimbus Prima
Pebble Terrazzo
Sagebrush
Sand Storm
Smoke Drift Prima
Sonora

Tier 7 continued

Weathered Aggregate
White Onyx
Windswept Prima
Carrara Crema
Carrara Lino

LIVINGSTONE®

Tier 1

Arroyo
Bechamel
Blue Lagoon
Brisk
Carbonite
Chocolate Chip
Clay
Desert
Dune
Flax
Fleece
Frappe
Graphite
Ice Cap
Key West
Medea
Mesa
Milky Way
Monsoon
Parchment
Pebble Beach
Sable
Sailcloth
Sand Castle
Santa Fe
Sedona
Snow White
Snowfall
Starry Night
Tundra
Wild Pearl

Tier 2

Ambrosia
Appalacian
Ariston
Brushed Clay

Chestnut
Crystal Ice
Dogwood
Elysian

Tier 2 continued

Kona
Meridian
Morocco
Opus
Polaris
Volcanic Ash

Tier 3

Arapahoe
Avalanche
Basalt Ash
Caldera
Caledonia
Canyon Creek
Carrara Rinato
Cloud Burst
Coral Quartz
Dakota
Dapple
Eclipse
Fossil Creek
Mink
Moon Rock
Polar Dawn
Rain Dance
Rock Salt
Rolling Sage
Sage Brush
Salt Flats
Sand Dollar
Sea Pearl
Shoreline
Silver Drift
Thunder Cloud
Torrent
Umbr
Venus
Yukon

• Standard Corians are available across the OFS and Carolina portfolio.

• Graded in solid surface finishes are available at their priced tiers on Mile Marker worksurfaces. Lead times may be extended depending on supplier's availability.

Worksurface solid surface finishes

• Worksurfaces

Graded in Solid Surface finishes	FORMICA®				
	Tier 1	Tier 3 continued	HI-MACS®	Tier 3 continued	Tier 4 continued
	Almondine	Copper Quartz	Tier 1	Frostine	Pavao
	Arctic	Crema terrazzo	Almond	Geyser	Pisa
	Biscuit Spex	Crème Graniti	Almond Pearl	Glacial Glitz	Pluto
	Black Matrix	Dalmata Terrazzo Matrix	Alpine White	Gray (Bright Gray)	Saturn
	Bleached Concrete	Deep blue ice	Arctic White	Gray Granite	Shadow Queen
	Brite White	E café	Annato Granite	Harmony	Shasta
	Chamois Spex	E earthen	Cream	Haze	Strato Cloud
	Copper Matrix	E fog	Ghost White	Honeysuckle	Strato Sand
	Cotta Spex	E natural	Ivory White	Kamet	Strato Wind
	Frost	E seed	Moonscape Quartz	Lemongrass	Sugar Maple nr
	Gamma Gray	E surf	Nordic White	Luster	Tambora
	Mocha Spex	Federal Cornerstone	Steel Gray	Macchiato	Terni
	Moss Spex	Fossilized Lava	Tusk	Maple Meadow	Vathi
	Natural Concrete	Fossilized Pebble	Wallowa	Marta Gray	Venus
	Sail White	Frosted Gray	Winter White	Maui Quartz	Volcanic Ice
	Silk	Gold Nugget		Messa Granite	
	Silverado	Gothic cornerstone	Tier 2	Mist	
	Wheat Matrix	Grafite Terrazzo Matrix	Allspice Quartz	Moon Haze	
	White Spex	Gray Galaxy	Armadillo	Oatmeal	
	Tier 2	Gray Renew	Black Pearl	Opal	
	Ashen Concrete	Marron Graniti	Desert Sand	Pantheon	
	Basilica	Mineral Mica	Graphite Granite	Pause	
	Botanical Mosaic	Mokka Graniti	Gray Sand	Populus	
	Chicory Mosaic	Nero Terrazzo Matrix	Harvest	Portland	
	Coastal Mosaic	Nickel Mica	Lunar Sand	Relieve	
	Coffee Silica	Pearl Mica	Merino	Rest	
	Desert Mist	Portofino Mineral	Midnight Pearl	Ripe Cotton	
	Ebony Mosaic	Pure Ice	Mocha Granite	Simplicity	
	Ginger Root Mist	Sage Speck	Moondust	Sonoran Granite	
	Glacier Ore	Saltillo stone	Pebble Pearl	Steel Concrete	
	Indigo Speck	Sea glass	Platinum Granite	Toffee Brown	
	Limed Concrete	Shell stone	Sea Oat Quartz	Tundra Quartz	
	Luna Brite White	Smoke ice	Storm Granite	Umber Granite	
	Luna Concrete	Tawny Agate	Tapioca Pearl	Urban Concrete	
	Luna Pewter	Tumbled Glass	Trail Gray		
	Luna Sand	Tumbled Harvest	Vanilla Sugar	Tier 4	
	Luna Steel	Vintage Gr Mica	Venetian Sand	Andromeda	
	Luna Stone	White Renew	White Granite	Arcas	
	Luna Storm		White Quartz	Birch Bark NR	
	Luna Weather	Tier 4		Carina	
	Night Mist	Burnished Artifacts	Tier 3	Casera	
	Pecan Mosaic	Copper Artifacts	Alabaster	Cloud	
	Pesto Mist	Treasure Artifacts	Arctic Granite	Cosmos	
	Sierra Mist	Spa Artifacts	Bamboo Leaf	Edessa	
	Spanish Paprika Mist		Banana	Ferrara	
	River Rock Mosaic		Basilica	Genova	
	Tier 3		Bellany	Horse Chestnut NR	
	All that jazz		Black	Ice queen	
	Amber Mica		Black Granite	Kala chana	
	Argento Terrazzo		Breeze	Kao	
	Matrix		Chic Concrete	Lago	
	Bianco Mineral		Cobblestone	Lentil	
	Black lava		Coffee Brown	Lucca	
	Blanco terrazzo		Collosum	Marron	
	Bottle Glass Quartz		Concrete Gray	Merapi	
	Caramelo Mineral		Coswal	Milky way	
	Carrara stone		Crystal Beige	Monza	
	Chesapeake shell		Diamond Dust	Naples	
	Citron ice		Egg White	Noble cane	
			Fiery Red	Parma	

- Graded in solid surface finishes are available at their priced tiers on Mile Marker worksurfaces. Lead times may be extended depending on supplier's availability.

• Worksurfaces

Graded in Solid Surface finishes

WILSONART®

Tier 1

Antique White
Cannon Beach
Designer White
Frosty White

Tier 2

Arctic Melange
Avalanche Melange
Baja Melange
Beige Tempest
Black Onyx Mirage
Blanco Riverstone
Bluff Riverstone
Brooklyn Concrete
Burnt Amber Mirage
Caramel Melange
Cashmere Mirage
Chai Cream Mirage
Chicory Cream Melange
Chilled Earth
Coconut Oil
Cool Basalt
French Blue Melange
Frosty White Mirage
Hidden Space
Hotstone
Indigo Melange
Khaki Brown Tempest
Light Beige Mirage
Luminous White
Marzipan Mirage
Midnight Melange
Milk Glass Spectra
Northen Melange
Oatmeal
Pearl Mirage
Quarry Melange
Raven Mirage
San Gabriel Riverstone
Sandy Riverstone
Soothing Grey
Steel Grey Tempest
Titanium Grey
Yukon Riverstone
Zen Grey

Tier 5

Angel Falls
Arctic Dune
Asteroid
Basalt Concrete
Bluestone
Calacatta Perlato
Carbone Marmo
Champagne Ice
Chipped Chocolate
Clouded
Desert Ice
Dusk Ice
Europa
Flint Rock
Garnet Glitz
Gold Glitz
Grey Beola
Grey Lace

Tier 5 continued

Jovian
Kimberlite
Maple Harvest
Masoned Concrete
Moon Geyser
Morning Ice
Mystique
Night Stars
Orion's Belt
Paris Fog
Pebble
Saharan Night
Sea Stone
Silver Smoke
Sonata Chocolate
Triton
Tumbled Stone
White Stone
Whitewater

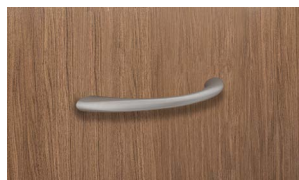
Pull options and finishes

• Base cabinets

Pull options



Awe



Crest



Era



Forte



Grip



Recessed (Satin Nickel only)

• Upper and Storage cabinets

Pull options



Crest



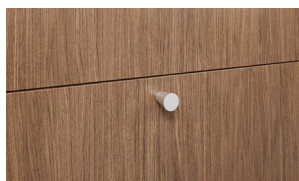
Era



Forte



Grip



Pure



Recessed (Satin Nickel only)

Pull finishes



Bone White



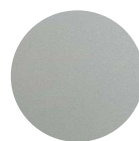
Chalk



Heron



Latte



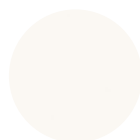
Luster Grey



Moss



Satin Nickel



Polar



Stone



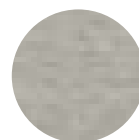
Warm Grey



Gold



Graphite



Polished Aluminum



Onyx



Oiled Bronze



Rust



Soft Bronze



Ion

Lock options and finishes

- Base and Upper cabinet doors and drawers

Lock options



LCK
Key lock specific (black)



LCK
Key lock specific (silver)



PRLK1 / PRLK2
Assigned / Shared electrical lock
(black)



PRLK1 / PRLK2
Assigned / Shared electrical lock
(silver)

- Base and Upper cabinet doors

Lock options



KML1 / KML2
Assigned/Shared mechanical lock
(black)



KML1 / KML2
Assigned/Shared mechanical lock
(white)

- Storage cabinet doors

Lock options



LCK
Key lock specific (black)



LCK
Key lock specific (silver)



PRLK1 / PRLK2
Assigned/Shared electrical lock
(black)



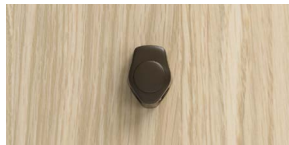
PRLK1 / PRLK2
Assigned/Shared electrical lock
(silver)



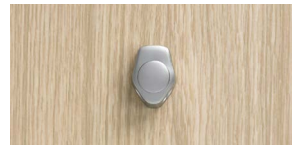
KML1 / KML2
Assigned/Shared mechanical lock
(black)



KML1 / KML2
Assigned/Shared mechanical lock
(white)



PHL1
Pad lock hasp (black)



PHL1
Pad lock hasp (silver)

- **Note:** Electrical lock will be installed with a mounting plate on storage and locker cabinets only. For other cabinets it will come as a separate keypad so the customer can place.
- **Note:** We recommend installing a new battery in the electrical lock upon installation.

Base cabinets

- Base cabinets have a 4" recessed toe kick. In order to complete installation, either cove molding or toe kick rail must be adhered. Order cove molding separately, preferably from a local supplier early in the project. [Toe kick rail information](#).
- Adjustable levelers are on the underside of each base cabinet.
- May be installed alone or with multiple base cabinets. Work surfaces (sold separately) are attached to top of cabinet(s).
- For Glove Box Cutouts, three glove box storage slots come standard in small, medium, and large. The metal glove box holder is included.
- Base cabinet widths available are 12", 15", 18", 21", 24", 27", 30", 33", and 36".
- Base cabinet heights available are 33" and 36".
- Base cabinet depths available are 18.25" and 24.25". Open cabinet depths available are 17.5" and 23.5".

12" - 36" widths



Open
BC



Open / Drawer
BC1



Three Drawers
BC3



Four Drawers
BC4

12" - 24" widths



One Door
BCD



One Door with Open Bottom
BCDO



Drawer / Door
BCDD

15" - 24" widths



Waste Pullout Drawer
BCWP

Base cabinets

18" - 36" widths



Pullout Shelf
BCP

18" - 36" widths



Open
BC + UPPS



Open / Drawer
BC1 + UPPS



Pullout Shelf
BCP + UPPS

• Caregiver Worksurface available on models below

21" - 24" widths



Door with Glove Box
BCDGB

27" - 36" widths



Two Doors
BCD



Two Doors with Open Bottom
BCDO



One Drawer / Two Doors
BCDD



Two Drawers / Two Doors
BCDD2

- [Hinge location and style](#) - available option on any door
- [Waste rings](#) - available on One Door or One Door with Open Bottom
- [Removable drawer liners](#) - available option on any drawer
- [Shelves](#) - available on Open cabinets and behind all doors
- [Pulls](#) - available on all doors and drawers
- [Locks](#) - available on all doors and top drawers

Wall hanging cabinets

- May be installed alone or with multiple base cabinets. Work surfaces (sold separately) are attached to top of cabinet(s).
- For Glove Box Cutouts, three glove box storage slots come standard in small, medium, and large. The metal glove box holder is included.
- Wall hanging short and tall cabinet widths available are 12", 15", 18", 21", 24", 27", 30", 33", and 36".
- Wall hanging short cabinet heights available are 14.5" and 16".
- Wall hanging tall cabinet heights available are 24", 29", and 32".
- Wall hanging short and tall cabinet depths available are 14", 18.25", and 24.25". Open cabinet depths available are 13.19", 17.5", and 23.5".

12" - 36" widths (short)



Open
HBC



Two Drawers
HBC2

12" - 36" widths (tall)



Open
HBC



Open / One Drawer
HBC1



Three Drawers
HBC3



Four Drawers
HBC4

12" - 24" widths (short)



One Door
HBCD

12" - 24" widths (tall)



One Door
HBCD



One Drawer / One Door
HBCDD

15" - 24" widths (tall)



Waste Pullout Drawer
HBCWP

Wall hanging cabinets

18" - 36" widths (tall)



Pullout Shelf
HBCP

18" - 36" widths



Open
HBC + UPPS



Open / Drawer
HBC1 + UPPS



Pullout Shelf
HBCP + UPPS

• Caregiver Worksurface available on 17.5" and deeper models (short and tall) below

21" - 24" widths (tall)



Door with Glove Box
HBCDGB

27" - 36" widths (short)



Two Doors
HBCD

27" - 36" widths (tall)



Two Doors
HBCD



One Drawer / Two Doors
HBCDD



Two Drawer / Two Doors
HBCDD2

- [Hinge location and style](#) - available option on any door
- [Waste rings](#) - available on One Door or One Door with Open Bottom
- [Removable drawer liners](#) - available option on any drawer
- [Shelves](#) - available on Open cabinets and behind all doors
- [Pulls](#) - available on all doors and drawers
- [Locks](#) - available on all doors and top drawers

Sink cabinets - Base

- Base cabinets have a 4" recessed toe kick. In order to complete installation, either cove molding or toe kick rail must be adhered. Order cove molding separately, preferably from a local supplier early in the project. [Toe kick rail information.](#)
- Adjustable levelers are on the underside of each base cabinet except for ADA.
- ADA sink cabinets have a locking front removable panel. The key core is located in the bottom panel and will come installed.
- May be installed alone or with multiple base cabinets. Work surfaces (sold separately) are attached to top of cabinet(s).
- Back panel cutout framed in Black TFL (BL2).
- Sink cabinet widths available are 24", 27", 30", 33", and 36".
- Sink cabinet heights available (except the ADA sink cabinet) are 33" and 36".
- ADA sink cabinet is only available at an ADA height of 33".
- Sink cabinet depths available are 18.25" and 24.25".

24" width



One Door (Base)
BSC



One Full Door (Base)
BSCFD

27" - 36" widths



Two Doors (Base)
BSC



Two Full Doors (Base)
BSCFD

30" - 36" widths



ADA (Base)
ADA

Sink cabinets - Wall hanging

- May be installed alone or with multiple base cabinets. Work surfaces (sold separately) are attached to top of cabinet(s).
- Back panel cutout framed in Black TFL (BL2).
- Sink cabinet widths available are 24", 27", 30", 33", and 36".
- Sink cabinet heights available are 24", 29", and 32".
- Sink cabinet depths available are 18.25" and 24.25".

24" width



One Door (Wall Hanging)
HBSC



One Full Door (Wall Hanging)
HBSCFD

27" - 36" widths



Two Doors (Wall Hanging)
HBSC



Two Full Doors (Wall Hanging)
HBSCFD

- [Hinge location and style](#) - available option on any door
- [Pulls](#) - available on all doors and drawers
- [Locks](#) - available on all doors and top drawers

Worksurfaces

- Work surfaces attach to top of cabinet(s).
- Laminate worksurfaces are HPL. A 4" high backsplash is optional and requires seams to be sealed at installation.
- Solid surface worksurfaces are available in 7 tiers. A 4" high backsplash is optional and will be integrated and seamless.
- 4" high Side Splash is available for left, right, or both ends of the worksurface. This requires seaming at installation.
- [Waste ring](#) available on straight laminate and solid surface tops.
- Straight laminate worksurface widths are available in 3" increments from 12" to 120".
- Straight solid surface worksurfaces widths are available in 3" increments from 12" to 141".
- Corner laminate and solid surface worksurface widths available are 29.75", 34", and 40".
- Straight laminate and solid surface worksurface depths available are 14.25", 18.5", and 24.5".
- Corner laminate and solid surface worksurface depths available are 29.75", 34", and 40".
- All laminate and solid surface worksurfaces have a 1" thickness.

12" - 120" width



Laminate
TL



Laminate with Backsplash
TWBL



Laminate Side splash
B5G / B5H / B5J

12" - 141" width



Solid Surface
TS



Solid Surface
TWBS



Solid Surface Side splash
B5G / B5H / B5J

Corner surfaces



Corner Work Surface
CTL



Corner with Backsplash
CTWBL



Corner Work Surface
CTS

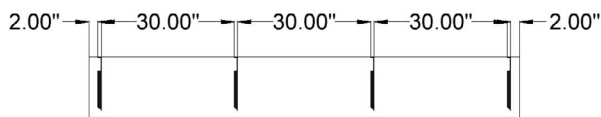


Corner with Backsplash
CTWBS

Worksurface supports

- Worksurfaces require supports when cabinets are not placed underneath.
- When you have a span of worksurface over 30" unsupported, a support bracket is required.
- Base end panels are required at the end of runs where cabinets are not placed.
- MM-1218SB, for use with 14.25" deep worksurfaces, is 12" deep, 18" tall, and 2" wide.
- MM-1521SB, for use with 18.5" and 24.5" deep worksurfaces, is 15" deep, 21" tall, and 2" wide.
- Base end panel width is 0.75".
- Base end panel depths available are 17.5" and 23.5".
- Base end panel heights available are 29", 33", and 36".

14.25" deep

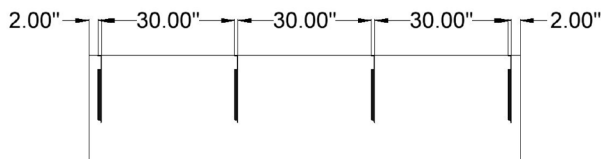


Worksurface support diagram



Support bracket
MM-1218SB

18.5" and 24.5" deep



Worksurface support diagram



Support bracket
MM-1521SB

Base end panel



Base End Panel
BE

Faucets and Sinks

- Sinks not available on 12", 15", 18", and 21" width worksurfaces.
- All faucets are polished chrome with brass bodies.
- All sinks have a standard lavatory drain hole (1 5/8" dia.) - drain not included.
- All drop in and undermount sinks are stainless steel. B5K and DRS4 are Glacier White. DRS3 is Polar White.

Paddle faucets



Paddle Handle 3.5" Gooseneck
B5R



Single Handle 5.75" Gooseneck
HND1



Paddle Handle 8" Gooseneck
HND3



Single Handle 4.5" Spout
HND4

Sensor faucets



Sensor 5.25" Gooseneck
B5S



Sensor 4.875" Spout
HND2



Sensor Edge 4.75" Spout
HND5

Drop In Sinks



Drop-In 4.5" Deep / with Overflow
B5P / DRS1



Drop-In 7.5" Deep with Overflow
DRS2



Drop-In 4.5" Deep / with Overflow
B5P / DRS1



Drop-In 7.5" Deep with Overflow
DRS2

Undermount / Integral



Undermount 4.5" Deep / with Overflow
B5M / UMS1



Undermount 7.5" Deep
UMS2



Integral 4.5" Deep / with Overflow
B5K / DRS3



Integral 7.5" Deep
DRS4

Upper cabinets

- May be installed alone or with multiple upper cabinets.
- For Glove Box Cutouts, three glove box storage slots come standard in small, medium, and large. The metal glove box holder is included.
- Upper cabinet widths available are 12", 15", 18", 21", 24", 27", 30", 33", and 36".
- Upper heights available for all flat cabinets are 24", 30", and 36".
- Upper heights available for all sloped cabinets are 29", 35", and 41".
- Upper cabinet depth is 14". Open cabinet available depth is 13.19".

12" - 36" widths



Open
UC



Open - Sloped
UCS



Lift Doors
UCL



Lift Doors - Sloped
UCLS

12" - 24" widths



One Door
UCD



One Door - Sloped
UCDS



One Half Door
UCHD



One Half Door - Sloped
UCHDS

21" - 24" widths



Door with Glove Box
UCDGB



Door with Glove Box - Sloped
UCDGBS

Upper cabinets



Upper storage cabinets

- May be installed alone or with multiple upper cabinets.
- One hinged door with two box drawers.
- One stationary and one adjustable shelf.
- Three glove box cutouts including metal glove box holder. **Note:** Glove box end panel finish defaults to Frosty White when the following TFL finishes are chosen: Slate Grey, Drift, Finn, Loft, Peak, Char, or Saddle.
- Upper cabinet widths available are 12", 15", 18", 21", and 24".
- Upper heights available for flat cabinets are 35", 38", 41", 44", 47", and 50".
- Upper heights available for sloped cabinets are 43", 46", 49", 52", 55", and 58".
- Upper cabinet depths available are 18.25" and 24.25".



- [Hinge location and style](#) - available option on any door
- [Removable drawer liners](#) - available option on any drawer
- [Shelves](#) - available on Open cabinets and behind all doors
- [Pulls](#) - available on all doors and drawers
- [Locks](#) - available on all doors and top drawers

Storage and Locker cabinets

- Storage and locker cabinets have a 4" recessed toe kick. In order to complete installation, either cove molding or toe kick rail must be adhered. Order cove molding separately, preferably from a local supplier early in the project. [Toe kick rail information.](#)
- Adjustable levelers are on the underside of each base cabinet.
- May be installed alone or with multiple cabinets.
- For Glove Box Cutouts, three glove box storage slots come standard in small, medium, and large. The metal glove box holder is included.
- Note:** SCDGB and SCDGBS glove box end panel finish defaults to Frosty White when the following TFL finishes are chosen: Slate Grey, Drift, Finn, Loft, Peak, Char, or Saddle.
- Storage and locker cabinet widths available are 12", 15", 18", 21", 24", 27", 30", 33", and 36".
- Storage and locker heights available for flat cabinets are 60", 66", 72", 78", and 84".
- Storage and locker heights available for all sloped cabinets are 68.5", 74.5", 80.5", 86.5", and 92.5".
- Storage and locker cabinet depths available are 14", 18.25", and 24.25". Open storage cabinet is 13.19", 17.5", and 23.5".

12" - 36" widths



Open
SC



Open - Sloped
SCS

12" - 24" widths



Two Lockers
SCD2



Two Lockers - Sloped
SCD2S



Z Lockers
SCDZ



Z Lockers - Sloped
SCDZS



Four Lockers
SCD4



Four Lockers - Sloped
SCD4S

Storage and Locker cabinets, continued

12" - 24" widths



One Door
SCD



One Door - Sloped
SCDS



One Door with Glove Box
SCDGB



SCDGB shown in Drft with
Frosty White end panel



One Door with Glove Box -
Sloped SCDGBS



SCDGBS shown in Drft
with Frosty White end panel

12.25" - 24.25" widths



Double Sided Open
DSSC



Double Sided Doors
DSSCD

27" - 36" widths



Two Doors
SCD



Two Doors - Sloped
SCDS

- [Hinge location and style](#) - available option on any door
- [Shelves and interior options](#) - shelves available on all cabinets except for Z and Four Door Lockers. Coat hooks available on every cabinet. Hanging bar available on all 24" deep models except Four Door Lockers. Wardrobe Rail available on all 24" wide models except Z and Four Door Lockers.
- [Pulls](#) - available on all doors and drawers
- [Locks](#) - available on all doors and top drawers

Storage and Locker cabinets - Power

- Power available behind Storage and Locker cabinets 24" wide or less.
- If specified for a Locker cabinet, there will be a power unit behind each door.
- When specifying power, daisy chainable power is an option. Power in-feeds and jumpers will need to be ordered separately to complete installation.
- Power unit behind each door is PS-82W with (1) 15 amp outlet and (2) 2.1 amp USB ports.
- Maximum amount of power units that can be daisy chained together is 20 (for lockers there is one behind every door so a Four Door Locker has (4) power units).
- Hardwire power infeed has a 6' cord.
- Plug-in power infeed has a 6' cord and a 90 degree plug.
- Power jumpers come in two widths - 48" and 60".
- When power is specified, a 2" gap will be added to the backside of the cabinet (standard gap is 0.5").

Power unit



Power / Daisy Chainable Power
RM / H6K



One Door Storage Cabinet
Under fixed shelf at bottom of cabinet

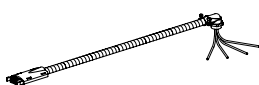


Two + Z Door Locker Cabinet
Under half shelf added when power is specified

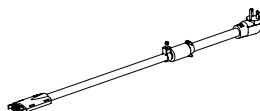


Four Door Locker Cabinet
Under top panel of the locker

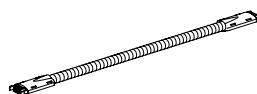
Daisy chain products



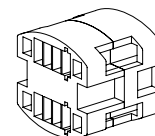
Hardwire Power In-Feed
PWF2M



Plug-In Power In-Feed
PWF20AMP



Power Jumper 48W / 60W
MCJ48M / MCJ60M



H Block Connector
HCB

Power diagrams



Diagram - End of Run
*Power In-Feed and (4) Jumpers

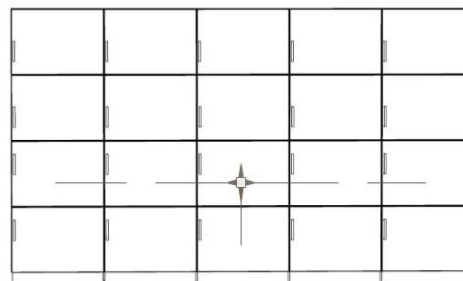


Diagram - Middle of Run
*Power In-Feed, H Block Connector, and (5) Jumpers

Server, Media, and Bedside cabinets

- Server and Media cabinets have a 4" recessed toe kick. In order to complete installation, either cove molding or toe kick rail must be adhered. Order cove molding separately, preferably from a local supplier early in the project. [Toe kick rail information.](#)
- Adjustable levelers are on the underside of each base cabinet.
- Media cabinet widths available are 21" and 24". Nurse media server widths available are 24.5", 30.5", and 38.5". Bedside cabinet width is 20.25".
- Media cabinet height is 45". Nurse media server height is 37". Bedside cabinet height is 13"
- Media cabinet depth is 17.63" for open and magazine and 18.25" for door. Nurse media server depth is 23". Bedside cabinet depth is 13".

12.25" - 24.25" widths



Double Sided Server - Open
DSSS



Double Sided Server - Doors
DSSSD

20.25" width



Bedside - Open
BC



Bedside - One Door
BCD



Bedside - Two Drawers
BC2

21" - 24" widths



Media - Open
MC



Media - Magazine
MCM



Media - Door
MCD

Server, Media, and Bedside cabinets

21.25" - 24.25" widths



Double Sided Media - Open
DSMC



Double Sided Media - One Door
DSMCM



Double Sided Media - Two Drawers
DSMCD

24.5" - 30.5" widths



Nurse Server - Open
MNSL / MNSR



Nurse Server - Three Drawers
MNS3L / MNS3R



Nurse Server - Four Drawers
MNS4L / MNS4R



Nurse Server - One Drawer / One Door
MNSDDL / MNSDDR

38.5" width



Nurse Server - Open
MNS



Nurse Server - Three Drawer
MNS3



Nurse Server - Four Drawer
MNS4



Nurse Server - One Drawer / One Door
MNSDD

- [Hinge location and style](#) - available option on any door
- [Removable drawer liners](#) - available option on any drawer
- [Pulls](#) - available on all doors and drawers
- [Locks](#) - available on all doors and top drawers

Toe kick rails

- Toe kick rails are recommended if cove molding is not being installed along cabinets with recessed toe kick in the field.
- Toe kick rail is recommended to be installed with silicone or a similar adhesive applied to the back side of the rail.
- Toe kick rail widths are available in two sizing options. One ranging from 11.5" to 95.5" in 3" increments. The second ranging from 12" to 96" in 3" increments.
- Toe kick rail height is 4".
- Toe kick rail depth is .75".

Toe Kick Rail



Toe Kick Rail
TR

Fillers

- Fillers for Base and Storage cabinets have a 4" recessed toe kick.
- Fillers are 6" wide and are meant to be trimmed in the field.
- Filler heights are available at height of all cabinets.
- Filler depth is 0.75".

Base cabinets



Base Filler
BF



Corner Base Filler
CBF



ADA Base Filler
ADAF

Fillers

Wall hanging cabinets



Base Filler
BF



Corner Base Filler
CBF

Upper cabinets



Upper Filler
UF



Upper Filler Sloped
UFS



Corner Upper Filler
CUF



Corner Upper Filler Sloped
CUFS

Storage cabinets



Storage Filler
SF



Storage Filler Sloped
SFS



Corner Storage Filler
CSF



Corner Storage Filler Sloped
CSFS

Wall panels

- Adding a back painted glass marker board, non-magnetic or magnetic, is an option. For panel heights 24" to 42" - the marker board is positioned 1" from top of panel to top of glass. For panel heights 72" to 86" - marker board is positioned 49" from bottom of panel to bottom of glass. On 24" wide panels the marker board will be centered. On 36" to 60" wide panels, the marker board can be specified either left or right.
- Wall panel widths available are 24", 36", 48", 52", and 60".
- Wall panel heights available for flat top wall panels are 24", 32", 40", 72", 78", and 84". Wall panel heights available for sloped wall panels are 26", 34", 42", 74", 80", and 86".
- Wall panel depth is 0.75".

Wall panels



Flat panel
WP



Sloped panel
WPS



Flat panel with markerboard
WP-B6A / WP-C2E



Sloped panel with markerboard
WPS-B6A / WPS-C2E

Lighting

- Energy efficient LED 5200K task lights available for underneath upper cabinets.
- TL-17 and TL-14 are daisy chainable. Daisy chain connectors are available separately.
- TL-18 is 12" wide available for cabinets 15" wide or greater.
- TL-17 is 18" wide and available for cabinets 21" wide or greater.
- TL-14 is 24" wide and available for cabinets 27" wide or greater.
- Task lights are 2.94" deep and 1" high.
- DC-1 is 8" long, DC-2 is 12" long, DC-3 is 24" long, DC-4 is 48" long, and DC-5 is 72" long.



12" Wide task light
TL-18



18" Wide task light
TL-17



24" Wide task light
TL-14



Daisy chain connectors
DC-1 / DC-2 / DC-3 / DC-4 / DC-5

Lighting

Bench cabinets

- Bench cabinets have a 4" recessed toe kick. In order to complete installation, either cove molding or toe kick rail must be adhered. Order cove molding separately, preferably from a local supplier early in the project. [Toe kick rail information](#).
- Adjustable levelers are on the underside of each bench cabinet.
- Bench cushions sold separately and will attach to bench with velcro.
- Bench cabinet widths available are 24", 30", 36", and 48".
- Bench cabinet height is 17".
- Open bench cabinet depths available are 11.5", 17.5", and 23.5". Closed bench cabinet depths available are 12.25", 18.25", and 24.25". Double sided cabinet depth is 24".
- Bench cushion widths available are 24", 30", 36", and 48".
- Bench cushion thickness is 2.38".
- Open bench cushion depths available are 12.5", 18.5", and 24.5". Double sided bench cushion depth is 26" deep.

24" - 36" width



Open
BC



Closed
BCC



Open Double Sided
DSBC

48" width



Open
BC



Closed
BCC



Open Double Sided
DSBC

24" - 48" width



Cushion
BC



Double Sided Cushion
DSBC

Dividers and Privacy panels

- Adjustable levelers are on the underside of each divider.
- Privacy panels are available in three finishes with options - glass, 3Form/Lumicor, and frosted acrylic.
- Privacy panels can be attached to dividers using the separate brackets. These are sold in packs of 2. Brackets are available in Onyx, Bone White, Warm Grey, Oiled Bronze, Luster Grey, Polished Aluminum, and Polar (see p. 11 for color swatches).
- Divider widths available are 24", 30", 36", and 48".
- Divider heights available are 42" and 48".
- Divider depth is 1".
- Privacy panel widths available are 17", 23", 29", and 41".
- Privacy panel height is 8".
- Privacy panel depth is 1/4".

Dividers

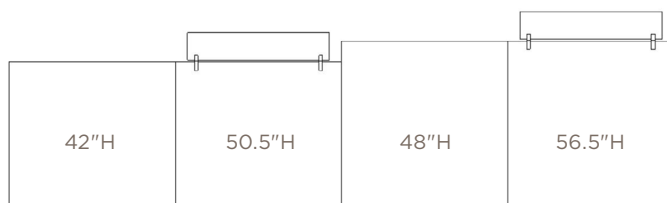


Divider 42H
42DP



Divider 48H
48DP

Elevations



42"H Divider

42"H Divider
+
8" Privacy panel

48"H Divider

48"H Divider
+
8" Privacy panel

Privacy panels



Glass
PVPG



3Form or Lumicor
PVPF



Frosted Acrylic
PVPA



Bracket
PVPBKT-2

Glass

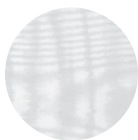


Glass



Frosted Glass

3Form



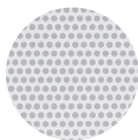
Aero White



Drift Brown



Drift Green

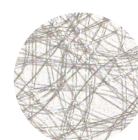


Micro Cirque



Paper Cut

Lumicor



Silver Spun



Oyster Linen

Acrylic



Frosted Acrylic

Equipment rail and attachments

- Extruded aluminum equipment rail has two thermoplastic end caps and laminate overlay. There are pre-drilled mounting holes.
- Attachments available.
- Equipment rail adapter tool set available with 32 piece screwdriver and bit set for equipment rail and accessory installation.
- Equipment rail widths available are 4", 8", 12", 18", 24", 30", 36", 42", 48", 54", and 60".
- Equipment rail height is 1".
- Equipment rail depth is 1".

Equipment rail



Equipment rail
ER



Single Adapter
ERAS



Double Adapter
ERAD



Universal Paper Towel Mount
ERPT



Universal Vacuum Bottle Slide
ERVS

Equipment rail attachments



Single Universal Glove Box
ERGB1



Double Universal Glove Box
ERGB2



Triple Universal Glove Box
ERGB3



Universal Sharps Container Mount
ERSC

Equipment rail and attachments



Universal Soap/Foam Dispenser Mount
ERSD



Welch Allyn Blood Pressure Mount
ERBP



Welch Allyn Ophthalmoscope Mount
EROS



Welch Allyn Speculum Container Mount
ERSP



Welch Allyn Sure Temp Thermometer Mount
ERTM



U-Shaped Wire Basket
ERUB



Rectangular Wire Basket
ERRB



Single Hook
ERSH



Triple Hook
ERTH



Paper Display Rail
ERPD



Triple Clip Organizer
ERTC



Cord Bundler
ERCB



Folding Shelf
ERFS

Equipment rail attachments