

## CODE NUMBER

70103001

## DESCRIPTION

SU-7019 Urinal and CX 8198 Flushometer.

## COMPONENTS

- Flushometer: Code 3400321
- Urinal: Code 1107019




## DETAILS

- Flush Volume: 0.125 gpf (0.5 Lpf)
- Nominal Dimensions: 14 ¾" x 14 3/16" x 23 ½" (375 x 360 x 597mm)

## FIXTURE FEATURES

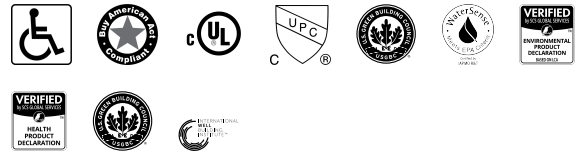
- White Vitreous China
- Washdown flushing action
- Integral flushing rim
- ¾" I.P.S. rear spud inlet
- 2" NPT outlet flange
- Vandal resistant strainer assembly included
- All mounting hardware included
- 100% factory flush tested

## VIDEOS

-  CX Flushometer Product Video
-  CX Flushometer - Sensor Installation
-  CX Flushometer - Sensor Vacuum Service
-  CX Flushometer - Sensor Piston Service
-  CX Flushometer Product Video (Spanish)



## COMPLIANCES & CERTIFICATIONS



(ADA Compliant, BAA Compliant, cUL Certified, cUPC Certified, LEED V4 Water Efficiency Credit, WaterSense Listed, EPD, HPD, LEED Materials & Resources HPD Credit, WELL Building Standard)

## DOWNLOADS

- [CX 8158/8198 Installation Instructions](#)
- [Small Spud Urinal Installation Instructions](#)
- [Additional Downloads](#)

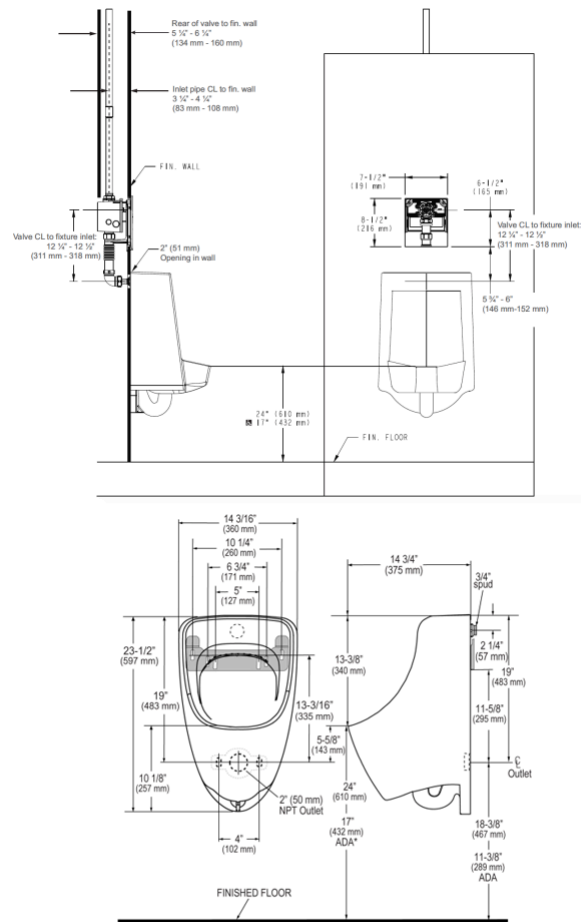
## NOTES

All information contained within this document subject to change without notice.

## WARRANTY

[View Warranty Information](#)

**ROUGH-IN**



NOTE: ADA urinal rim height requirements allow all heights 17" and below. Sloan strongly recommends roughing in the drain to achieve a 16 1/2" rim height or less to ensure compliance.

**Sloan 10500 Seymour Ave, Franklin Park, IL 60131**

Phone: 800.982.5839 • Fax: 800.447.8329 • [sloan.com](http://sloan.com)