



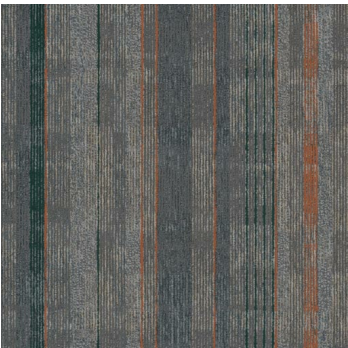
Contact Sport (TCON)

Product Quick Specs

Style Name/Number	Contact Sport TCON
Color Name/Number	Teed Up CON14
Construction	Textured Loop
Standard Backing	Nexus® Modular
Dye Method	Solution Dyed
Fiber Type	Encore® SD Ultima® (with recycled content)
Face Weight	17 oz./sy (576 grams/m2)
Pile Density	6375 oz./y3 (236.39 kg/m3)
Pattern Repeat	N/A
Gauge	1/10 (3.94 rows/cm)
Stitches	12 stitches/in (4.72 stitches/cm)
Standard Size	24" x 24" approx. (60.96cm x 60.96cm)
Standard Adhesive	Commercialon Premium Modular and LVT Adhesive
Optional Adhesive	TileTabs
Smoke Density	Less then 450 flaming
Static Test	Less then 3 kv
Standard Warranties	Nexus Modular Commercialon Adhesive for Modular Carpet & LVT Nexus FC Cushion Encore SD Ultima Fiber
Optional Warranties	Commercialon High Moisture Adhesive for Modular Carpet and LVT Tile Tabs



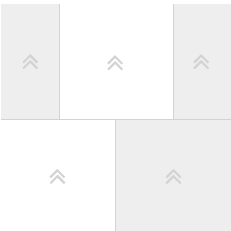
Products Installed



Contact Sport TCON
Modular
CON14 Teed Up

CARPET

Installation Method



Brick (24x24)

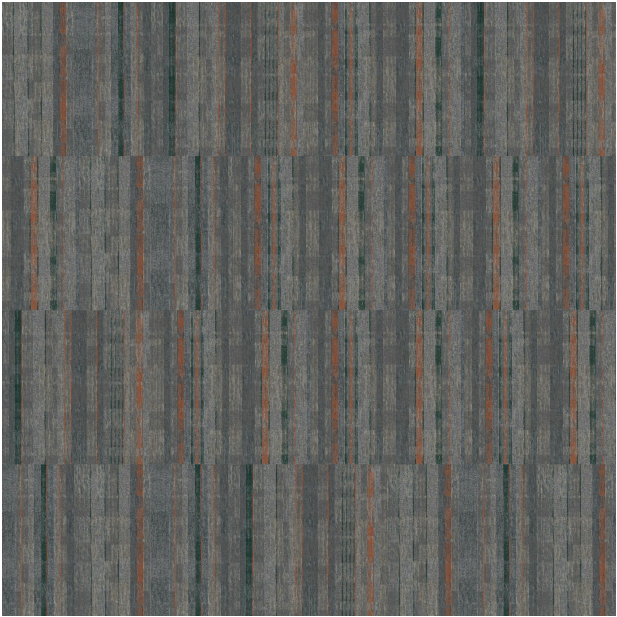
This three dimensional rendering is for visualization purposes only and may not be an exact representations of the selected products. Pile heights may vary from product to product and adhesive requirements may vary depending on product selection. The review of actual product samples are recommended before final selection. Please contact your EF Contract sales representative with any questions. This unique carpet design is protected under the U.S. Copyright Act of 1976. Any unauthorized copying or duplication of this design constitutes copyright infringement in violation of federal law.

Keys



Contact Sport TCON
Modular
CON14 Teed Up

CARPET



Pattern Diagram

