

COLOR:

HANDRAIL WOOD SPECIES: _____

HANDRAIL WOOD FINISH: _____

*MOUNTING BRACKET: _____

COLOR TO BE SELECTED FROM ONE OF C/S STANDARD COLORS.

*MOUNTING BRACKET SUPPLIED IN STANDARD MILL FINISH. OPTIONAL CLEAR ANODIZED AND POWDER COAT FINISH AVAILABLE. PLEASE ADVISE POWDER COAT FINISH IF REQUIRED.

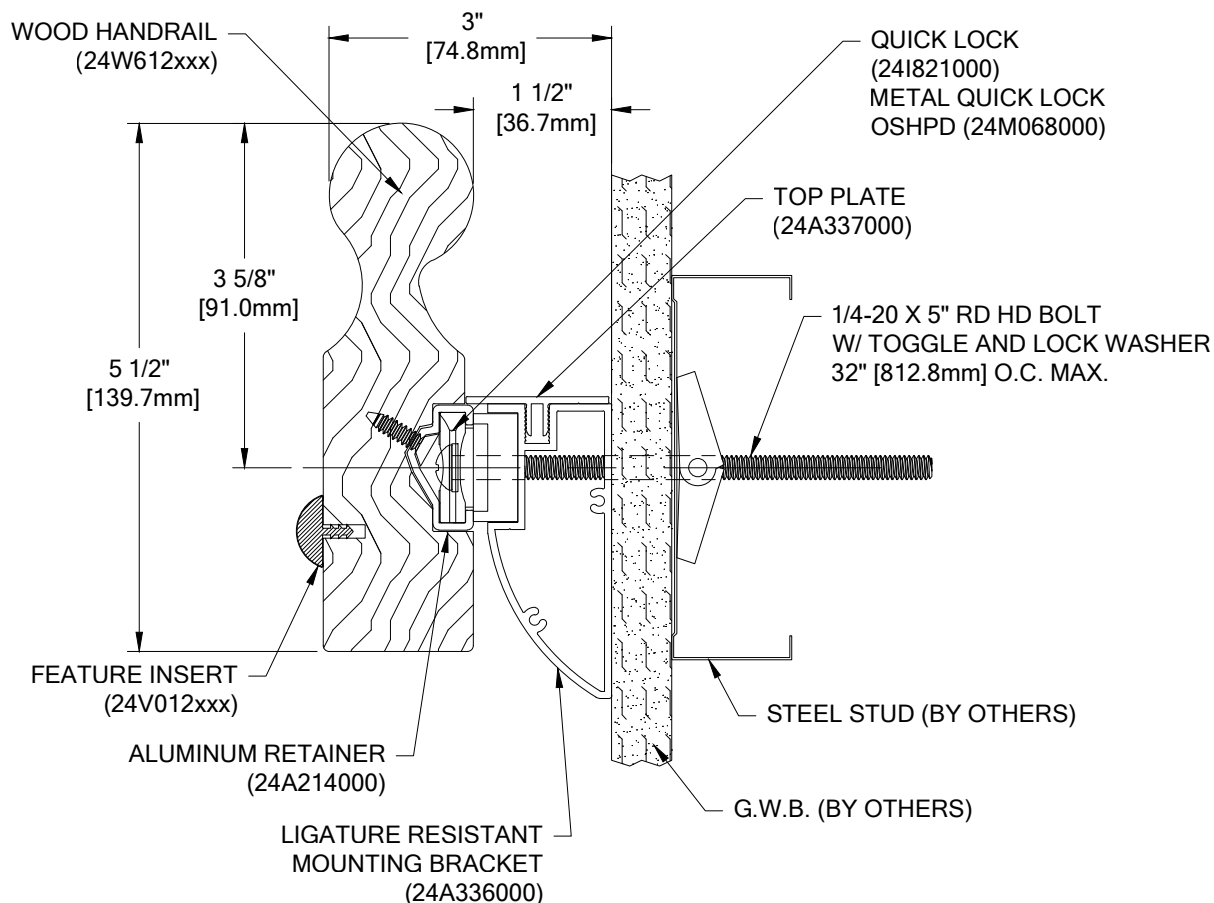
FEATURE INSERT COLOR: _____

REFER TO C/S CATALOG FOR FEATURE INSERT COLORS.

TOTAL
L/F REQ'D

LEFT
END
CAPS

RIGHT
END
CAPS



AW-10CVBCM

| WALL CONDITION | SPECIFIED FASTENER | DRILL DIAMETERS | | C/S PART NUMBER |
|---------------------------------------|--|-----------------|----------|--|
| | | WALL | RETAINER | |
| STEEL STUD/GYPSUM WALL | 1/4-20 X 5" ROUND HEAD BOLT WITH TOGGLE, AND LOCK WASHER | 3/4" | 9/32" | 90H049002 90H006003 |
| CONCRETE/CONC. BLOCK | #14 X 5" PHILLIPS RD HD ALL-PURPOSE SCREW | 3/16" | 9/32" | 90H287002 |
| WOOD STUD/GYPSUM WALL | #14 X 5" PHILLIPS RD HD ALL-PURPOSE SCREW | 1/8" | 9/32" | 90H287002 |
| 20 GA. STEEL STUD/GYPSUM WALL (OSHDP) | 1/4-20 X 5" RD. HD. BOLT WITH FLAT WASHER 1/4" TOGGLER WING 3M MOLDABLE FIRE PUTTY | 1/2" | 9/32" | 90H659002 90H007003 90H062004 90M012000 |

FABRICATION AND APPEARANCE OF THIS WOOD RAIL MATERIAL IS BASED ON FACTORY CUT AND ATTACHED END CAPS. IF STOCK SIZES ARE REQUIRED, END CAPS MUST BE CUT IN THE FIELD BY INSTALLER OR C/S WILL NOT GUARANTEE MATCH AND APPEARANCE OF CAPS TO RAIL.



Construction Specialties™

6696 Route 405 Highway, Muncy PA 17756
(800) 233-8493 • Fax (570) 546-4692 • www.c-sgroup.com

PROJECT:

JOB NO.:

CUSTOMER:

REP:

DRAWN BY:

REVISION:

F&F:

DATE:

SHEET NO: