

COLOR:

TOP RAIL WOOD SPECIES: \_\_\_\_\_

TOP RAIL WOOD FINISH: \_\_\_\_\_

\*END CAPS: \_\_\_\_\_

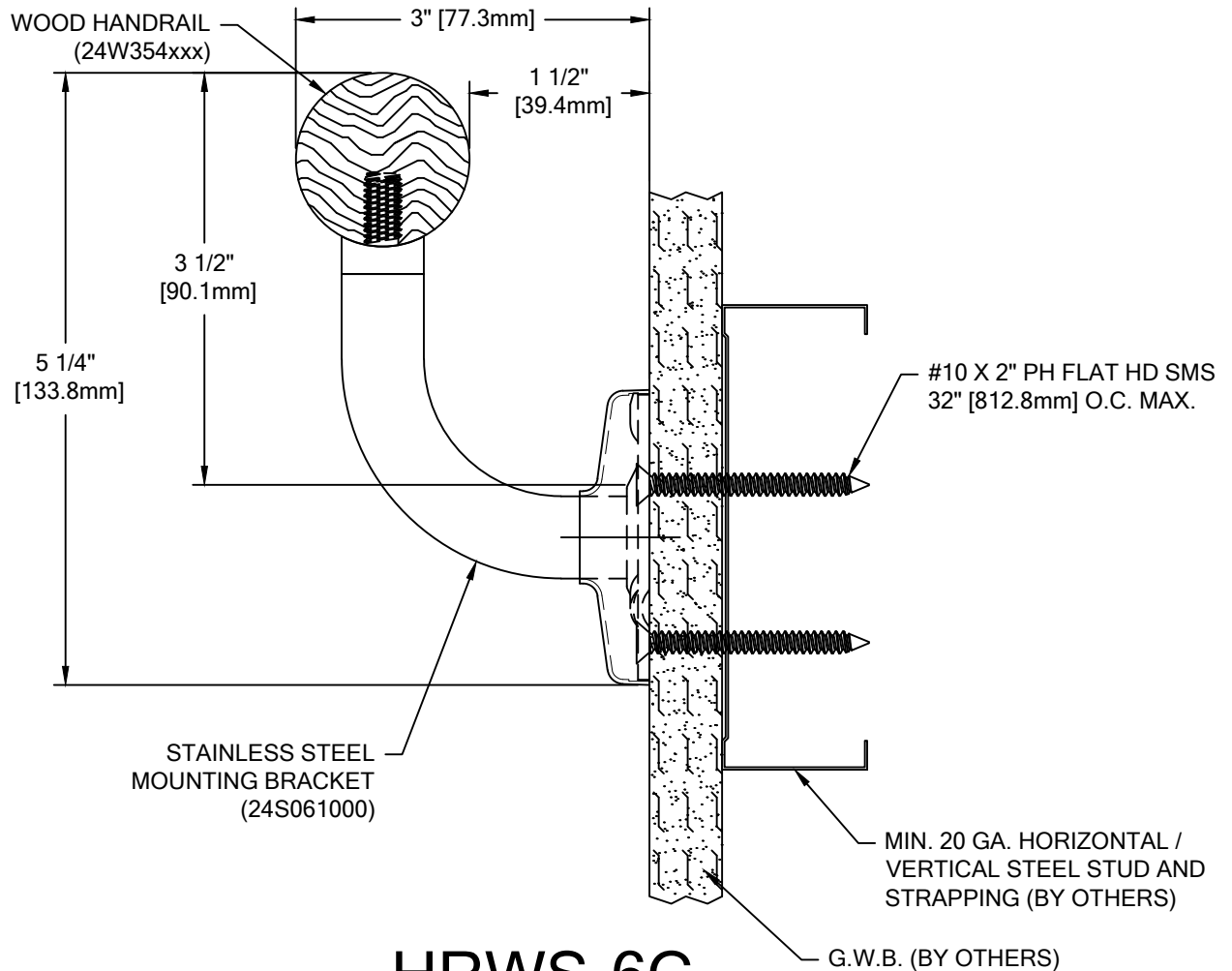
COLOR TO BE SELECTED FROM ONE OF CS STANDARD COLORS.

\*CAPS/CORNERS ARE AVAILABLE WITH AN OPTIONAL POWDER COAT FINISH.  
PLEASE ADVISE POWDER COAT FINISH IF REQUIRED.

WOOD END CAPS AND INSIDE/OUTSIDE CORNERS ALSO AVAILABLE.

**NOTE: STAINLESS STEEL CORNERS OTHER THAN 90°  
ARE UNAVAILABLE FOR THIS MODEL. THIS MODEL IS  
FABRICATED CUT-TO-SIZE, THEREFORE FIELD  
VERIFIED DIMENSIONS ARE REQUIRED.**

TOTAL L/F REQ'D	END CAPS	I.S. REQ'D	O.S. REQ'D



**HRWS-6C**

WALL CONDITION	SPECIFIED FASTENER	DRILL DIAMETERS		CS PART NUMBER
		WALL	RETAINER	
STEEL STUD/GYPUSM WALL	#10 X 2" PHILLIPS FLAT HEAD SHEET METAL SCREW	1/16"	N/A	90H431002
CONCRETE/CONC. BLOCK	1/4" X 2 1/4" HEX HEAD MASONRY	3/16"	N/A	90H027004
WOOD STUD/GYPUSM WALL	#9 X 2 1/4" PHILLIPS WAFER HEAD DRYWALL SCREW	N/A	N/A	90H421002
20 GA. STEEL STUD/GYPUSM WALL (OSHPD)	1/4-20 X 3" FLAT HEAD BOLT 1/4" TOGGLER WING 3M MOLDABLE FIRE PUTTY	1/2"	N/A	90H282002 90H062004 90M012000

PROJECT:

REVISION:

JOB NO.:

F&F:

CUSTOMER:

REP:

DATE:

DRAWN BY:

SHEET NO:



Hughesville, PA | 800.233.8493 | 570.546.5941  
Mississauga, ON | 888.895.8955 | 905.274.3611  
[www.c-sgroup.com](http://www.c-sgroup.com)

© Copyright 2019 Construction Specialties, Inc.