

Operation Manual And Safety Information

Vac-Matic™ 14 Insulation Vacuum Machine



Parts – Service – Accessories

863.294.3206 / 800.237.7841

www.certainteedmachineworks.com

PLEASE READ THIS MANUAL BEFORE PLACING YOUR NEW
VAC-MATIC™ 14 INSULATION VACUUM MACHINE INTO SERVICE

Welcome



Table of Contents

SPECIFICATIONS.....4

SAFETY.....6

OPERATION.....8

PREVENTIVE MAINTENANCE.....10

PARTS DRAWINGS.....12

Specifications

MODEL:

Vac-Matic 14
Four-inch inlet and outlet ports
Six-inch inlet and outlet ports
Four-inch inlet and six-inch outlet ports

ALL MACHINES:

Kohler gasoline engine – 14 HP single cylinder air cooled
350 CCA battery
heavy duty housing and fan impeller

HEIGHT: 44"

LENGTH: 31"

WIDTH: 32"

WEIGHT: 240 lbs

GENERAL

This introduction is presented to provide a basic description of the function and purpose of the **VAC-MATIC™ 14** insulation vacuum machine.

The **VAC-MATIC™ 14** is principally designed to vacuum damaged or contaminated insulating materials generally used for attic insulation. The **VAC-MATIC™ 14** can also be configured for wall spray applications to return scrubbed or recycled material to a blowing machine for remix into new material. Whenever you do a wall spray application with the **VAC-MATIC™ 14** machine, the insulation manufacturer's instructions prevail since they guarantee the final results.

When vacuuming damaged material, the **VAC-MATIC™ 14** is normally placed so the hose connected to the inlet port can reach the end of the job. The damaged material can be vacuumed into a bag connected directly to the outlet port or hose that is connected to the outlet port leading to a dumpster or other form of containment. When vacuuming insulation for wall spraying, the **VAC-MATIC™ 14** is normally located half way between the point of application and the blowing machine is generally connected to a filtering housing or material deflector that directs material back into the hopper.

The **VAC-MATIC™ 14** machine is equipped with an electric start engine which can also be pull started if the battery is weak or dead. Its ergonomic design and pneumatic tire make it easy to maneuver around job sites. The compact design also saves valuable floor space in the transportation vehicle. The **VAC-MATIC™ 14** is built with a heavy duty housing and impeller, removable front cover, and replaceable outlet port.



Safety

BEFORE YOU RUN THIS MACHINE... PLEASE STUDY THE REST OF THIS MANUAL

Please contact our sales department at 800-237-7841 for any optional accessories such as; hose, sleeves, clamps, and material containment bags.

The **VAC-MATIC™ 14** insulation vacuum machine is factory equipped with a material inlet safety door **1**. Do not remove this door for any reason! It will close during operation if the vacuum hose comes loose from the inlet port **2**. You should always attach the vacuum hose to the front cover **3** by lifting the door and securing the hose with a clamp to the inlet port before you start the machine. You will see the following label on this door.



WARNING: If any foreign object should enter the machine; shut down the engine and remove the key from the ignition before retrieving the object. Never reach into the machine while it is in operation.

Before you start the **VAC-MATIC™ 14** insulation vacuum machine, make sure the vacuum housing is free of foreign objects. Make sure hose is attached firmly to the inlet port and that hose or containment bags are firmly attached to the outlet port. Make sure containment bags do not rest against the engine as this may start a fire or block the engine air cooling inlet screen. Make sure the front cover and outlet port are securely mounted to the machine.

During machine operation, never stand on the **VAC-MATIC™ 14** machine. You may lose balance and fall onto the machine causing great bodily harm or tip it over potentially causing damage. Avoid vacuuming foreign objects such as screws, nails, pieces of wood, etc. as this will damage the inside of the vacuum machine. Never leave the machine unattended during operation.

CERTAINTED MACHINE WORKS RECOMMENDS THAT THE OPERATOR'S WEAR PROPER SAFETY EQUIPMENT SUCH AS EYE AND EAR PROTECTION AS WELL AS AN APPROVED DUST MASK WHEN OPERATING THE VAC-MATIC™ 14 INSULATION VACUUM MACHINE.

Operation



1. Make sure vacuum is free of foreign objects.
2. Fill fuel tank with clean grade fuel and check engine oil. Open fuel shut off valve.
3. Make sure cover plate and outlet port are firmly attached.
4. Connect hose firmly to inlet port and hose or containment bag to outlet port with clamps.
Connect additional hose sections with thin wall couplings, 1/16 inch, to minimize restrictions.
Containment bags and thin wall couplings can be purchased from CertainTeed Machine Works.
5. Clear area around outlet port
6. Start engine in accordance with manufacturer's literature and increase engine speed until the throttle is at full speed. The engine will run 3600 RPM.
7. You are now ready to begin the vacuuming process.

WARNING: Do not smoke when operating the machine.

WARNING: Do not smoke or be near any flame while refueling the gas tank. Do not fill tank while the engine is running or hot. Fumes from fuel are explosive and can be fatal. Follow all safety precautions when handling any type of fuel.

WARNING: Carbon monoxide poisoning from engine exhaust can be fatal. Make sure to operate the machine in a well ventilated area.

WARNING: Always operate the VAC-MATIC™ 14 Machine on a level surface. Operating the machine when it is not level could lead to engine failure or the machine tipping over.

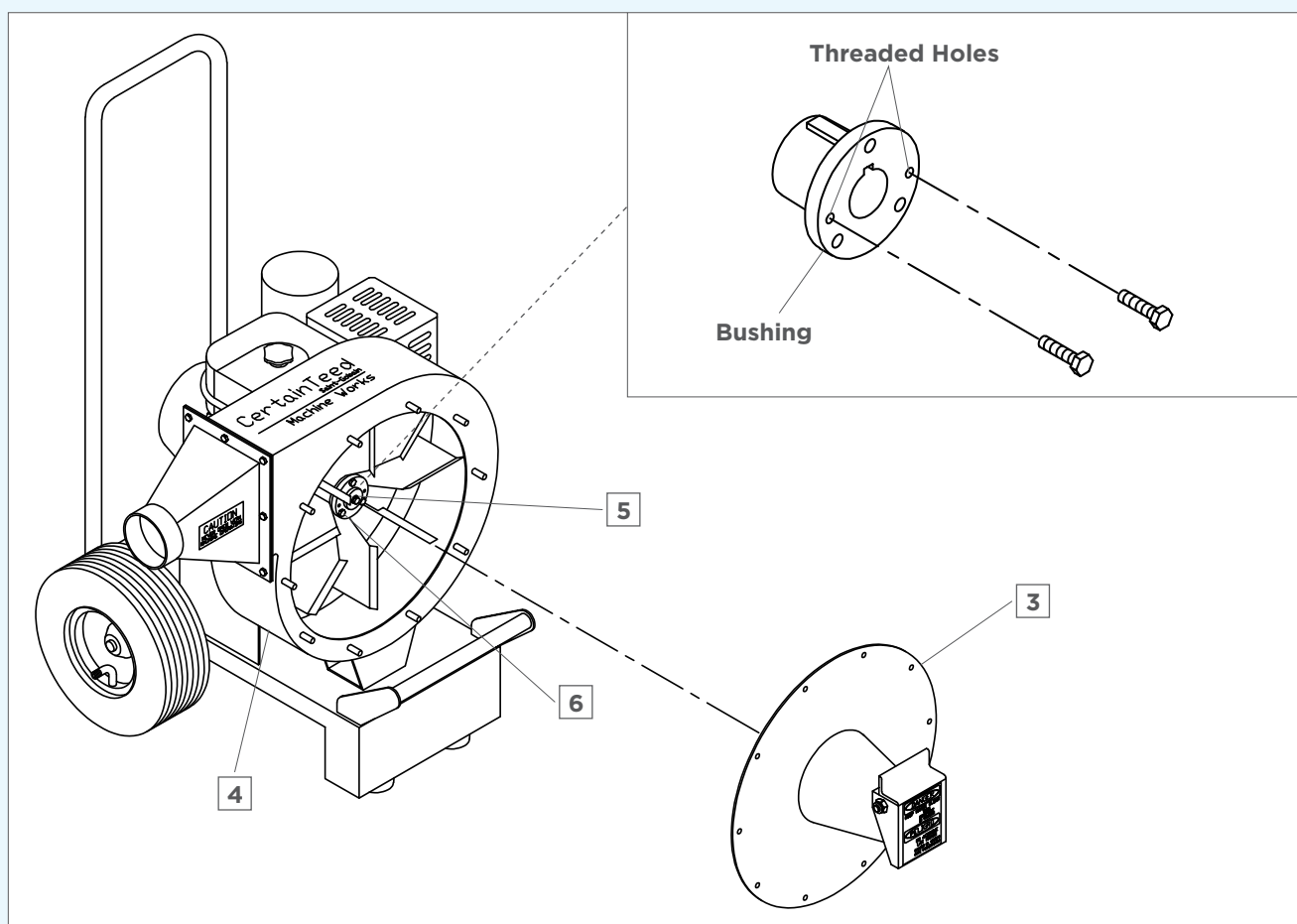
UPON COMPLETION OF THE JOB

1. Make sure vacuum hose is empty.
2. Move throttle to slow position and allow engine to run for several minutes.
3. Turn engine off.
4. Turn fuel shut off valve closed.
5. Remove hoses and or containment bag from machine.

WARNING: Never replace a containment bag while the engine is on. Always shut down the engine and remove the key from the ignition when changing bags. Never remove or replace hoses while the engine is on.

WARNING: Failure to turn the fuel shut off valve closed on the engine during transport can lead to fuel leaks and carburetor damage.

Preventive Maintenance

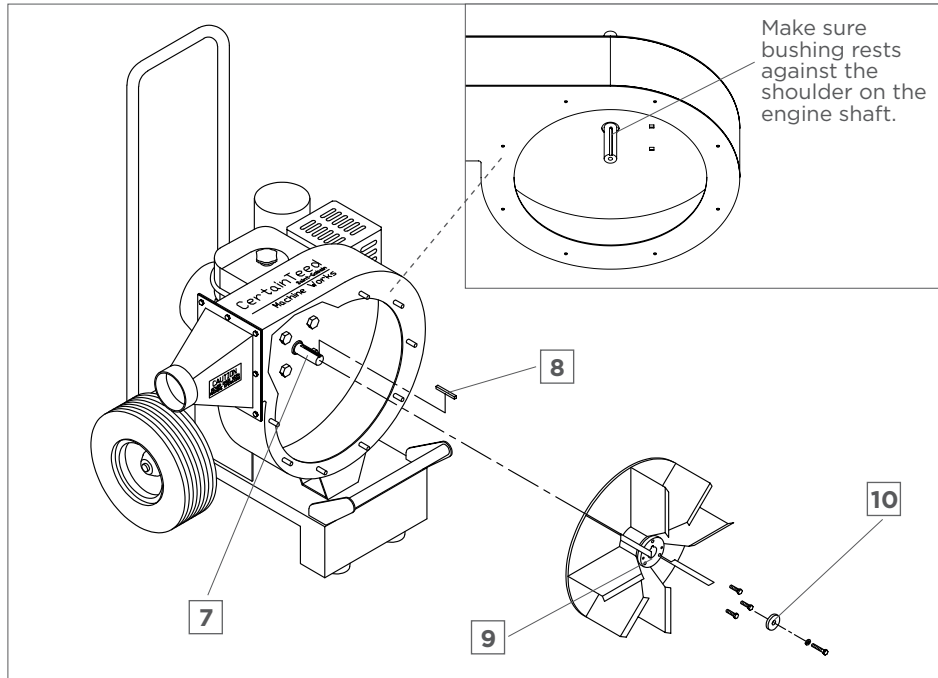


Follow the engine manufacturer's recommendations in the manual that accompanied this manual when the **VAC-MATIC™ 14** machine was first delivered. Check the oil level daily before start up. The battery is maintenance free. Keep battery cable connections tight, clean, and free of corrosion.

During normal operation of the **VAC-MATIC™ 14** machine, keep the engine, vacuum housing, and impeller clean of debris build up. Keep inlet safety door in good working condition.

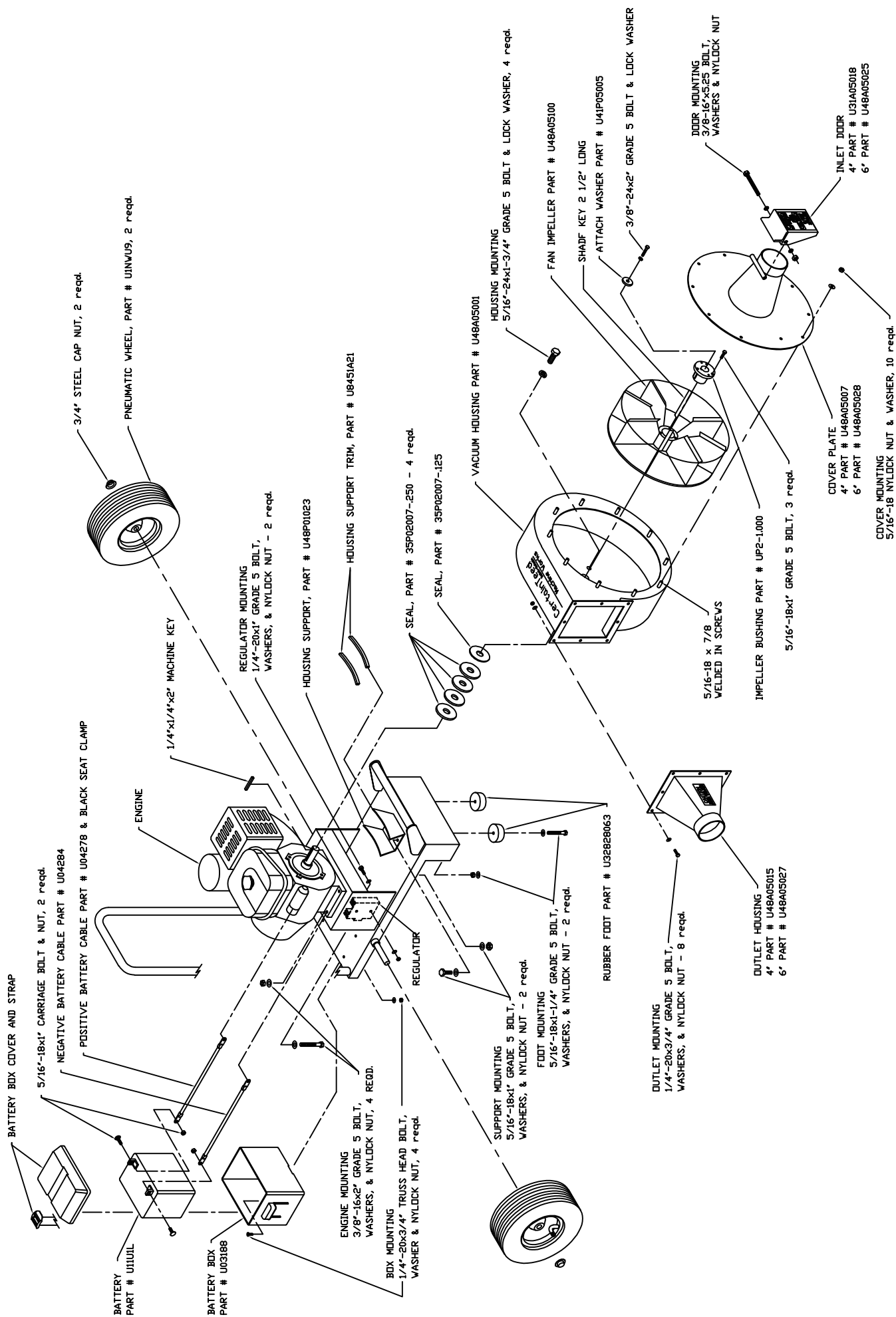
For any replacement of the impeller, use the following steps;

1. Remove front cover **10** from vacuum housing.
2. Remove washer and bolt **5** from engine shaft.
3. Remove the three bolts from the center bushing **6**.
4. Insert two of the bolts in the threaded holes and tighten alternating back and forth. This will push the impeller off the bushing. Slide busing off engine shaft and remove the old impeller from the housing.
5. Insert bushing into new impeller. Lubricate shaft with an anti-seize compound and slide onto engine shaft **7** up against the shoulder on shaft. The bushing should bottom out against the shoulder. Line up keyways on shaft and bushing and insert drive key **8**.
6. Insert the three bolts into the holes in the bushing and thread into the impeller hub **9**. Tighten the bolts using an alternating pattern and torque to 16 foot/pounds. Do not overtighten the bushing shoulder and impeller hub face.
7. Add attach washer **10**, lock washer, and bolt **5** to the end of engine shaft and torque to 30 foot/pounds.
8. Add cover back on housing and tighten all nuts.



Parts Drawings





CertainTeed Machine Works Blowing Equipment

LIMITED TWO-YEAR WARRANTY

CertainTeed Machine Works (the Company) warrants to each original purchaser (the Buyer) of its blowing equipment that such products will be free of manufacturing defects for a period of two years from the date of shipment to the Buyer, except that no warranty is made with respect to:

1. Components or accessories manufactured and warranted by others. Warranties for component parts, including but not limited to the engine, blower, gearbox, and transmission, if furnished by the manufacturer of the component, are on file at the Company's main office and copies will be furnished with the blowing equipment when sold. In no event shall the Company provide service on any such component.
2. Any defect caused by alteration performed without the express written authorization of the Company.
3. Repairs made or attempted or adjustments undertaken by unauthorized persons.
4. Any machine that has not been operated and/or maintained in accordance with normal industry practice and the written recommendations of the Company, such as a machine operated with an improperly sized, worn or damaged hose.
5. Damage or breakage due to carelessness, accidents, or improper use.
6. The results of any application or use of the blowing equipment.

This limited warranty does not extend to component parts that need to be replaced on a regular basis due to normal wear and usage, including but not limited to seals, feeder, shredder, auger, fuses, switches, clutches, hoses, shaft seals, chains, belts, sprockets, pulleys, bearings, cables, and batteries.

The Company's obligation under this warranty is limited to repairing or replacing (at its option) any part that is determined by the Company to have a manufacturing defect. The Company or an authorized repair facility will provide any required parts and labor to the Buyer. If the equipment must be returned to the Company for repair, all transportation costs shall be the Buyer's responsibility. The Buyer must obtain a Return Material Authorization (RMA) number from the Company before returning the equipment for repair.

This limited warranty is expressly in lieu of any other guarantees and/or warranties, oral or written, expressed or implied, including, without limitation, the implied warranty of merchantability and the implied warranty of fitness for a particular purpose. The company shall not under any circumstances be liable for any special, indirect, incidental or consequential damages of any kind, or economic loss, including damages to any building or its contents, or injury to any persons therein, loss of profits, revenue, or loss of equipment use, even if the company has been advised of the possibility of such damages or loss, or for any claim against the buyer by any other party.

This warranty is not transferable.

Any claimed defect for which the Company does not receive notice within the two-year warranty period is not covered by this warranty.

Maintenance Record

DATE

JOB DESCRIPTION

PERFORMED BY

[illegible]



CertainTeed

CEILINGS • DECKING • FENCE • GYPSUM • INSULATION • RAILING • ROOFING • SIDING • TRIM
101 Hatfield Road Winter Haven, Florida 33880-1325 863-294-3206 Sales: 800-237-7841 Fax: 863-294-6771 certainteed.com