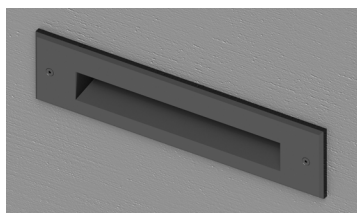


Passo RT

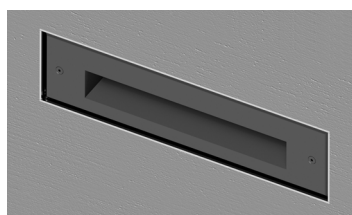
12" Directional LED Steplight



Surface Mount



Flush Mount



Features

The Passo family of luminaires includes high quality, architecturally relevant fixtures suitable for use in both outdoor or indoor applications. All members of the Passo family feature an independently sealed optical chamber and fully potted driver. These features are especially beneficial in exterior applications as they help compensate for the challenges in getting a good seal between a pre-installed back box and the faceplate, as well as those challenges in fully sealing the conduit system. Each luminaire is available in a choice of three output levels to help tailor the desired illuminance to the project and a standard 0-10V dimmable driver allows even further flexibility. A new option for flush mount faceplate has been added.

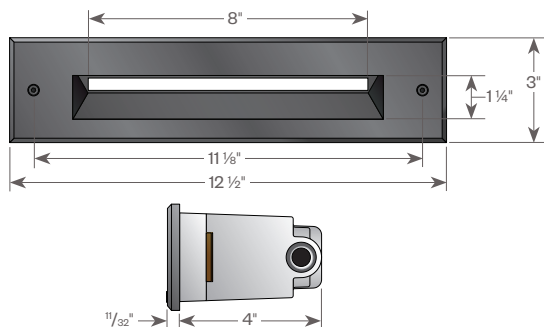
Product Overview

Type:	Stair & Pathway Lighting
Wattage:	up to 9W
Lumen Output :	up to 525 lm
Color Temp:	2700K, 3000K, 4000K, Amber
Dimming:	0-10V down to 10%

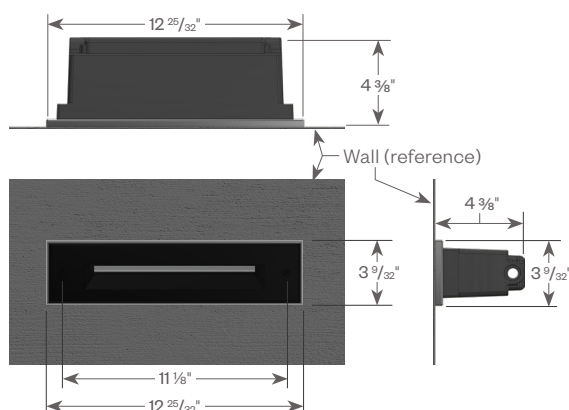
PROJECT:

TYPE:

Surface Mount



Flush Mount



Application:

Designed for new construction in brick, poured concrete, and hollow walls.

Construction:

- Electrical grade PVC housing
- Internal optical chamber
- Cast aluminum faceplate
- 1/8" tempered Solite™ lens

Driver:

- Drive Current (175, 350 or 700mA)
- 2.5kv surge protection
- Fully potted
- Input voltage 120V-277V auto-sensing
- 0-10V dimmable down to 10%

ETL listed, suitable for wet locations.

Optics:

Individually sealed optical chamber with neoprene gasket insures LEDs are secure independent of the installation of the back box.

Finish:

Premium quality thermoset polyester powdercoat faceplate for a durable finish.



Passo RT

12" Directional LED Steplight



PROJECT:

TYPE:

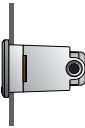

Luminaire Ordering Information

PRCD12 . . .

1 **2** **3**

1 <u>Model</u> PRCD12	3 <u>Finish</u> ANT - Anthracite Gray BLK - Satin Black CLB - Classic Bronze SLV - Silver WHT - White CSTM - Custom
2 <u>Performance Code</u> L27 - 2700K / 175mA L30 - 3000K / 175mA L40 - 4000K / 175mA H27 - 2700K / 350mA H30 - 3000K / 350mA H40 - 4000K / 350mA VH27 - 2700K / 700mA VH30 - 3000K / 700mA VH40 - 4000K / 700mA AL - Amber, Low AH - Amber, High	

Back Box¹ Ordering Information - Back Box must be ordered for a complete unit, ordered separately. Choose original surface mount box or new flush mount trim kit (recessed).

1	
1 <u>Model</u> RTBX-12 (surface mount) RTBX-12-FTK ² (flush mount trim)	 
	Surface Mount Flush Mount

Notes: 1. Back Box can be shipped ahead of the steplight, upon request.
2. Flush Mount Trim - Stainless steel trim for use with poured concrete and other surfaces to allow the front of the faceplate to sit flush with the finished surface. The trim forms a clean edge to define the boundary between the fixture and the wall material. Once installed, it can be painted to match the finished surface or left as unfinished stainless steel.

Optional Adaptor Plate Ordering Information (see pg 4 for details)

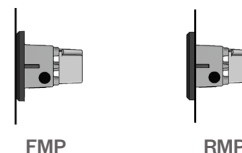
For retrofit applications using an existing wall box or cavity.

_____ x _____

1 **2** **3** **4**

1 <u>Model</u> FMP-PRCD12 - front mount adaptor plate RMP-PRC12 - rear mount adaptor plate	3 <u>Mounting Hole Location</u> CRN - corner (1 in each corner) CNT - center (2 on vertical center)
2 <u>Plate Size</u> _____ x _____ (W) (H) <div>W: 14" min - 22" max H: 4.5" min - 15" max</div>	4 <u>Finish</u> ANT - Anthracite Gray BLK - Satin Black CLB - Classic Bronze SLV - Silver WHT - White CSTM - Custom

Note: A signed approval drawing showing the requested dimensions will be required to process an order.



Note: Back box is NOT used with this optional plate.

Passo RT

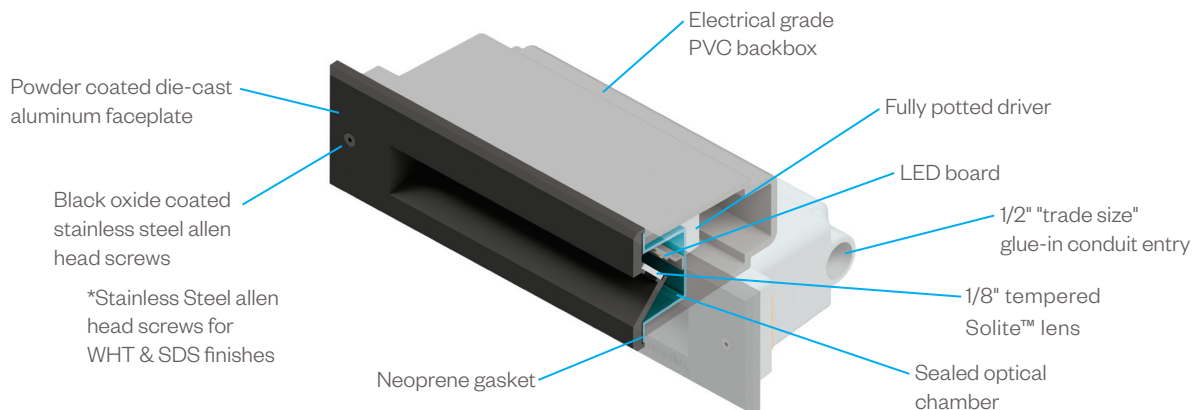
12" Directional LED Steplight



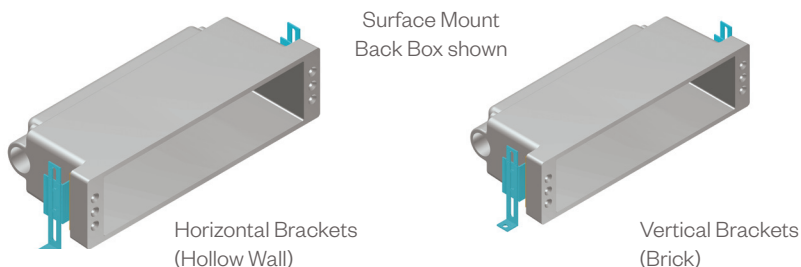
PROJECT:

TYPE:

Construction Detail

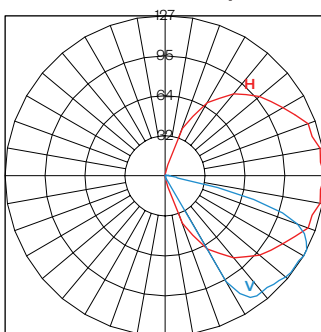


Application Brackets (included with order)



Performance Detail

PRCD12.L30 Polar Graph



Performance Code	CCT/CRI	Approx. Lumens	Drive Current	Nominal Input Power
L27	2700K/80	140	175mA	3W
L30	3000K/80	147		
L40	4000K/70	156		
H27	2700K/80	268	350mA	4.5W
H30	3000K/80	277		
H40	4000K/70	296		
VH27	2700K/80	475	700mA	9W
VH30	3000K/80	491		
VH40	4000K/70	525		

Amber Option

Model Code	Output
PRCD12-AL	450 mW
PRCD12-AH	1,233 mW

Note: IES files available on our website. For VHxx data - use Hxx ies files with a 1.77 multiplier.

Passo RT

12" Directional LED Steplight

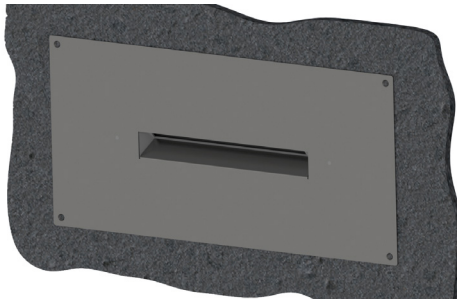


PROJECT:

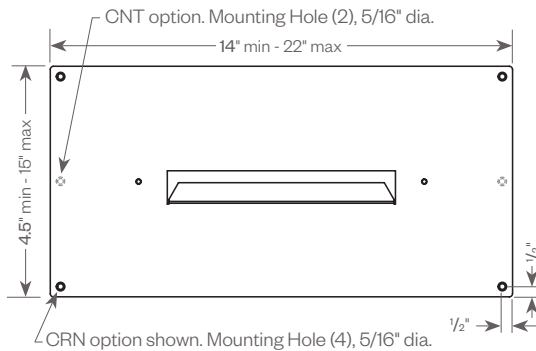
TYPE:

Adaptor Plate Detail

For retrofit applications using an existing wall box or cavity.

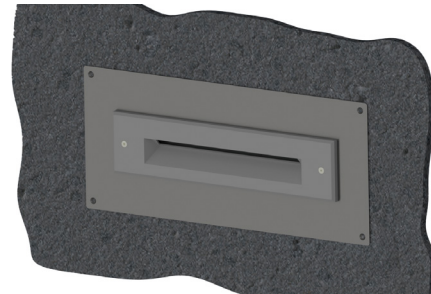
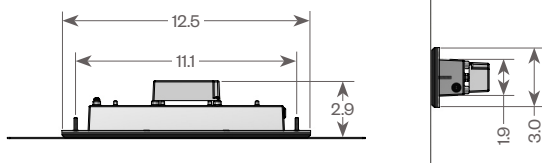


Front Mount Plate (FMP-PRCD12)

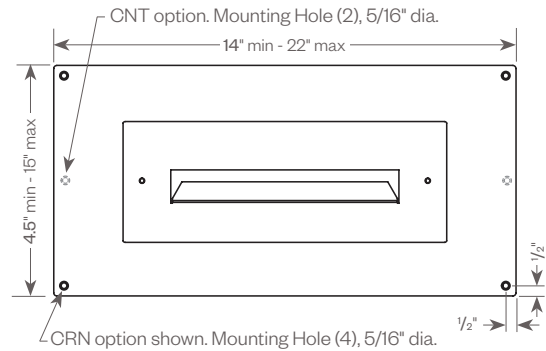


Standard dimensions from the corner are shown.
If alternate dimensions are needed, please specify.

Space required to mount fixture.



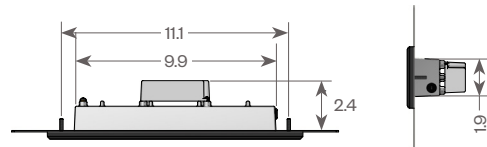
Rear Mount Plate (RMP-PRC12)



Standard dimensions from the corner are shown.
If alternate dimensions are needed, please specify.

EDR Required for dimensions beyond the range shown.

Space required to mount fixture.



Model		Plate Size		Mounting Hole Location		Finish	
1		2		3		4	

Note: A signed drawing will be required to process an order.

- 1 Model**
FMP-PRCD12 - front mount adaptor plate
RMP-PRC12 - rear mount adaptor plate

- 2 Plate Size**
 _____ x _____
 (W) (H)

W: 14" min - 22" max
 H: 4.5" min - 15" max

- 3 Mounting Hole Location**
CRN - corner (1 in each corner)
CNT - center (2 on vertical center)

- 4 Finish**
ANT - Anthracite Gray
BLK - Satin Black
CLB - Classic Bronze
SLV - Silver
WHT - White
CSTM - Custom