

WARNING - RISK OF FIRE AND ELECTRICAL SHOCK. FIXTURE MUST BE INSTALLED BY A QUALIFIED ELECTRICIAN ONLY. FIXTURE IS INTENDED FOR INSTALLATION IN ACCORDANCE WITH THE NATIONAL ELECTRICAL CODE, LOCAL AND FEDERAL SPECIFICATIONS. DISCONNECT POWER AT ELECTRICAL PANEL BEFORE SERVICING.

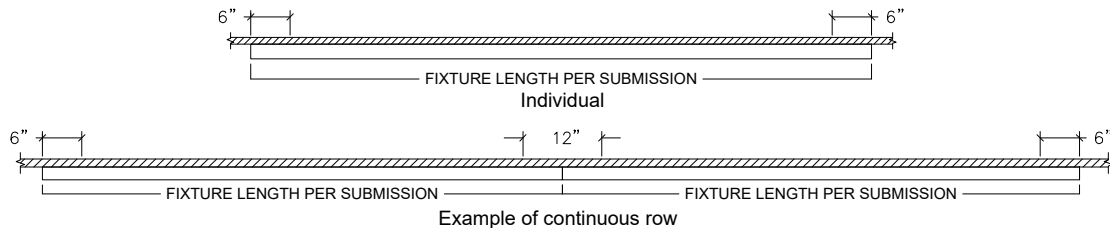
RETAIN THESE INSTRUCTIONS FOR MAINTENANCE REFERENCE.

Pre-installation Note:

Supplied by others: - feed conduits

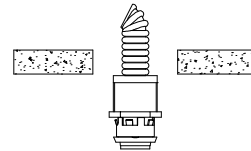
Supplied by Amerlux: - pre-drilled mounting points @ 6" from ends of fixture

Suggested suspension points for fixtures are:

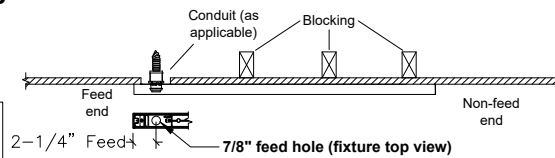
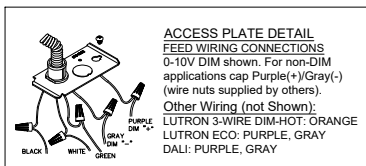


Refer to general contractor/ electrician layout for proper location of mounting points/ locations for feed conduits.

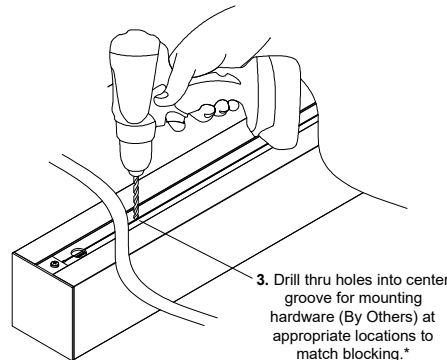
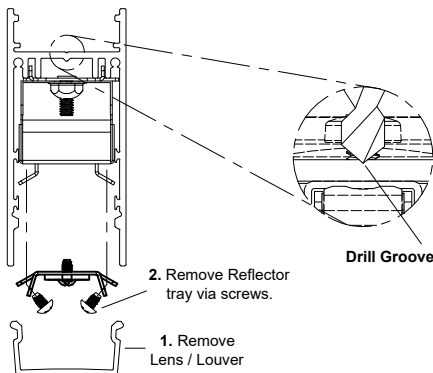
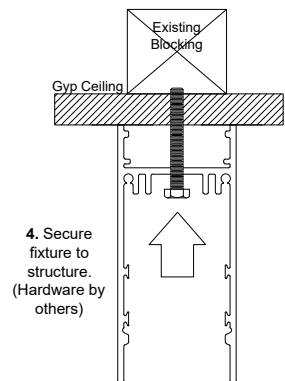
1. Install feed conduit(s) - Make sure fixture can sit flush with ceiling.



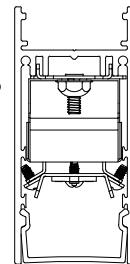
2. Individual and Beginning of Run Install-



Note - Fixture mounting points are pre-drilled 6" in from ends of fixtures. If alternate mounting points are req'd, drill & mount as necessary as shown here.

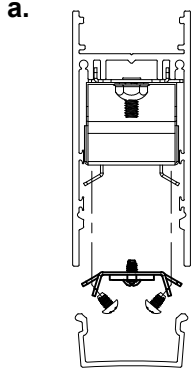


5. Re-assemble Fixture (IND Only. For Runs, continue to other side)

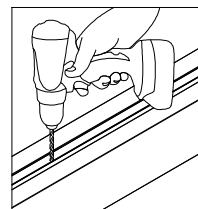


3. Hang Continuing Fixtures - After the BOR has been installed:

a.

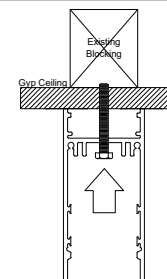
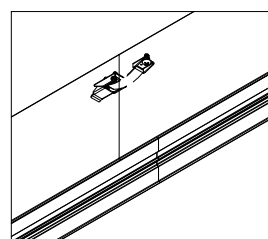
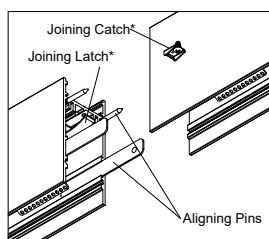


Prep Fixture for Mounting - Remove reflector tray assembly & drill holes in appropriate mounting locations if necessary (per contractor)*



b.

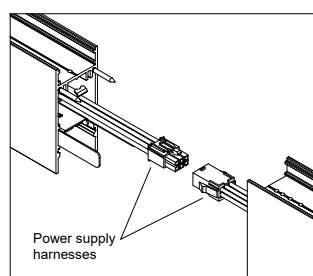
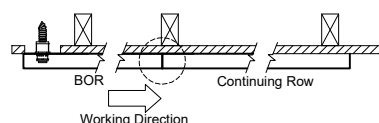
Join Fixtures Together - Use the aligning pins to engage and secure with Catch/Latch. Then secure to ceiling via mounting hardware (By others)



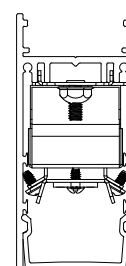
*Note: LIN1.5-WW does not use catch-latch or spline, only alignment pins. ENSURE TIGHT JOINT BETWEEN FIXTURES BEFORE SECURING ADJOINING FIXTURE TO BLOCKING.

c. Re-Assembly and Power -

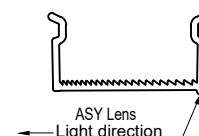
Install BoR reflector tray and connect power. Moving down the line (see working direction) connect the next tray to power and install. Repeat until End of Run.



Re-Assembled Section View



ASY LENS ONLY



For asymmetric distribution "bump" should be opposite the wall or direction of distribution

DISCONNECT ALL ELECTRICAL CONNECTIONS BEFORE SERVICING.

WARNING: Electrostatic and polarity sensitive device. Use caution while handling and wiring.

1.) LED Fixture:

Consult Amerlux for LED maintenance.

2.) LED Replacement:

For LED board replacement reference 689-0600 Instruction Sheet.

3.) Driver maintenance:

Drivers are located on tray beneath direct reflectors, (1) driver per tray, secured by (2) #8 pal nuts. Remove the reflector mounting screws to access. For **programmable** driver replacement please specify: **Manufacturer, Model No. and Current Setting** (mA). For drivers with **external** resistors, keep driver resistor value during driver maintenance or replacement.

See 710-0134 Wiring Schematic for more details.

