

H(m)	φ(m)	Lux Medi
5	6.8	0
4	5.5	0
3	4.1	0
2	2.7	0
1	1.4	0



CONSTRUCTIVE & DIMENSIONAL:

Application field:	Walkways and driveways, Passageways, Cycle paths, Gardens, Squares Extruded
Construction material:	aluminum EN AW-6063 T5 / die-casting alluminum EN-AB 44100
External screws:	Stainless steel A4-70 treated with highly antioxidant water-repellent lubricating solution
Diameter:	3.15" (8 cm)
Height:	23.6" (60 cm)

ELECTRICAL and LIGHTING SOURCE for MODEL: GH1253.BRXA300EN GH1253.BRX.A

Description:	1 x 12.9W LED / 3000K / CRI>90 1580 lm
Operating Power:	110-277 V / 50-60 Hz
Number of heads:	1
Number of Circuits:	1
Driver positioning:	Remote
Control gear type:	Electronic
Emergency kit:	Not available
Light source:	LED
Power:	12.9 W
LED voltage range:	18V
Courrent:	700 mA
ZVEI - Led Type:	COB
Color temperature:	3000 K
Binning:	Step MacAdam 3
Color rendering index:	CRI>90
Nominal LED emission:	1580 lm
Light source:	Included
Ambient temperature operating range:	-20 °C ÷ +35 °C

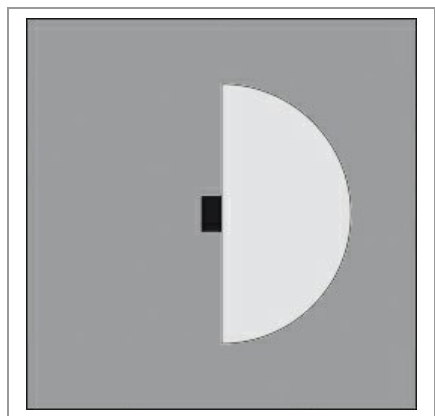
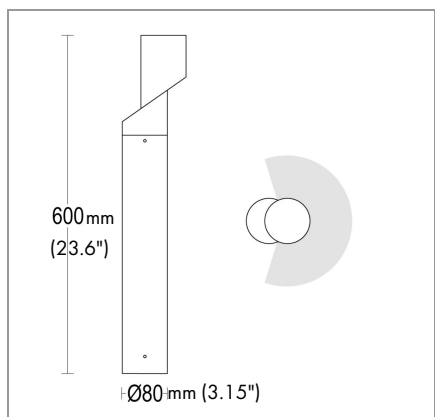
ELECTRICAL and LIGHTING SOURCE for MODEL: GH1253.BRXA400EN

Description:	1 x 12.9W LED / 4000K / CRI>90 / 1641 lm
Operating Power:	110-277V / 50-60 Hz
Number of heads:	1
Number of Circuits:	1
Driver positioning:	Remote
Control gear type:	Electronic
Emergency kit:	Not available
Light source:	LED
Power:	12.9 W
LED voltage range:	18V
Courrent:	700 mA
ZVEI - Led Type:	COB
Color temperature:	4000 K
Binning:	Step MacAdam 3
Color rendering index:	CRI>90
Nominal LED emission:	1641 lm
Light source:	Included
Ambient temperature operating range:	-20 °C ÷ +35 °C

sales@gordonbullard.com
www.bullardbollards.com
1-877-964-4646



991 South Gull Lake Dr
Richland, MI 49083
USA



H(m)	φ(m)	Lux Medi
5	6.8	0
4	5.5	0
3	4.1	0
2	2.7	0
1	1.4	0



ELECTRICAL and LIGHTING SOURCE for MODEL: GH1253.AHXA300EN GH1253.AHX.A

Description:	1 x 6 W LED / 3000K / CRI>90 / 845 lm
Operating Power:	110-277 V / 50-60 Hz
Number of heads:	1
Number of Circuits:	1
Driver positioning:	Remote
Control gear type:	Electronic
Emergency kit:	Not available
Light source:	LED
Power:	6W
LED voltage range:	18V
Current:	350 mA
ZVEI - Led Type:	COB
Color temperature:	3000 K
Binning:	Step MacAdam 3
Color rendering index:	CRI>90
Nominal LED emission:	845 lm
Light source:	Included
Ambient temperature operating range:	-20 °C ÷ +35 °C

ELECTRICAL and LIGHTING SOURCE for MODEL: GH1253.AHXA400EN

Description:	1 x 6W LED / 4000K / CRI>90 / 877 lm
Operating Power:	110-277 V / 50-60 Hz
Number of heads:	1
Number of Circuits:	1
Driver positioning:	Remote
Control gear type:	Electronic
Emergency kit:	Not available
Light source:	LED
Power:	6 W
LED voltage range:	18V
Current:	350 mA
ZVEI - Led Type:	COB
Color temperature:	4000 K
Binning:	Step MacAdam 3
Color rendering index:	CRI>90
Nominal LED emission:	877 lm
Light source:	Included
Ambient temperature operating range:	-20 °C ÷ +35 °C

OPTICAL:

Beam type:	Bollard [180° emission]
Light distribution:	Asymmetric
Beam directionability:	Fixed

FINISH CODE:

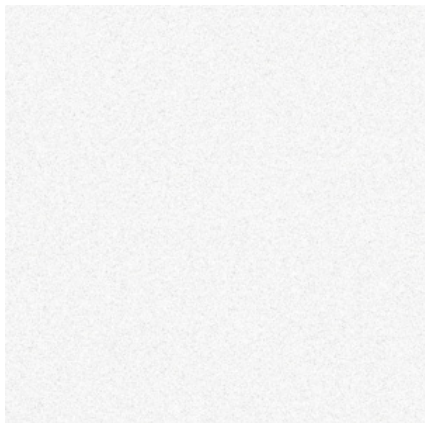
.05 Dark grey (matt)	.19 Light Grey
----------------------	----------------

ACCESSORIES:

IP 68 connector for through wiring AC279	IP 68 fast connector Small AC204	Plated steel anchorage Zac AC248



FINISH OPTIONS ON REQUEST:



.01 WHITE



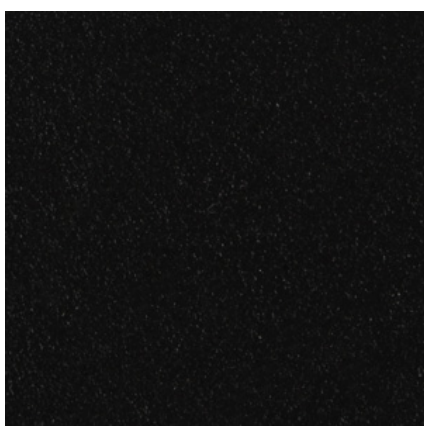
.05 ANTHRACITE GREY



.19 LIGHT GREY



.15 STAINLESS STEEL



.02 BLACK



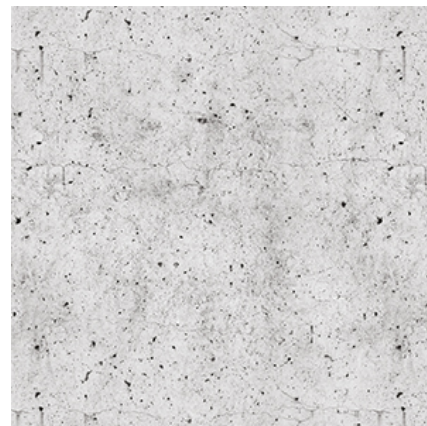
.32 OAK EFFECT



.45 RUST



.34 GLASS



.43 CONCRETE EFFECT