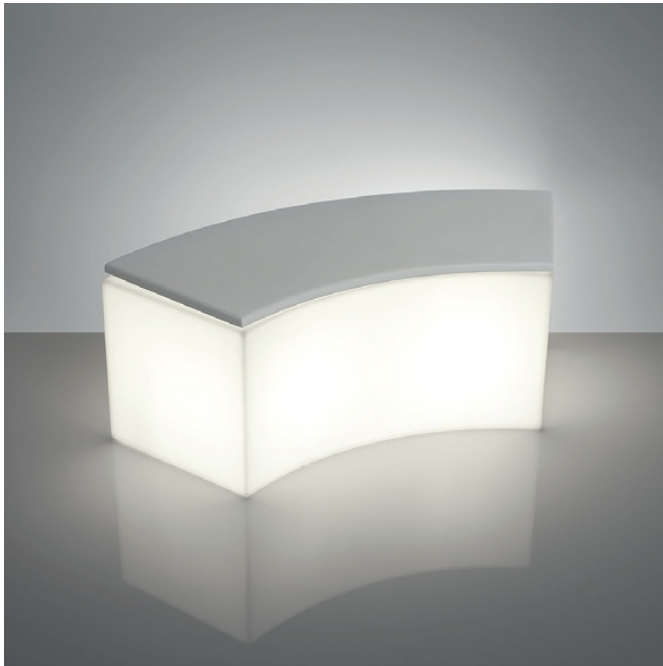


## SNAKE



### GENERAL INFORMATION:

Modular seat

Versions: standard, lighting.

Material: Polyethylene.

Dimensions: 123 x 53 h 43 cm

Weight: 11 Kg

Packaging: 54 x 44 x 121 cm

Packaging volume: 0,287 m<sup>3</sup>

Note: matching with the products Ypsilon and Privé.

Code SD SNK120 lighting IN  
(IP 20, only for indoor use\*)

Wiring with plastic base and LED CANDY LIGHT.IP44 protection.Diameter 10 cm  
SD SNF120 lighting OUT

(IP 55, for outdoor and indoor use\*)

Wiring with plastic base and LED CANDY LIGHT.IP44 protection.Diameter 10 cm  
SD SNK121 standard

(IP 55, for outdoor and indoor use\*)

SD SNK120 cushion

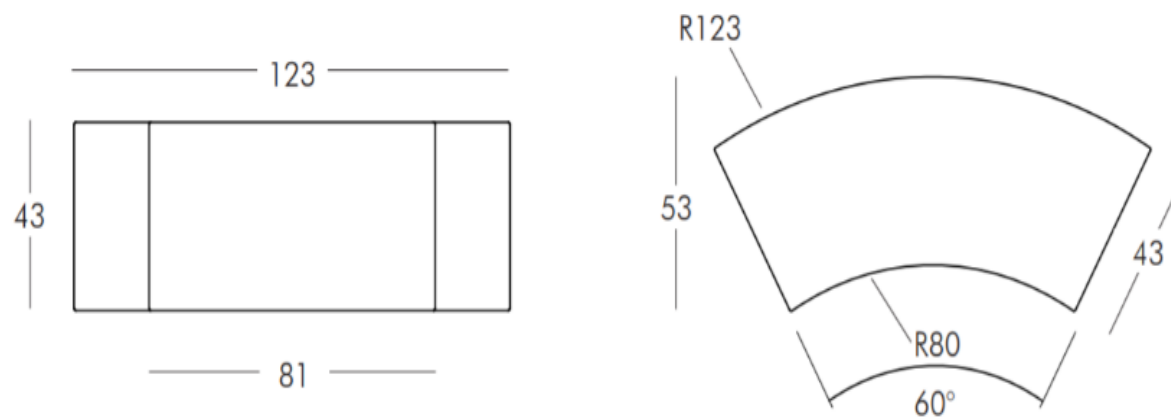
(IP 55, for outdoor and indoor use\*)

Standard lamp base for E26-27mm light bulb

Insulation class 2

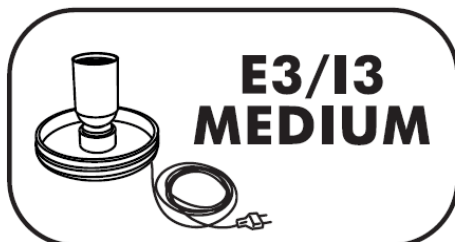
Device proper to direct assembly onto normally inflammable surfaces

### DIMENSIONS IN CM:



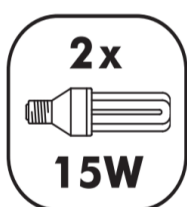
### LIGHTING:

1x



Wiring with plastic screw base.I3 - IP20 protection. E3 - IP55 protection.Diameter 10 cm.

2x



Energy saving bulbrecommended (not included).

## FINISHES:

## STANDARD

- MILKY WHITE (code FT)
- JET BLACK (code FH)
- ELEPHANT GREY (code FG)
- CHOCOLATE BROWN (code FE)
- ARGIL GREY (code FJ)
- DOVE GREY (code FP)
- POWDER BLUE (code FL)
- MALVA GREEN (code FV)
- LIME GREEN (code FR)
- SAFFRON YELLOW (code FB)
- PUMPKIN ORANGE (code FC)
- FLAME RED (code FD)
- SWEET FUCHSIA (code FU)

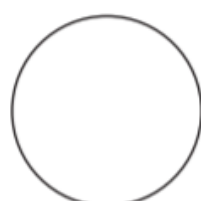
## LIGHTING

- LIGHT WHITE (code LA)

## OUTDOOR CUSHION DETAILS:

material: polyurethane

colours available:



SOFT WHITE (code PA)



SOFT GREY (code PI)



DARK ANTHRACITE (code PG)