

## PRODUCT SPECIFICATIONS

Elkay® 8" Centerset Deck Mount Laminar Flow Faucet w/5"  
Gooseneck Spout 2in Lever Handles 1/2" Offset Inlet Chrome.  
Faucet has a flow rate of 1.5 GPM, and is made of Chrome-plated  
Brass material, with a Quarter Turn Ceramic Disc valve. Faucet  
requires 2 faucet holes.

|                                |   |
|--------------------------------|---|
| <b>Mounting Type:</b>          | Wall Mount  |
| <b>Special Features:</b>       | 1/2" Adjustable Inlets<br>Low Flow<br>Solid Brass Construction<br>Spout Swing Restriction Pin |
| <b>Finish:</b>                 | Chrome (CR)   |
| <b>Handle Type:</b>            | 2" Lever Handle   |
| <b>Deck Clearance:</b>         | 7-3/8"  |
| <b>Spout Reach:</b>            | 5-1/8"  |
| <b>Spout Height:</b>           | 11"   |
| <b>Hole Drillings:</b>         | 2   |
| <b>Material:</b>               | Chrome-plated Brass   |
| <b>Valve Type:</b>             | Quarter Turn Ceramic Disc   |
| <b>Valve Connection:</b>       | 1/2" NPT Female   |
| <b>Flow Rate:</b>              | 1.5 GPM   |
| <b>Faucet Hole Size (min):</b> | 1-1/2"  |
| <b>Faucet Hole Spread:</b>     | 8   |
| <b>Spout Type:</b>             | Gooseneck   |

**Special Note:** 1.5 GPM VR aerator installed with 2.2 and .5 GPM  
inserts included



Chrome  
(CR)



A Century of Tradition and Quality.

For more than 100 years, Elkay has been making innovative  
products and providing exceptional customer care. We take pride in  
offering plumbing products that make life easier, inspire change and  
leave the world a better place.

**Product Compliance:** ADA & ICC A117.1  
ASME A112.18.1/CSA B125.1  
CEC  
NSF 372 (lead free)  
NSF 61 (Q≤1)

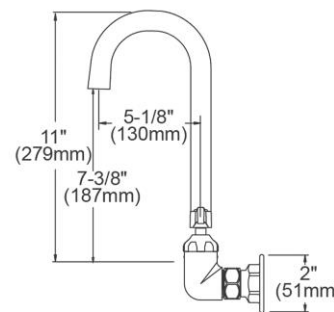
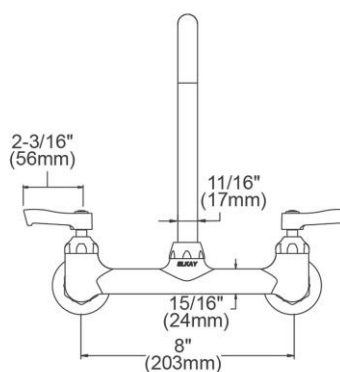


C



Complies with ADA & ICC A117.1 accessibility requirements  
when installed according to the requirements outlined in these  
standards.

[Clean and Care Manual \(PDF\)](#)  
[Installation Instructions \(PDF\) - A55483](#)  
[Warranty \(PDF\)](#)



PART: \_\_\_\_\_ QTY: \_\_\_\_\_

PROJECT: \_\_\_\_\_

CONTACT: \_\_\_\_\_

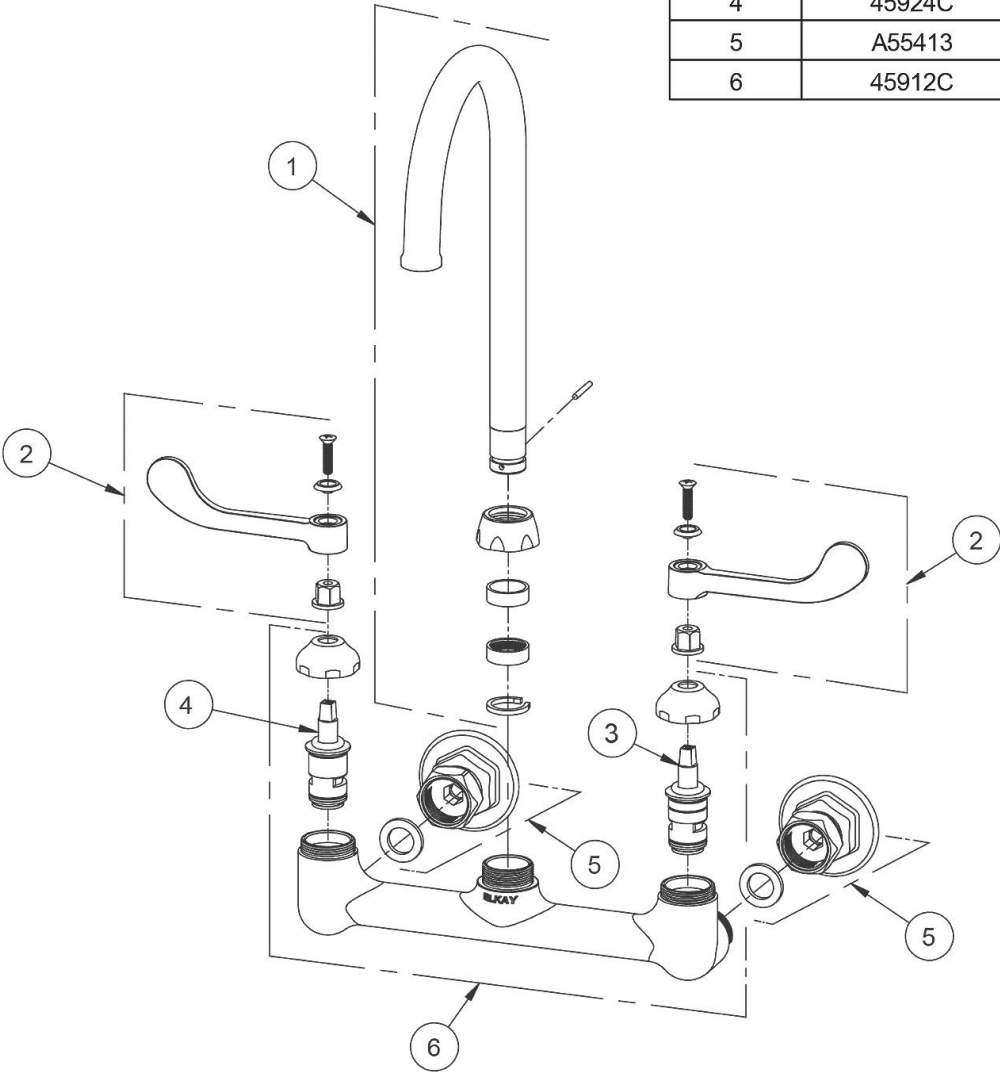
DATE: \_\_\_\_\_

NOTES: \_\_\_\_\_

APPROVAL: \_\_\_\_\_

*In keeping with our policy of continuing product improvement, Elkay reserves the right to change product specifications without notice. Please visit [elkay.com](http://elkay.com)  
for the most current version of Elkay product specification sheets. This specification describes an Elkay product with design, quality, and functional benefits to the  
user. When making a comparison of other producers' offerings, be certain these features are not overlooked.*

| ITEM | IND. PART  | DESCRIPTION           |
|------|------------|-----------------------|
| 1    | 1000002619 | Spout                 |
| 2    | 45918C     | Handle, 2"            |
| 3    | 45923C     | Right Cold Cartridge  |
| 4    | 45924C     | Left Hot Cartridge    |
| 5    | A55413     | 1/2" Adjustable Inlet |
| 6    | 45912C     | Body                  |



*In keeping with our policy of continuing product improvement, Elkay reserves the right to change product specifications without notice. Please visit [elkay.com](http://elkay.com) for the most current version of Elkay product specification sheets. This specification describes an Elkay product with design, quality, and functional benefits to the user. When making a comparison of other producers' offerings, be certain these features are not overlooked.*