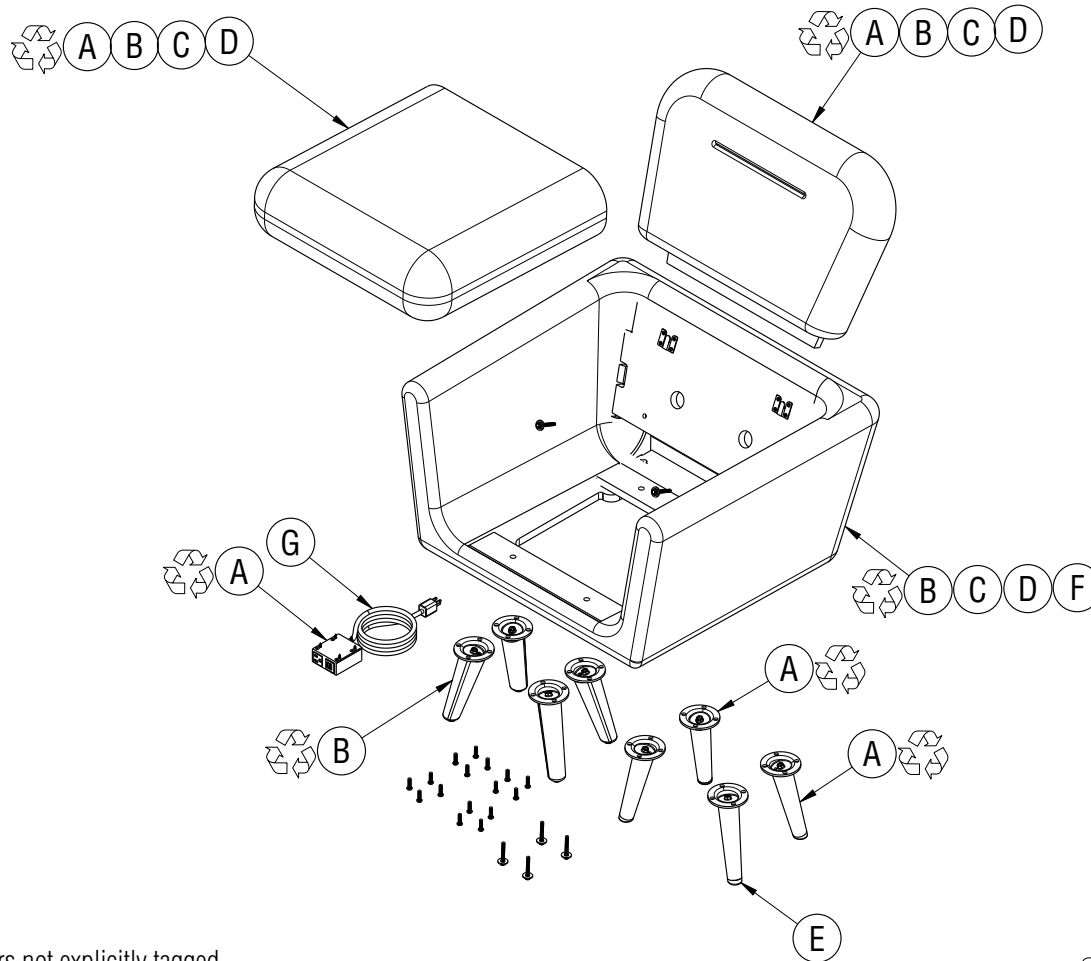


Disassembly Instructions

Gladly Lounge Seating

Material Type: A. Steel B. Wood C. Fabric D. Foam E. Plastic F. Cardboard G. Other



Procedure:

1. Remove screws, washers and brackets attaching legs, seat and backrest to frame and remove legs, seat and backrest.
2. Remove screws attaching electrical accessories (if present) and remove accessories.
3. Cut fabric from seat, backrest and frame and remove. Scrape off foam from seats and frame.
4. Remove any metal springs, clips and fasteners from seats and frame.
5. Remove webbing and cardboard from frame.
6. Pry or unscrew glides from legs depending on glide type. Plastic feet may be separated from the steel stem if applicable. Unscrew mounting plates from legs.
7. Electrical accessories may be broken down into metal housing, wire and internal components

General Notes:

1. Disassembly time: 45 - 60 minutes
2. This procedure assumes basic familiarity with hand tools and furniture terminology: no specialized training is required
3. All materials removed and disassembled shall be sorted and segregated with like materials and disposed of or recycled according to recycling availability or waste acceptance
4. For items to be recycled, refer to KI's End of Life Recycling Matrix and KI's End of Life Recovery Options Matrix, available at www.ki.com

All fasteners not explicitly tagged are Material Type A: Steel

Required Tools

