

Assembly Instructions ■

Trek® Tables

Flip-Top Table

June 2012

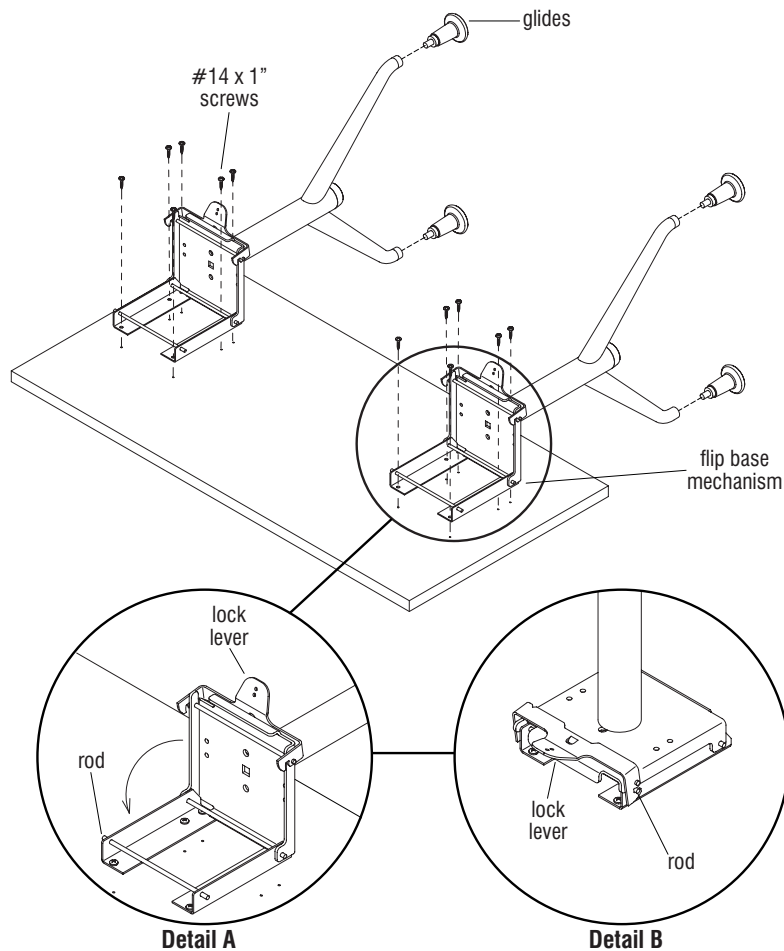


Figure 1

Tools Required

- Phillips Screwdriver
- $\frac{3}{16}$ " hex wrench (Allen wrench)
- $\frac{3}{8}$ " wrench
- $\frac{7}{16}$ " wrench

Hardware

- Twelve #14 x 1" screws
- Four $\frac{1}{4}$ -20 x $\frac{1}{2}$ " Socket Head Cap Screws with patch
- Four $\frac{1}{4}$ -20 Nuts
- Two #10-32 x $\frac{1}{2}$ " Phillip Head Pan Heads Screws with locking washer
- Two #10-32 Cap Nuts

Base Installation

1. Unpack table bases and table top.
2. To avoid scratching the table top, place it finish side down on a soft protective material.
3. Unlock and open flip base mechanisms, position base assemblies on underside of table top, aligning holes in base assemblies with pre-drilled holes in table top. Attach each base to the top using four #14 x 1" screws in the four front holes (Figure 1 & Detail A).
4. Close flip-top mechanisms by pulling base to a vertical position. Bases are secure when lock level engages rod (Detail B).
5. Finally, insert and tighten two #14 x 1" screws to the back of bases, Insert glides into base feet and stand table upright (Figure 1).

Note: Two people are required to turn table to the up-right position.

■ Trek® Table - Flip-Top Tables

Assembly Instructions



Assemble units as described herein only. To do otherwise may result in instability. All screws, nuts and bolts must be tightened securely and must be checked periodically after assembly. Failure to assemble properly, or to secure parts may result in assembly failure and personal injury.

Cross Tube Assembly

6. With table upright, disengage flip mechanisms and flip table top up until it stops (Figure 2).
7. Position cross tube under the opened table bases as illustrated. The large holes in the cross tube should face the floor. Using a $\frac{3}{16}$ " hex wrench (Allen wrench) insert $\frac{1}{4}$ -20 x $\frac{1}{2}$ " cap screw into the large hole in the cross tube, align and insert the screw in a hole in the flip base lower plate. From the top, attach $\frac{1}{4}$ -20 cap screw to the nut and screw finger tight to hold it to plate. Install other screws and nuts to cross tube and base plates. Tighten hardware securely (Detail D).

Handle To Lock Levers Assembly

Note: Without handle installed it will take two people to flip table open.

8. Position a handle over the lock levers as illustrated, with the rib side up. Insert a #10-32 screw with washer into a hole in the handle and through the bottom hole in a base lock lever. Attach a #10-32 nut to the screw finger tight. Insert the other screw with washer through the other handle hole and bottom base lever hole and attach nut. Using a Phillips screwdriver and $\frac{3}{8}$ " wrench tighten screws and nuts securely (Detail C).

9. Grasp table top firmly and lower into place, press down on top to lock it into place.
10. Lift up slightly on front edge of top to ensure it is locked in place. Apply more down ward pressure if it is not engaged.
11. Table should lock and unlock easily. Loosening and re-adjusting the cross tube and handle may be required to obtain a smooth operation (Detail D).

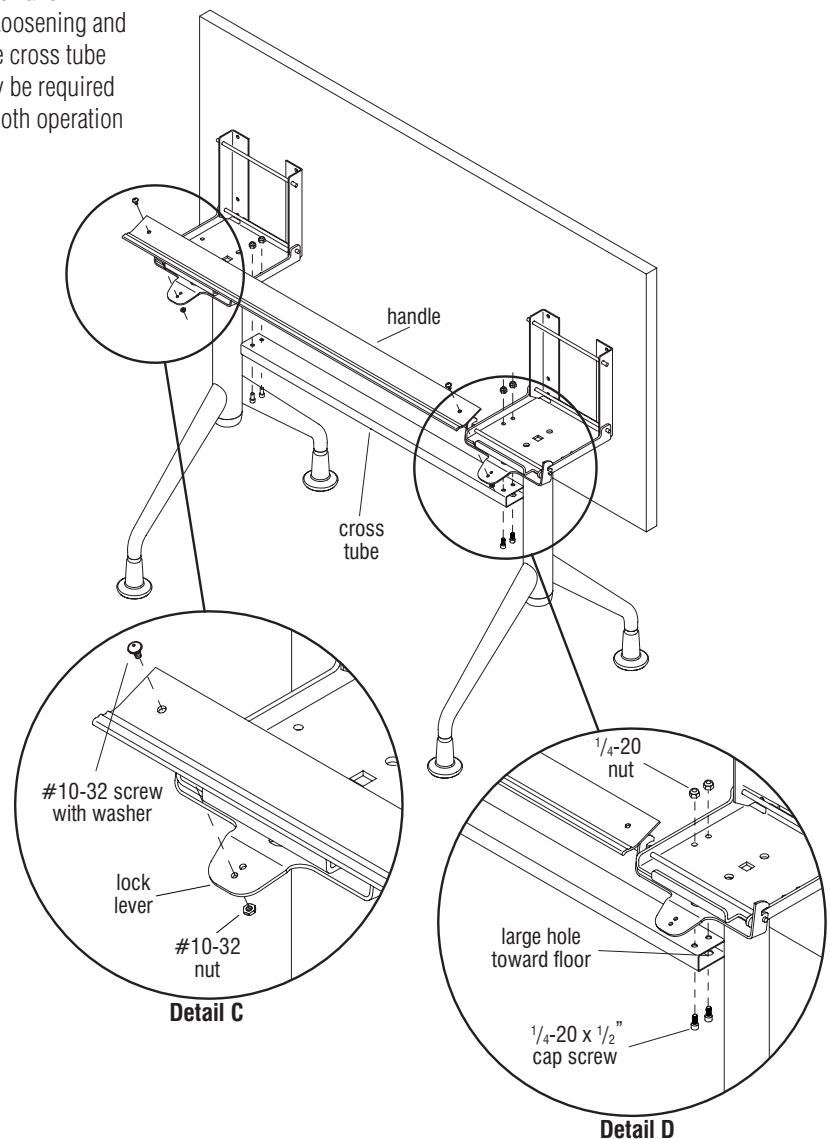


Figure 2



Assemble units as described herein only. To do otherwise may result in instability. All screws, nuts and bolts must be tightened securely and must be checked periodically after assembly. Failure to assemble properly, or to secure parts may result in assembly failure and personal injury.

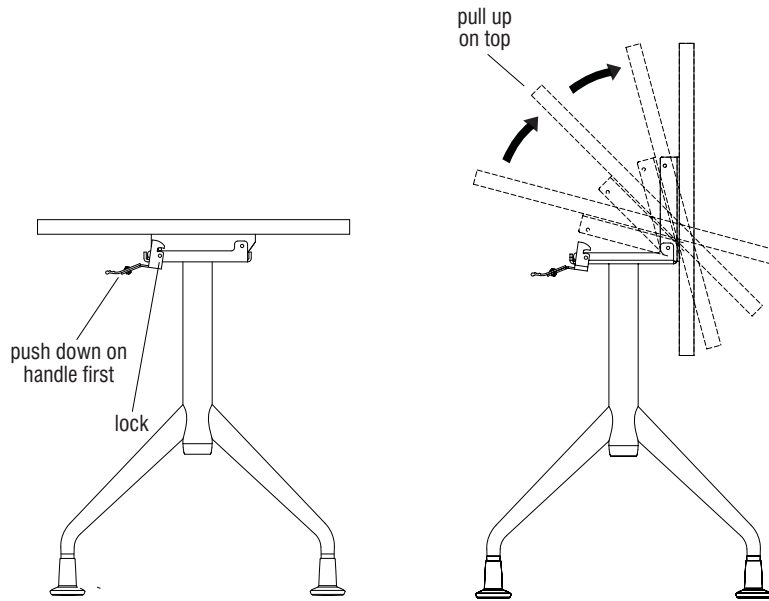


Figure 3

Operating Instructions For Storage

1. To rotate into storage position push down on the handle and lift top up until it stops (Figure 3).

For Use

1. Grasp table top firmly, lower into place and press down on front edge to lock the table top into place (Figure 4).
2. Lift up slightly on front edge of top to ensure it is locked in place. Apply more down ward pressure if it is not engaged (Figure 4).

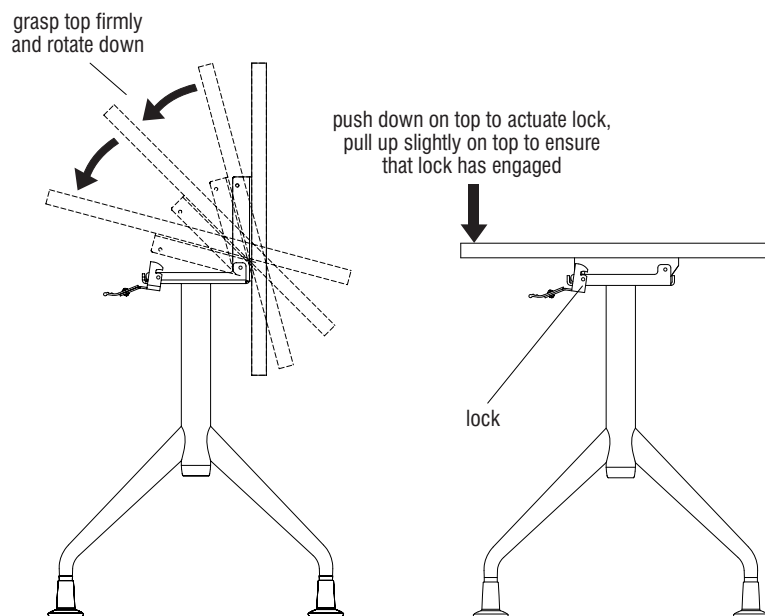


Figure 4

1330 Bellevue Street • P.O. Box 8100 • Green Bay, WI 54308-8100 • Tel 1-800-424-2432 • www.ki.com

© 2012 KI All Rights Reserved • Litho in USA • Code KI-62455/KI/GT/0612

