

SPECIFICATION GRADE LINEAR HIGH BAY

ENDEAVOUR 2.0



*Built by American hands in Sanford, FL*



# WHY ENDEAVOUR 2.0?

EDV 2.0 is the linear high bay of the future. Sturdy - but sleek, it features an aluminum body with curved end caps in white, black or custom finishes to suit even the most unique project aesthetics.

**IP5X  
RATING**

EDV 2.0 is highly selectable - with impact resistant and IP5X rated lens options, controls, CCT and lumen packages, and more.

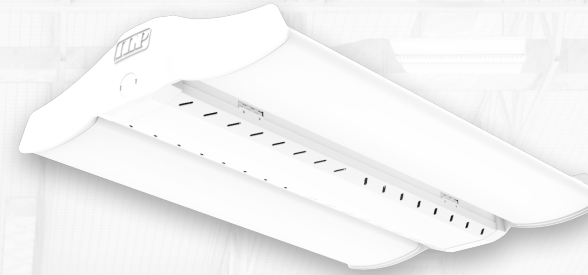
A BAA product - made right here in our Sanford, FL facility by hard-working Americans. Save energy, and money when you lift off with EDV 2.0.



# HOUSING LENGTHS

## 2FT HOUSING

- 8,000 - 36,000 lm
- 20'—50' Mounting Height
- Replaces 750W MH, 8T5HO



## 4FT HOUSING

- 12,000 - 100,000 lm
- 20'-70' Mounting Height
- Replaces 1000W MH, 12T5HO

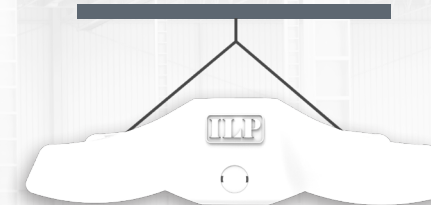


# MOUNTING OPTIONS

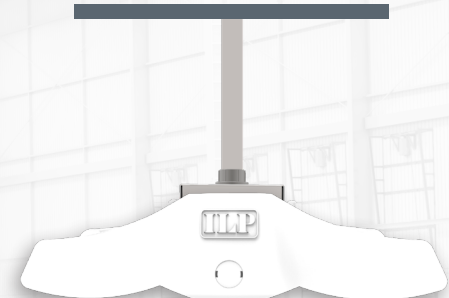
## SURFACE



## SUSPENDED



## PENDANT



Endeavour 2.0's diverse mounting options allow for multitudes of design opportunities in a variety of applications with high ceilings at varied heights

GYMNASIUMS | MANUFACTURING PLANTS | WAREHOUSES | DISTRIBUTION CENTERS  
HANGARS | RETAIL | GOVERNMENT FACILITIES | AUTO SERVICE BAYS/LANES





# AMERICA'S HIGH BAY

## LUMENS

- 17 Lumen Package Configurations
- 2ft: 8,000 – 36,000 lms
  - 4ft: 12,000 – 100,000 lms

## EFFICACY

Up to 164 lm/W

## FINISHES

- Black
- White
- Custom

## END CAPS

Sleek curved polycarbonate injection molded end caps

## LENS OPTIONS

IP5X RATING

- IP5X Rated Dust Resistant
- Frosted Acrylic
  - Frosted Polycarbonate
  - Polycarbonate Lens

## CONTROLS

- ADVANCED
  - EasySense
  - Enlighted
  - Leviton
  - Synapse
  - Autani
- BASIC
  - Legrand
  - On/Off
  - Dimming
  - Daylight Harvesting

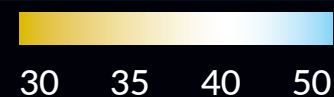
## BATTERY

Wide Range of Battery Backups from 5W-25W

## UPLIGHT OPTIONS

- 2,000 - 4,000 lm

## CCT



## AMBIENT RANGE

-40° - +55°C with High Temp Models up to 65°C



## TOOLLESS HINGED DRIVER DOOR

## DISTRIBUTION

Wide & Narrow Distribution Optics in all lumen packages

## BAA

American Made Aluminum Housing with Steel Center Channel for Maximum Rigidity



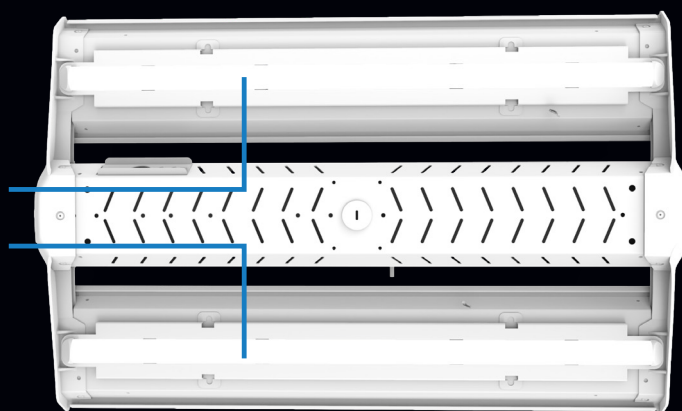


## HIGH BAY OF THE FUTURE

Endeavour 2.0 is the most versatile American Manufactured Linear High Bay fixture on the market today. Offering specification design and performance, making it the top choice for any unique, custom projects.

### UPLIGHT

- Uplight feature enables an additional layer of lighting to optimize full room illumination by reducing the contrast between the luminaire and the ceiling, eliminating the “cave” effect
- Encapsulated polycarbonate lenses with dedicated LED boards provide optional uplight from 2,000 – 4,000 lumens in both 2’ & 4’ Models
- Secondary drivers allow for independent on/off and 0-10V dimming control



### SLEEK POLYCARBONATE INJECTION MOLDED END CAPS

Provides a modern finish, rigidity, and durability

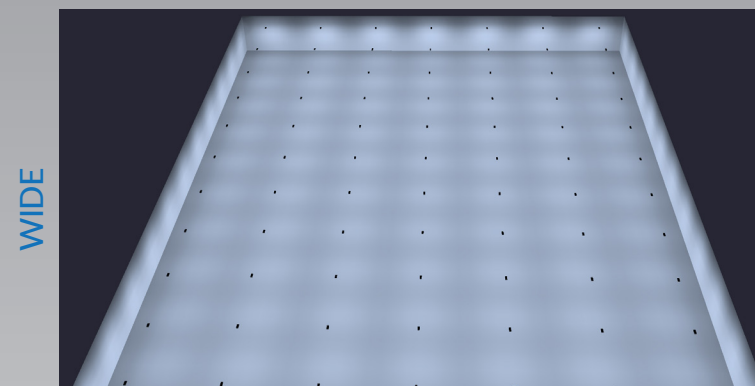
### FINISH OPTIONS

Black and white comes standard with custom color finishes also available



## WIDE & NARROW DISTRIBUTION

Choosing the proper optical distribution is key to the design of any space, impacting illumination, installation and even project costs. Endeavor 2.0 makes that choice easy, offering both wide and narrow distribution performance options to optimize the design of the space while fulfilling your unique project needs.



WIDE

Wide distribution optics are ideal for large, open areas such as gymnasiums, manufacturing plants, warehouses and distribution centers. They allow you to cover more space with fewer luminaires, reducing overall project costs.

#### BENEFITS INCLUDE

- High coverage allowing for broader luminaire spacing
- Excellent uniformity
- Low glare and UGR rating with prismatic frosted acrylic lens option



NARROW

The narrow distribution optics align light along the length of the luminaire, allowing for superior vertical illumination in areas such as aisles or assembly zones.

#### BENEFITS INCLUDE

- High targeted vertical racking illumination
- Excellent uniformity across horizontal and vertical planes
- Highest aisle foot candles in its class
- Low glare and UGR rating with prismatic frosted acrylic lens option



# LED SYSTEMS INFO

Housing Length	2 FT							4 FT									
Lumen Packages	8L	12L	15L	18L	24L	30L	36L	12L	15L	18L	24L	30L	36L	48L	60L	75L	100L
Calculated L70	> 100,000 Hours							> 100,000 Hours									
Delivered Lumens	8,410 lm	12,220 lm	15,776 lm	20,233 lm	24,478 lm	31,722 lm	35,430 lm	12,951 lm	16,446 lm	20,742 lm	24,659 lm	31,697 lm	37,533 lm	49,413 lm	63,394 lm	72,380 lm	96,756 lm
Total Input Watts	53 W	84 W	104 W	133 W	163 W	213 W	248 W	84 W	104 W	133 W	159 W	212 W	248 W	328 W	425 W	482 W	644 W
Efficacy (LER)	159 lm/W	146 lm/W	152 lm/W	152 lm/W	150 lm/W	149 lm/W	143 lm/W	155 lm/W	158 lm/W	156 lm/W	155 lm/W	149 lm/W	152 lm/W	151 lm/W	149 lm/W	150 lm/W	150 lm/W
CRI	>80							>80									

## HIGH AMBIENT TEMPERATURE

- STANDARD AMBIENT TEMP RANGE

-40° - +55°C (-40° - +131°F)
- HIGH TEMP OPTION AMBIENT RANGE

-40° - +65°C (-40° - +149°F)
- HIGH TEMP MODEL LUMEN PACKAGES

8,000 - 100,000 Lumens



## CONTROL OPTIONS

ILP partners with industry-leading control companies that provide highly scalable and innovative lighting solutions. By integrating advanced software applications, sensors, and connected devices directly into our performance luminaires, you can fully control spaces while reducing energy costs, improving occupancy comfort, perceived safety and more.



### BASIC CONTROLS

- Endcap Mounted Stand Alone Sensor
- Sensor Mounted Bluetooth Stand Alone Sensor

### GROUPABLE CONTROLS

- Autani Lite
- Easysense
- Leviton
- Enlighted One

### NETWORK CONTROLS

- Autani
- Enlighted CL
- Synapse
- Enlighted IOT



# ENDEAVOUR 2.0



"Your Number One Source  
For Energy Efficient Lighting"