

PRODUCT SPECIFICATIONS

Dean® & Nacre® In-Surface Pop-Up Power Modules

Data Adapter Bracket Tree

November 2021

TECHNICAL SPECIFICATIONS

Data Adapter Bracket Tree

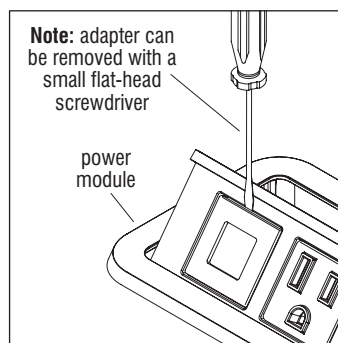
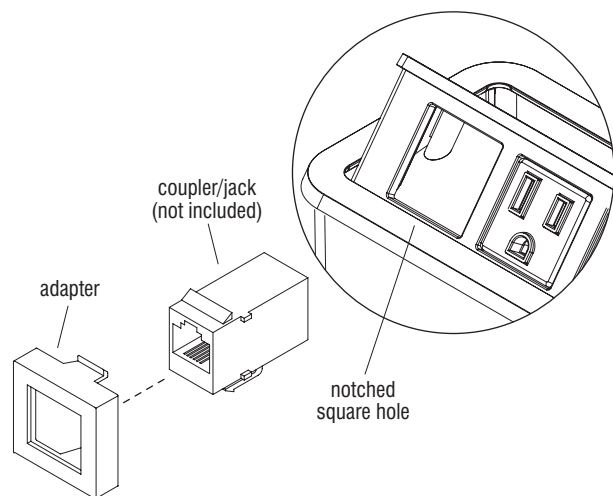
Select the appropriate adapter for the jack (see chart below) and carefully remove from the injection-molded tree. For example: HDMI Adapter Cable would use "BBB" adapter as marked on back of adapter). Jacks are sold by separate companies and not supplied with the module, UL listed (DUXR) or Recognized (DUXR2) jacks required.

Adapter	Manufacturer	Website
BBB*	L-Com Keystone Modular	www.L-Com.com
BBB*	NETCONNECT, and 110 Connect Series Modular Jack	www.Anixter.com
BBB	Siemon ZMAX Style	www.Siemon.com
BBB*	Allen Tel Versa Tap Series	www.Graybar.com
BBB*	Leviton Quick Port® Series	www.Leviton.com
BBB*	Belden REVConnect	www.Belden.com
BBB	HDMI Adapter Cable	www.Byrne.com
CCC	Hubbell Nextspeed™ Keystone Series	www.Hubbell-premise.com
CCC	ADC Truenet Series	www.Anixter.com
DDD	Blank (no coupler/jack)	
EEE	Ortronics TracJack Series	www.Ortronics.com
FFF	Panduit Mini-Com Series	www.Panduit.com
HHH	Video Monitor Jack/DB-15, panel mount solder style	www.Byrne.com

*Not supported in Nacre power modules.

Note: Please verify fit of jack in adapter before ordering large quantities, as manufacturer designs may change without notice.

Snap jack into adapter following the instructions provided with the jack. Once assembled, snap adapter into the notched square hole in the orientation shown.



Adapter Removal

