

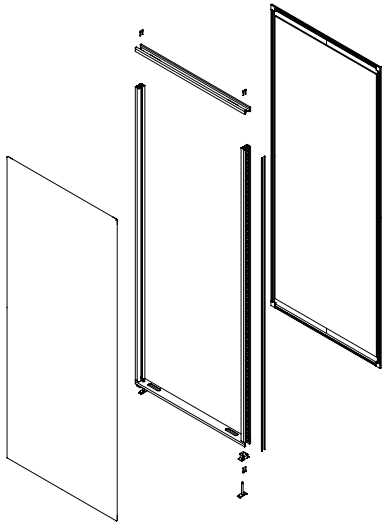
PRODUCT SPECIFICATIONS

Evoke® Architectural Wall

August 2024

Evoke Wall Highlights

- Bolted panel connection
- Backed steel shell construction
 - Highly durable solid feel
 - Low expansion/contraction allows tight seams
- Tight seams create soft, unnoticeable lines
- Continuous floor channel allows for optimum seismic anchoring
- Movable and reconfigurable
- Extremely fast installation and reconfigurations
- 93-99% recyclable (dependant on finish) and SCS Indoor Advantage™ Gold certified
- 50 STC for solid panels...highest in the industry
- Removable skins to connect panels, change aesthetic or to access power/cabling
- Unitized - installs as panels not pieces
- Engineered to replace drywall
- Made in the USA (Manitowoc, WI)



COMPONENTS & MATERIALS

Aluminum Extrusions

- Internal framework, ceiling track and 4" (101.6mm) overlapping base, continuous floor channel
- 6063-T6 and structural aluminum alloy

Finishes

- Powder-coated, 22-gauge steel
- High volume white powdercoat lowers cost
- Can be field painted
- Inkjet images available
- Markerboard panel shells: erasable steel
- Color selection per manufacturer's standard range
- Custom paint color matches (client approval required)

PVC Components

- Mushroom connection of panel face to aluminum framework
- Trim clips



KIWAAL

PRODUCT SPECIFICATIONS (CONTINUED)

Available Substrates

- 1/4" Gypsum-backed, 22-gauge steel (50 STC)

Insulation

- Formaldehyde-free, fiberglass insulation installed in the factory in the frame and in the top distance channel. Base insulation to be field installed in base cavity prior to base trim installation
- Recycled cotton insulation available as an upcharge

Base Track

- Overlapping aluminum base
- Steel leveler assembly with vertical, power-assisted adjustment
- Non-damaging carpet gripper screws
- Two-sided tape for hard flooring
- Optional seismic requirements

Testing and Approvals

- SCS Indoor Advantage™ Gold Certified
- ICC Approval ER-6090 for seismic
- 48 to 50 STC for solid panels per ASTM E-90

DIMENSIONS & DETAILS

Frame

- Solid panel width: 6" - 48" (152.4mm - 1219mm)
- Standard ceiling height up to 120" (3657mm)
- Standard frame depth 3.5" (88.9mm)
- Vertical adjustment:
 - Overlapping 4" base: +/- 1"
 - Recessed ceiling channel: +/- 0.38"

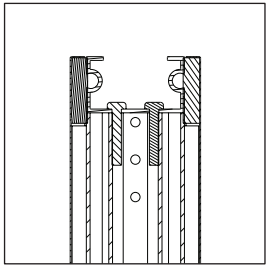
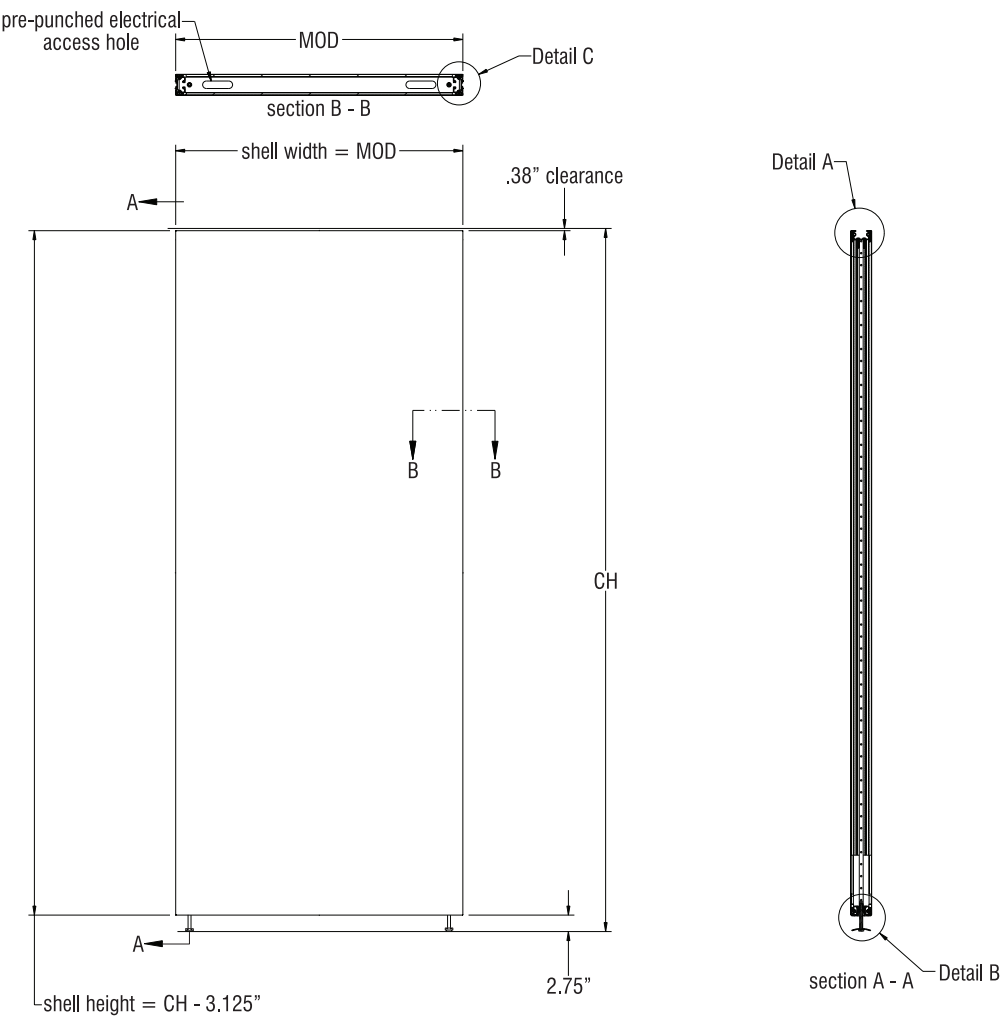
Ceiling Track Assembly Extruded Aluminum

- Powder-coated or anodized recessed ceiling channel with free-float adjustment from top of wall to ceiling sealed with gasket

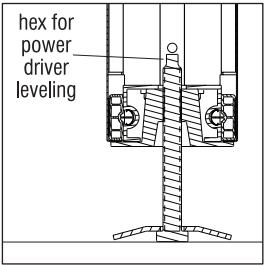
Frame Connections

- Bolted panel connection and rubber seals provide frame alignment and tight seal
- Bolted panel to intersection post connection - No corner trim required

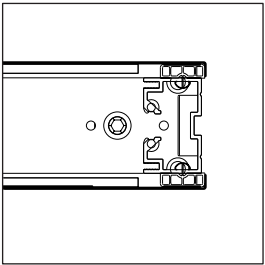
PRODUCT SPECIFICATIONS (CONTINUED)



Detail A



Detail B



Detail C

