

HO SHEET VINYL HEAT WELD SEAM CONSTRUCTION

INTRODUCTION

These instructions are written as a guide to be used by professional installers in the heat welding process of Tarkett Homogeneous Sheet Vinyl. This is not intended to replace our installation instructions or train a flooring installer on the process of heat welding. Always visit www.tarkett.com for the most current installation and maintenance instructions. Technical videos and tip sheets are also available. Contact Tarkett Technical Services at (800)-899-8916 with any questions.

1. Remove a minimum of 1/2" from the factory edge of the first sheet. When utilizing a knife and straight edge be sure to hold the knife perpendicular to the floor.



3. Establish cross-reference points onto the substrate and the top of the sheet.



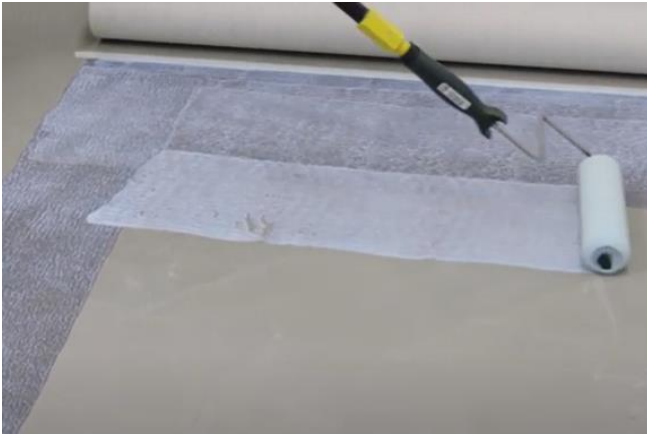
2. Move the sheet into position and mark a reference line onto the substrate following the edge of the first sheet.



4. Fold the sheet back and use a white chalk line to establish a reference point onto the substrate.



5. Using the correct trowel or roller, apply the Tarkett adhesive onto the substrate. Follow the previously established reference lines when applying adhesive.



6. After the adhesive is allowed the appropriate open time, lay the sheet into the adhesive. Use the previously established reference marks to help position the sheet during installation.



7. After laying the sheet into the adhesive, roll the floor in both directions using a 100 lbs., three-section roller.



8. Cut the second sheet and position it so that the factory edge overlaps the previously installed edge by a minimum of 1/2".

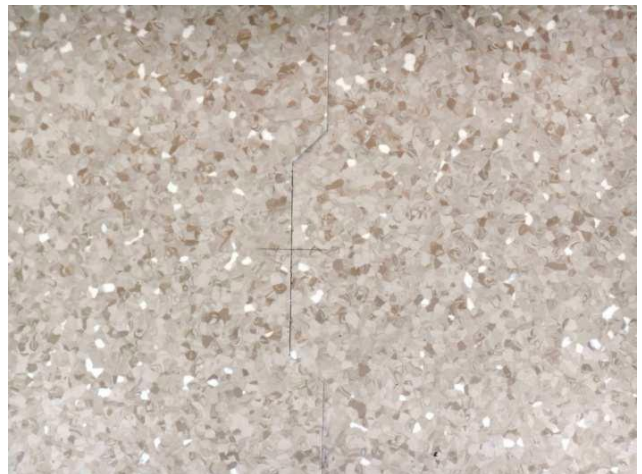


– OR –

9.A. Using a pencil and small square, establish reference points onto the top of both sheets. One mark should be placed perpendicular to the seam and another should follow the edge of the overlapping sheet.



9.B. Using a recess scribe, cut windows along the edge of the seam. At a minimum, one window should be made at each end of the sheet. After cutting the window, establish cross reference points on the top of both pieces.



10. After applying adhesive following the steps outlined above, lay the second sheet into the adhesive, and roll the sheet in both directions with a 100 lbs., three-section roller. Be careful to keep the roller approximately 3" from the seam. Using a recess scribe, scribe the second sheet. The recess scribe should be preset to the desired width of the seam (no greater than 1/64" for heat welded seams).



11. Place a piece of scrap material under the second sheet when cutting the seam. Utilize a utility knife with a sharp blade to cut along the scribe mark.



12. Roll the seam with a 2" steel hand roller. Then roll entire floor in both directions with a 100 lbs., three-section roller.



13. Clean any excess adhesive with a clean white cloth dampened with water before it dries. Erase all reference marks. Use denatured alcohol to clean. (Follow all manufacturer's precautions when using denatured alcohol.)



You are now ready to heat weld the seam.

Tarkett North America

Technical Services Department
30000 Aurora Road
Solon, OH 44139
800.899.8916
info@tarkettna.com
www.tarkett.com