



## Hardware Included

1/4"-20 x 2 3/8" Binder Post (x12)

1/4"-20 x 11/16" Binder Post & Cap (x4)

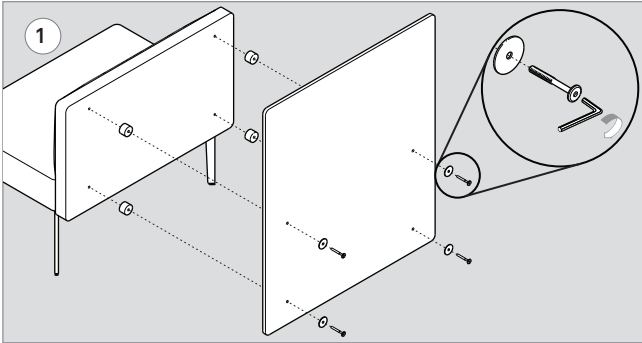
Spacer (x12)

1/4" Flat washer (x16)

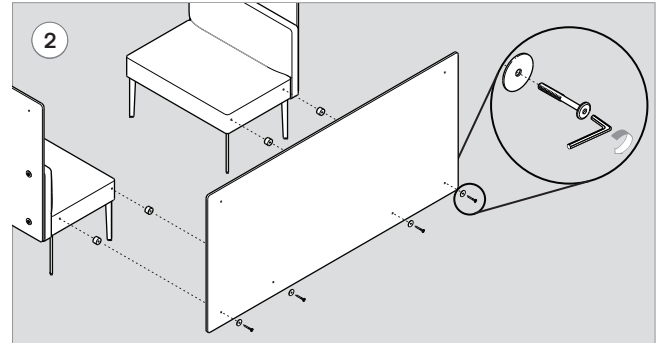


## Pact Booth Divider Assembly Instructions

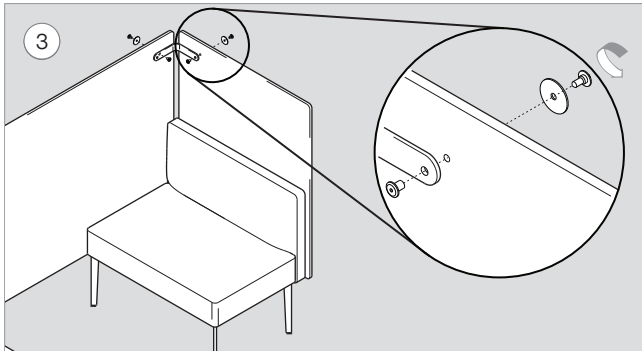
### Booth



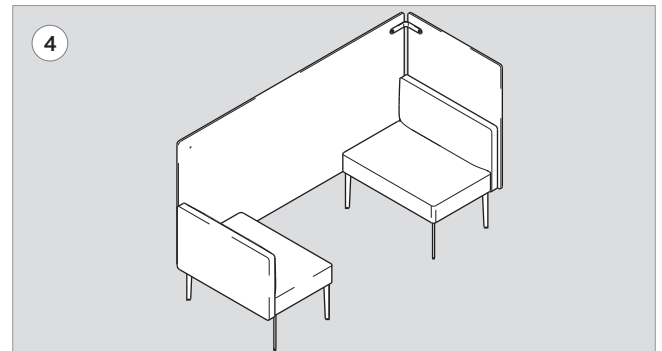
Using the 5/32" hex key, fasten divider to bench back with 1/4"-20 x 2 3/8" binder post (x4), spacer (x4) and 1/4" Flatwasher (x4).



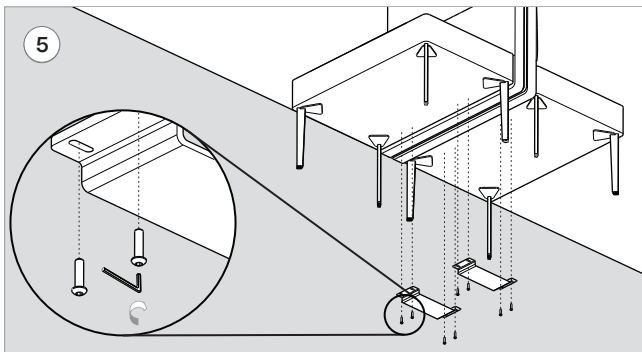
Repeat Step 1. Using the 5/32" hex key, fasten divider to bench seat side (x2) with 1/4"-20 x 2 3/8" binder post (x4), spacer (x4) and 1/4" Flatwasher (x4).



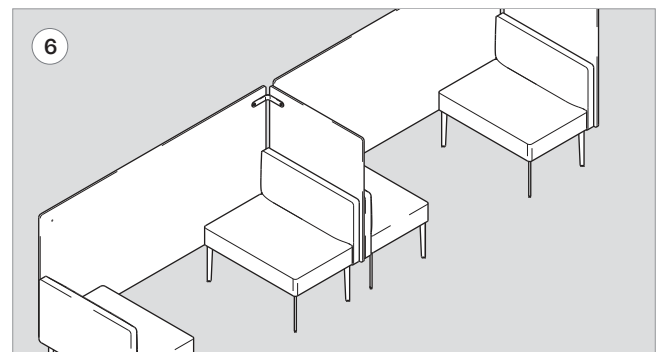
Using the 5/32" hex key, fasten bracket (x1) to divider (x2) with 1/4"-20 x 11/16" binder post and cap (x2), and 1/4" Flatwasher (x2).



Place the assembled booth into its final position.



When ganging booths use the 5/32" hex key, fasten ganging plate (x2) to bench (x2) with 1/4"-20 x 1" button head cap screw (x8).



Place the assembled booths into their final position.