

DOMO MODULAR



DESIGNING OPTIONS | FURNISHING ANSWERS

arcadia

DOMO | LOBBY & WAITING ROOMS



Come together with Domo Modular—the highly evolved and inspired collection that sparks ideas and experiences. Modern and inviting, these lounging accommodations provide the ideal segue to thoughtful interactions in creative workspaces, while the modularity aspect allows for flexibility and functionality across a variety of applications. For collaborating or working solo, to socializing or simply lounging, Domo creates truly authentic engagements on every level.

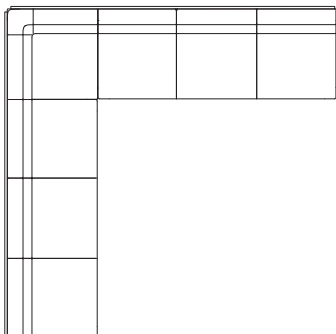


> LOUNGE #6110-BL
> SINGLE ARM
> LEFT SIDE BENCH SEAT



> LOVE SEAT #6120-BL
> SINGLE ARM
> LEFT SIDE BENCH SEAT

DOMO | CASUAL MEETING SPACES



- > SOFA #6130
- > ARMLESS
- > LOUNGE #6140
- > CORNER UNIT
- > PRIVATE BACK PANEL #FS-4-U
- > FOUR UNIT SPAN
- > UPHOLSTERED FINISH



- > OTTOMAN #6150-C
- > CASTERS

DOMO | PUBLIC SEATING ENVIRONMENTS



Privacy abounds with optional back and arm panels that serve as room dividers, portals for confidential conversations and as a mecca for collaborative activities. Available upholstered or in wood, laminate and whiteboard finishes, they help to create the ultimate work-and-lounge connection. To further enhance the experience, seating and table accessories—from electrical power ports to tablet options—beckon productivity and put the collective urge into generating masterful levels of achievement.



> TABLE #6174-V
> PENTAGONAL UNIT
> VENEER TOP



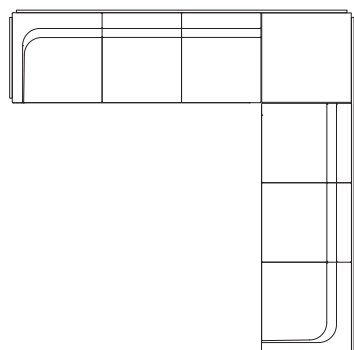
> BENCH #6162
> 2 SEAT



> OFFSET TABLE #6191-V
> VENEER TOP



> LOUNGE #6100-S
> 360-DEGREE SWIVEL



› SOFA #6130-R
› RIGHT ARM ONLY, AS SEATED

› TABLE #6180-V
› CORNER UNIT
› VENEER TOP

› SOFA #6130-L
› LEFT ARM ONLY, AS SEATED

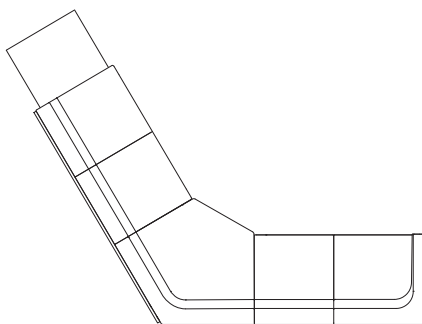
› PRIVATE BACK PANEL #FS-4A-V
› FOUR UNIT SPAN
› VENEER FINISH

› TRANSITIONAL BACK PANEL #TSL-4A-V
› FOUR UNIT SPAN
› VENEER FINISH

› PRIVATE ARM PANEL #AFL-V
› VENEER FINISH
› LEFT ARM, AS FACING

› SEMI-PRIVATE ARM PANEL #AHR-V
› VENEER FINISH
› RIGHT ARM, AS FACING

DOMO | COLLABORATIVE & MULTI-FUNCTIONAL AREAS



- > LOVE SEAT #6120-R
- > RIGHT ARM ONLY, AS SEATED

- > LOUNGE CHAIR #6145
- > 120-DEGREE CORNER UNIT

- > LOVE SEAT #6120
- > ARMLESS

- > TABLE #6185-ET-V
- > END UNIT
- > VENEER TOP

- > PRIVATE BACK PANEL #FS-3AA-W
- > THREE UNIT SPAN
- > WHITEBOARD FINISH

- > PRIVATE BACK PANEL #FS-3A-W
- > THREE UNIT SPAN
- > WHITEBOARD FINISH

DOMO | HOSPITALITY & DINING APPLICATIONS



> LOUNGE #6100-C
> CASTERS



> LOVE SEAT #6120
> ARMLESS
> SEMI-PRIVATE BACK PANEL #HS-2-U
> UPHOLSTERED FINISH

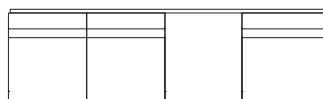


PRODUCT SPECIFICATIONS

Lounge, love seat and sofa models available individually or in modular combinations. Connecting inline, corner and end tables as well as stand-alone pentagonal shape tables manufactured in Maple, Walnut or White Oak veneer. Laminate and Corian® selections also offered. Seating units with arms and all tables available with optional accessories to include rotating tablet, flip-up tablet and Power Port electrical unit.

Benches offered in 2 and 3 seat rectangular or pentagonal shapes. Asymmetrical pentagonal bench features five sides and seats up to four. Back panels available on 2-4 unit spans and feature maximum length of 96". Offered in private (high), transitional (high to low or low to high) and semi-private (low) styles. Arm panels available in private and semi-private sizes and feature modest slope to match arm design. Panel finish options include veneer, laminate, upholstered and whiteboard.

Free-standing offset table presented in Maple, Walnut or White Oak veneer in addition to laminate and Corian. Metal platform base with 11½" height clearance available in Polished Aluminum as well as Metallic Silver, Metallic Champagne and Graphite powdercoat finishes. Optional ganging connector offered for more permanent connections. Accompanying lounge and bench seating available as well as meeting tables, occasional tables and credenzas.

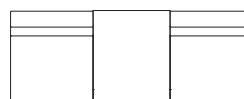


- > LOVE SEAT #6120
- > ARMLESS

- > TABLE #6185-CO
- > IN-LINE UNIT
- > CORIAN TOP

- > LOUNGE #6110
- > ARMLESS

- > PRIVATE BACK PANEL #FS-4-V
- > FOUR UNIT SPAN
- > VENEER FINISH



- > LOUNGE #6110
- > ARMLESS

- > TABLE #6185-V
- > IN-LINE UNIT
- > VENEER TOP

DESIGNED BY QDESIGN



P 714.562.8200 | 800.585.5957 F 714.562.8202
5692 FRESCA DRIVE, LA PALMA, CA 90623
WWW.ARCADIACONTRACT.COM