

# Vandal Resistant Profile Wrap: VL-C-LED

Sealed 4' Linear High Efficiency LED Surface C-Profile Wrap

- **DLC Listing Available for some configurations**
- **IP55 rated**
- **Several mounting options available for surface or suspended installation**
- **ETL listed for wet locations**
- **B.A.A. Compliant & Made in the USA by a Family Owned US Corporation**



Not all product variations listed on this page are DLC qualified. Visit <https://www.designlights.org/gsl> to confirm qualification.

DISCLAIMER: Although KURTZON has prepared the information contained in this document with all due care, KURTZON does not warrant or represent that the information is free from errors or omission. Whilst the information is considered to be true and correct at the date of publication, changes in circumstances after the time of publication may impact on the accuracy of the information. The information may change without notice and KURTZON is not in any way liable for the accuracy of any information printed and stored or in any way interpreted or used.

## ORDERING GUIDE

Series	Optics	Material	Series	Row Qty.	LED Type	CCT/CRI	Voltage	Options
VL			40		LEDR			

Series	Optics	Material	Size	Light Source			Voltage	Options			
				Row Qty.	LED Type	CCT/CRI					
VL	C	Frosted Acrylic	40	4' Housing	2	LEDR	83 CRI:	120V	FC	Fuse & Holder (One Supplied Per Circuit)	
					4		830 3000K	277V	EDL	-40F Electronic Driver	
	LPC	Clear Linear Prismatic Poly			3		Polished 304 SS Ext. & 304 SS Int.	835 3500K	UNV	EM10	10W Integral LED EM (Specify Input Voltage)
								840 4000K	347V*	CRM	Continuous Row Mounting
	FPC	Frosted Linear Prismatic Poly			4		White Alum Ext. & White CRS Int.	850 5000K		TP	Stainless Steel Tamperproof Fasteners
								90+ CRI:		SW	Sealed Wireway for Conduit End Feed (each end)
								935 3500K		WHT	White Finished Door & HSG
								940 4000K		PMB	(2) Pendant Mount Brackets (Pendants or Chains by Others)
								950 5000K		CMB	(2) Corner Mount Brackets
										AMB	(2) Adjustable Mount Brackets
										PxL*	Programmed to User Specified Lumen Value.
										PxW*	Programmed to User Specified Wattage Value.
										10KV	10KV Parallel Surge Protection (One Supplied Per Circuit)
										GTD	Generator Transfer Device
						WHIP	Must Specify Length and Wire Qty				
						OCCMW	Integral microwave occ sensor (32' max)				
						OCCHB	External PIR occ sensor (end mount 20'-40')				
						OCCLB	External PIR occ sensor (end mount 8'-10')				
						AMW	Anti-Microbial White Powdercoat				

\*Note: specify value in ordering notes below

Ordering Notes, If Applicable

## Vandal Resistant Profile Wrap: VL-C-LED

Sealed 4' Linear High Efficiency LED Surface C-Profile Wrap

### SPECIFICATIONS

**HOUSING:** Double channel housing of 20Ga 1008 Cold Rolled Steel, 20Ga 304 Stainless Steel, or .040" 3003 Aluminum construction.

**END CAPS:** Precision stamped 20Ga 304 Stainless Steel end caps secured to housing with captive stainless steel flush head screws. SW Option provides a 3 piece conduit hub/ring/plug assembly installed in the endcap.

**GASKETS:** NSF Listed closed cell microcellular extruded KleanLock SealPro gasket with vulcanized corners making a one-piece oil and solvent resistant gasket system.

**OPTICS:** All lensing is extruded from a nominal 1/8" plastic material. Available in frosted acrylic, Clear Polycarbonate with linear ribs, or Clear Polycarbonate with a frosted inlay.

**LEDs:** Commercially available in a wide variety of Color Temperature (CCT), FLUX, and CRI. Highly efficient and consistent color maintained to 3 SDMC for color critical applications. B50/L70 and compliant with Zhaga recognized hole patterns. Consult factory for LED options or configurations not listed below.

**DRIVERS:** Standard Universal Voltage Class 2 drivers are 0-10v Dimmable to 1% for most LED configurations. They come with at least 2.5Kv surge protection, have less than 10% THD at max load, Ballast Factor Greater than .95 and are programmable to match specific lumen or wattage requirements. Drivers with higher input voltage ratings are available, consult factory for driver specifications.

**REFLECTOR:** Die formed metal with high reflectance white polyester powder coat finish. Typical reflectivity 92%.

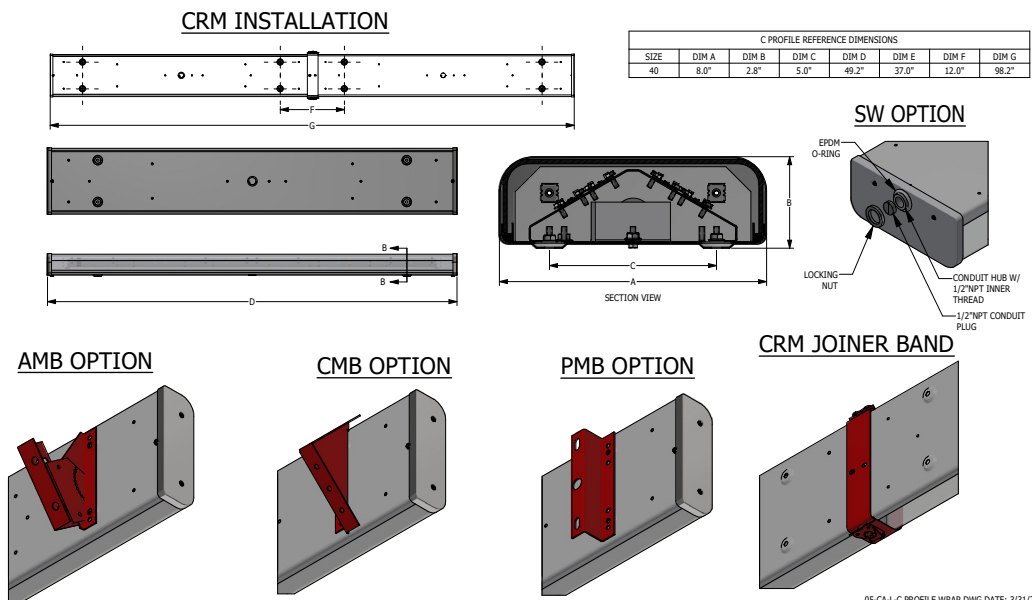
**INSTALLATION:** Suitable for wet location installation under covered ceilings only. Luminaire is provided with four 5/16" debossed holes for mounting. Power is brought in though 1/2" flattened conduit K.O. located on the bottom of luminaire. Power can also be brought through the end of the luminaire with SW option selected. Suitable for thru wiring.

**ROWS:** Joiner bands provided for continuous row mounting (See Option: CRM). Please specify number of fixtures in each run.

**FINISH:** Stainless steel housings are satin polished unless WHT or AMW options are selected. All other materials are provided with gloss high reflectance white polyester powder coat with 1000hr salt spray test per ASTM B117. AMW option provides a white anti-microbial polyester powder coat to all exposed surfaces.

**LISTINGS:** IP55 rated for dust and water ingress. ETL listed per UL\_1598 for wet locations. Drivers and LEDs are covered by a 5 year warranty, the remaining fixture is covered by a 10 year warranty. This product is Buy American Act (B.A.A.) compliant.

### PRODUCT DRAWINGS



# Vandal Resistant Profile Wrap: VL-C-LED

Sealed 4' Linear High Efficiency LED Surface C-Profile Wrap

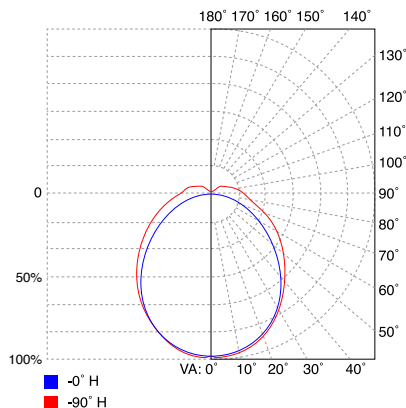
## ENERGY DATA

"C" PROFILE LED WRAP (APPROX <sup>1</sup> LUMENS DELIVERED)											
LENS TYPE	ENCLOSURE SIZE	LED SELECTION	STANDARD DIMMING	83 CRI (3000K - 5000K)				90 CRI (3500K - 4000K)			
				LUMENS	WATTS <sup>2</sup>	EFFICACY <sup>3</sup>	MAX AMB TEMP <sup>4</sup>	LUMENS	WATTS <sup>2</sup>	EFFICACY <sup>3</sup>	MAX AMB TEMP <sup>4</sup>
C	40	2LED	0-10V 1%	7,764	57	137	45°C (113°F)	7,671	58	132	45°C (113°F)
FPC	40	2LED	0-10V 1%	7,065	57	125	45°C (113°F)	6,980	58	120	45°C (113°F)
LPC	40	2LED	0-10V 1%	7,764	57	137	45°C (113°F)	7,671	58	132	45°C (113°F)
C	40	4LED	0-10V 1%	14,243	112	127	45°C (113°F)	14,211	113	126	45°C (113°F)
FPC	40	4LED	0-10V 1%	12,952	112	116	45°C (113°F)	12,932	113	114	45°C (113°F)
LPC	40	4LED	0-10V 1%	14,246	112	127	45°C (113°F)	14,209	113	126	45°C (113°F)

- 1 DELIVERED LUMEN DATA IS EXTRAPOLATED FROM MEASURED DATA @25C WITH NO EXTRA OPTIONS. VARIANCES WILL OCCUR WHEN OTHER SELECTIONS ARE MADE
- 2 WATTAGE IS MEASURED WITH 4000K SELECTION @ 120vAC AND Tambient = 25C. WATTAGES MAY VARY WITH ALTERNATE CONFIGURATIONS
- 3 EFFICACY CALCULATED USING 4000K CCT DATA.
- 4 MAX AMBIENT TEMP RATING. TEMP RATING MAY VARY WITH ALTERNATE SPECIFIED DRIVERS OR ANY NON STANDARD SELECTION
- 5 DELIVERED LUMENS FOR EM10 = (10W)\*(EFFICACY) = DELIVERED LUMENS. EM10 ADDS 4W TO TOTAL LUMINARE

## PHOTOMETRICS

**C Optic**



**LPC Optic**

