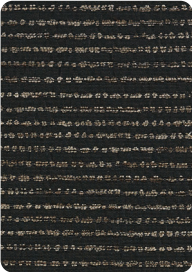


PATTERN INFO



Content:	61% Polyester, 24% Post Consumer Recycled Polyester, 14% Post Industrial Recycled Polyester, 1% Nylon
Finish/Backing:	Stain Resistant + Acrylic Backing
Application:	Upholstery, Panel, Wallcovering (Additional Backing Required)
Repeat:	V: 5 ¾"
Width:	55/56"
AC#:	61300 - 61312
Skus:	13

ENVIRONMENT

- AB-2998 Compliant: Flame Retardant Free
- Meets Criteria for Healthier Hospital Initiative
- Antimicrobial Free | Antibacterial Free
- PFAS Free (including PFOA & PFOS Free)
- BPA, TRIS Free
- Formaldehyde Free
- PVC Free
- Phthalate Free
- Lead Free
- Heavy Metal Free
- Does Not Contain Conflict Minerals
- Proposition 65 Compliant
- LBC Red List Free
- REACH Compliant
- RoHS Compliant
- Contributes to LEED Certification
- Recycled Content

PERFORMANCE

- Abrasion Resistant
- Bleach Cleanable
- Water Based Stain Resistance

TESTING

This fabric has passed:

Flammability: California Bulletin #117-13; UFAC: Class 1 / NFPA 260; ASTM E-84 (unadhered)

Abrasion: 100,000* Double Rubs (Wyzenbeek Method)
*Abrasion test results exceeding ACT Performance Guidelines are not an indicator of product lifespan. Multiple factors affect fabric durability and appearance retention.

Lightfastness: 60 Hours

A

CLEANING

Code: WS
Can be cleaned using 20% bleach maximum / 80% water solution.

Column is part of the Kalos Collection. Other patterns in this collection include Delphi, Key, Lyre, and Odyssey.

Custom colors are available through our Options® Studio.