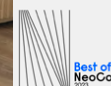




Innovation



Silver



# Material Edit

CURVED / KILN / WOODTONE

COLLECTOR / CREATOR / INVENTOR /  
MAKER / VISIONARY

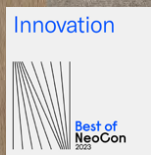
**R**  
RESILIENT  
PLANK

**M**  
MODULAR

WOODTONE in alpine / installed in stagger

VISIONARY custom rug in balance





## MATERIAL EDIT

## HARD SURFACE

CURVED

KILN

WOODTONE

—

**CURVED** in pewter bark / **KILN** in pewter  
installed in stagger



Designed for flexibility throughout a space, **Material Edit hard surface** features three distinct material visuals in five color families that work separately or together for unique textural designs and easy-to-create pattern play.

## inside the design /

Material Edit features a 20 mil wear layer for superior durability and an ExoGuard® finish provides enhanced scratch and stain resistance. In 9 x 36 planks with a 5mm construction, the styles offer a seamless transition to carpet.



easy-to-coordinate  
styles + colorways



resistant to  
scratches + scuffs



high-performance  
construction at  
a core price point



easy glue-down  
installation



easy to clean +  
no polish needed



low VOC +  
FloorScore certified







**CURVED** in ember ash /  
installed in stagger







**KILN** in clay /  
installed in stagger





**WOODTONE** in spruce /  
installed in stagger



MATERIAL EDIT / HARD SURFACE





**WOODTONE** in willow /  
installed in stagger

featured with **MAKER** in (300)





**CURVED** in ivory willow /  
installed in stagger





**WOODTONE** in alpine / **KILN** in clay  
installed in herringbone and stagger





**WOODTONE** in ash / installed in stagger



MATERIAL EDIT / HARD SURFACE





**WOODTONE** in bark /  
installed in stagger





**KILN** in porcelain /  
installed in stagger



**CURVED** in porcelain spruce / installed in stagger



COLORWAYS I730V | CURVED



00110 porcelain spruce



00125 ivory willow



00735 alpine clay



00520 pewter bark



00750 ember ash

COLORWAYS I727V | KILN



00105 porcelain



00120 ivory



00720 clay

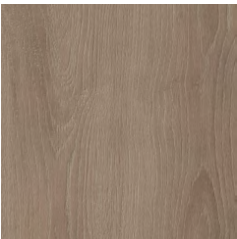


00535 pewter



00525 ember

COLORWAYS I724V | WOODTONE



00115 spruce



00135 willow



00745 alpine



00530 bark



00780 ash

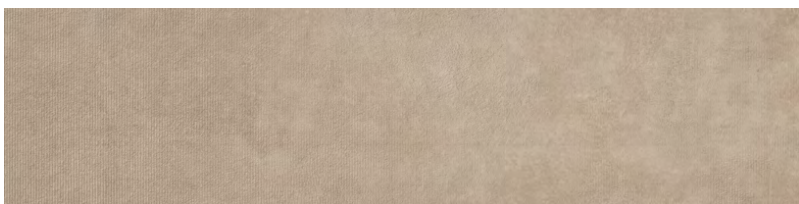


## PATTERN SIZE & SCALE COMPARISON



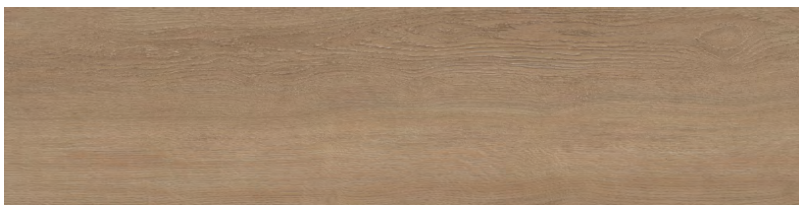
9" X 36" PLANK OF CURVED

shown in color 125 ivory willow



9" X 36" PLANK OF KILN

shown in color 120 ivory



9" X 36" PLANK OF WOODTONE

shown in color 135 willow

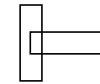
*Pattern cut varies by tile. Please order samples to ensure desired color and pattern selection.*





For full specifications and color, please [visit this collection on the website.](#)

## MATERIAL EDIT / HARD SURFACE



resilient plank

### PRODUCT SPECIFICATIONS

#### **CURVED**

style / I730V

product size	9" x 36"   22.86 cm x 91.44 cm
construction	luxury vinyl plank
total thickness	.197"   5 mm
finish	ExoGuard®
installation	glue down

#### **KILN**

style / I727V

product size	9" x 36"   22.86 cm x 91.44 cm
construction	luxury vinyl plank
total thickness	.197"   5 mm
finish	ExoGuard®
installation	glue down

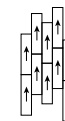
#### **WOODTONE**

style / I724V

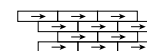
product size	9" x 36"   22.86 cm x 91.44 cm
construction	luxury vinyl plank
total thickness	.197"   5 mm
finish	ExoGuard®
installation	glue down

### INSTALLATION METHODS

STAGGER



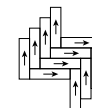
BRICK



MONOLITHIC



HERRINGBONE



**WOODTONE** in willow + **CURVED** in ivory willow + **KILN** in ivory /  
installed in stagger



Silver



Best of  
NeoCon  
2023

MATERIAL EDIT

SOFT SURFACE

COLLECTOR

CRAFTER

INVENTOR

MAKER

VISIONARY

—



Low Embodied Carbon  
Carbon Neutral



**VISIONARY** in contrast /  
installed in brick



**Material Edit soft surface** merges performance and sustainability with design flexibility. In 18 x 36 carpet tile, the collection includes five styles in multiple constructions for easy coordination throughout a space.

## inside the design /

Constructed with EcoSolution Q100™ nylon and EcoWorx® backing, Material Edit is carbon neutral with a low embodied carbon footprint. This collection is IN THE LOOP – meaning it can be recycled in its entirety at the end of its useful life through our re[TURN]™ reclamation program – to be turned into the material ingredients to make other EcoWorx products.



easy-to-coordinate styles



multiple constructions for various applications



durable + sustainable materials



IN THE LOOP /  
fully recyclable  
through re[TURN]™



low embodied  
carbon + carbon  
neutral

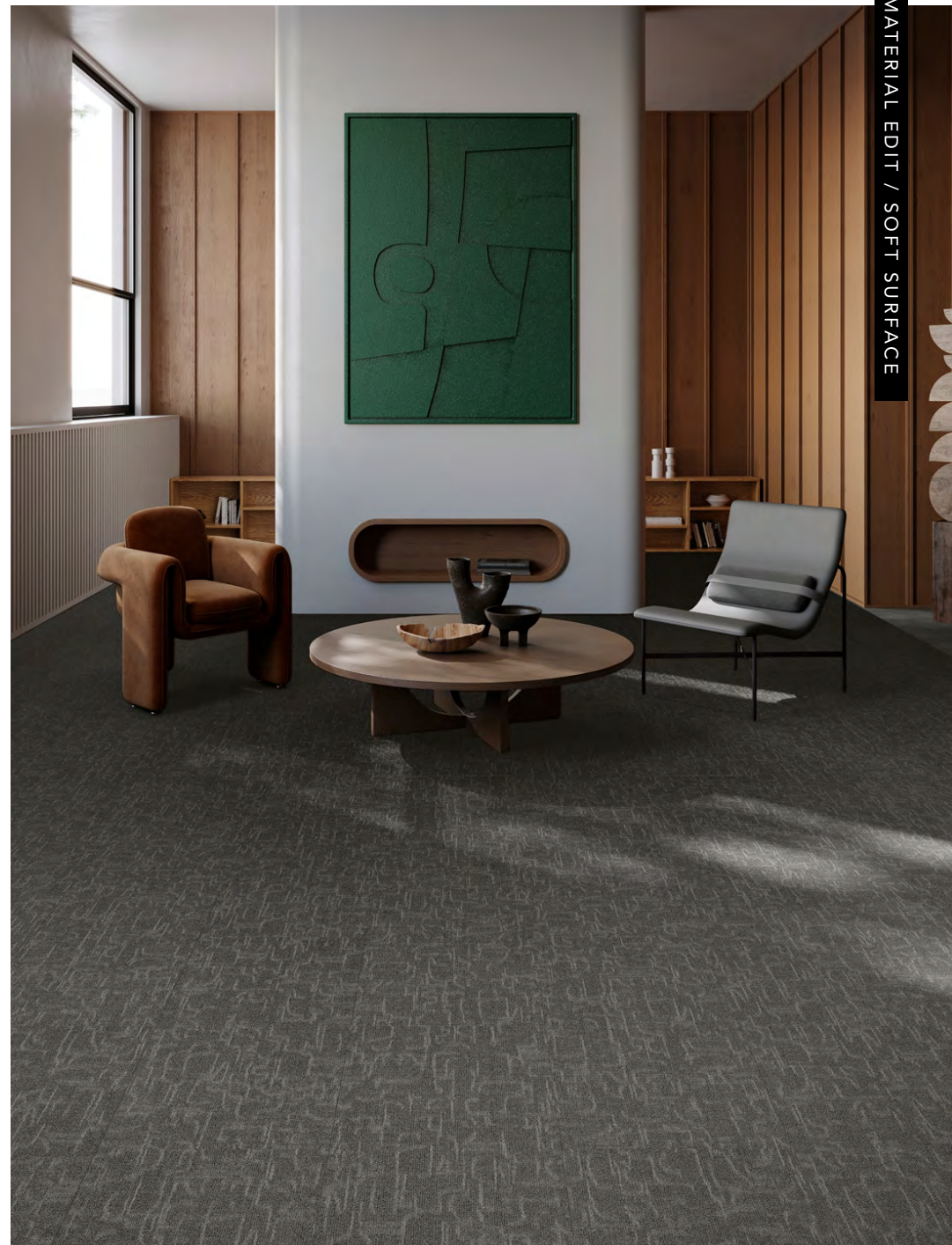


Cradle to Cradle  
Certified®  
Silver 4.0





**COLLECTOR** in movement /  
installed in stagger







**CRAFTER** in balance /  
installed in stagger





**INVENTOR** in contrast and balance /  
installed in stagger



MATERIAL EDIT / SOFT SURFACE





**MAKER** in unity / **WOODTONE** in alpine /  
installed in stagger





**VISIONARY** in balance /  
installed in stagger















**VISIONARY** custom rug in harmony /  
installed in stagger





**VISIONARY** in contrast





**COLLECTOR** in contrast / installed in stagger





**MAKER** in balance /  
installed in stagger



MATERIAL EDIT / SOFT SURFACE







COLORWAYS 10666 | COLLECTOR



00300 contrast



00480 space



00500 emphasis



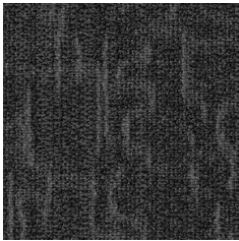
00530 balance



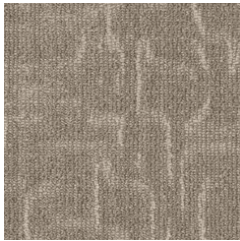
00550 proportion



00570 movement



00590 unity



00800 harmony



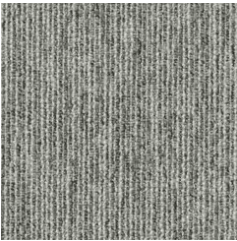
18" X 36" TILE OF COLLECTOR

shown in color 500 emphasis

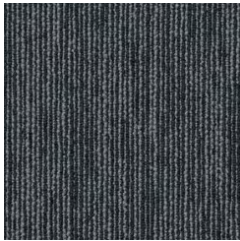
*Pattern cut varies by tile. Please order samples to ensure desired color and pattern selection.*



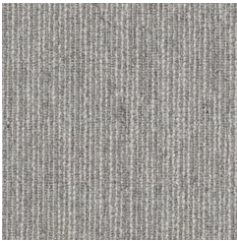
COLORWAYS 10667 | CRAFTER



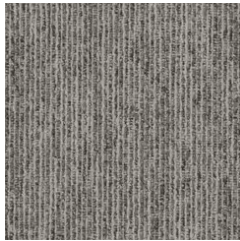
00300 contrast



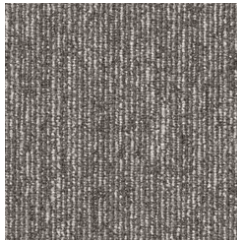
00480 space



00500 emphasis



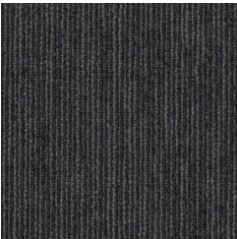
00530 balance



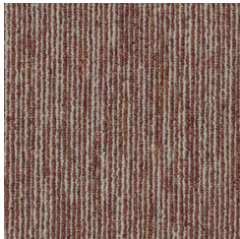
00550 proportion



00570 movement



00590 unity



00800 harmony



18" X 36" TILE OF CRAFTER  
shown in color 500 emphasis

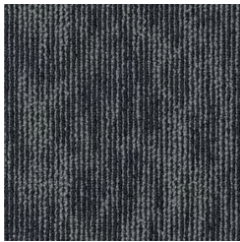
*Pattern cut varies by tile. Please order samples to ensure desired color and pattern selection.*



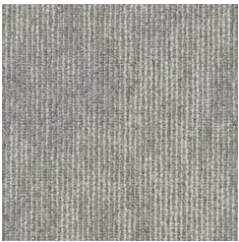
COLORWAYS 10668 | INVENTOR



00300 contrast



00480 space



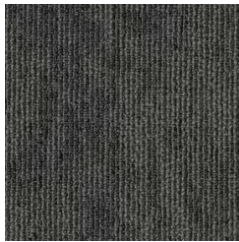
00500 emphasis



00530 balance



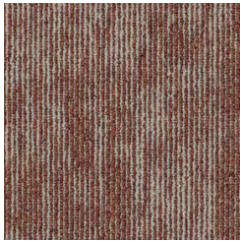
00550 proportion



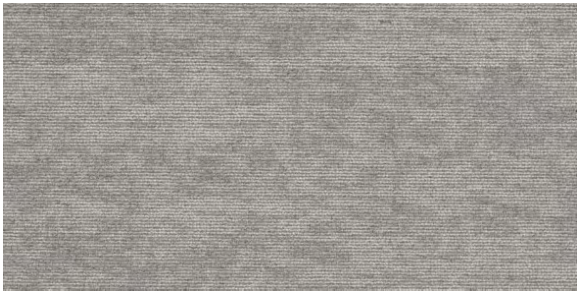
00570 movement



00590 unity



00800 harmony



18" X 36" TILE OF INVENTOR  
shown in color 500 emphasis

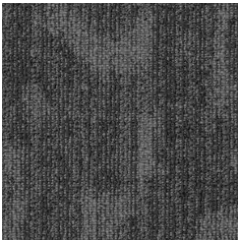
*Pattern cut varies by tile. Please order samples to ensure desired color and pattern selection.*



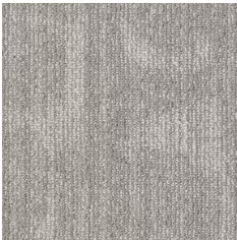
COLORWAYS 10669 | MAKER



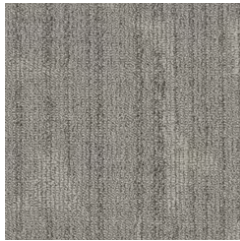
00300 contrast



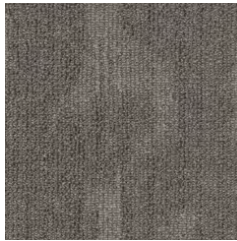
00480 space



00500 emphasis



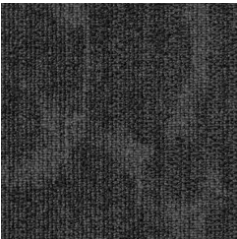
00530 balance



00550 proportion



00570 movement



00590 unity



00800 harmony



18" X 36" TILE OF MAKER

shown in color 500 emphasis

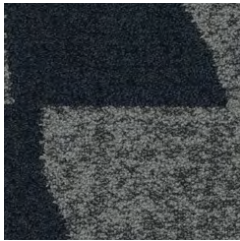
*Pattern cut varies by tile. Please order samples to ensure desired color and pattern selection.*



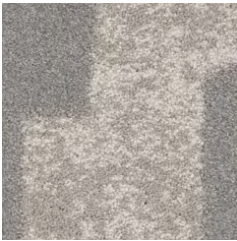
COLORWAYS 10670 | VISIONARY



00300 contrast



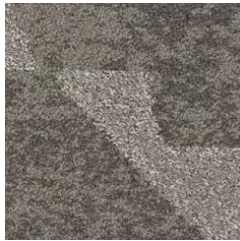
00480 space



00500 emphasis



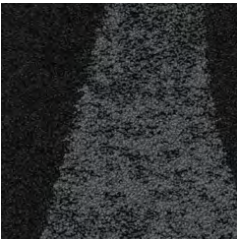
00530 balance



00550 proportion



00570 movement



00590 unity



00800 harmony

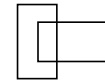


18" X 36" TILE OF VISIONARY  
shown in color 500 emphasis

*Pattern cut varies by tile. Please order samples to ensure desired color and pattern selection.*



## MATERIAL EDIT / SOFT SURFACE



modular

### PRODUCT SPECIFICATIONS

#### COLLECTOR

product size	18" x 36"   45.72 cm x 91.44 cm
gauge	1/12   47.24 per 10cm
tufted yarn weight	19 oz./yd <sup>2</sup>   644.21 g/m <sup>2</sup>
stitches	9.67 per inch   38.06 per 10 cm
fiber type	EcoSolution Q100™ Nylon
backing type	EcoWorx® Tile

#### CRAFTER

product size	18" x 36"   45.72 cm x 91.44 cm
gauge	1/10   39.37 per 10cm
tufted yarn weight	19 oz./yd <sup>2</sup>   644.21 g/m <sup>2</sup>
stitches	10 per inch   39.37 per 10 cm
fiber type	EcoSolution Q100™ Nylon
backing type	EcoWorx® Tile

#### INVENTOR

product size	18" x 36"   45.72 cm x 91.44 cm
gauge	1/10   39.37 per 10cm
tufted yarn weight	19 oz./yd <sup>2</sup>   644.21 g/m <sup>2</sup>
stitches	10 per inch   39.37 per 10 cm
fiber type	EcoSolution Q100™ Nylon
backing type	EcoWorx® Tile

#### MAKER

product size	18" x 36"   45.72 cm x 91.44 cm
gauge	1/12   47.24 per 10cm
tufted yarn weight	19 oz./yd <sup>2</sup>   644.21 g/m <sup>2</sup>
stitches	10 per inch   39.37 per 10 cm
fiber type	EcoSolution Q100™ Nylon
backing type	EcoWorx® Tile

#### VISIONARY

product size	18" x 36"   45.72 cm x 91.44 cm
gauge	1/10   39.37 per 10cm
tufted yarn weight	34 oz./yd <sup>2</sup>   1152.80 g/m <sup>2</sup>
stitches	9.17 per inch   36.09 per 10 cm
fiber type	EcoSolution Q100™ Nylon
backing type	EcoWorx® Tile

### INSTALLATION METHODS

#### MONOLITHIC



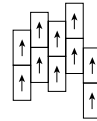
#### BRICK



#### ASHLAR



#### STAGGER



#### BASKETWEAVE



#### HALF BASKETWEAVE



#### HERRINGBONE



#### OFFSET



#### BOXED IN



For full specifications and color, please [visit this collection on the website.](#)

**CRAFTER + MAKER + COLLECTOR** in emphasis /  
installation in herringbone



## COORDINATING PALETTE

WARM

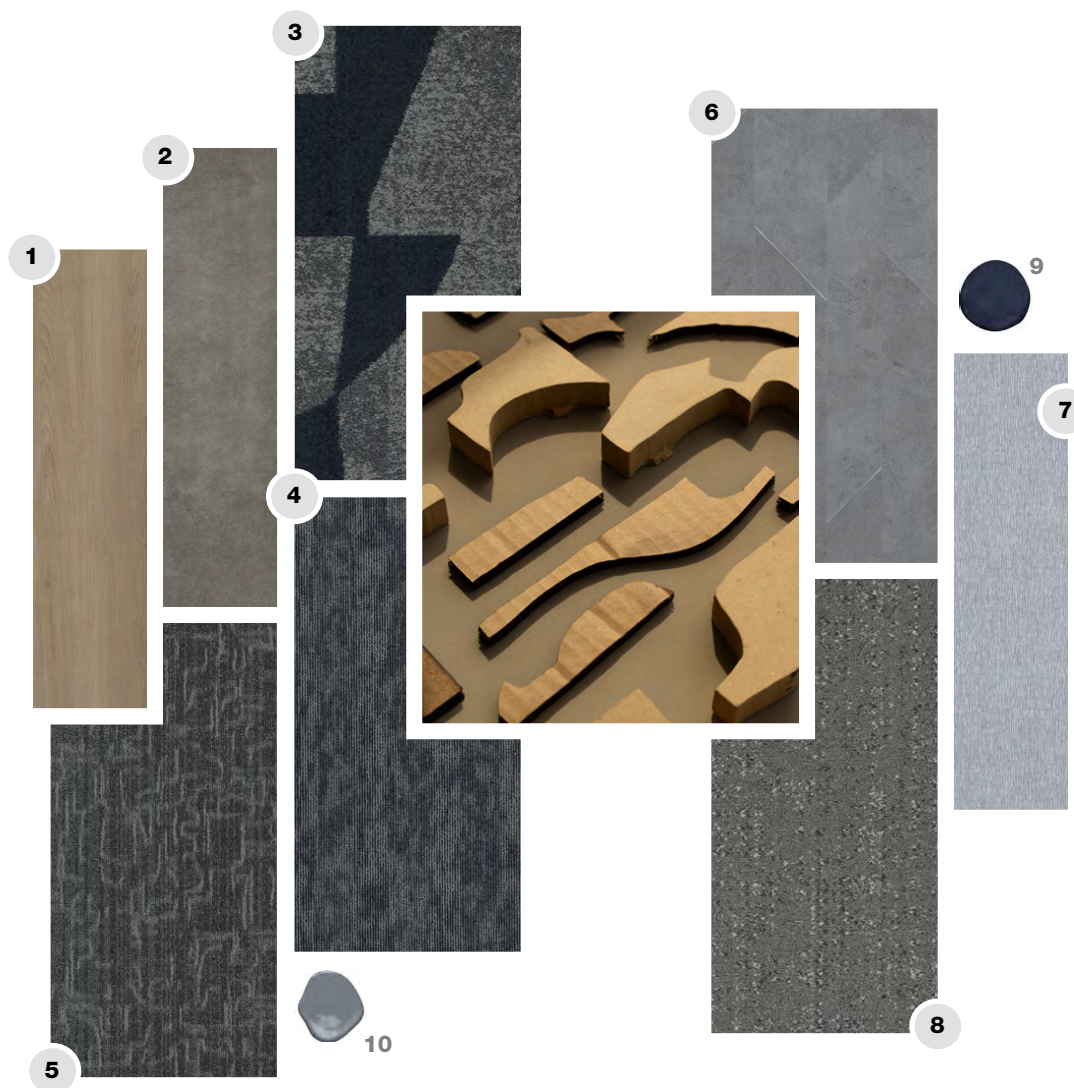


- 1** CURVED I730V in ivory willow
- 2** WOODTONE I724V in willow
- 3** KILN I727V in ivory
- 4** VISIONARY I0670 in harmony
- 5** CRAFTER I0667 in harmony
- 6** MAKER I0669 in harmony
- 7** ITERATE I638V in scope
- 8** CHANNEL TUFT I0638 in chenille
- 9** OXIDIZED I479V in travertine
- 10** BENJAMIN MOORE PAINT in Colonial Brick 2093-30
- 11** BENJAMIN MOORE PAINT in Balboa Mist OC-27



## COORDINATING PALETTE

COOL



- 1 WOODTONE I724V in bark
- 2 KILN I727V in pewter
- 3 VISIONARY I0670 in space
- 4 INVENTOR I0668 in space
- 5 COLLECTOR I0666 in space
- 6 INSET I577V in iron silver
- 7 ENERGIZE I602V in gather
- 8 UNHEMMED I0637 in loom
- 9 BENJAMIN MOORE PAINT in Old Navy 2063-10
- 10 BENJAMIN MOORE PAINT in Smoke Grey 2120-40



## COORDINATING PALETTE

MOODY



- 1** WOODTONE I724V in ash
- 2** CURVED I730V in ember ash
- 3** INVENTOR I0668 in movement
- 4** VISIONARY I0670 in movement
- 5** MOLTEN I478V in obsidian
- 6** EARTHEN I678V in mountain
- 7** REACH I601V in connect
- 8** UNHEMMED I0637 in doobby
- 9** BENJAMIN MOORE PAINT in  
Bunny Gray 2124-50
- 10** BENJAMIN MOORE PAINT in  
Black Iron 2120-20