

COLLECTION LOOKBOOK /

patcraft®

WASTE KNOT



ReWorx
hybrid tile
12" x 48"

Waste Knot. Want More.

Waste Knot represents a story of materiality, looking at materials as what they are and inspired by what they might become, to design a collection connected to process and product lifecycles. It is a visual interpretation of circularity, giving recycled materials new life on a journey of circular design. Uncovering the beauty of independent elements—fibers, yarns, textiles—that come together with new purpose, we find innovative ways to design with what we have for creative reuse.





WHEN WE LOOK AT MATERIAL AS WHAT IT IS AND WHAT IT MIGHT BECOME, DESIGN POTENTIAL BECOMES ENDLESS. /

Waste Knot is a hybrid flooring collection designed on the ReWorx™ platform that offers the combined benefits of hard and soft surface. Available in 12" x 48" planks, Waste Knot features abstract patterning of fibers that create tonal texture and movement. Offered in 9 colorways, the palette has a broad range of neutral and saturated hues designed to coordinate with other collections within the ReWorx platform.



inside the design /



**full recyclable /
In The Loop**

Made from 100% PET, Waste Knot is *In The Loop* and can be recycled in its entirety.



**low embodied carbon
+ carbon neutral**

Waste Knot is a carbon neutral collection with low embodied carbon.



**enhances acoustics
+ absorbs sound**

The felted texture offers improved acoustical benefits to absorb sound.



**easy to clean with
hot water extraction**

The collection can be maintained with regular vacuuming, and tough stains and spills can be removed with pH neutral cleaner and hot water extraction.



**durability +
appearance retention**

Designed on the ReWorx™ platform, the collection is durable and maintains appearance.



**high traction
certification for
ReWorx**

Waste knot is designed to perform in high-demand, high-traffic spaces.



Transform space from the inside out.

Create active zones to promote connection or focus zones to promote reflection. With soft surface acoustical benefits to help absorb sound, design with performance in mind.

spaces to
gather /

Create and define
space to gather, meet
and greet.

workplace
multifamily
higher education
government



WASTE KNOT in umber, parchment and canvas /
installed stagger

WASTE KNOT in delft and umber /
installed stagger





WASTE KNOT in fresco and
encaustic / installed stagger

featured with
DICHROIC 12X48 in granite /
installed stagger

spaces to
reflect /

Design for peaceful,
mindful, focused moments.

workplace
higher education
government
healthcare



WASTE KNOT in mistral, parchment and canvas /
installed stagger



WASTE KNOT in fresco /
installed stagger

WASTE KNOT in wisp and delft /
installed brick



spaces that perform /

Connecting space and
experience in busy, active,
vibrant zones.

workplace
multifamily
higher education
government
healthcare



WASTE KNOT in delft and encaustic
with **SPATIAL PALETTE** in stonecrest /
installed stagger



WASTE KNOT in vanta and parchment /
installed stagger

WASTE KNOT in canvas /
installed stagger



COLORWAYS



parchment 105



canvas 125



umber 775



wisp 505



mistral 525



vanta 595



encaustic 395

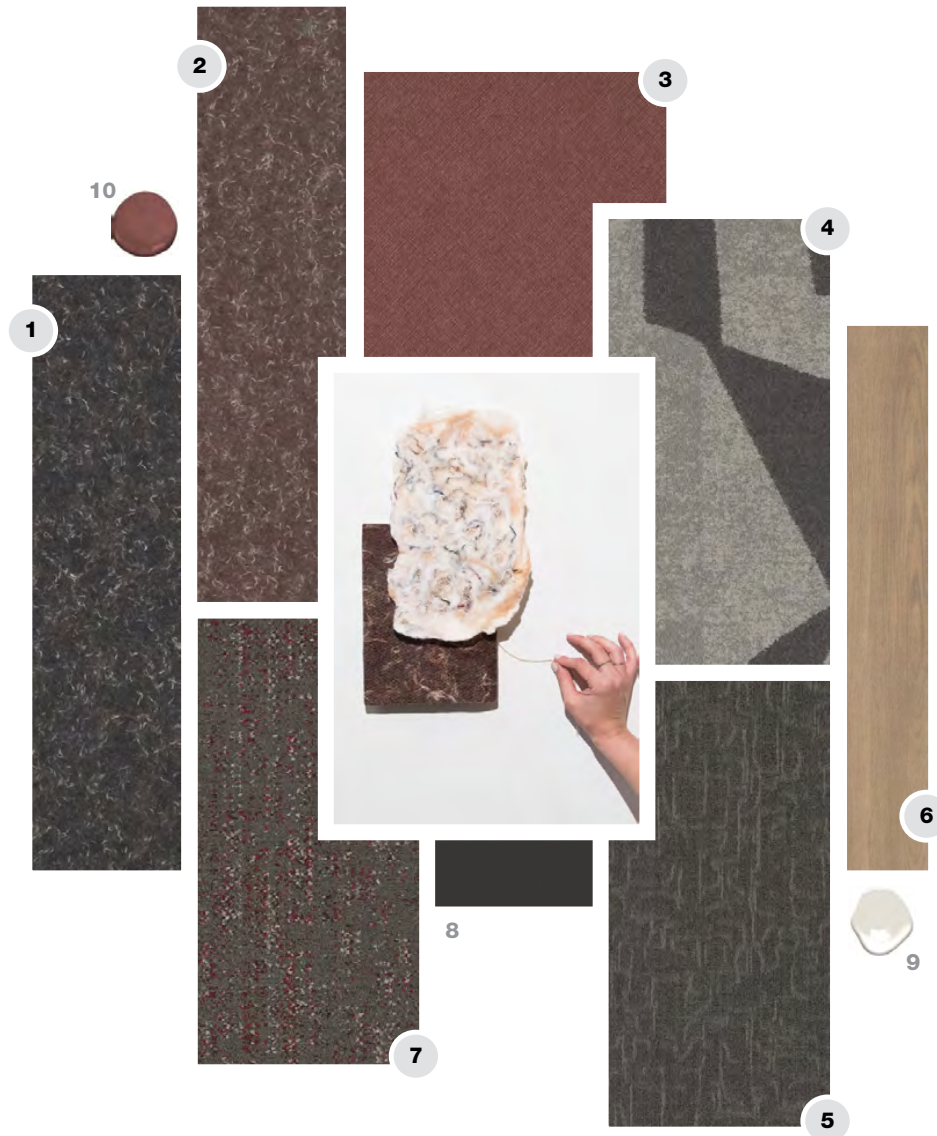


fresco 565



delft 445

COORDINATING PALETTE / HIGHER EDUCATION



- 1 WASTE KNOT I0680 in vanta
- 2 WASTE KNOT I0680 in umber
- 3 GRAPH I713V in maroon
- 4 VISIONARY I0670 in balance
- 5 COLLECTOR I0666 in movement
- 6 TRUE SPECIES I738V in hazelnut
- 7 UNHEMMED I0637 in slub
- 8 RUBBER BASE in carob 00002
- 9 BENJAMIN MOORE PAINT
in Classic Gray OC-23
- 10 BENJAMIN MOORE PAINT
in Fading Twilight 1258

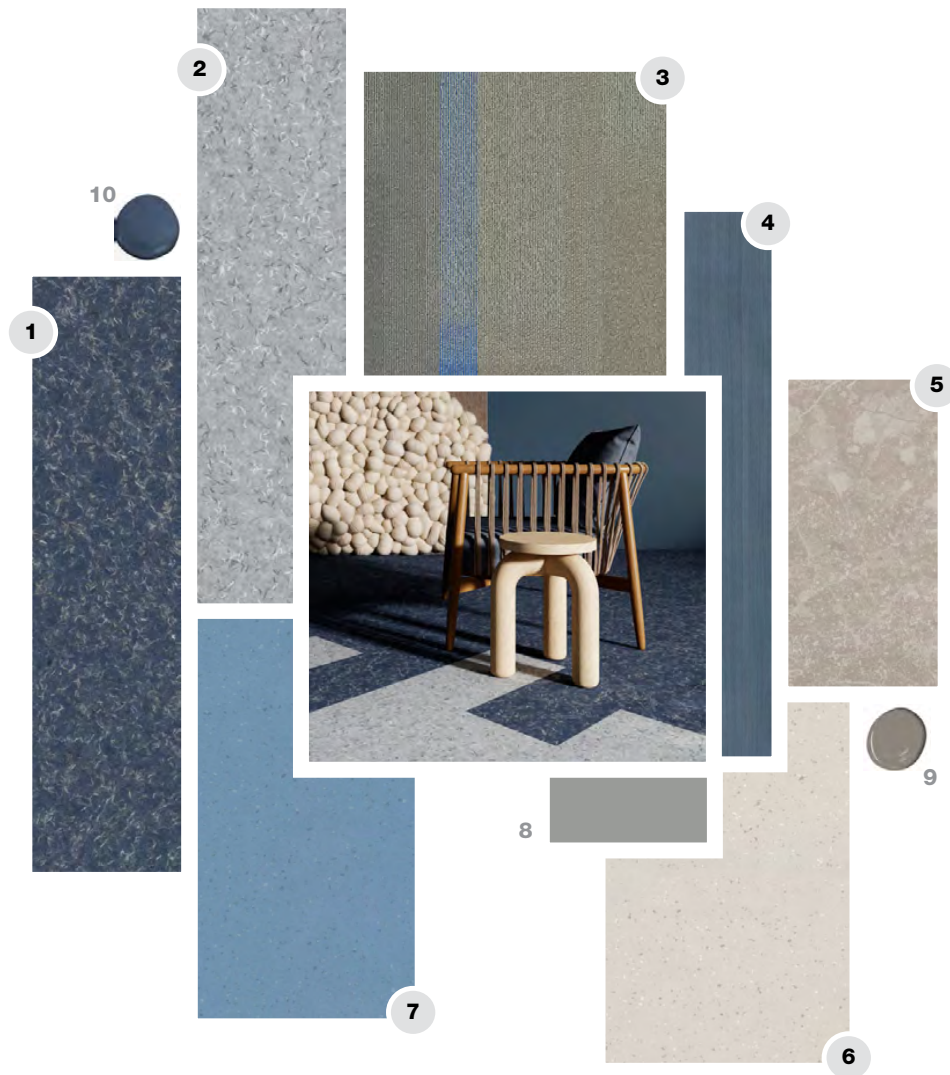
designed by

MORGAN ROSENBAUM

Interior Design Service Specialist

CUSTOMIZE & ORDER PREMIX >

COORDINATING PALETTE / HEALTHCARE



- 1 WASTE KNOT I0680 in delft
- 2 WASTE KNOT I0680 in wisp
- 3 COLOR POP I0381 in satellite pop
- 4 WOOD + WEALD I781V in arctic
- 5 EARTHEN I676V in latte
- 6 HOLISTIC THRIVE I691V in stir
- 7 HOLISTIC THRIVE I691V in punk
- 8 RUBBER BASE in ash 00003
- 9 BENJAMIN MOORE PAINT in Metropolis CC-546
- 10 BENJAMIN MOORE PAINT in Kensington Blue CC-780

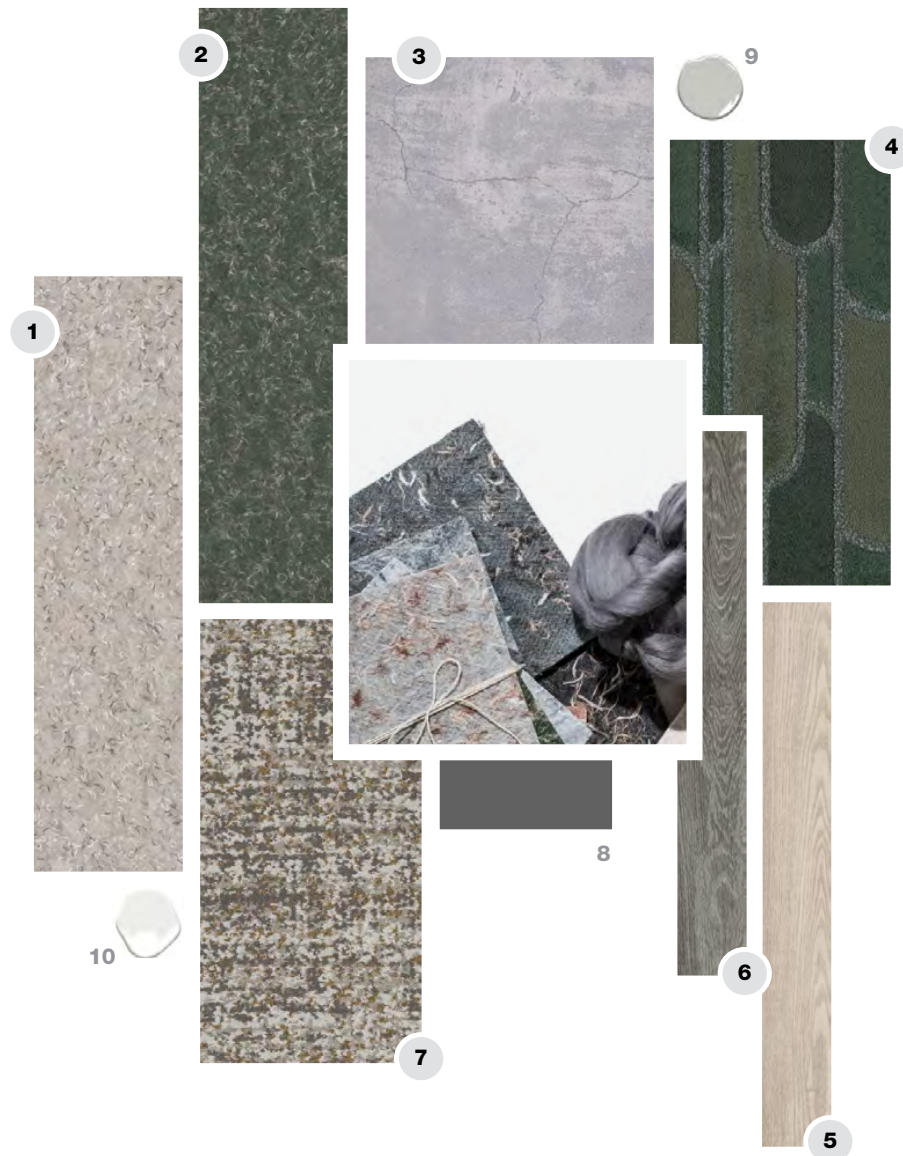
designed by

MORGAN ROSENBAUM

Interior Design Service Specialist

CUSTOMIZE & ORDER PREMIX >

COORDINATING PALETTE / WORKPLACE



- 1 WASTE KNOT I0680 in parchment
- 2 WASTE KNOT I0680 in encaustic
- 3 MOLTEN I478V in calcite
- 4 GRAPHIC ARC I0597 in shape
- 5 TIMBER GROVE II I421V in yarrow
- 6 TIMBER GROVE II I421V in hemlock
- 7 RESTORED I0564 in noteworthy
- 8 RUBBER BASE in slate 00066
- 9 BENJAMIN MOORE PAINT in Stonington Gray 2124-40
- 10 BENJAMIN MOORE PAINT in White OC-151

designed by

KALEY HENRY

Interior Design Intern

[CUSTOMIZE & ORDER PREMIX >](#)

COORDINATING PALETTE / GOVERNMENT



- 1 WASTE KNOT I0680 in fresco
- 2 WASTE KNOT I0680 in mistral
- 3 DISSIPATE I334V in peat
- 4 SELVAGE I0584 in suede
- 5 ENRICH PLANK I447V in motivate
- 6 ADMIX I508V in classic
- 7 DECIDE I0439 in mica
- 8 RUBBER BASE in warm grey 00098
- 9 BENJAMIN MOORE PAINT in White Dove OC-17
- 10 BENJAMIN MOORE PAINT in Wish AF-680

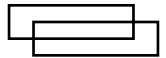
designed by

MORGAN ROSENBAUM

Interior Design Service Specialist

[CUSTOMIZE & ORDER PREMIX >](#)

PRODUCT SPECS /



ReWorx
hybrid tile
12" x 48"

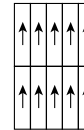
PRODUCT SPECIFICATIONS

style / 10680

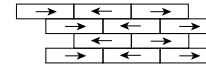
product size	12" x 48" 30.48 cm x 121.92 cm
construction	non-woven composite
yarn weight	75 oz./yd ² 2542.93 g/m ²
total thickness	0.155" 3.94 mm
backing type	ReWorx™

INSTALLATION METHODS

MONOLITHIC



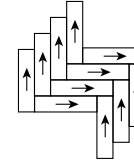
BRICK



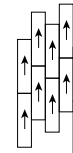
ASHLAR



HERRINGBONE



STAGGER



WASTE KNOT in encaustic

For full specifications and color, please [visit this collection on patcraft.com](https://www.patcraft.com).