







## A Shared Language

Since 2014, Designtex has collaborated with the British textile design studio, Wallace Sewell, to bring color, craft and construction to the fore of textile creation. Founded in 1992 by Harriet Wallace-Jones and Emma Sewell, the studio's diverse portfolio ranges from designing textiles for the London Transport System's Elizabeth line to creating their own artistic collection of scarves, throws and home accessories.













River Lea 3084-401,901  
The Thames 3066-401,802



## River Lea + The Thames

Named after two well-known rivers in Wallace Sewell's native England, River Lea is a fine, striae-esque stripe while The Thames is composed of bolder and thicker stripes. They are offered in intentionally coordinated colorways that speak to Wallace Sewell's joyous and unexpected color combinations.





The image features two cylindrical ottomans on a light-colored wooden floor. The ottoman on the left is covered in a fabric with a pattern of wide, vertical stripes in shades of beige, cream, and light brown, with thin lines of yellow and grey. The ottoman on the right is covered in a fabric with a pattern of fine, vertical stripes in shades of grey, blue, and yellow. The background is a plain, light-colored wall.

A dynamic duet of  
coordinating striped  
patterns

River Lea 3084-101  
The Thames 3066-101





# 3066

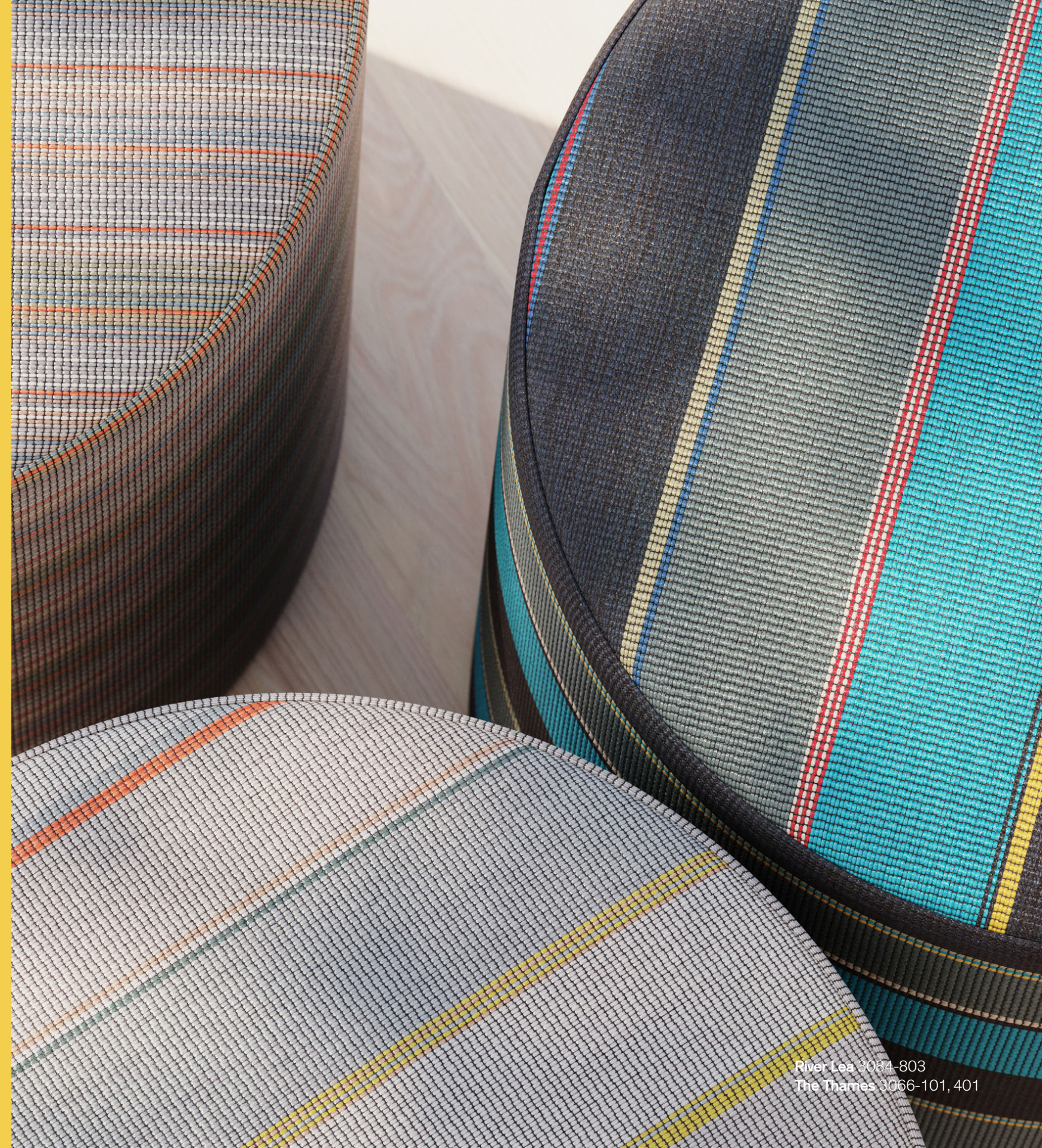
## The Thames

A big and bold stripe with a 32-inch repeat with tailored details created by the round quality of the colored yarns.

- 5 colorways
- 87% Polyester, 13% Acrylic
- HPD
- LEED
- WELL
- Oeko-Tex
- Water-based/Solvent (WS)
- Bleach (10:1)
- No PFAS, No Antimicrobials, No Flame Retardants
- 100,000 Wyzenbeek double rubs (CD)



A high performance,  
easily cleanable and  
finish-free construction



River Lea 3084-803  
The Thames 3066-101, 401





# 3084 River Lea

A finely detailed stripe with an equally subtle texture that is versatile and easy to work with. Individual colors of a round filament yarn creates a striated effect when woven.

- 6 colorways
- 86% Polyester, 14% Acrylic
- HPD
- LEED
- WELL
- Oeko-Tex
- Water-based/Solvent (WS)
- Bleach (10:1)
- No PFAS, No Antimicrobials, No Flame Retardants
- 100,000 Wyzenbeek double rubs (CD)

River Lea 3084-101, 808





Wallace Sewell yarn windings that function as studies for their collection development.



Thanks to a deep understanding of how cloth comes together, our intuitive partnership benefits from a shared creative language and shorthand, which results in a dynamic collection that brings a sartorial sensibility to upholstery.





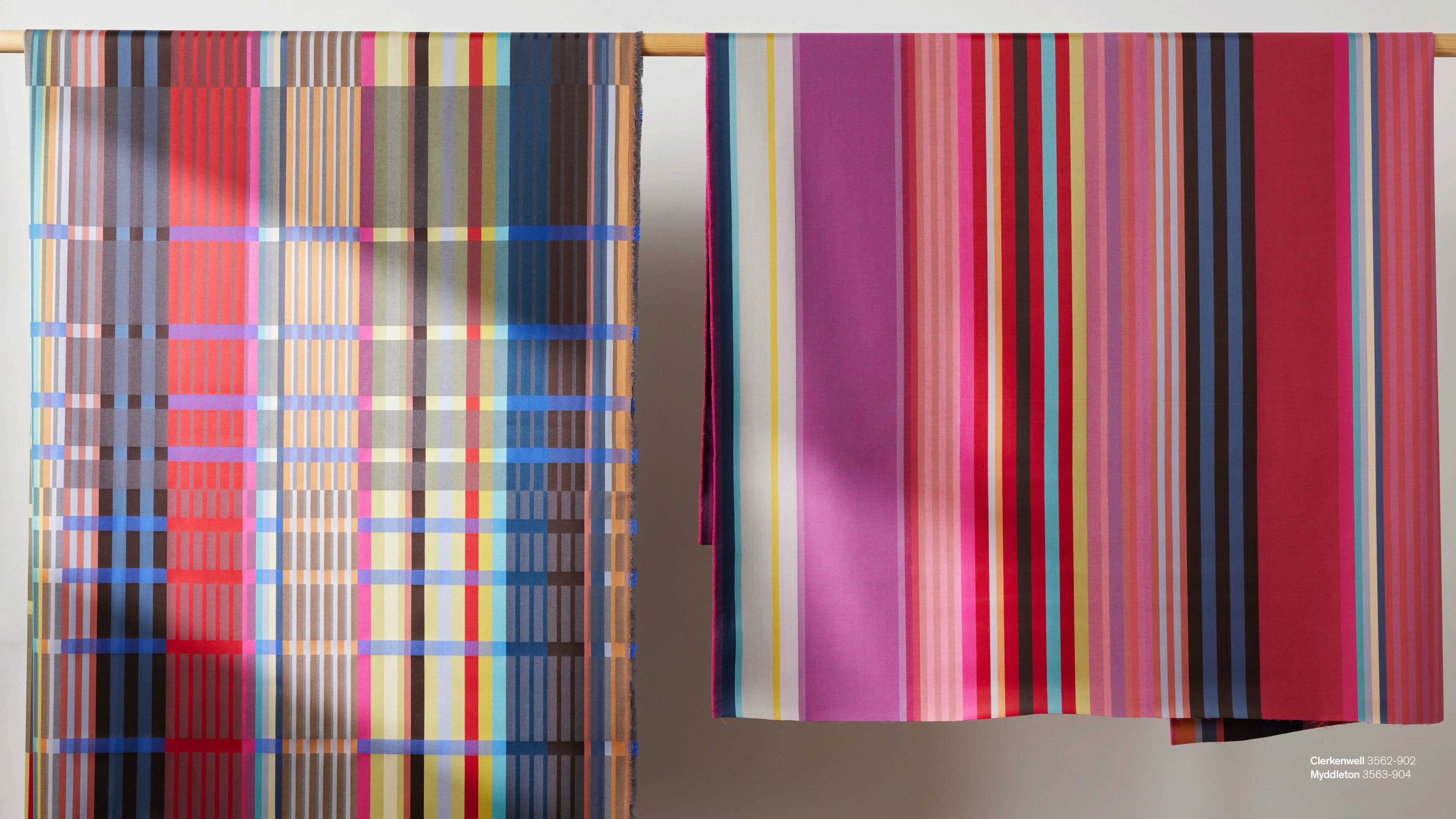






From captivating oversized plaids to asymmetric checks and bold stripes that all showcase Wallace Sewell's unique approach to color, the patterns in our ongoing collaborative collection unites Wallace Sewell's creativity with our expertise in construction and performance to present what's possible in upholstery textiles.



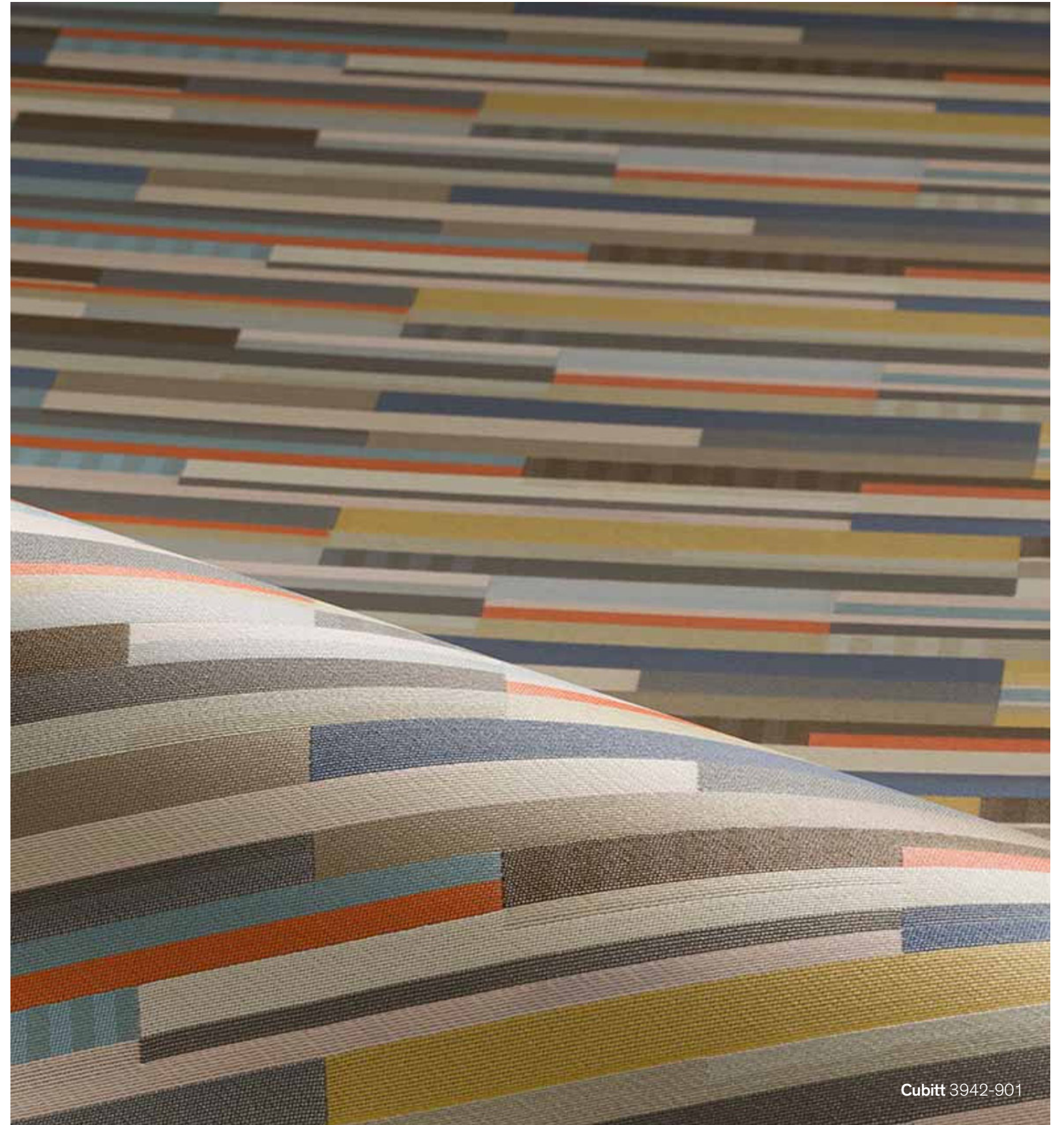


Clerkenwell 3562-902  
Myddleton 3563-904



# 3942 Cubitt

- 6 colorways
- 25% Nylon (Solution Dyed)  
75% Polyester (Postconsumer Recycled)
- HPD
- LEED
- WELL
- Water-based/Solvent (WS)
- Bleach (10:1)
- No PFAS, No Antimicrobials, No Flame Retardants
- 250,000 Wyzenbeek double rubs









# 3563 Myddleton

- 4 colorways
- 100% Lambswool
- HPD
- LEED
- Oeko-Tex
- Solvent (S)
- No PFAS, No Antimicrobials, No Flame Retardants
- 40,000 Martindale cycles



Myddleton 3563-901



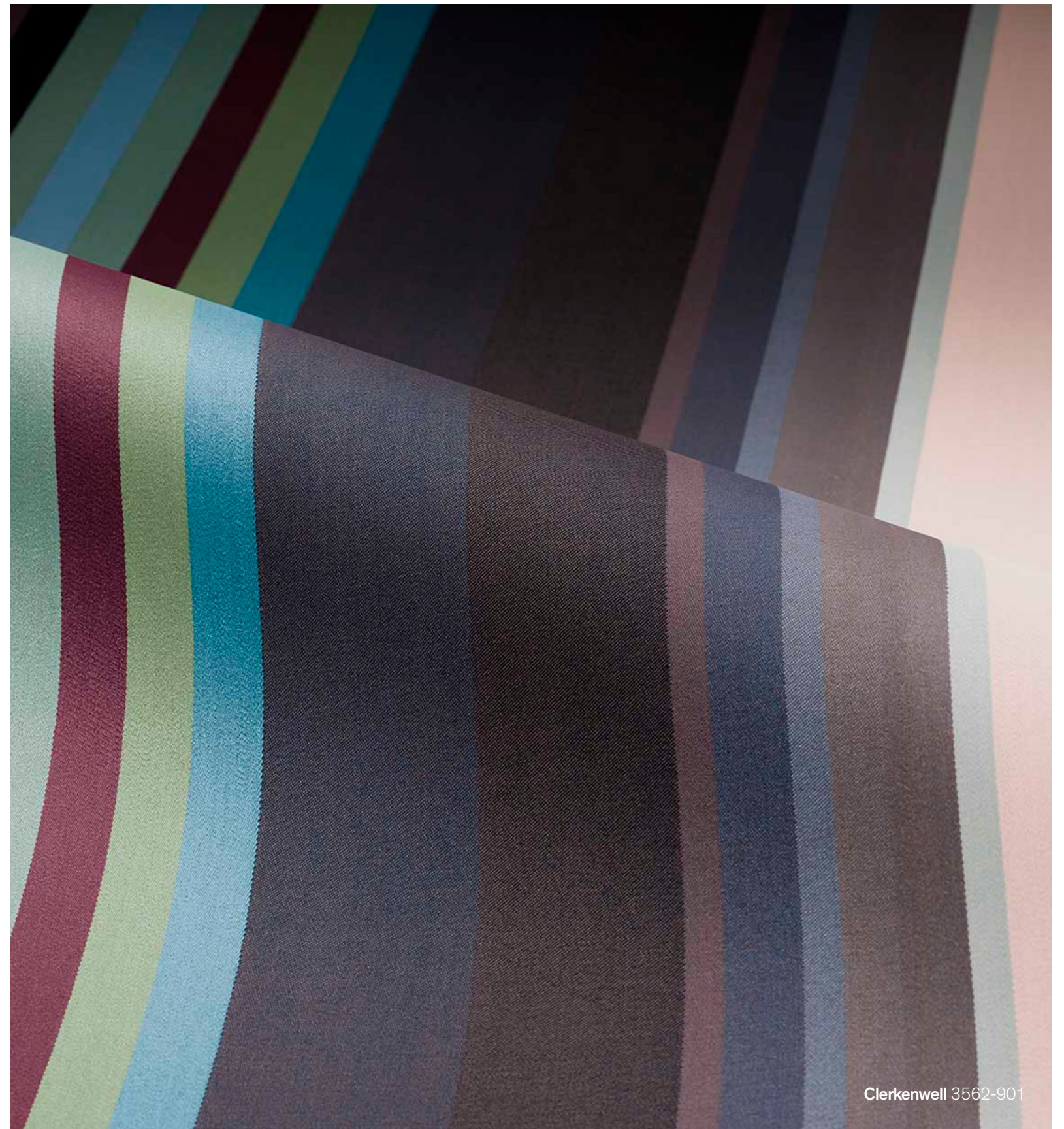


Clerkenwell 3562-000  
Myddleton 3563-901  
Velvet Corduroy 3012-401



# 3562 Clerkenwell

- 5 colorways
- 100% Lambswool
- HPD
- LEED
- Oeko-Tex
- Solvent (S)
- No PFAS, No Antimicrobials, No Flame Retardants
- 40,000 Martindale cycles

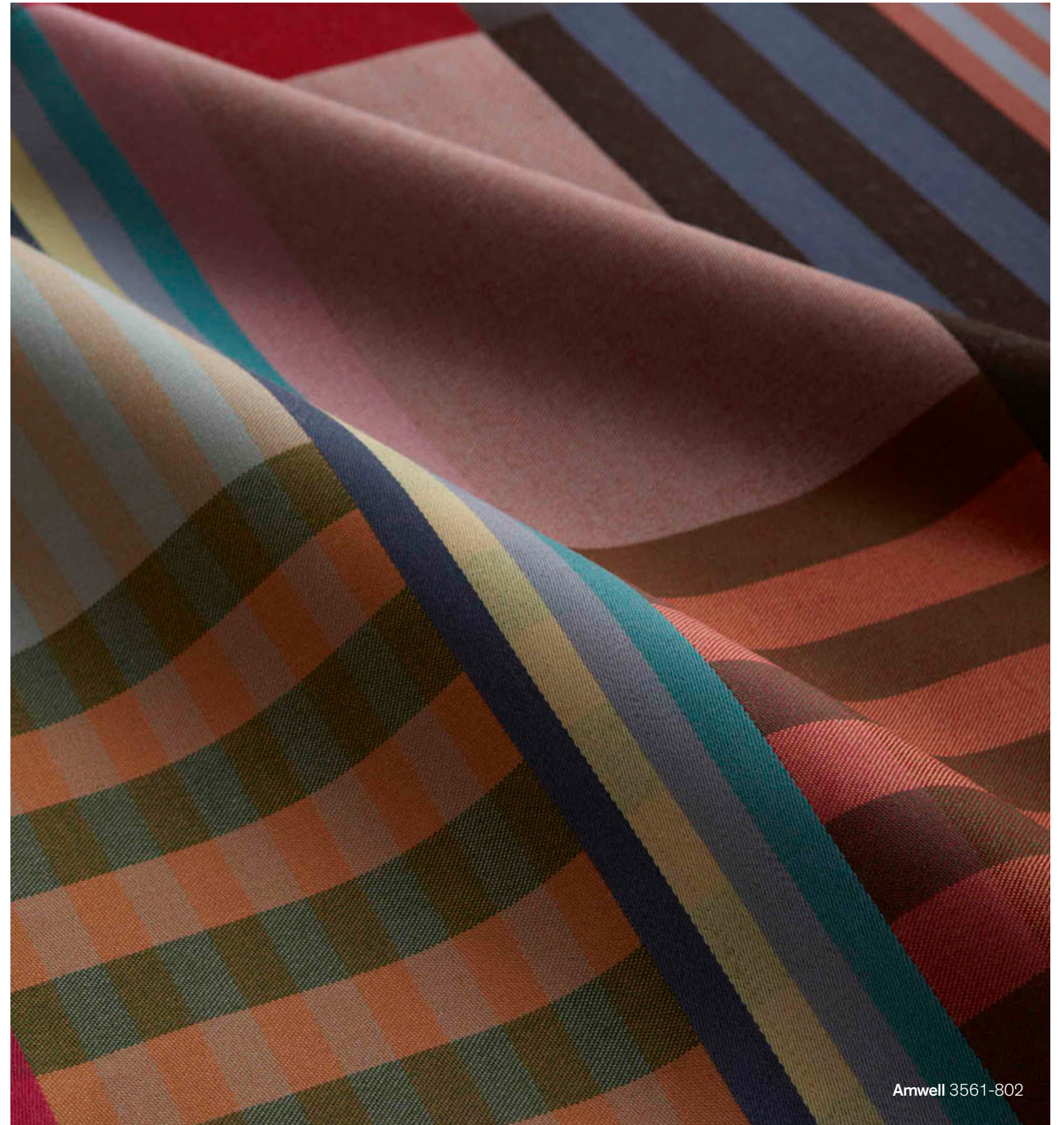


Clerkenwell 3562-901



# 3561 Amwell

- 2 colorways
- 100% Lambswool
- HPD
- LEED
- Oeko-Tex
- Solvent (S)
- No PFAS, No Antimicrobials, No Flame Retardants
- 40,000 Martindale cycles







Clerkenwell 3562-904  
Myddleton 3563-903





**DESIGNTex**

[designtex.com](https://www.designtex.com)

Please reference our website for the most up-to-date information as product specifications may change.