

privacy on demand

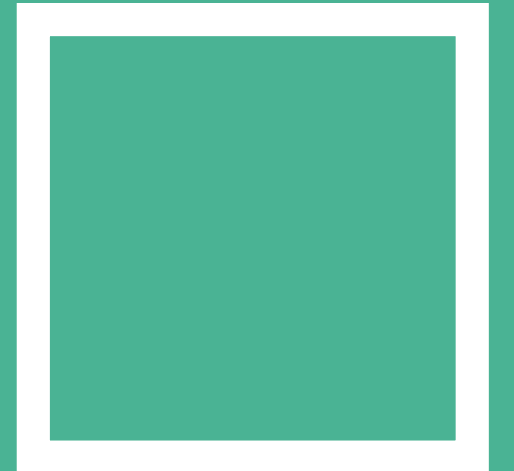
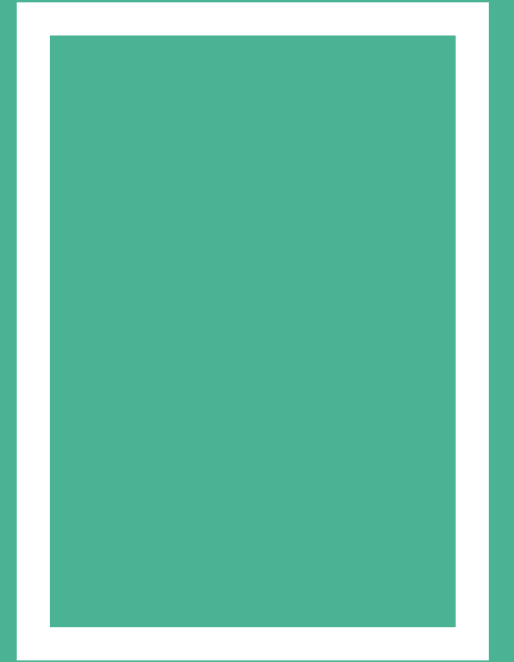
tekunion architectural interiors

privacy

on

demand

defined privacy and comfort





pod

POD transcends the conventional workspace, offering an unparalleled environment where individuals can work better, ensure privacy, and collaborate seamlessly. Its carefully curated aesthetics and acoustics create a space conducive to productive, focused work. Supported by advanced technology, the freestanding design of POD allows for easy relocation, providing independence from building architecture and meeting evolving company needs.



privacy

PODs are designed to support the individual and small groups when focus, privacy and comfort are needed from the open-plan environment. Hard external surfaces ensure sound isolation, while fabric and micro-perforated fascias on the interior minimize sound reflectivity.



flexibility

A broad range of footprints allows for seamless integration into any environment. The different sizes can be multiplied on various floorplans, ensuring office productivity is fully optimized.



comfort

POD interiors fully integrate power, technology and ergonomics for an overall intuitive experience. With various worksurface options, power receptacles and a motion sensor that activates lights and ventilation fans, PODs are a space to feel comfortable and connected.



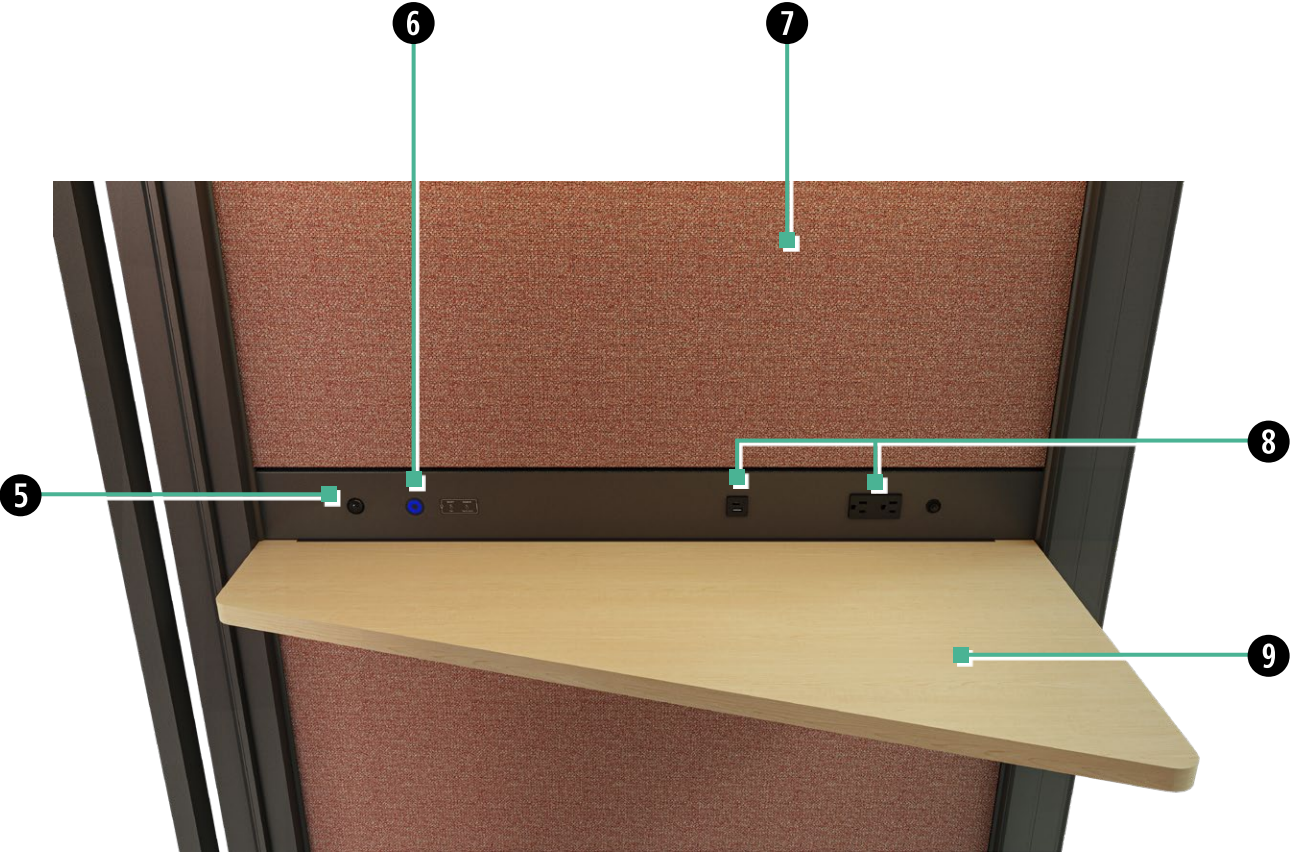
dynamic planning

Our PODs are intelligently designed to nest together, allowing for efficient use of space. By placing PODs together, you can create dynamic work environments that adapt to your needs. Whether you're looking to maximize collaboration or provide private work areas, POD offers the flexibility to create the perfect workspace layout.



tek booth

Tek Booth provides a secluded space for short-term privacy needs, offering a seamless user experience with integrated power and ergonomic features. Its design ensures sound isolation, making it ideal for quick phone calls or impromptu virtual meetings.



- 1 Dimmable task light with optional valance
- 2 Door closer with hold open
- 3 Ventilation fan
- 4 Glass or solid fabric-wrapped back wall
- 5 Occupancy sensor for fans and light
- 6 Light dimmer switch
- 7 Acoustic fabric-wrapped side walls
- 8 Duplex outlet and USB-A / USB-C
- 9 Worksurface

tek booth features

Sizing and Orientation

- Exterior dimensions: 48"W × 48"D × 90"H
- Interior dimensions: 40"W × 40"D × 86"H
- Left or right orientation available

Finishes

- Frame, door and interior metal: Ebony or Anthracite
- Corner trim metal: painted Mica, Accent and Foundation
- Exterior fascia: laminate, Flintwood and backpainted glass
- Interior fascia: fabric (compatible with Teknion's Architectural fabrics program), sides acoustic tackable
- Interior base and ceiling: micro-perforated metal
- Worksurface: Foundation laminate and Flintwood

Grain and Material Direction

- Vertical grain direction
- Off-the-bolt fabric direction

Doors

- Framed pivot door: 10mm clear tempered
- Closer with hold-open device or automated operator with hand activator
- Magnetic catch

Glass Fascias

- Double-glazed 6mm tempered glass
- Clear and frosted finishes

Electrical and Technology

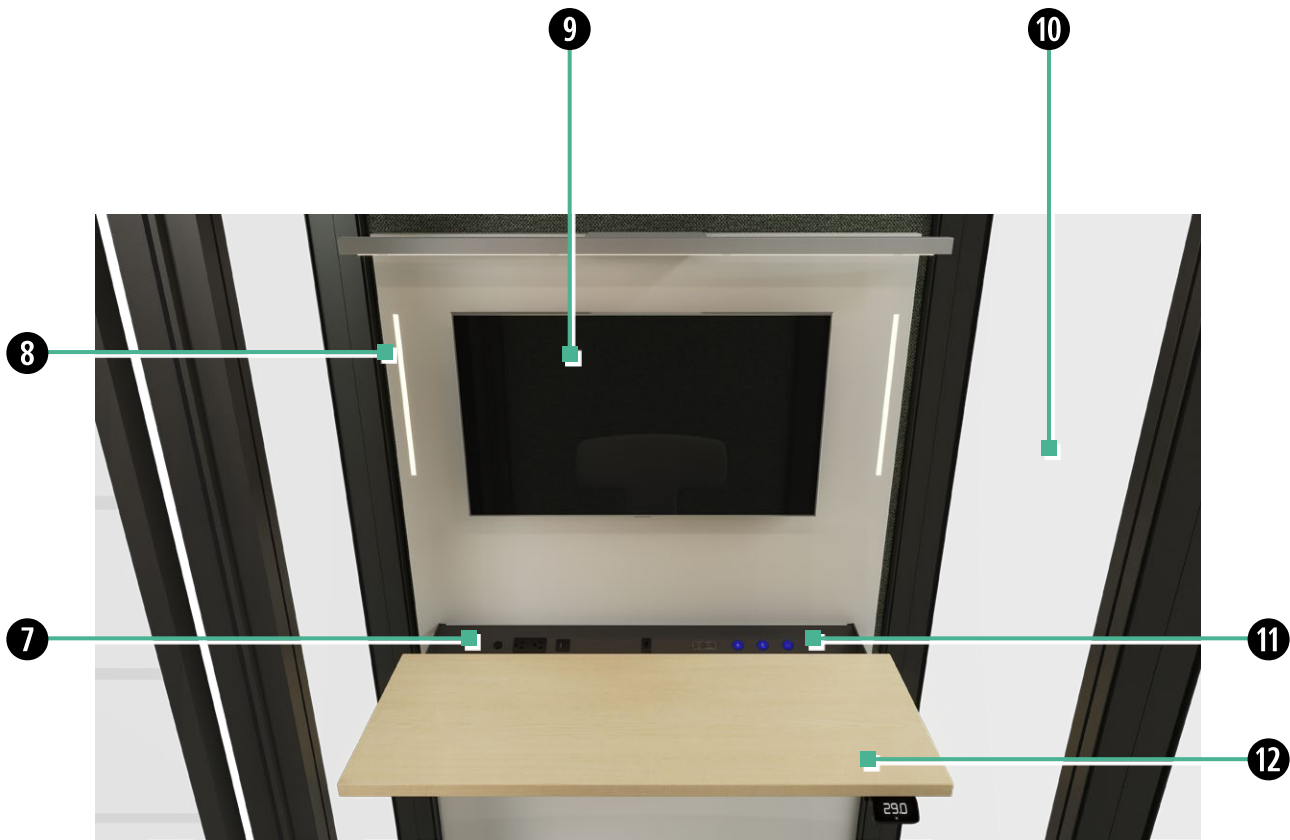
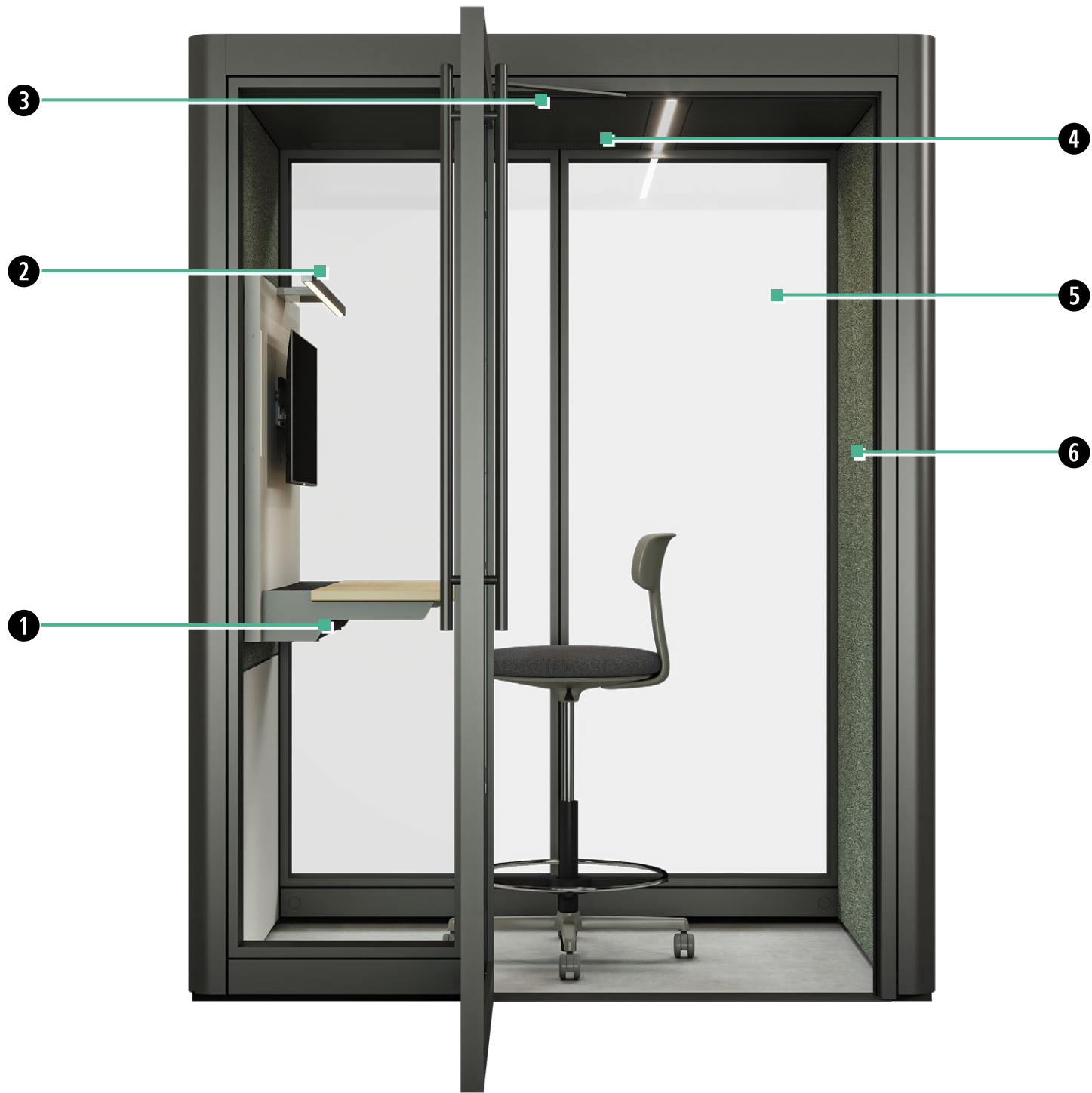
- Occupancy sensor
- Two ceiling fans rated at 58 CFM each
- Power duplex and USB-A / USB-C
- Fully-dimmable task light
- Base feed and ceiling feed
- Plug-in and hardwired electrics





tek work

Tek Work is a versatile solution designed for maximum user comfort and long-duration privacy needs, enhancing focus and productivity. The height-adjustable worksurface improves ergonomics for longer working sessions. It also offers multiple lighting options for effective video calls, including the facelight for high-quality on-screen appearance, the task light for focused work illumination, and the ceiling light for ambient lighting.



- 1 Occupancy sensor for fans and light
- 2 Dimmable task light
- 3 Door closer with hold open
- 4 Ventilation fans
- 5 Glass or Solid (fabric or laminate) back wall
- 6 Acoustic fabric-wrapped side walls
- 7 Duplex outlet and USB-A / USB-C
- 8 Dual-face lights
- 9 Monitor mount
- 10 Solid (fabric and laminate) or glass back wall option
- 11 Light dimmer switches
- 12 Height-adjustable worksurface

tek work features

Sizing and Orientation

- Exterior dimensions: 70-1/8"W × 48"D × 90"H
- Interior dimensions: 62-1/8"W × 40"D × 86"H
- Left or right orientation available

Finishes

- Frame, door and interior metal: Ebony or Anthracite
- Corner trim metal and monitor shroud: painted Mica, Accent or Foundation
- Exterior fascia: laminate, Flintwood and backpainted glass
- Interior side fascias: fabric (compatible with Teknion's Architectural fabrics program)
- Interior fascia below height-adjustable worksurface: laminate
- Interior back fascia: glass, laminate, or fabric-wrapped
- Base fascia and ceiling: micro-perforated metal
- Worksurface: Foundation laminate and Flintwood

Grain and Material Direction

- Vertical grain direction
- Off-the-bolt fabric direction

Doors

- Framed pivot door: 10mm clear tempered
- Closer with hold-open device or automated operator with hand activator
- Magnetic catch
- Optional 10" kickplate

Glass Fascias

- Double-glazed 6mm tempered glass
- Clear and frosted finishes

Electrical and Technology

- Occupancy sensor
- Four ceiling fans rated at 58 CFM each
- Power duplex and USB-A / USB-C
- Fully-dimmable ceiling and task light
- Base feed and ceiling feed
- Plug-in electrics only

Electrical and Technology (height-adjustable worksurface only)

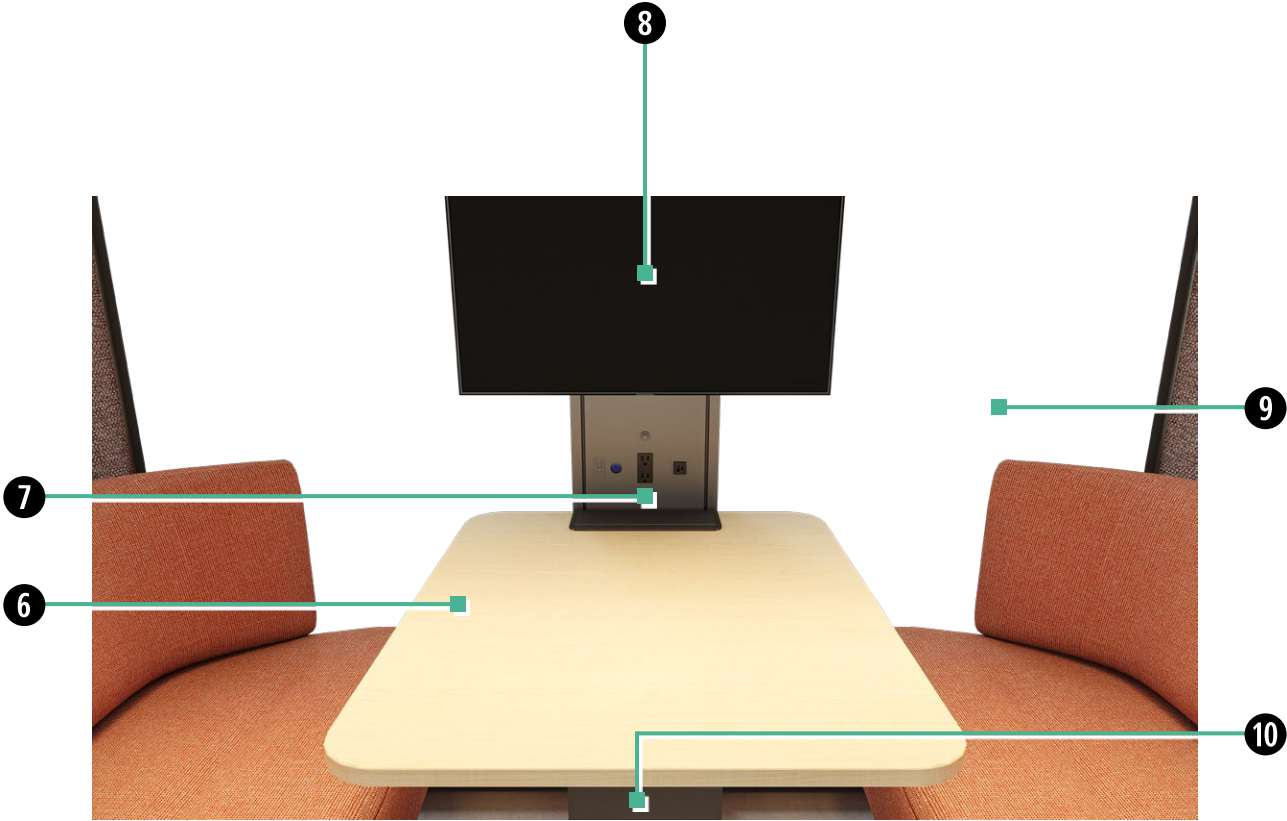
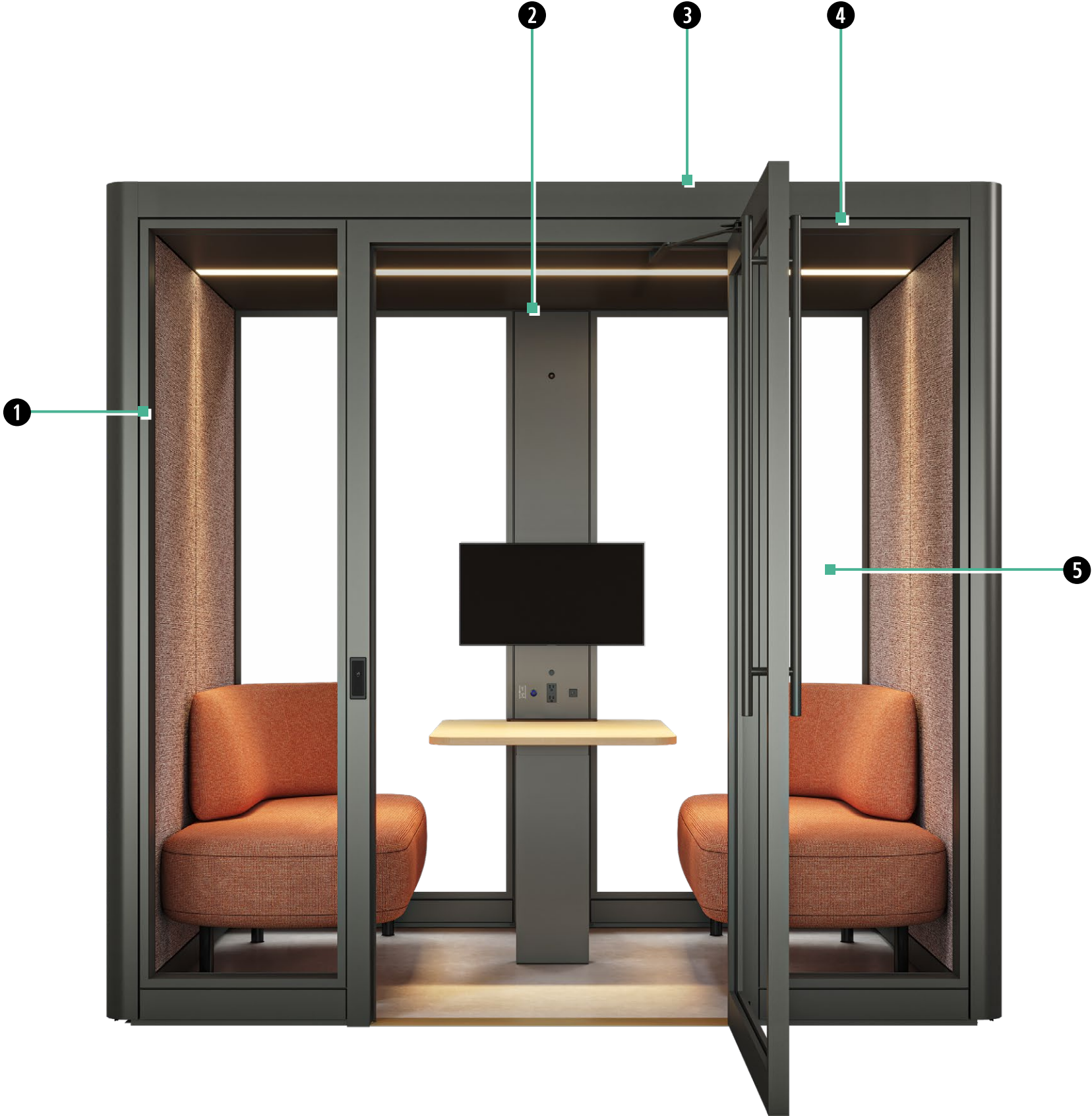
- Fully dimmable face light
- HDMI monitor port
- USB-C 65W option





tek room

Tek Room is designed to provide long-duration privacy for small groups and focused privacy for individuals. It features a dimmable lighting system for personalized environments and supports accessibility and safety needs, making it ideal for diverse workplace settings. Additionally, safety features such as the ability to seamlessly retrofit fire suppression systems further enhance its functionality.



- 1 Acoustic fabric-wrapped side walls
- 2 Occupancy sensor
- 3 Door closer with hold open
- 4 Dimmable ceiling light
- 5 Space for four users and furniture
- 6 Worksurface
- 7 Duplex outlet and USB-A / USB-C
- 8 Monitor mount
- 9 Glass or solid (fabric or laminate) back wall
- 10 Multiple worksurface height options

tek room features

Sizing and Orientation

- Exterior dimensions: 96"W × 70-1/8"D × 90"H
- Interior dimensions: 88"W × 62-1/8"D × 86"H
- Left or right orientation available

Finishes

- Frame, door and interior metal: Ebony or Anthracite
- Corner trim metal: painted Mica, Accent and Foundation
- Exterior fascia: laminate, Flintwood and back-painted glass
- Interior side fascias: fabric (compatible with Teknion's Architectural fabrics program), sides acoustic tackable
- Interior back fascia: glass, laminate, or fabric-wrapped
- Base fascia and ceiling: micro-perforated metal
- Worksurface: Foundation laminate and Flintwood

Doors

- Framed pivot door: 10mm clear tempered
- Closer with hold-open device or automated operator with hand activator
- Magnetic catch
- Optional 10" kickplate

Glass Fascias

- Double-glazed 6mm tempered glass
- Clear and frosted finishes

Electrical and Technology

- Occupancy sensor
- Four ceiling fans rated at 58 CFM each
- Power duplex and USB-A / USB-C
- Fully-dimmable ceiling light
- Base feed and ceiling feed
- Plug-in and hardwired electrics
- Electric height: 26", 29" and 42" AFF (nominal)





Enhanced Lighting

Optimize calls with face light for on-screen appearance, task light for focused work, and ceiling light for ambient comfort with Tek Work.



Integrated Power

Seamlessly integrates power, technology, and ergonomics with power receptacles, motion sensor-activated task lighting, and ventilation fans.



Seamless Accessibility

PODs feature a hand activator for touch-free, effortless door opening, designed with accessibility in mind.



Adaptable Worksurface

Enhance ergonomics and increase comfort with Tek Work's height adjustable worksurface or monoleg height adjustable worksurface, perfect for longer working sessions.



Furniture Compatibility

Enhance PODs with a wide selection of Teknion furniture. The open-floor design ensures wheeled furniture glides effortlessly across the building’s surface, providing flexibility and ease of movement.



Hands-Free Access

The automated door opener is available as an option for all POD products, allowing for hands-free access with a simple hand gesture over the door activator.



Flexible Configurations

Tek Work and Tek Room provide a variety of configurations, offering different worksurface options and electrics to accommodate diverse working styles.



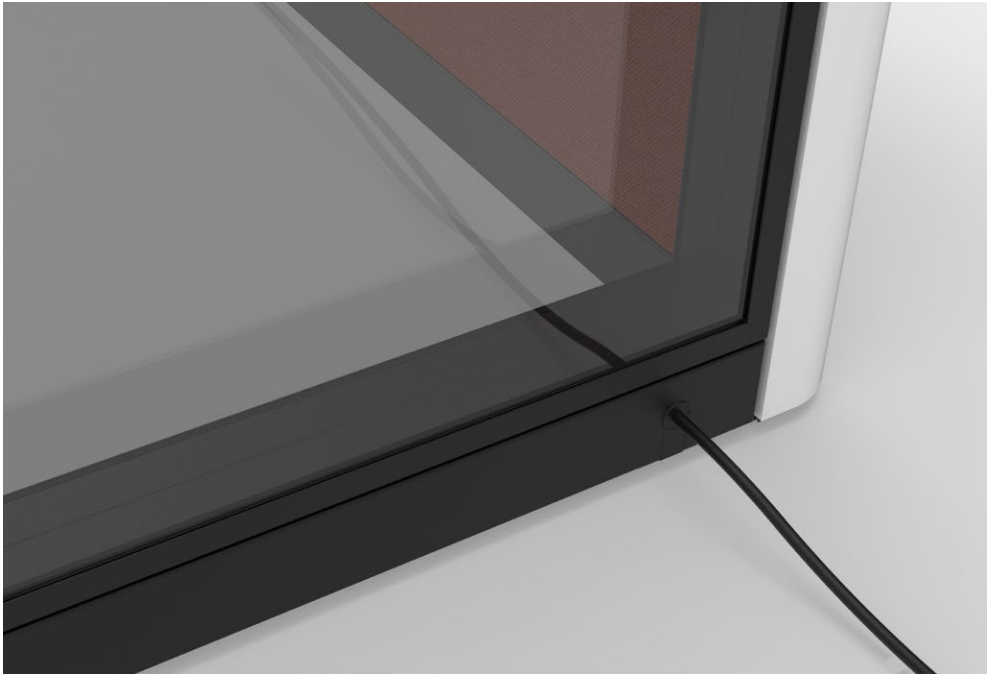
Adaptive Task Lighting

The lighting is fully dimmable, allowing users to adjust the brightness for focused work in Tek Booth or for a better on-screen appearance during video calls in Tek Work.



Corner Trim Options

Choose from square or round styles for corner trim, offering increased aesthetic flexibility and design choices.



Plug-In Electrical

All PODs are offered with a plug-in version for easy installation. Power is routed out of the unit either from the base or ceiling, providing greater site versatility.



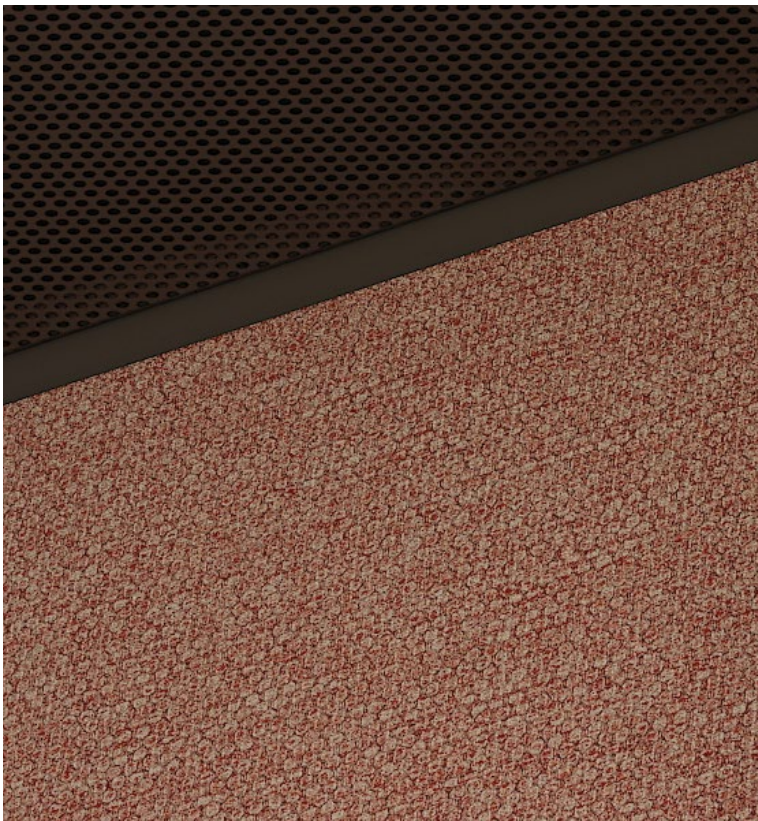
Secure Magnetic Catch

The magnetic catch ensures a secure seal with the door frame, maximizing acoustic performance.

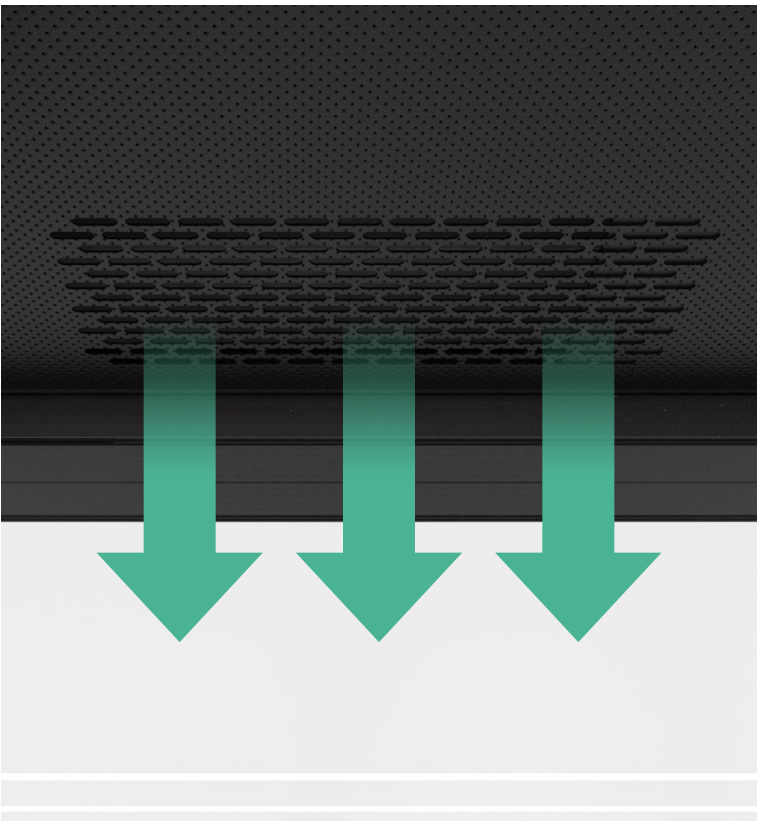


Door Closer

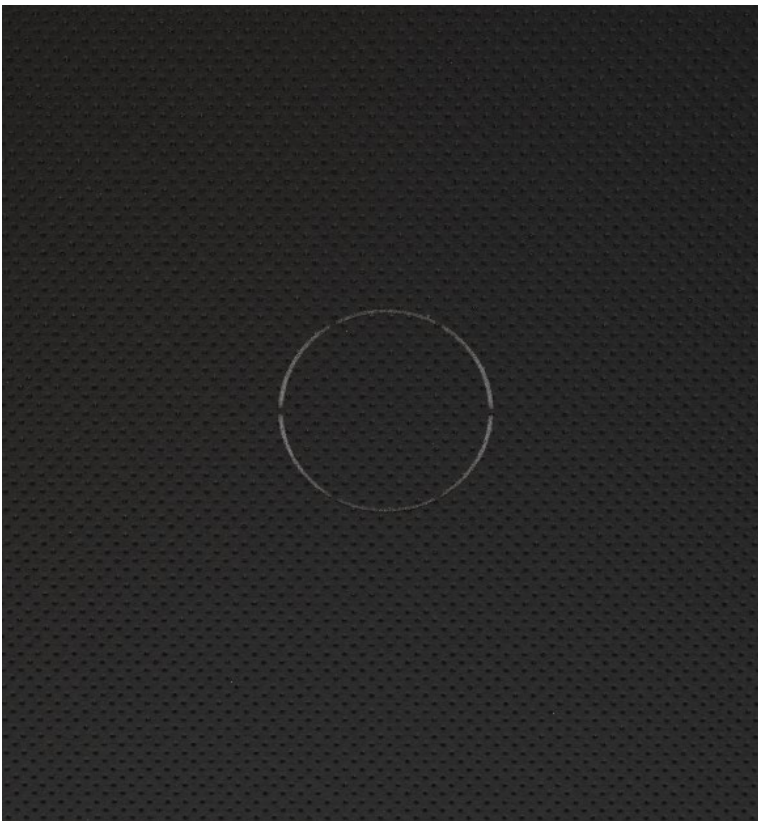
The door closer speed can be adjusted and includes a hold-open feature when open at a 90-100 degree angle.



Acoustics
PODs are engineered with a combination of wall materials, insulation, gaskets, and seals to provide the optimum level of acoustic privacy.



Ventilation
Ventilation intake is facilitated by low-noise fans integrated into the micro-perforated ceiling fascia.



Fire Safety
The micro-perforated ceiling fascia comes standard with a punch-out preparation for easy sprinkler installation.

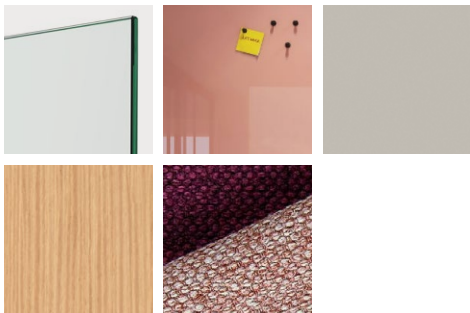


Accessibility
The open-floor design of PODs enables easy movement for furniture with wheels. The door threshold and spacious interior of the Tek Room model accommodate wheelchair access.

finish regions

Back

- Glass
- Backpainted Glass (Exterior)
- Fascia Laminate (Interior or Exterior)
- Flintwood (Exterior)
- Architectural Fabric (Interior)



Exterior Sides

- Backpainted Glass
- Fascia Laminate
- Flintwood



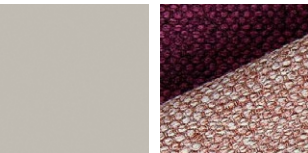
Corner Trims

- Foundation Paint
- Mica Paint
- Accent Paint



Interior Side Walls

- Fascia Laminate
- Architectural Fabric



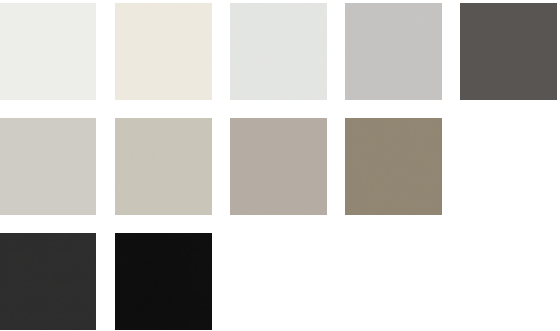
Worksurface

- Foundation Laminate (select Tek Work regions)
- Flintwood

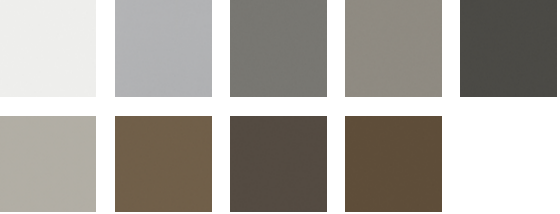


Paints

Foundation



Mica

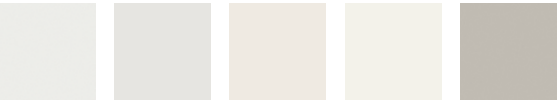


Accent

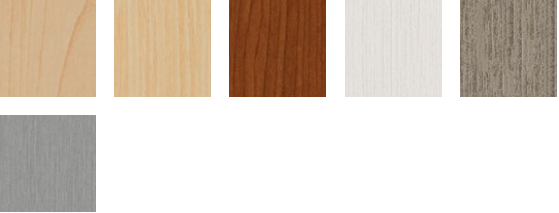


Fascia Laminates

Solid



Woodprint and Abstract

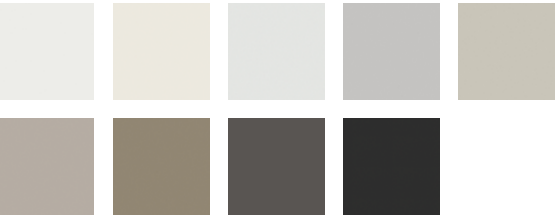


Flintwood

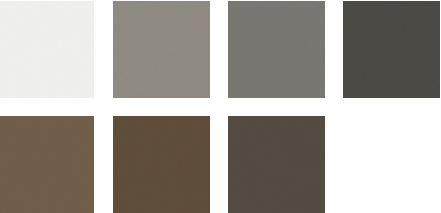


Backpainted Glass

Solid



Mica

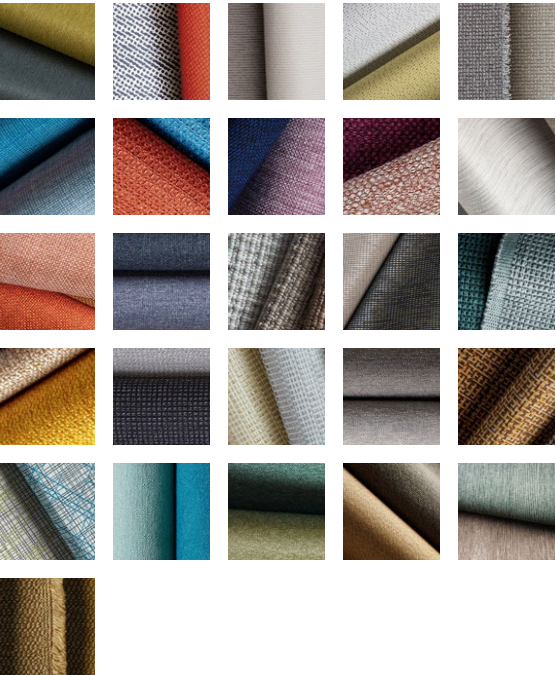


Accent



Architectural Fabrics

**more colourways available for all fabrics*



teknion architectural interiors