

teknion architectural interiors



tek vue

value & simplicity

Tek Vue™ is a glass office-front system that responds to the essential needs of today's workplace. The system focuses on single-center glazing and thin-profile frames, while providing effortless integration with conventional construction and existing Teknion wall programs.

Tek Vue wall and door programs are built on the concept of a universal platform, which re-envision how a system can be specified, planned and installed within the evolving world of interior architecture.

features

value through simplicity

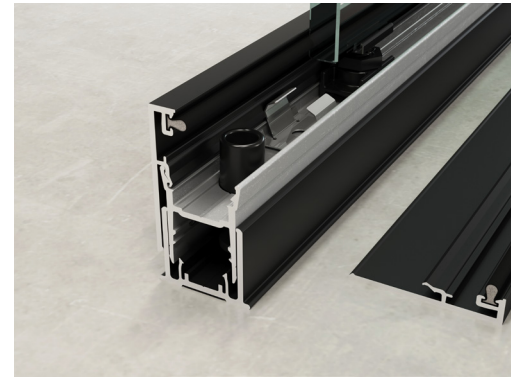
- Tek Vue offers the essential elements; a single-center glass wall program and pared down, yet progressive, pivot and barn door program. The system is easy to install, uses materials efficiently and offers flexibility in specification.

small footprint, large application

- Tek Vue is optimized to integrate with conventional building construction as well as Altos and Focus programs to satisfy budget or performance requirements.
- Thin wall and door profiles take up little real estate and respond to varying building conditions through effective site accommodation. Tek Vue also offers a comprehensive articulating and electrical program, as well as variable angle and curved fascia capabilities.

universal platform

- Tek Vue framing elements are universal in nature to streamline on-site staging and accelerate installation procedures.
- Pivot and barn door frames are not specific to individual door leafs, hardware or ceiling heights, thereby allowing easy placement anywhere on the floor-plan.
- All wall and door framing elements are cut on site from common lengths, allowing flexibility with any on-site discrepancies.



specifications

sizing

- Ceiling heights from 84" - 120" high in $\frac{1}{16}$ " increments
- Fascia widths 12" - 48" in $\frac{1}{16}$ " increments
- Base and ceiling frame $1\frac{3}{8}$ " thick by $2\frac{3}{8}$ " nominal height
- Horizontal frame cut to length on site up to lengths of 121"

building accommodation

- Ceiling adjustment range: $+\frac{3}{4}$ ", $-\frac{3}{4}$ "
- Floor adjustment range: $+\frac{1}{2}$ ", $-\frac{1}{4}$ "
- Wall start adjustment range: $+\frac{1}{4}$ ", $-\frac{1}{4}$ " (min.)

fascia offering

- Single-centered glass only

door offering

- Universal Pivot and Barn door frames
- Frameless, Framed and Solid Pivot door
- Frameless and Framed Barn door

acoustics

- Glass STC ratings up to 36 STC
- Door STC ratings up to 35 STC

glass options

- 10 and 12mm seamless straight and curved glass
- Tempered and Laminated
- Clear and Low Iron finishes

electrics

- Low profile electrics program
- Hard-wired

integration

- Drywall/base building
- Altos, Focus