



REMIX REMASTERED

Backbeat / Freestyle
Mix Tape / Bass Line



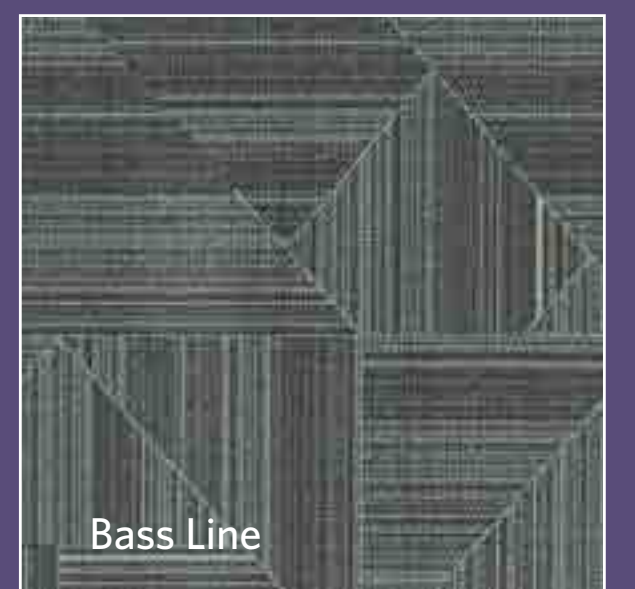
Backbeat



Freestyle



Mix Tape



Bass Line



PRICE

Milliken™

REMIX

REMASTERED

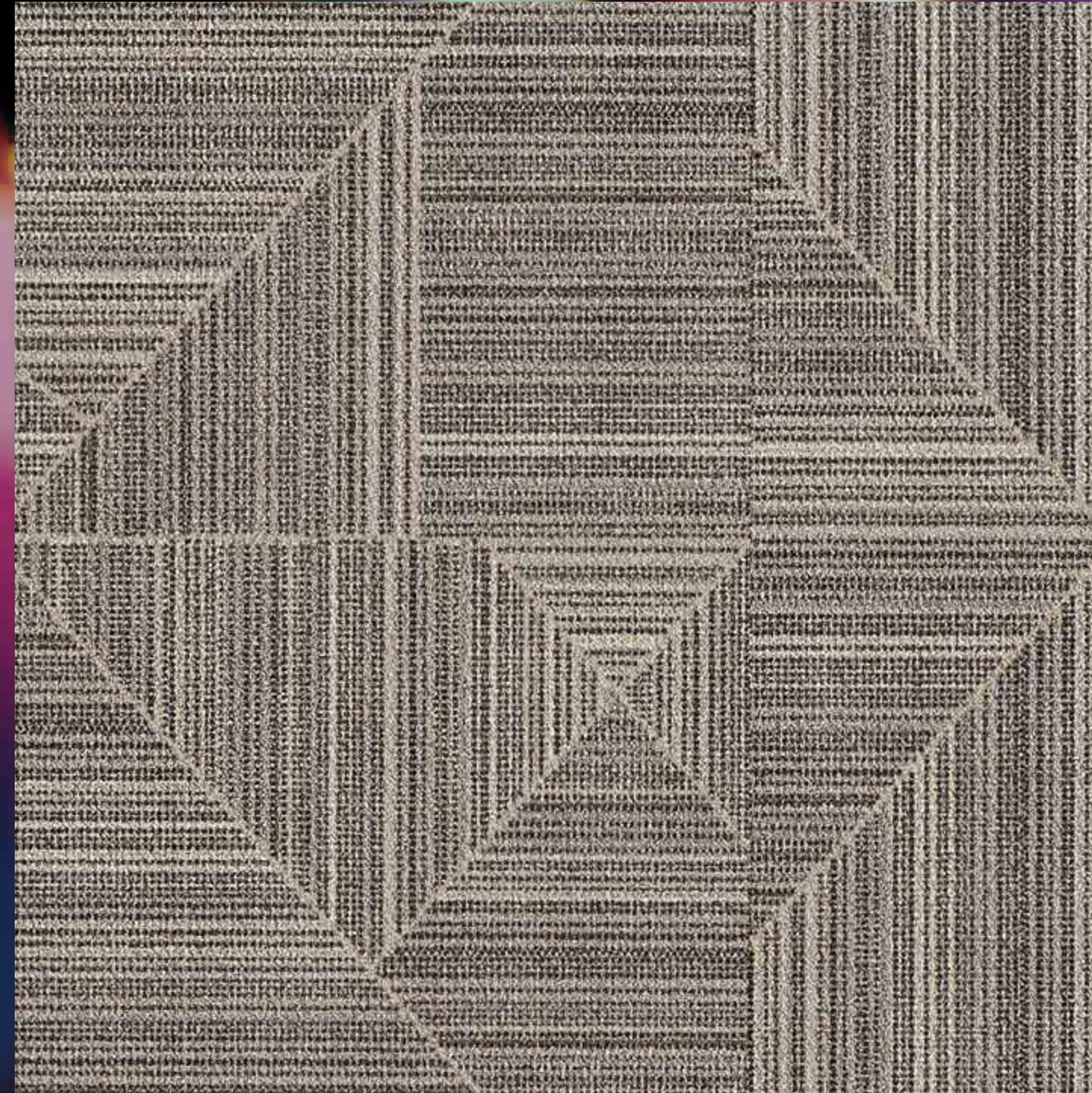
- 3 A BRAND NEW BEAT
- 8 INSTALLATIONS
- 20 CHOOSE YOUR PATTERN AND COLOR
- 26 ADD YOUR VIBE
- 27 STYLE BACKED BY PERFORMANCE



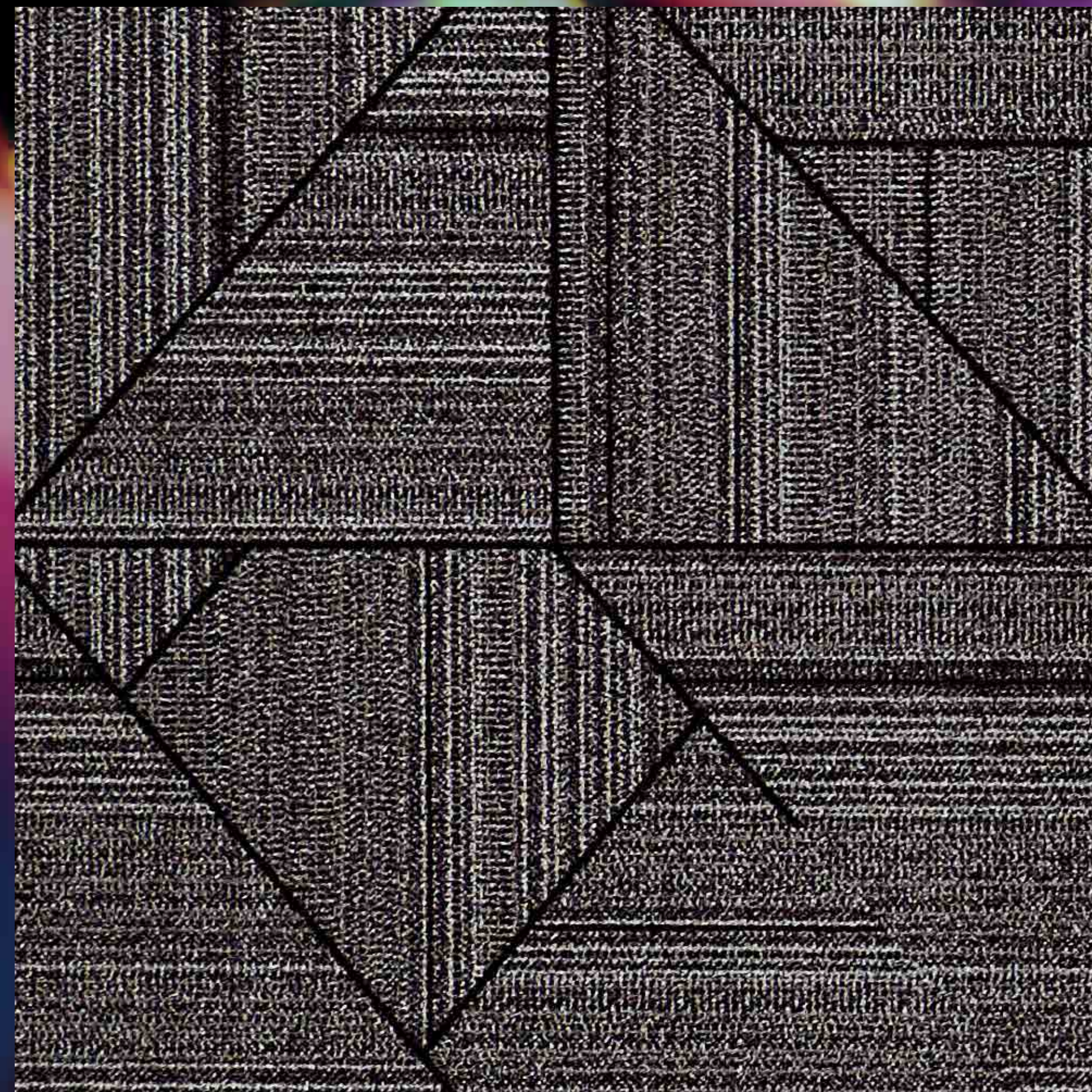


DROPPING A BRAND NEW BEAT

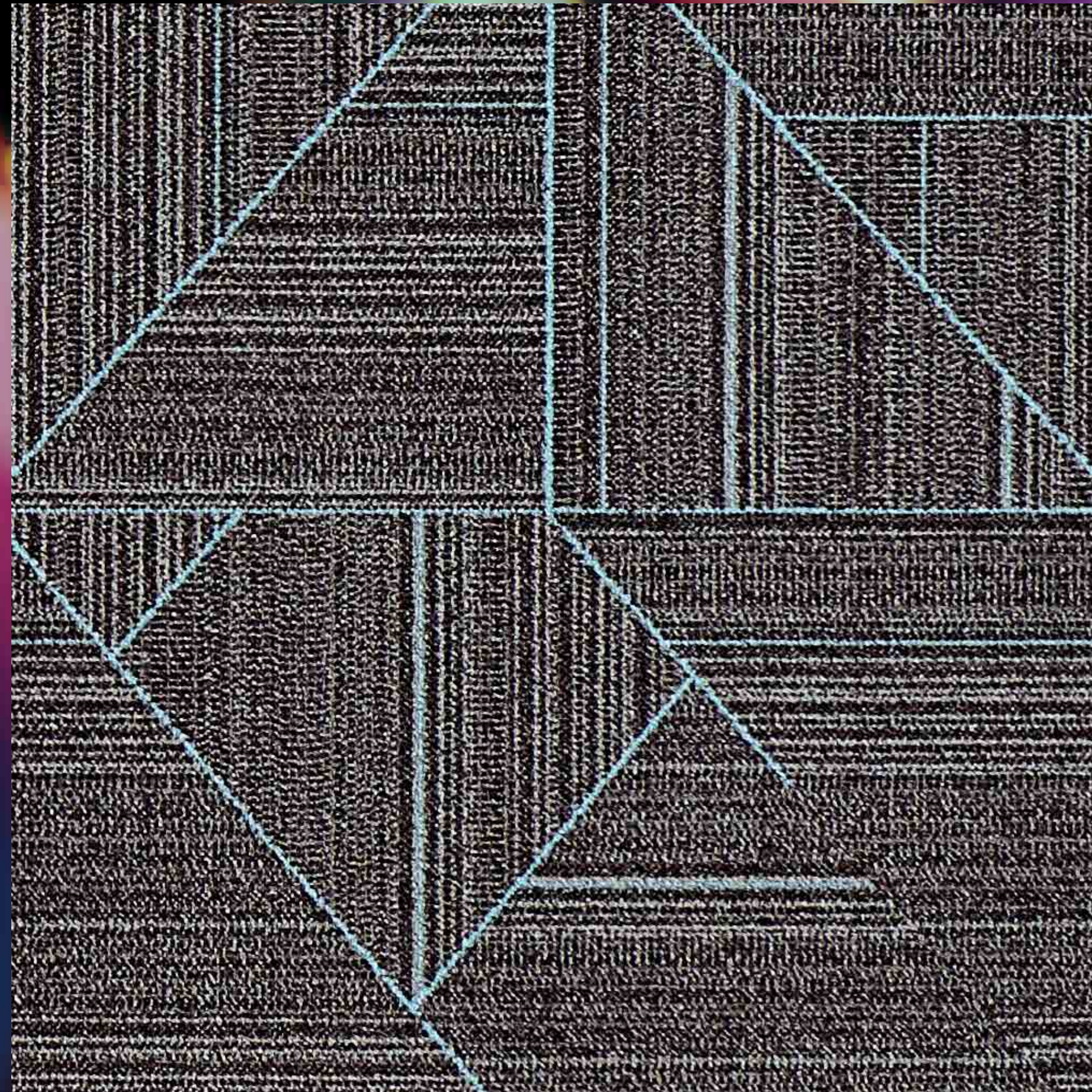
Welcome to **REMIX REMASTERED**, our new collection with a modern spin. Smoothly synthesized with 4 patterns and 24 fresh colors, **REMIX REMASTERED** makes it easy for you to create your own chart-topping single. But don't stop there — inject it with one of our 12 exclusive vibes to lay down a track that's uniquely yours. **Electrify yours now.**



PICK YOUR PATTERN



CHOOSE YOUR COLOR



ADD YOUR VIBE

Installation: 1m x 1m tiles. Monolithic.



BACKBEAT

Color: Slam Vibe: Doric



FREESTYLE

Color: Slam Vibe: Doric



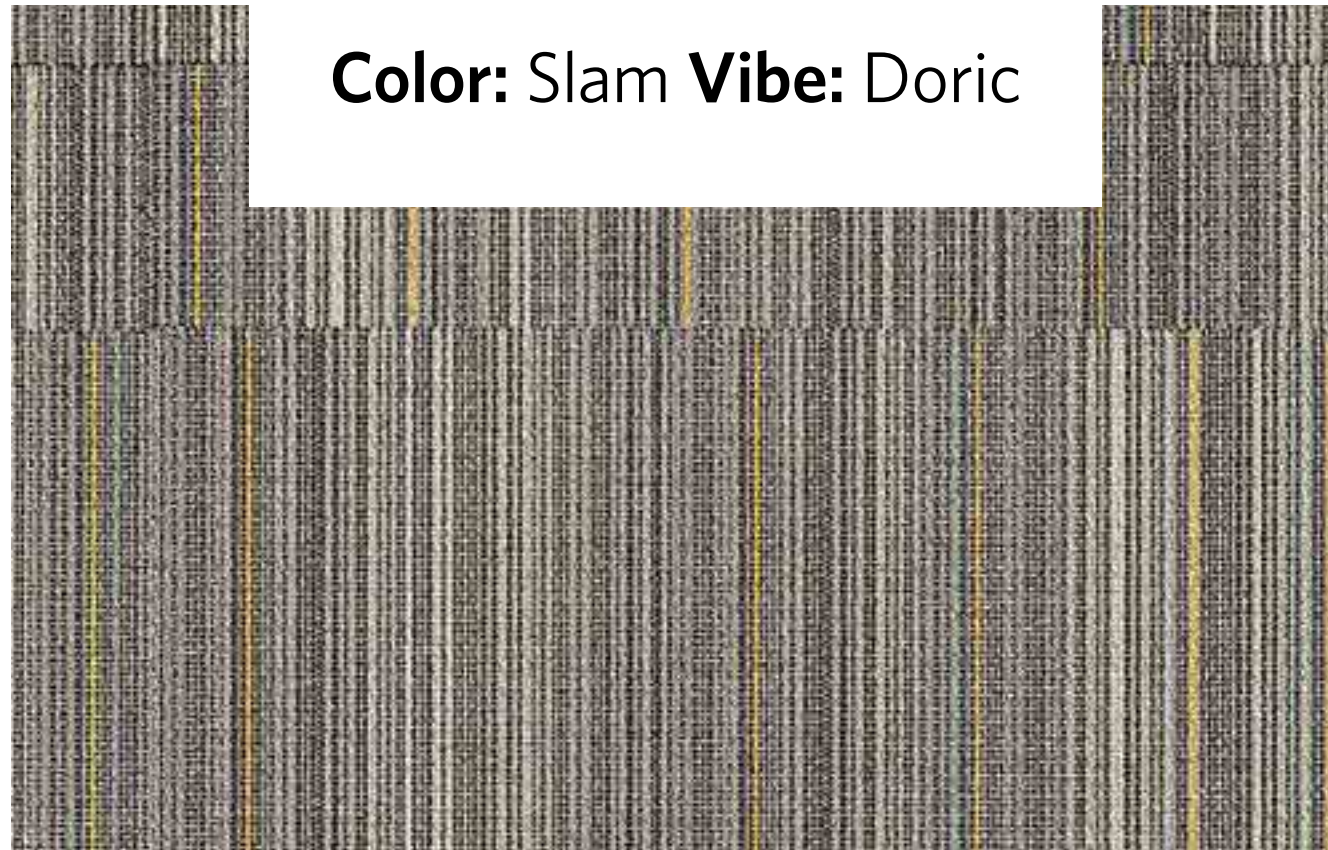
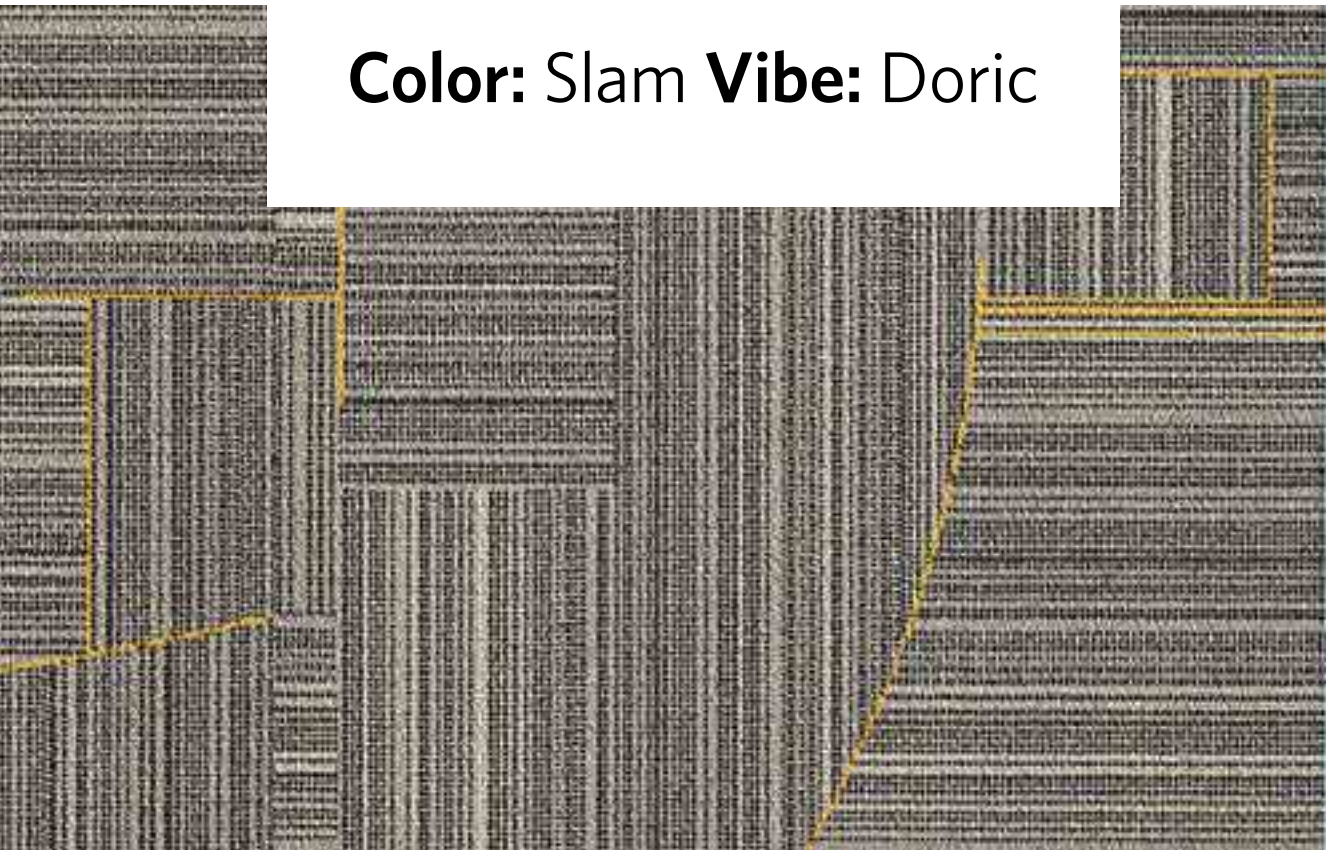
MIX TAPE

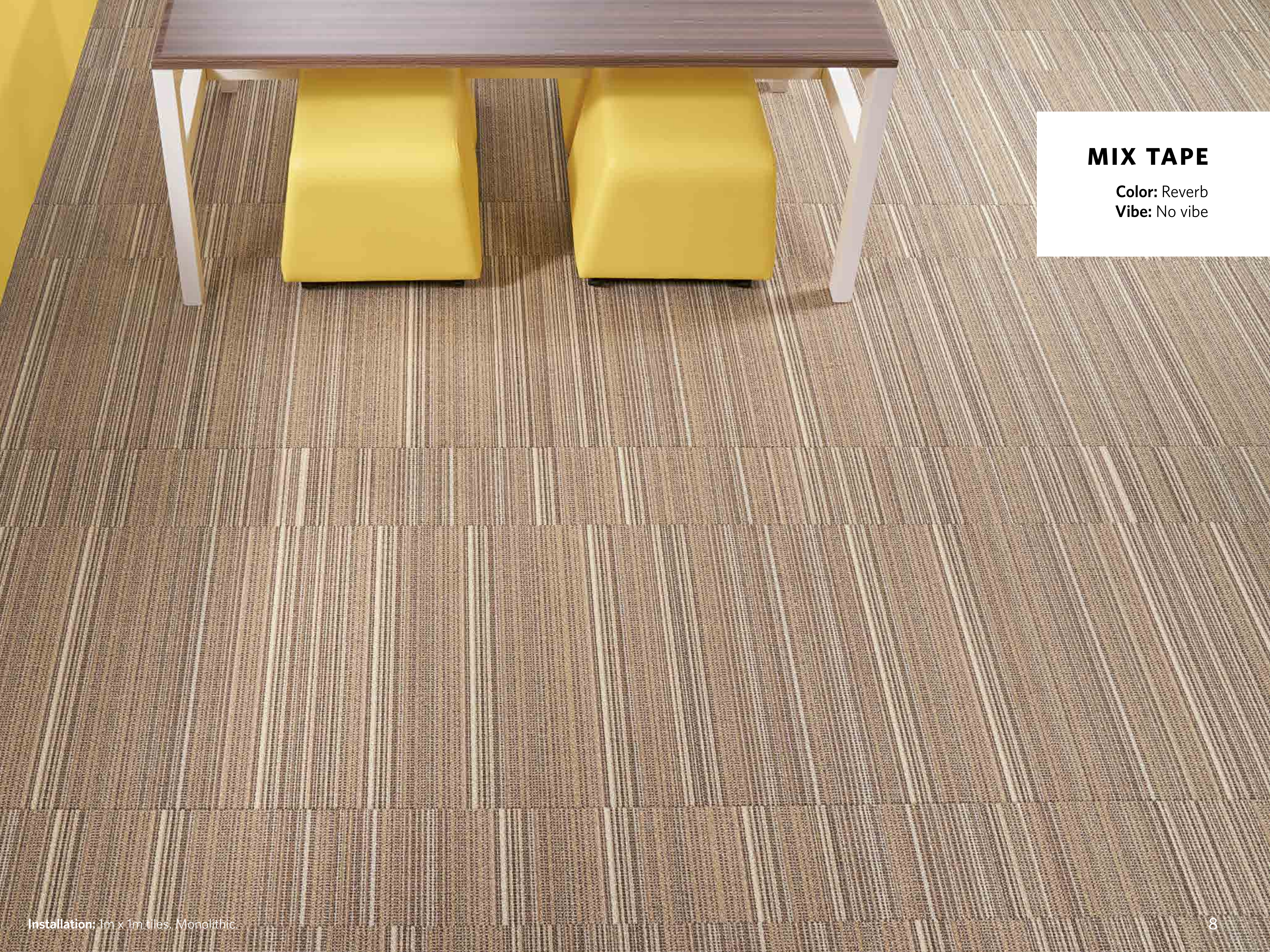
Color: Slam Vibe: Doric



BASS LINE

Color: Slam Vibe: Doric





MIX TAPE

Color: Reverb
Vibe: No vibe



Installation: 1m x 1m tiles. Monolithic.

Patterns: Freestyle (left), Backbeat (right)
Color: Cue Up. **Vibe:** No vibe



MIX TAPE

Color: Apple
Vibe: No vibe

Installation: 50cm x 50cm tiles. Monolithic. LVT Old City in Fairmount.

BASS LINE

Color: Headroom
Vibe: Ocean Depth



Formwork in Ocean Depth. 50cm x 50cm tiles.

Installation: 50cm x 50cm tiles. Monolithic.

BASS LINE

Color: Headroom

Vibe: Ocean Depth

Formwork in Ocean Depth. 50cm x 50cm tiles.

Installation: 50cm x 50cm tiles. Monolithic.

BASS LINE

Color: Headroom

Vibe: Ocean Depth

Formwork in Ocean Depth. 50cm x 50cm tiles.

Installation: 50cm x 50cm tiles. Monolithic.

BACKBEAT

Color: Slam

Vibe: Doric

Installation: 50cm x 50cm tiles. Monolithic.

BASS LINE

Color: Headroom

Vibe: Eaves

GET INSPIRED

Opening a box of **REMIX REMASTERED** tiles invites inspiration. With a fresh palette of 24 colors and 12 vibe options, designing a floor that feels completely custom is easier than ever.

Visit the [MillikenFloors.com/Visualizer](https://www.millikenfloors.com/visualizer)

BASS LINE

Color: Vinyl

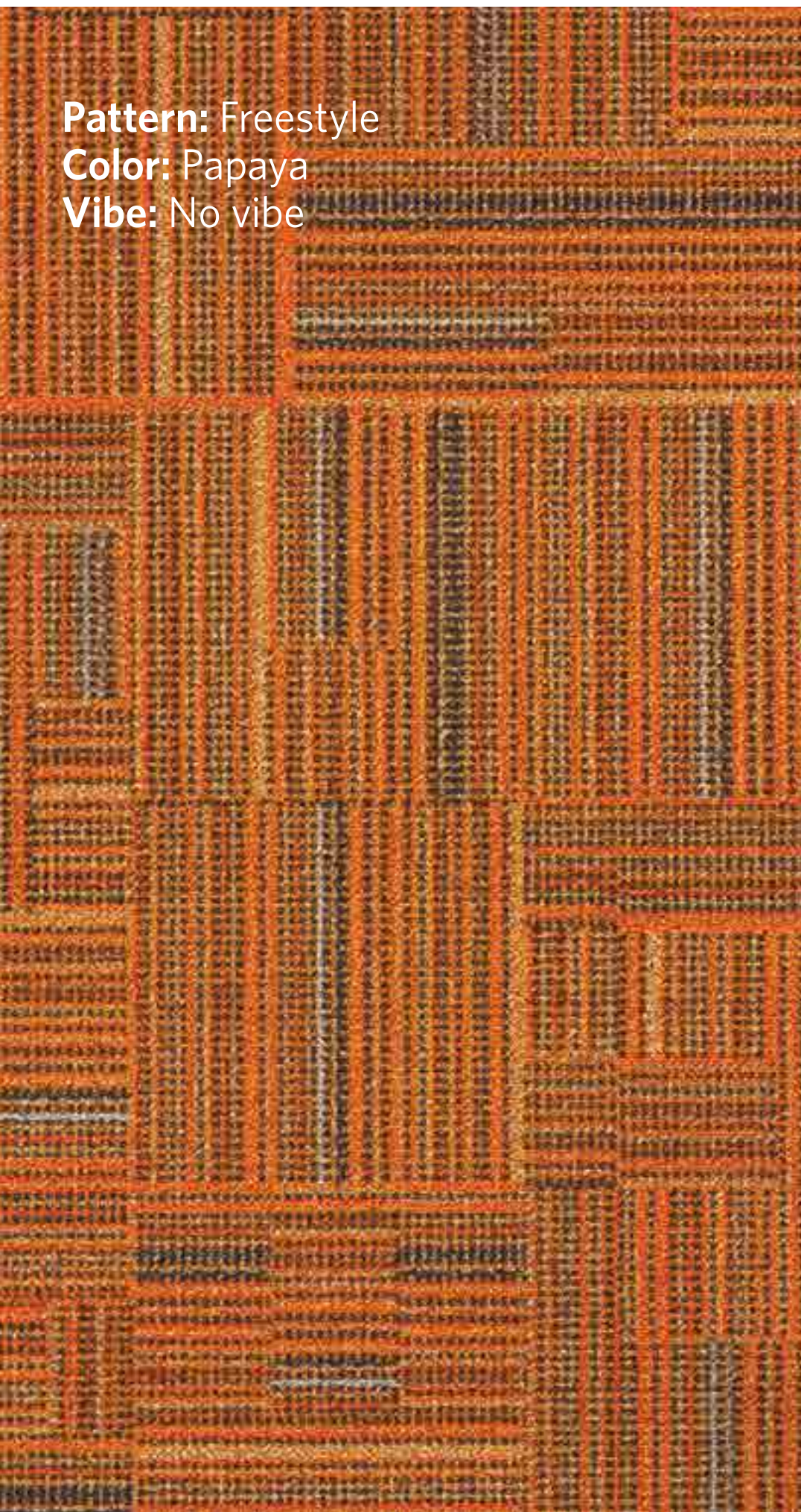
Vibe: Azul (left), no vibe (right)



Pattern: Freestyle
Color: Reverb
Vibe: Papaya



Pattern: Freestyle
Color: Papaya
Vibe: No vibe



Installation: 1m x 1m tiles. Monolithic.





BASS LINE

Color: Slam

Vibe: Doric



MIX TAPE

Color: Apple

Vibe: No vibe

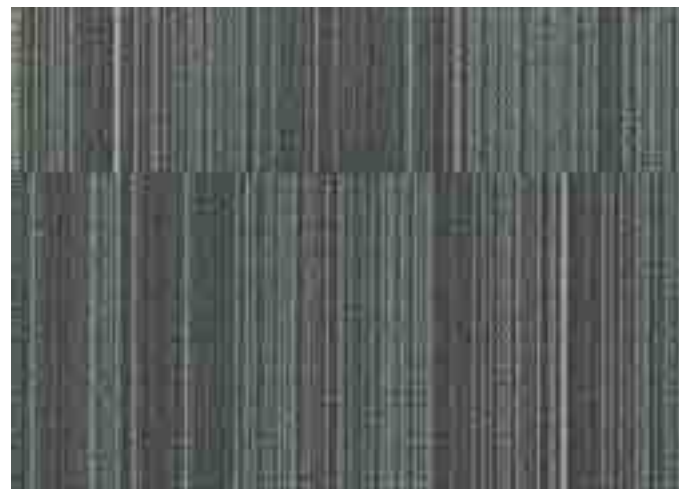
BACKBEAT

Color: Vinyl

Vibe: Azul

Installation: 1m x 1m tiles. Monolithic.

MIX TAPE



MIX TAPE MXT25
HEADROOM, NO VIBE



MIX TAPE MXT83
SLAM, NO VIBE



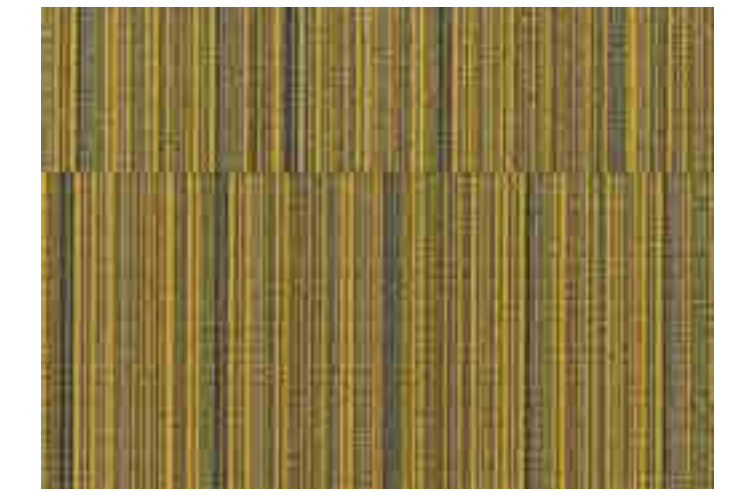
MIX TAPE MXT108
BONUS TRACK, NO VIBE



MIX TAPE MXT126
FRENCH BLUE, NO VIBE



MIX TAPE MXT140
AZUL, NO VIBE



MIX TAPE MXT231
DORIC, NO VIBE



MIX TAPE MXT107
OVERDUB, NO VIBE



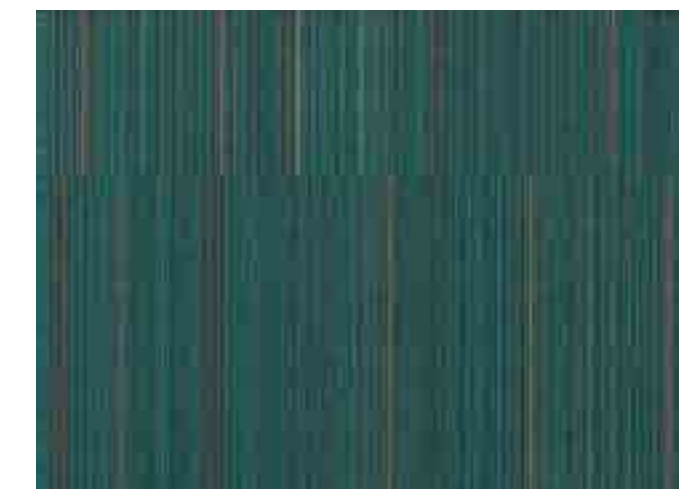
MIX TAPE MXT67
SNARE, NO VIBE



MIX TAPE MXT120
CUE UP, NO VIBE



MIX TAPE MXT183
SAPPHIRE, NO VIBE



MIX TAPE MXT201
AQUAMARINE, NO VIBE



MIX TAPE MXT141
APPLE, NO VIBE



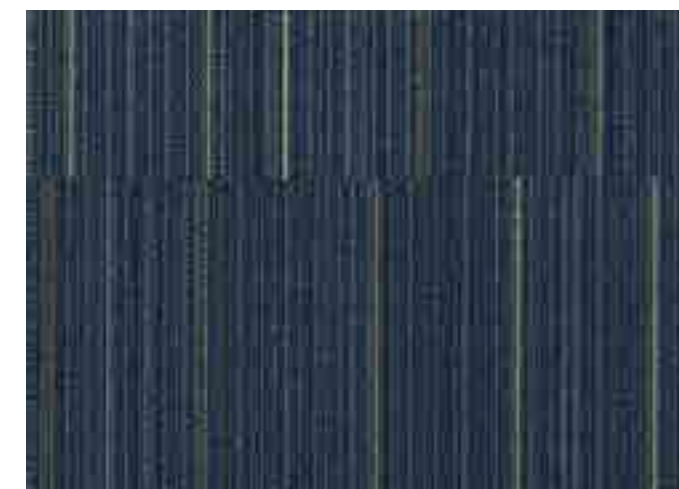
MIX TAPE MXT52
ROLLOFF, NO VIBE



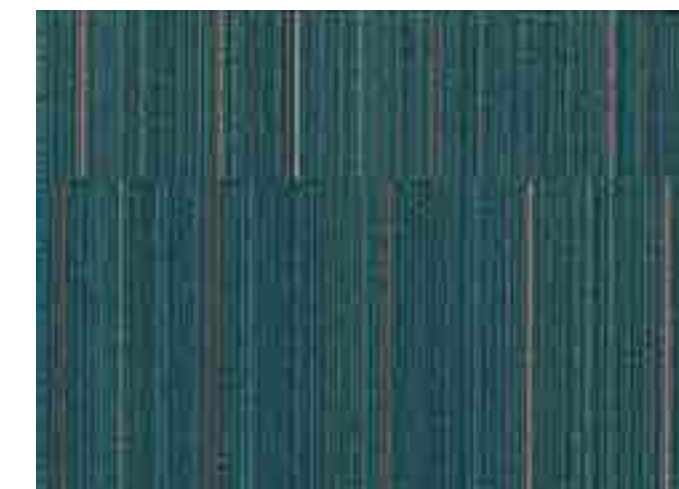
MIX TAPE MXT27
VINYL, NO VIBE



MIX TAPE MXT151-114
DUB, NO VIBE



MIX TAPE MXT123
DENIM, NO VIBE



MIX TAPE MXT229
OCEAN DEPTH, NO VIBE



MIX TAPE MXT203
JUNGLE, NO VIBE



MIX TAPE MXT42
REVERB, NO VIBE



MIX TAPE MXT93
HUM, NO VIBE



MIX TAPE MXT77
A SIDE, NO VIBE



MIX TAPE MXT252
PAPAYA, NO VIBE

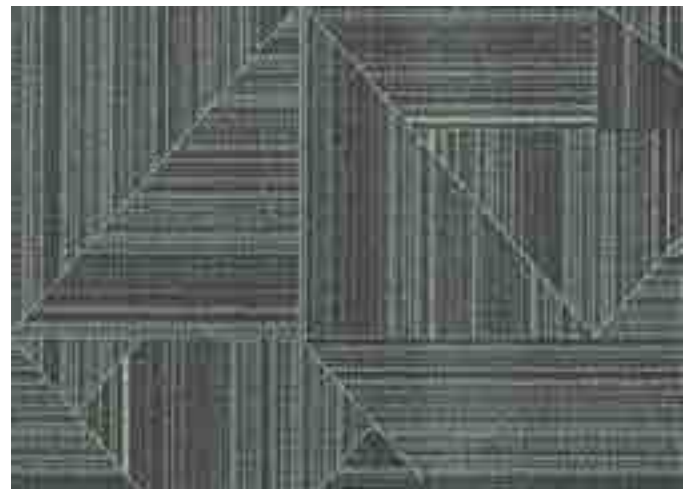


MIX TAPE MXT109
SCARLET, NO VIBE

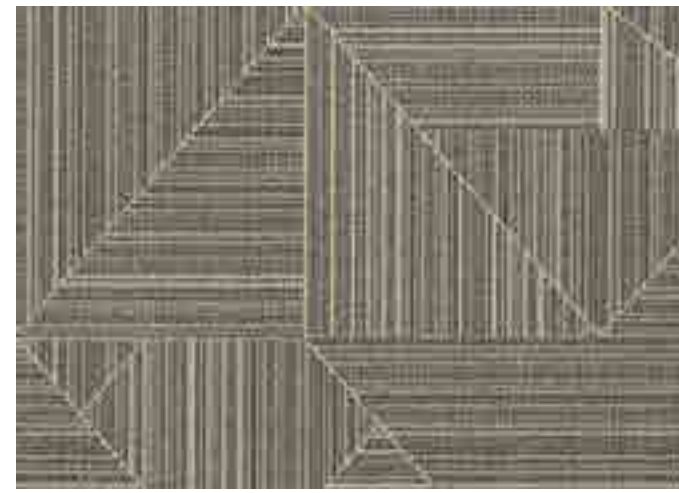


MIX TAPE MXT66
EAVES, NO VIBE

BASS LINE



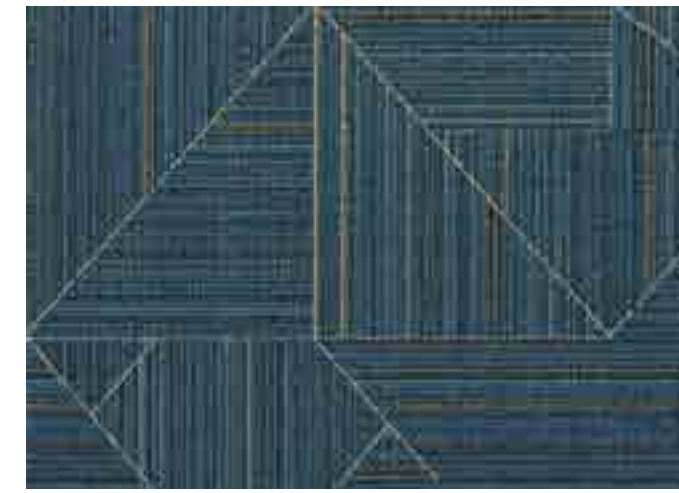
BASS LINE BSL25
HEADROOM, NO VIBE



BASS LINE BSL83
SLAM, NO VIBE



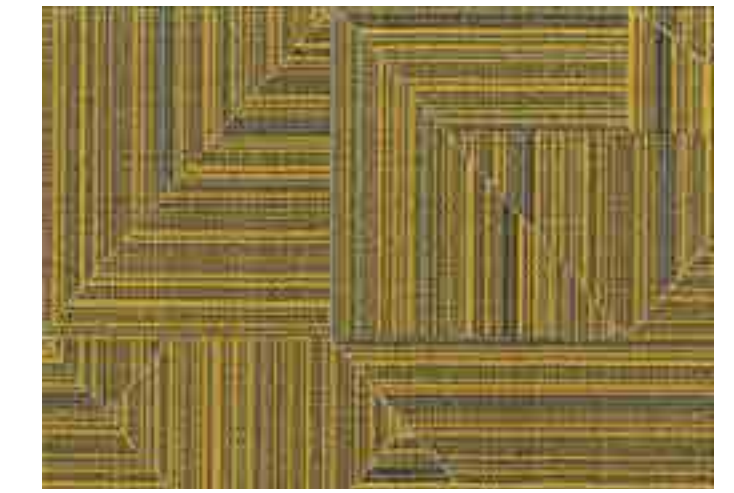
BASS LINE BSL108
BONUS TRACK, NO VIBE



BASS LINE BSL126
FRENCH BLUE, NO VIBE



BASS LINE BSL140
AZUL, NO VIBE



BASS LINE BSL231
DORIC, NO VIBE



BASS LINE BSL107
OVERDUB, NO VIBE



BASS LINE BSL67
SNARE, NO VIBE



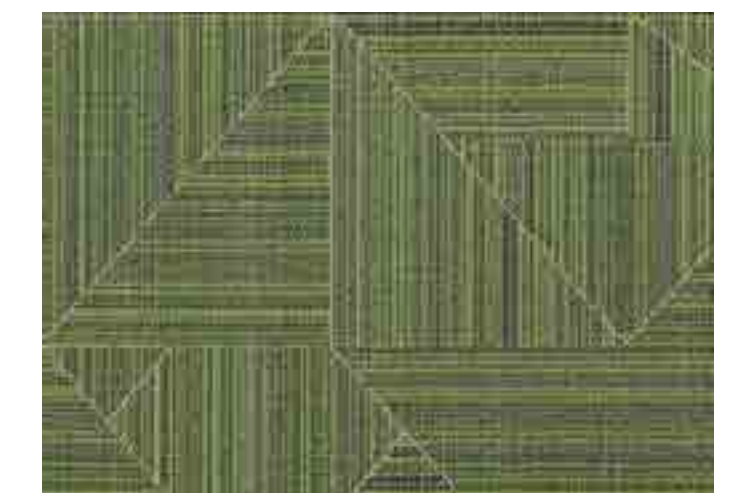
BASS LINE BSL120
CUE UP, NO VIBE



BASS LINE BSL183
SAPPHIRE, NO VIBE



BASS LINE BSL201
AQUAMARINE, NO VIBE



BASS LINE BSL141
APPLE, NO VIBE



BASS LINE BSL52
ROLLOFF, NO VIBE



BASS LINE BSL27
VINYL, NO VIBE



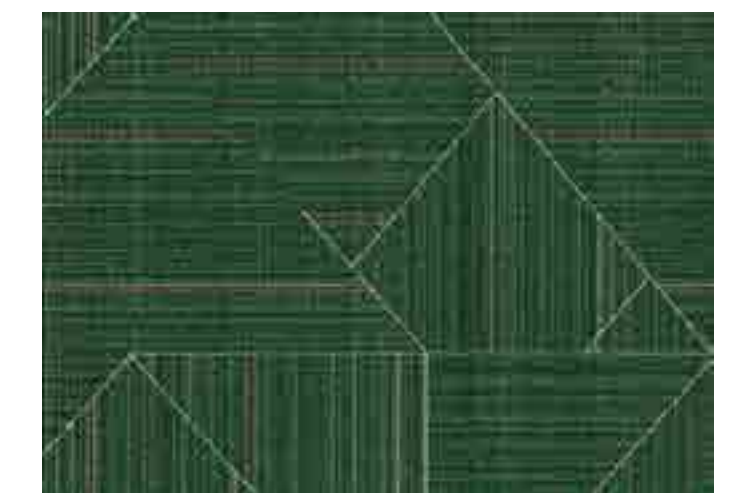
BASS LINE BSL151-114
DUB, NO VIBE



BASS LINE BSL123
DENIM, NO VIBE



BASS LINE BSL229
OCEAN DEPTH, NO VIBE



BASS LINE BSL203
JUNGLE, NO VIBE



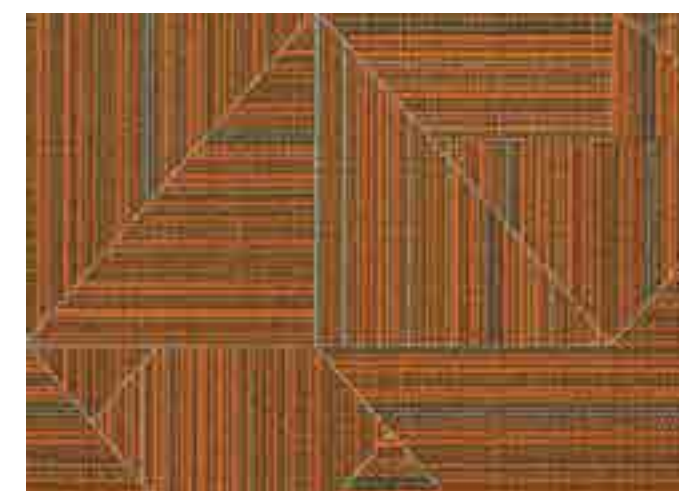
BASS LINE BSL42
REVERB, NO VIBE



BASS LINE BSL93
HUM, NO VIBE



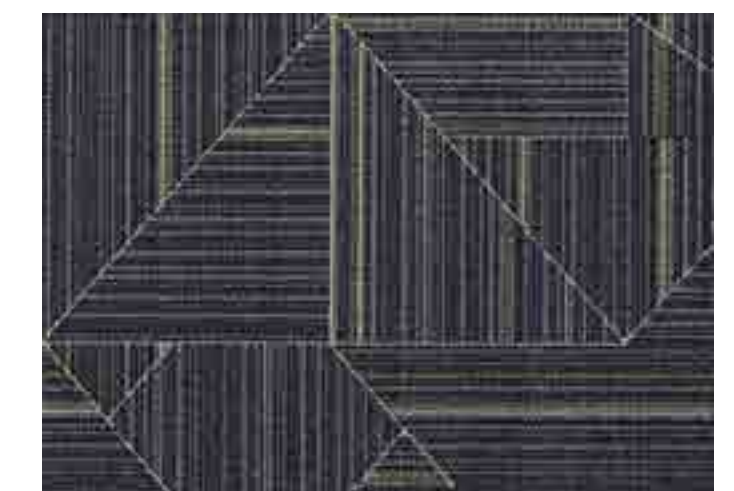
BASS LINE BSL77
A SIDE, NO VIBE



BASS LINE BSL252
PAPAYA, NO VIBE

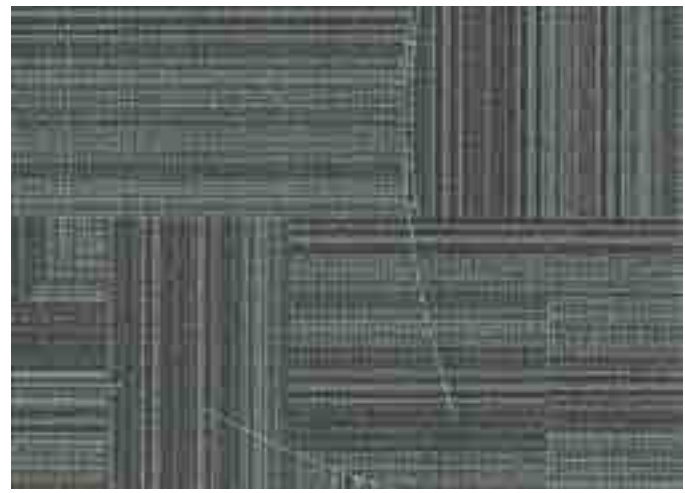


BASS LINE BSL109
SCARLET, NO VIBE

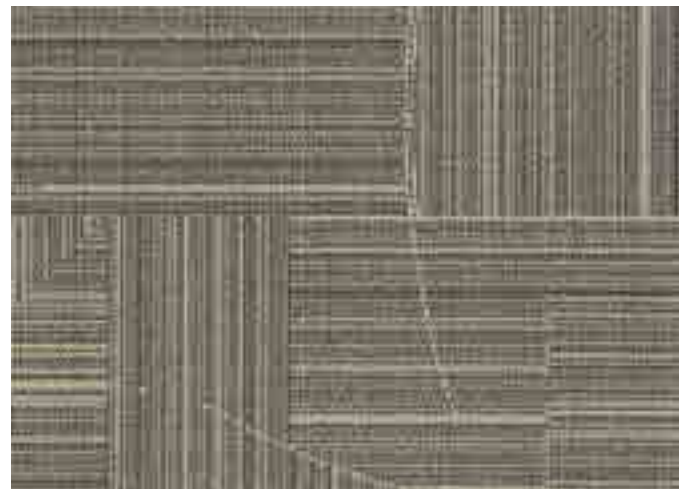


BASS LINE BSL66
EAVES, NO VIBE

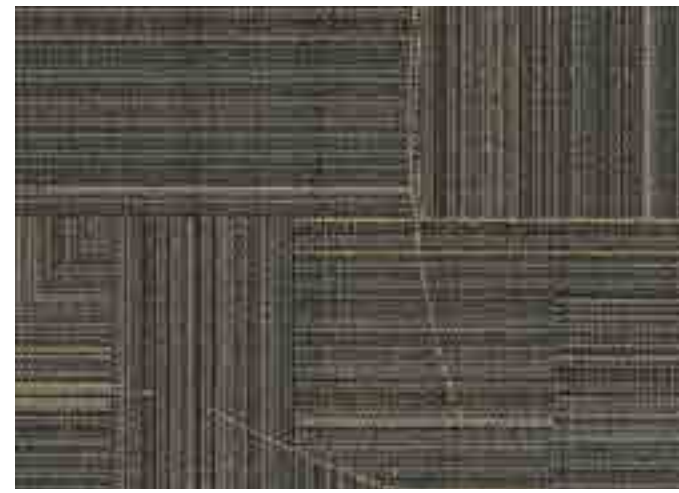
BACKBEAT



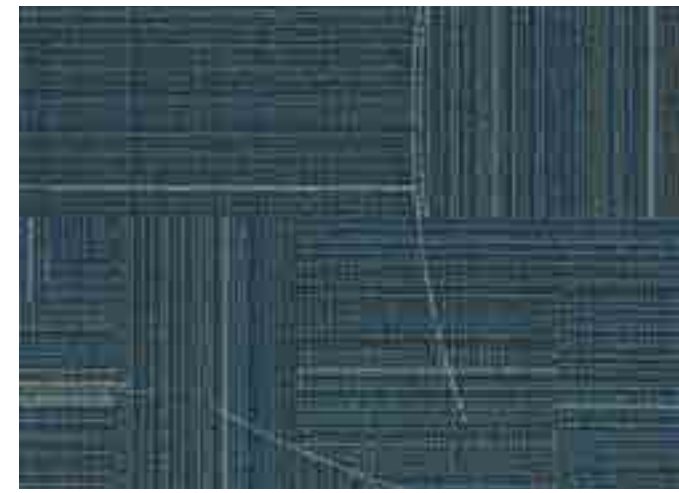
BACKBEAT BKB25
HEADROOM, NO VIBE



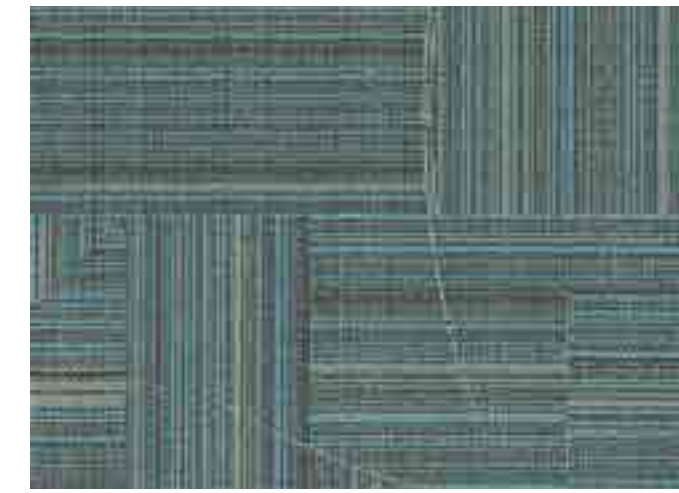
BACKBEAT BKB83
SLAM, NO VIBE



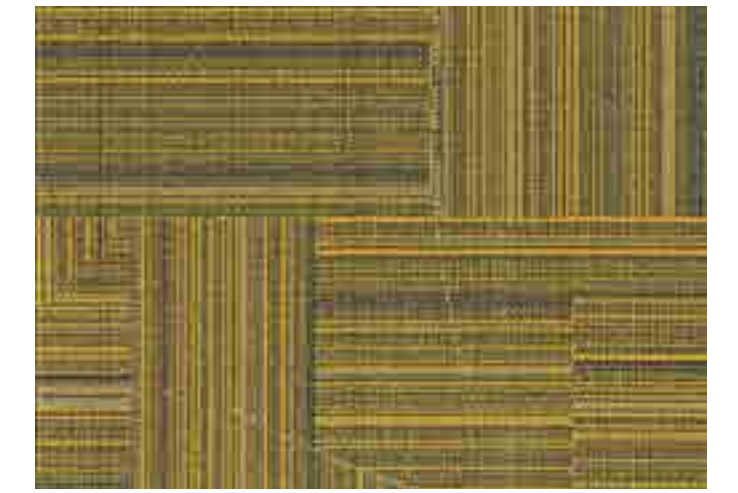
BACKBEAT BKB108
BONUS TRACK, NO VIBE



BACKBEAT BKB126
FRENCH BLUE, NO VIBE



BACKBEAT BKB140
AZUL, NO VIBE



BACKBEAT BKB231
DORIC, NO VIBE



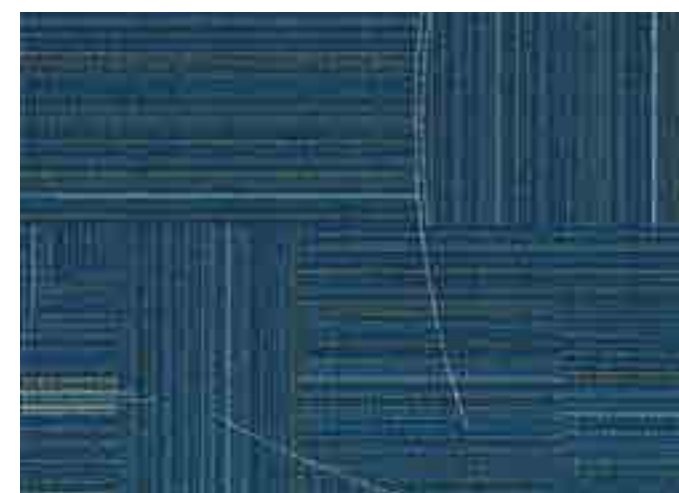
BACKBEAT BKB107
OVERDUB, NO VIBE



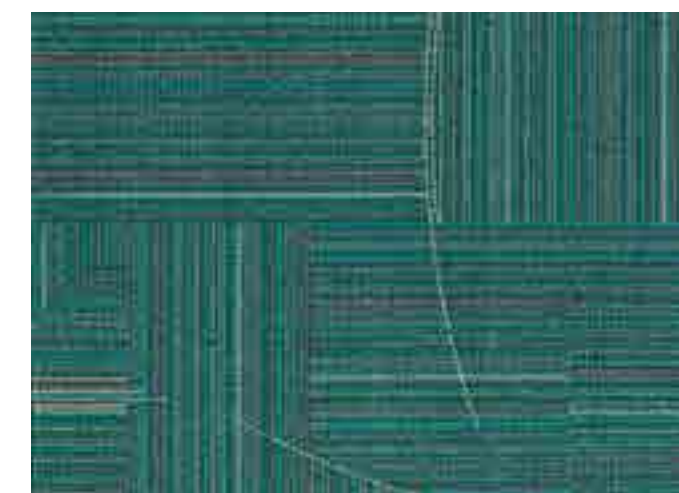
BACKBEAT BKB67
SNARE, NO VIBE



BACKBEAT BKB120
CUE UP, NO VIBE



BACKBEAT BKB183
SAPPHIRE, NO VIBE



BACKBEAT BKB201
AQUAMARINE, NO VIBE



BACKBEAT BKB141
APPLE, NO VIBE



BACKBEAT BKB52
ROLLOFF, NO VIBE



BACKBEAT BKB27
VINYL, NO VIBE



BACKBEAT BKB151-114
DUB, NO VIBE



BACKBEAT BKB123
DENIM, NO VIBE



BACKBEAT BKB229
OCEAN DEPTH, NO VIBE



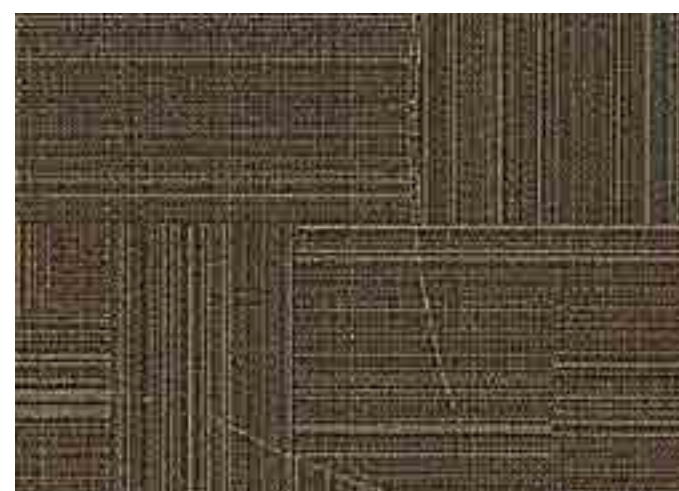
BACKBEAT BKB203
JUNGLE, NO VIBE



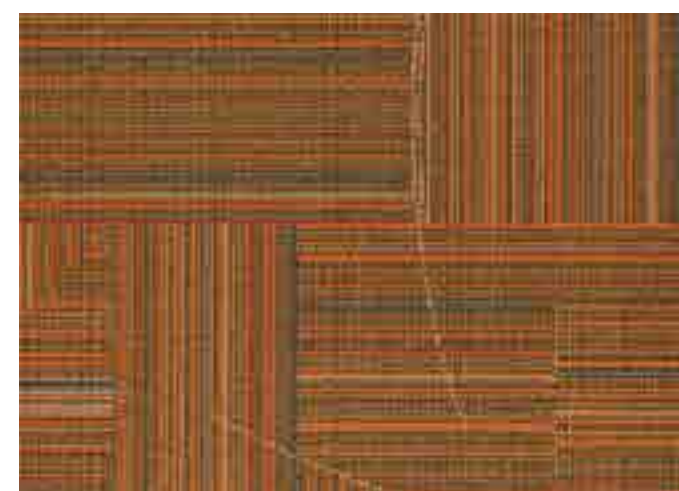
BACKBEAT BKB42
REVERB, NO VIBE



BACKBEAT BKB93
HUM, NO VIBE



BACKBEAT BKB77
A SIDE, NO VIBE



BACKBEAT BKB252
PAPAYA, NO VIBE



BACKBEAT BKB109
SCARLET, NO VIBE

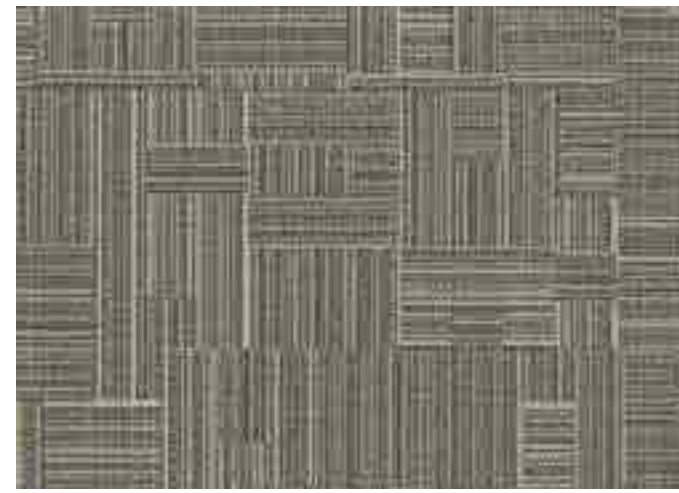


BACKBEAT BKB66
EAVES, NO VIBE

FREESTYLE



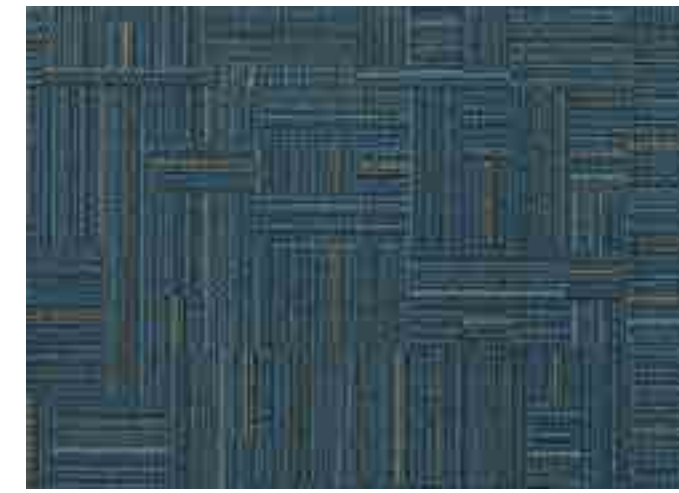
FREESTYLE FRS25
HEADROOM, NO VIBE



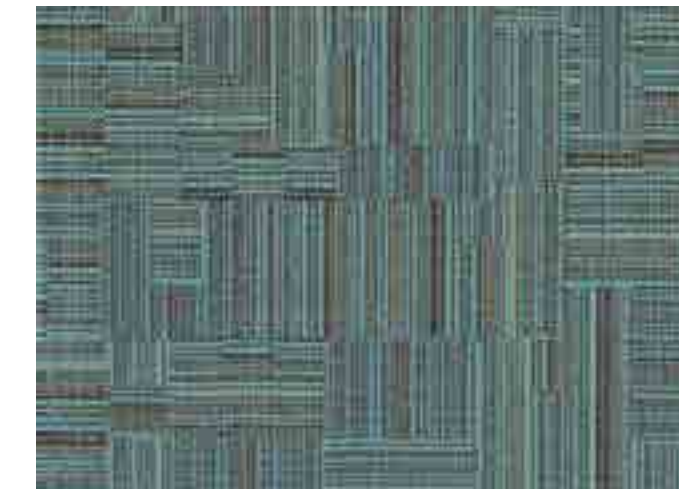
FREESTYLE FRS83
SLAM, NO VIBE



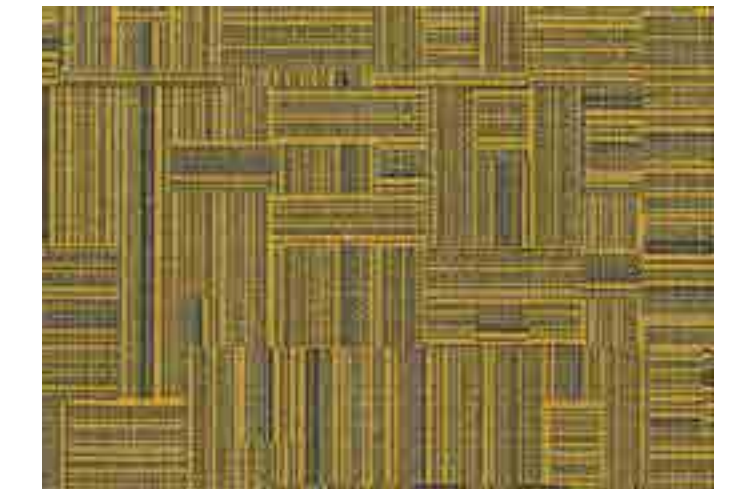
FREESTYLE FRS108
BONUS TRACK, NO VIBE



FREESTYLE FRS126
FRENCH BLUE, NO VIBE



FREESTYLE FRS140
AZUL, NO VIBE



FREESTYLE FRS231
DORIC, NO VIBE



FREESTYLE FRS107
OVERDUB, NO VIBE



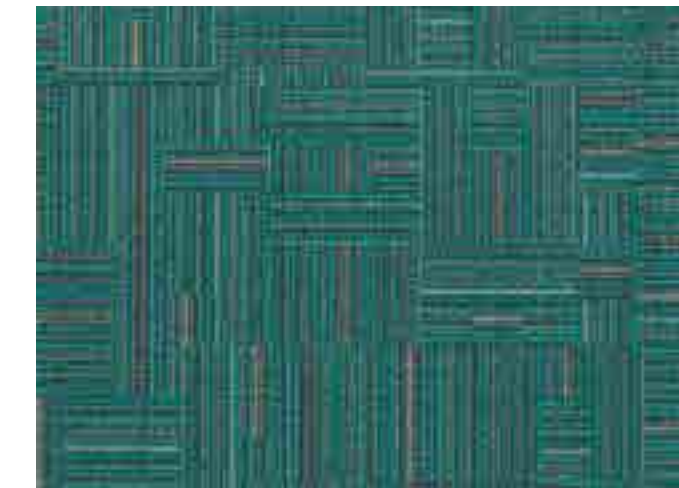
FREESTYLE FRS67
SNARE, NO VIBE



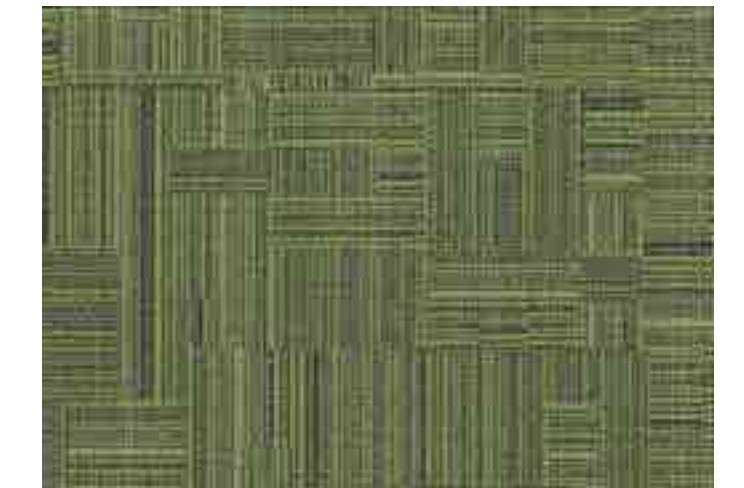
FREESTYLE FRS120
CUE UP, NO VIBE



FREESTYLE FRS183
SAPPHIRE, NO VIBE



FREESTYLE FRS201
AQUAMARINE, NO VIBE



FREESTYLE FRS141
APPLE, NO VIBE



FREESTYLE FRS52
ROLLOFF, NO VIBE



FREESTYLE FRS27
VINYL, NO VIBE



FREESTYLE FRS151-114
DUB, NO VIBE



FREESTYLE FRS123
DENIM, NO VIBE



FREESTYLE FRS229
OCEAN DEPTH, NO VIBE



FREESTYLE FRS203
JUNGLE, NO VIBE



FREESTYLE FRS42
REVERB, NO VIBE



FREESTYLE FRS93
HUM, NO VIBE



FREESTYLE FRS77
A SIDE, NO VIBE



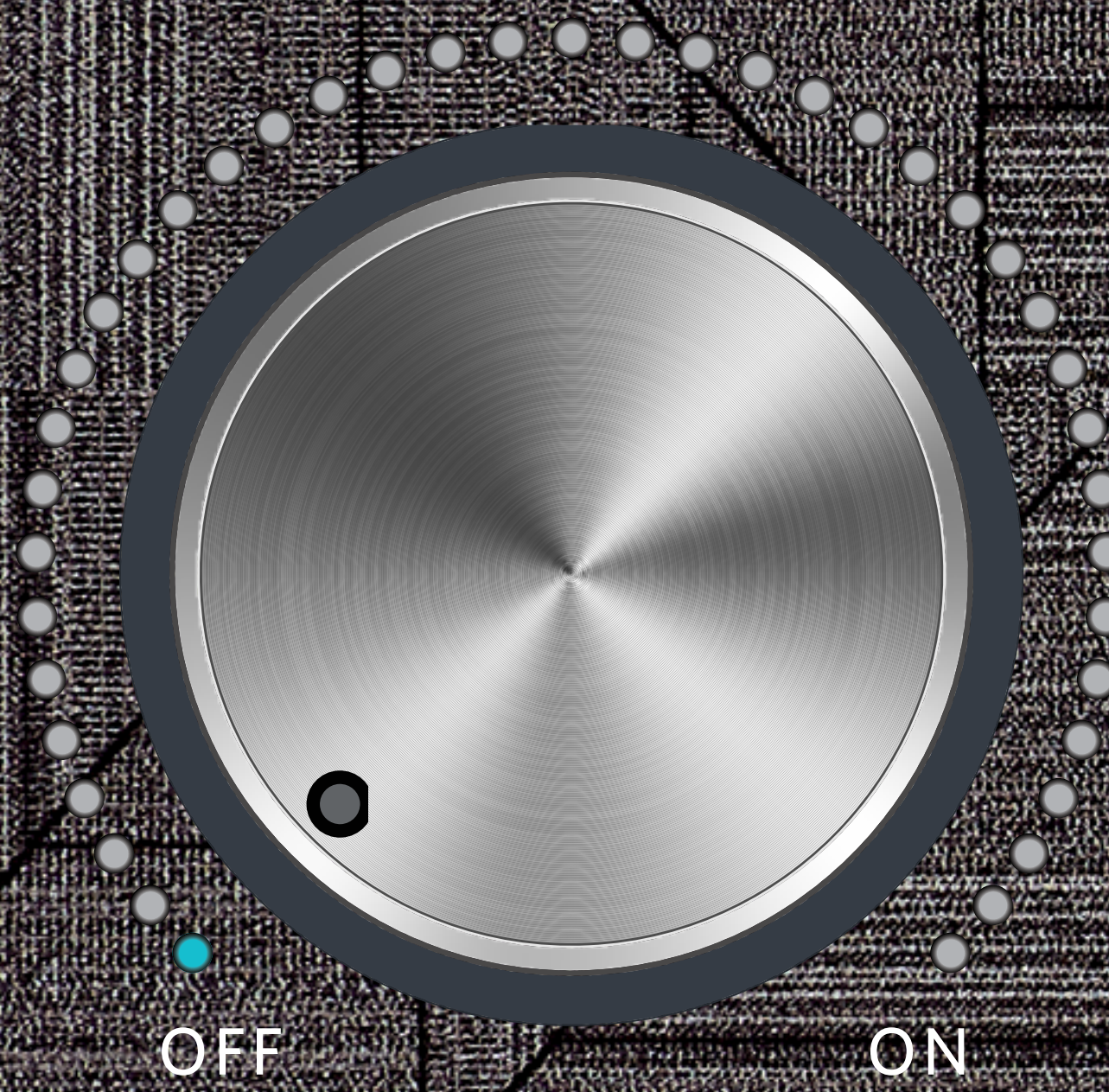
FREESTYLE FRS252
PAPAYA, NO VIBE



FREESTYLE FRS109
SCARLET, NO VIBE



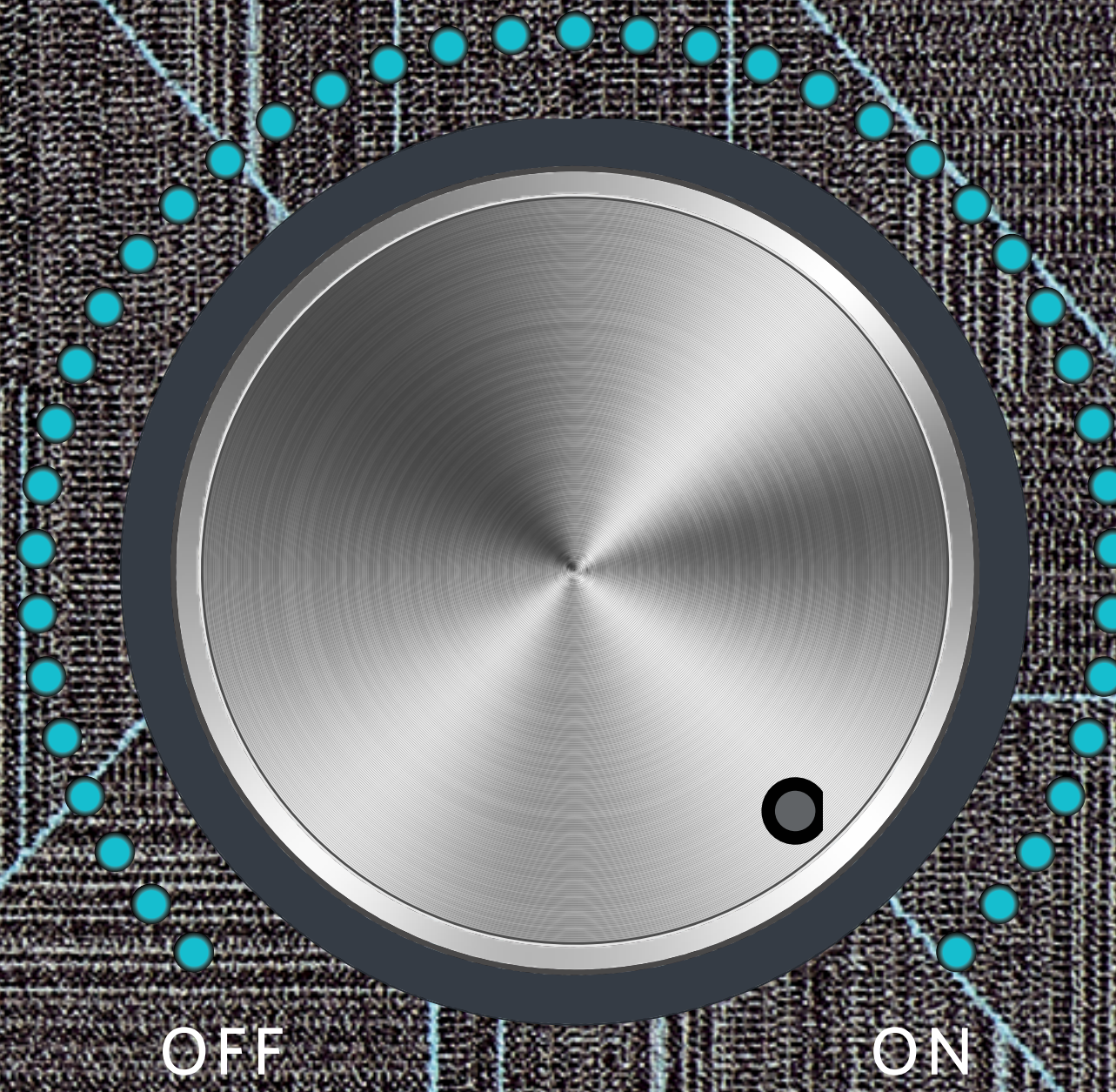
FREESTYLE FRS66
EAVES, NO VIBE



OFF

ON

VIBE



OFF

VIBE

ON



DENIM 123



FRENCH BLUE 126



AQUAMARINE 201



JUNGLE 203



DORIC 231



SCARLET 109



SAPPHIRE 183



AZUL 140



OCEAN DEPTH 229



APPLE 141



PAPAYA 252



EAVES 66



Style Backed by Performance

Milliken Floor Covering offers products and expertise in all areas of your commercial spaces, including high-performance entryway systems, modular and broadloom carpet, luxury vinyl tile and milliCare®. Simplify your flooring projects by working with a trusted partner that lets you focus on enjoying the process of creating a great space.

Milliken™



WARRANTY

Our products are backed by lifetime commercial warranties that ensure quality and give peace of mind. Milliken stands behind its products in the areas of Face Fiber Wear, Staining/Soiling Resistance, Color Pattern Permanency, Delamination of Backing, Edge Ravel, Tuft Bind, Floor Compatibility, Antistatic, Flammability, Cushion Resiliency, Dimensional Stability, Floor Release, TractionBack and Moisture Resistance.

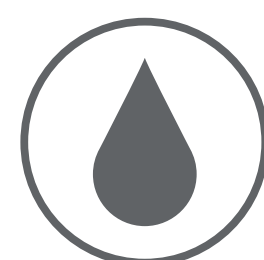
» millikenfloors.com/warranty



SUSTAINABILITY

Core to our culture, we embrace sustainability with practices such as third party voluntary product labeling and certifications, zero waste to landfill since 1992, use of renewable energy, product lifecycle assessments, ISO 9000 quality standards and all of our manufacturing sites are certified to the highest global environmental standard - ISO 14001.

» millikenfloors.com/sustainability

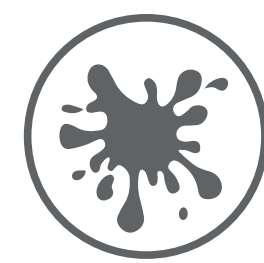


MOISTURE MANAGEMENT

Milliken modular carpet is a moisture mitigation solution all by itself. Unlike with hardback products, water vapor has a way to escape from beneath Milliken's cushion backing. It travels freely through our open-cell cushion, evaporating naturally through seams at the edges of each carpet tile.

All modular carpet tiles come with a lifetime warranty against adhesive breakdown due to moisture vapor emissions.

» millikenfloors.com/moisture



STAINSMART®

StainSmart, a proprietary treatment applied to Milliken carpets designed to repel and protect against stains and enhance soil release.

» millikenfloors.com/stainSMART



SIT TO STAND

Avoid the hassle and expense of using anti-fatigue mats under sit-to-stand workstations. Milliken cushion-backed carpet tiles have ergonomics built directly into the carpet tiles themselves.

» millikenfloors.com/sit2stand



TRACTIONBACK®

Our bio-based, high-friction coating keeps carpet tiles securely in place without additional adhesives, eliminating the need to prime or seal the floor and reducing installation time and costs.

» millikenfloors.com/tractionback



CUSHION BACKING

Provides superior underfoot comfort while improving the carpet's durability and offering ergonomic, acoustic and environmental benefits.

» millikenfloors.com/cushion





Growing greener for over 100 years.

This product has a UL® Environment 3rd party verified Environmental Product Declaration (EPD). A copy of the EPD is available online at millikencarpet.com/epd and productguide.ulenvironment.com.

This cushion-back carpet tile product is covered by one or more patents, published applications and/or patents pending. Specifications are subject to normal manufacturing tolerances and may be changed without prior notice. Images in this brochure are approximate for color and pattern scale. Please use actual carpet samples to make your final selections.