

# Specifications

## Channel

### 650159

**maharam**

#### Application

Floors

#### Characteristics

Content: 100% Wool

Construction: Handwoven

Backing: None

Maximum Width: 18' (549cm)

Maximum Length: 20' (610cm)

Size variation: +/- 5%

Height: 1/4" (6mm)

Weight: 5.9 oz/sq ft (1800 g/sq m)

Traffic: High-Suitable for most heavy duty applications. Not appropriate for stairway or corridor applications or for use with casters.

Country of Origin: India

Note: Variations in color and texture are inherent to this textile.

#### Price

Contact your sales representative for pricing.

#### Maintenance

X-Vacuum or brush lightly to remove surface dust.

☒ ☒ ☒ ☒ ☒

#### Testing

Flammability: ASTM D2859 / CPSC FF 1-70 /FF 2-70, 16 CFR 1630

ASTM E648 / NFPA 253 OVER RUG PAD THIN

ASTM E648/NFPA 253

Lightfastness: AATCC 16.3, 40+ hours

Specifications  
Channel  
650159

**maharam**

**Environmental**

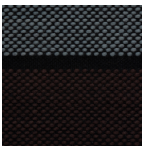
LBC Red List Free  
REACH Compliant  
Contains Bio-Based Content  
FR Free  
Free of Intentionally Added PFAS

**Warranty**

2 years.

© 2023 Maharam

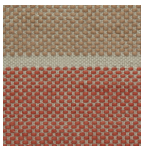
Complete product information at [maharam.com](https://maharam.com)  
800.645.3943



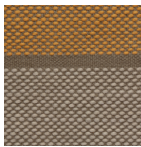
001 Range



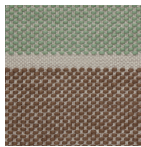
002 Currant



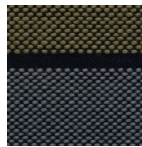
003 Sandstone



004 Solar



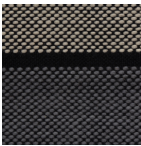
005 Pistachio



006 Anagama



007 Lure



008 Summit