

# Specifications

## Instant Photo

### 300060

**maharam**

#### Application

Walls

#### Characteristics

Content: 65% Cellulose, 35% Latex

Finish: PFAS-Free Protective Topcoat

Backing: None

Reference Dimension: 10' x 16' 8" (305cm x 508cm)

Customs: Repeatable, Scalable

Country of Origin: USA

Note on Mold: Intended for use in buildings designed and maintained to avoid moisture on or within walls.

Application must conform to current Installation Guidelines included in each shipment or available at [maharam.com](http://maharam.com).

#### Price

Contact your sales representative for pricing.

#### Maintenance

W-Clean with water-based cleanser.

☒ ☒ ☒ ☒ ☒

#### Testing

Flammability: CAN ULC S102 Adhered

☼ ☼ ☼

# Specifications

## Instant Photo

### 300060

**maharam**

#### **Environmental**

Greenguard Gold Certified

LBC Red List Free

Contains Bio-Based Content

FR Free

Free of Intentionally Added PFAS

#### **Brief**

Depicting over 600 images from Paul Smith's personal collection of photographs, Instant Photo features an array of objects, environments, and surfaces that speaks to Smith's passion for collecting while commenting on the relevance of instant photography in today's hyper-documented world.

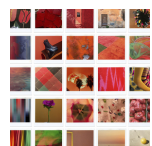
#### **Warranty**

3 years.

© 2019 Paul Smith, Maharam under license

Complete product information at [maharam.com](https://maharam.com)

800.645.3943



001