

## Specifications

### Edges

by Alexander Girard®, 1961

466476

**maharam**

#### Application

Seating

Note: This textile is available as a made-to-order pillow.

#### Characteristics

Content: 66% Cotton, 30% Solution-Dyed Nylon, 4% Polyester

Finish: Stain Repellent

Additional Finishes Available: Alta, Alta Food and Beverage, Nanotex

Backing: Acrylic

Width: 53" (135cm)

Repeat: 8" V, 7" H (20cm V, 18cm H)

Bolt Size: 60 yards (55 m)

Weight: 14.4 oz/ly (446 gr/lm)

Country of Origin: USA

#### Price

Contact your sales representative for pricing.

#### Maintenance

S-Clean with mild, water-free dry cleaning solvent.

☒ ☒ ☒ ☒ ☐

#### Testing

Abrasion: ASTM D4157, 100,000 double rubs Wyzenbeek

Note: Abrasion test results exceeding ACT Performance Guidelines are not an indicator of product lifespan.

Multiple factors affect fabric durability and appearance retention.

Flammability: BS 5852 Crib 5\*

CAL 117-2013

EN 1021-1\*

EN 1021-2\*

\*passes with additional treatment

Lightfastness: AATCC 16.3, 40+ hours

☐ ☀ ☹ ☹ ☹

Specifications

Edges

by Alexander Girard®, 1961

466476

**maharam**

**Environmental**

Greenguard Gold Certified  
REACH Compliant  
Contains Bio-Based Content  
FR Free

**Warranty**

3 years.

© 2018 Girard Studio, LLC, Maharam under license

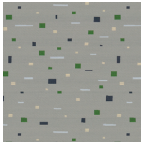
Complete product information at [maharam.com](http://maharam.com)  
800.645.3943



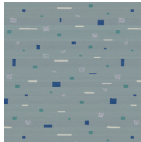
001 Magenta On Ecru



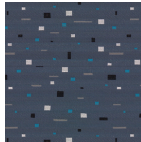
002 Yellow On White



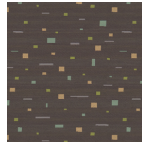
003 Emerald On Gray



004 Ultramarine On Gray



005 Turquoise On Gray



006 Yellow Green On Sepia



007 Crimson On Black



008 Silver On Magenta