

fabric card
color selections



wright · line

TECHNICAL INFORMATION

Style #	Name	Weight	Approx. Repeat
2100	FR701®	16.0 ± 0.5 oz./lin. yd.	None
* 2823	Hopscotch	11.1 ± 1.0 oz./lin. yd.	None
* 3583	Zirconia	12.4 ± 1.0 oz./lin. yd.	16" vert, 16.5" horiz.
* 2335	Anchorage	15.0 ± 1.0 oz./lin. yd.	None
* 2721	Streetwise	13.0 ± 1.0 oz./lin. yd.	None
* 2527	Mingle	10.9 ± 1.0 oz./lin. yd.	16.7" vert. / 16.2" horiz.
* 4158	Network	11.0 ± 1.0 oz./lin. yd.	11.875" vert. / 8.25" horiz.

Common Features

- 100% recycled polyester
- ASTM E-84 Class 1 or A flammability rating (FR701® is also NFPA certified)
- Colorfastness to light: 40 hours
- Colorfastness to crocking: Class 4 min. dry / Class 3 min. wet
- Colors may vary slightly between dye lots
- Clean with mild, water-free solvents or water-based cleaning agents or foam

Wright Line LLC

World Headquarters

160 Gold Star Boulevard

Worcester, MA 01606

Tel: 800-225-7348

508-852-4300

Fax: 508-365-6178

www.wrightline.com

info@wrightline.com

Wright Line Limited

Regus House

400 Thames Valley Park Drive

Reading

Berkshire, RG6 1PT England

Tel: 44-1189-637-935

Fax: 44-1189-637-934

Wright Line Japan Company, Ltd.

Seveness Building 2F

12-13 Nibancho, Chiyoda-ku

Tokyo 102-0084

Tel: 81-3-3221-8451

Fax: 81-3-3221-8455



Guilford and Guilford of Maine are registered trademarks of Interface Fabrics, Inc. and Interface Company.



Terratex® is a registered trademark of Interface Fabrics, Inc., an Interface Company and designates fabrics that are made from 100% recycled or compostable material using increasingly sustainable manufacturing practices to produce a high quality product that is recyclable at the end of its useful life.



*100% of the electricity used to make this product is matched by Green-e certified renewable energy certificates.



These fabrics are included in the underwriters laboratory panel fabric recognition program. Additional testing of the U.L. recognized component fabric is not required on approved panels from participating manufacturers.

For additional international representation, please contact us at: 800-225-7348 or email info@wrightline.com.

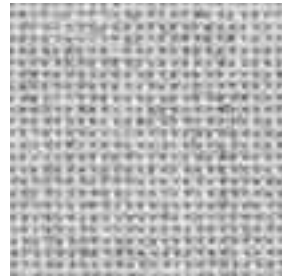
Please ask for details of other products from Wright Line. All products and company names are trademarks or registered trademarks of their respective holders. Every effort has been made to ensure that the information contained herein is correct. The company reserves the right to modify product specifications without prior notice and assumes no responsibility for any error which may appear in this publication.

©Wright Line LLC, 2005 05-29/G-1K/07-05 Printed in the USA.

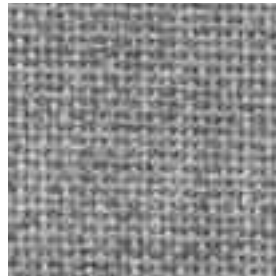
wright · line



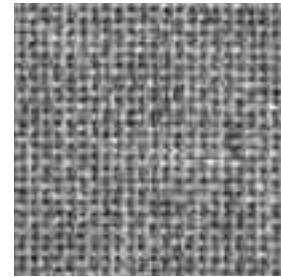
FR701® 2100 Series



2100-538 SILVER PAPIER



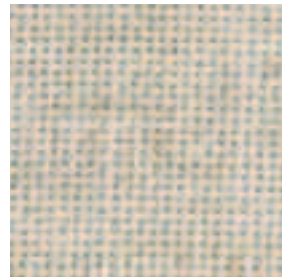
2100-539 BLUE PAPIER



2100-238 GREY MIX



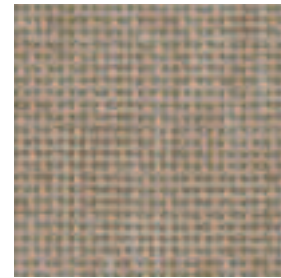
2100-298 MEDIUM GREY



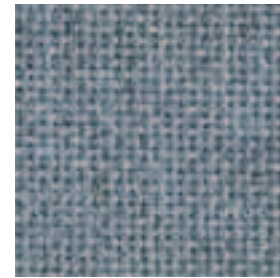
2100-380 QUARTZ



2100-749 DUNE



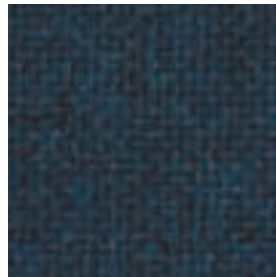
2100-758 DESERT SAND



2100-175 CRYSTAL BLUE



2100-150 WEDGEWOOD



2100-153 BALTIC



2100-404 APRICOT NEUTRAL



2100-401 BLUE NEUTRAL

Anchorage 2335 Series



2335-2026 QUARRY BLUE



2335-2045 COBALT



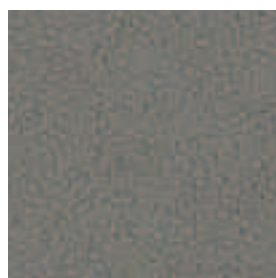
2335-2044 MULBERRY



2335-2047 EUCALYPTUS



2335-2085 THISTLE



2335-2049 GOOSE



2335-2130 VANILLA

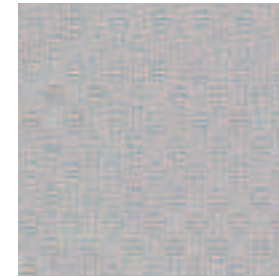


2335-2035 ANGORA

Streetwise 2721 Series



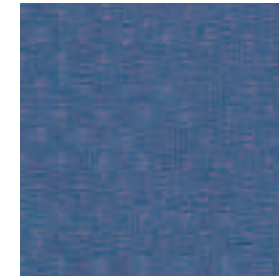
2721-1901 CROSSWALK



2721-1884 NEWS STAND

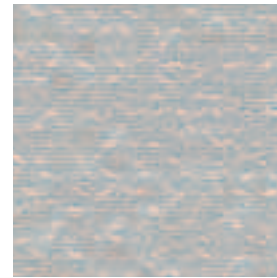


2721-1893 PIGEON

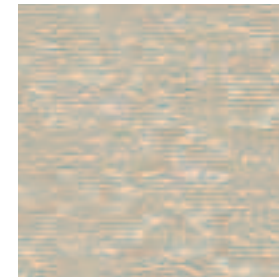


2721-1874 SCOOTER

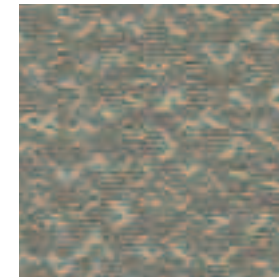
Mingle 2527 Series



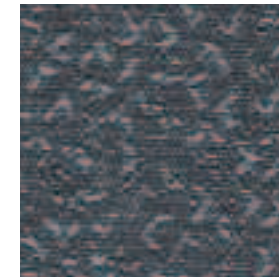
2527-070 WINTER



2527-090 BISQUIT



2527-020 KHAKI



2527-010 CARBON

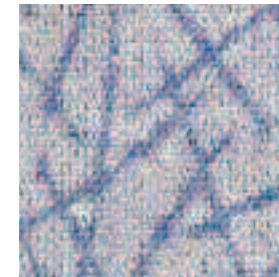
Network 4158 Series



4158-011 HICKORY



4158-020 FROST



4158-070 HARBOR



4158-031 PUTTY

Zirconia 3583 Series



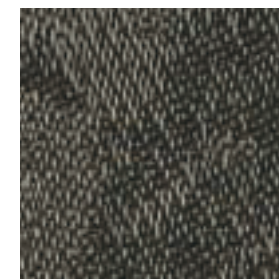
3583-011 OBSIDIAN



3583-021 OPAL



3583-070 TOURMALINE

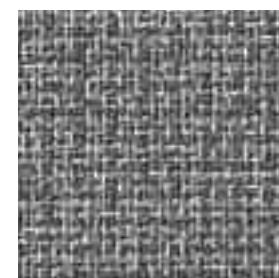


3583-041 SMOKY QUARTZ

Hopscotch 2823 Series



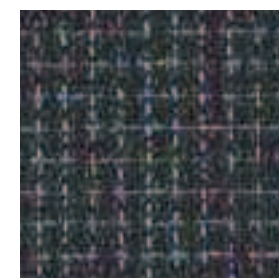
2823-025 PUTTY



2823-014 TIC TAC TOE



2823-017 MARBLES



2823-020 MIDNIGHT