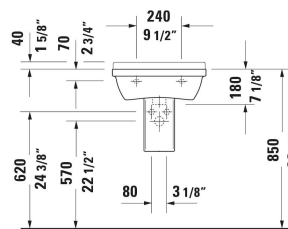
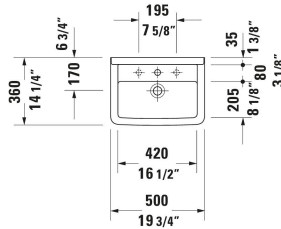


## Starck 3 Wall Mounted Sink # 0300500000 / 0300500030

| < 19 5/8 " > |



Wall Mounted Sink	Dimension	Weight	Order number
Rectangular, Includes faucet deck: Yes, Overflow: Yes, Underside glazed, Back side glazed: No, 19 5/8 ", cUPC listed: Yes			
<b>Colors</b>			
00 White			
<b>Variant</b>			
● White High Gloss, Number of basins: 1 Middle, Number of faucet holes: 1 Middle	19 5/8 "x7 1/8 "	31.085 lb	0300500000
●●● White High Gloss, Number of basins: 1 Middle, Number of faucet holes: 3 Left, Middle, Right, Soap dispenser position: Left	19 5/8 "x7 1/8 "	31.085 lb	0300500030
<b>Suitable products</b>			
Sink Shroud Installation Type: Sink mounted, 6 1/2 x 10 7/8 "	6 1/2 x 10 7/8 "		086517

All drawings contain the necessary measurements which are subject to standard tolerances. They are stated in inch & mm and are non-binding. Exact measurements, in particular for customized installation scenarios, can only be taken from the finished ceramic piece.