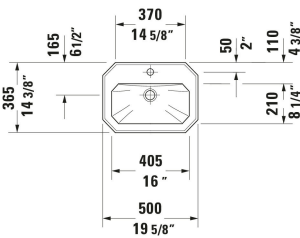
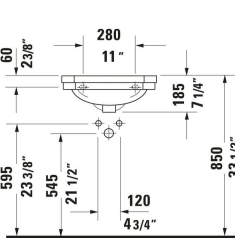


1930 Wall Mounted Sink # 0785500000

|< 19 5/8 " >|



Wall Mounted Sink	Dimension	Weight	Order number
Octagonal, Includes faucet deck: Yes, Overflow: Yes, Underside glazed, Back side glazed: No, 19 5/8 ", cUPC listed: Yes			
Colors			
00 White			
Variant			
● White High Gloss, Number of basins: 1 Middle, Number of faucet holes: 1 Middle	19 5/8 "x7 5/8 "	25.133 lb	0785500000

All drawings contain the necessary measurements which are subject to standard tolerances. They are stated in inch & mm and are non-binding. Exact measurements, in particular for customized installation scenarios, can only be taken from the finished ceramic piece.