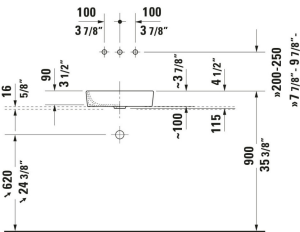
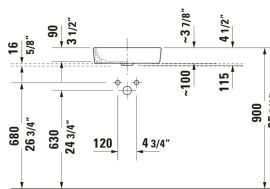
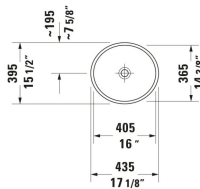


Starck 2 Vessel Sink # 2321440000

| < 17 1/8 " > |



Vessel Sink	Dimension	Weight	Order number
Round, Includes faucet deck: No, Overflow: No, Ground, 17 1/8", cUPC listed: Yes			
Colors			
00 White			
Variant			
☒ White High Gloss, Oval, Number of basins: 1 Middle, Back side glazed: No	17 1/8 "x4 1/2 "	16.976 lb	2321440000
Spare parts			
Sink Drain Sink, Material drain covers: Brass, Diameter: 2 7/8 " Ø 2 7/8 "		0.661 lb	005024
P-Trap Material: Brass, Outlet: horizontal, Suitable for Wall Mounted Sink	2 3/4 x 16 3/4 "	3.307 lb	005036
Suitable products			
Vanity Cabinet Number of drawers: 1, Includes vanity top: Yes, Faucet holes possible, Handle, Slow close, Lay-in compartment Optional, 31 1/2 x 21 5/8 "	31 1/2 x 21 5/8 "		DE4947
Vanity Cabinet Number of drawers: 1, Includes vanity top: Yes, Faucet holes possible, Handle, Slow close, Lay-in compartment Optional, 39 3/8 x 21 5/8 "	39 3/8 x 21 5/8 "		DE4948
Vanity Cabinet Number of drawers: 1, Includes vanity top: Yes, Faucet holes possible, Handle, Slow close, Lay-in compartment Optional, 47 1/4 x 21 5/8 "	47 1/4 x 21 5/8 "		DE4949
Vanity Cabinet Number of drawers: 1, Number of drawers: 1, Includes vanity top: Yes, Faucet holes possible, Handle, Siphon cut-out: Yes, Panel: Yes, Slow close, Lay-in compartment Optional, 31 1/2 x 21 5/8 "	31 1/2 x 21 5/8 "		DE4967

Starck 2 Vessel Sink # 2321440000

|< 17 1/8 " >|

Vanity Cabinet Number of drawers: 1, Number of drawers: 1, Includes vanity top: Yes, Faucet holes possible, Handle, Siphon cut-out: Yes, Panel: Yes, Slow close, Lay-in compartment Optional, 39 3/8 x 21 5/8 "	DE4968
Vanity Cabinet Number of drawers: 1, Number of drawers: 1, Includes vanity top: Yes, Faucet holes possible, Handle, Siphon cut-out: Yes, Panel: Yes, Slow close, Lay-in compartment Optional, 47 1/4 x 21 5/8 "	DE4969

All drawings contain the necessary measurements which are subject to standard tolerances. They are stated in inch & mm and are non-binding. Exact measurements, in particular for customized installation scenarios, can only be taken from the finished ceramic piece.